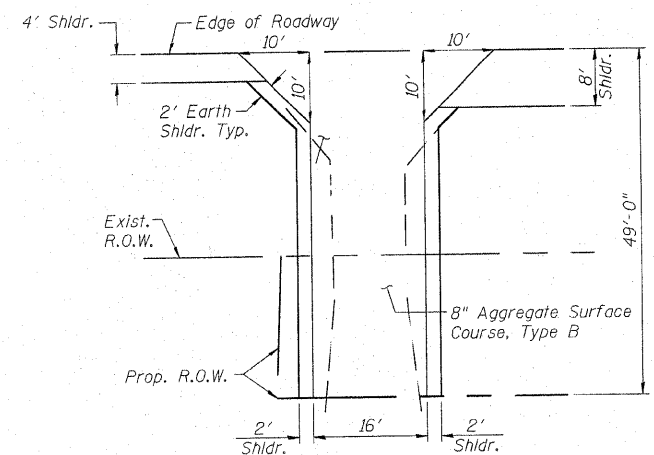
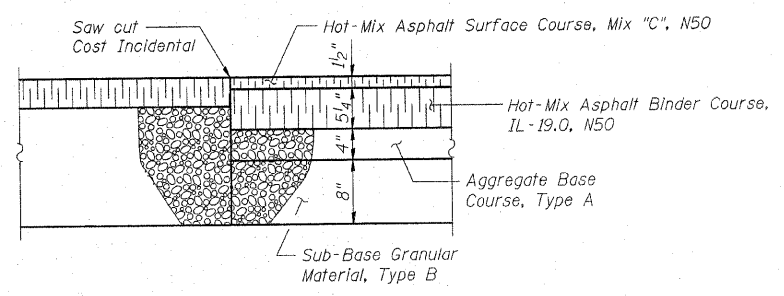


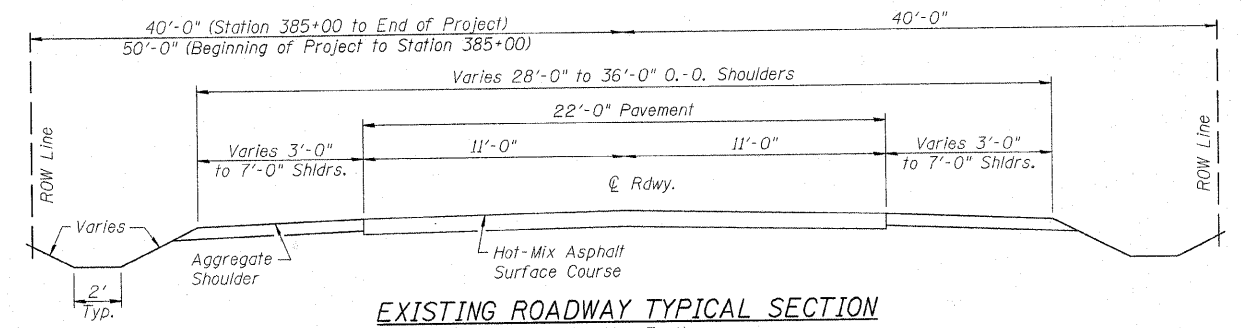
ROUTE	SECTION	COUNTY	SHEETS	SHEET
F.A.S. 60	07-00172-00-BR	STEPHENSON	31	4
FED. ROAD DIST. NO. 7	ILLINOIS	FED. AID PROJECT-	BRS-60(12)	



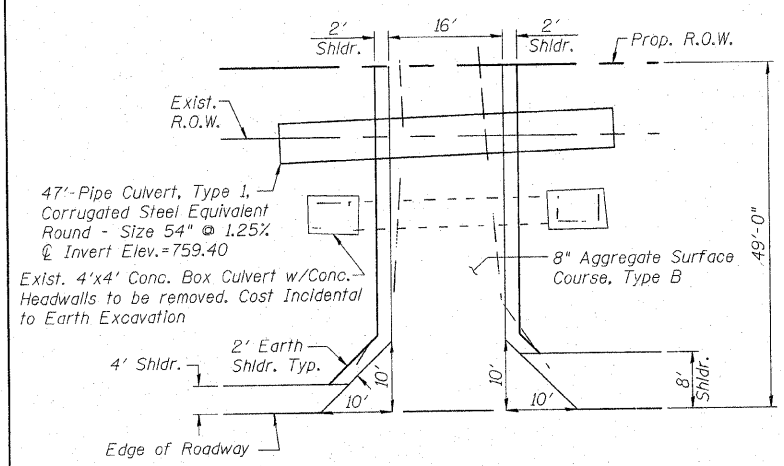
F.E.R. 380+36.5



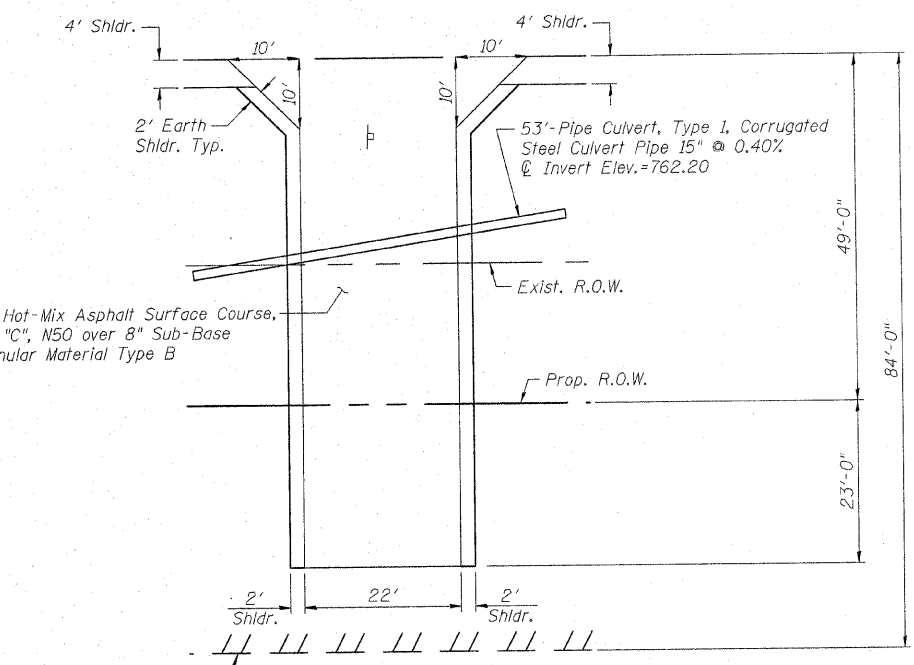
CORE JOINT DETAIL



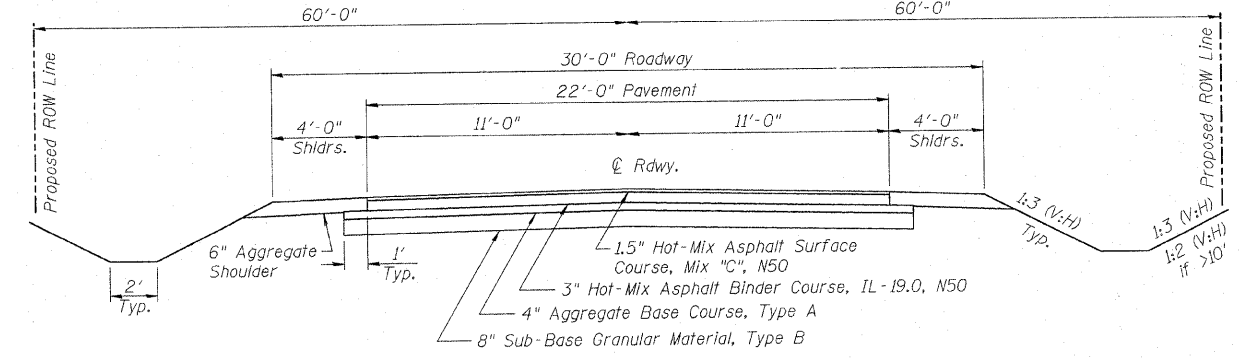
EXISTING ROADWAY TYPICAL SECTION (Looking East)



F.E.L. 380+98.5

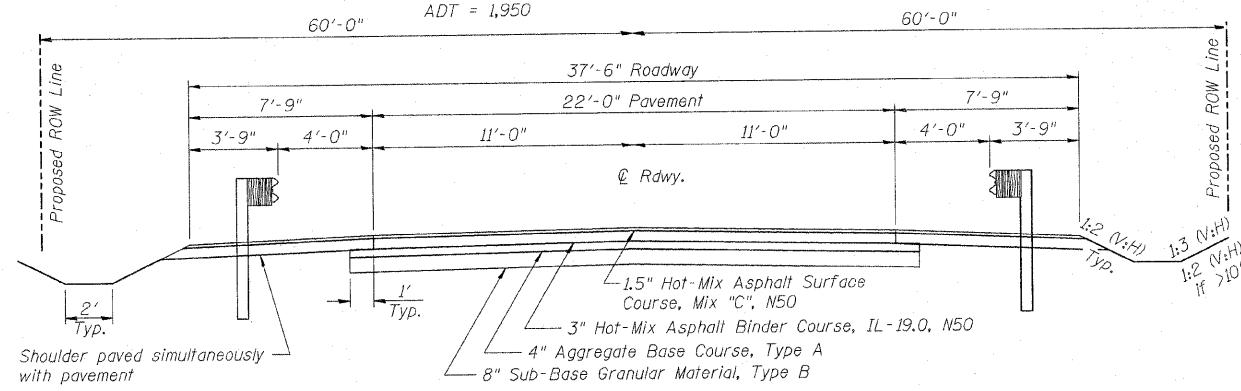


P.E.R. 388+05



PROPOSED ROADWAY TYPICAL SECTION (Looking East)

Rt. Sta. 379+50.00 - 380+22.50 & Rt. Sta. 386+87.50 - 390+00.00  
 Lt. Sta. 379+00.00 - 380+84.50 & Lt. Sta. 387+37.50 - 390+00.00  
 Highway Classification: Major Collector (Non-Urban)  
 Design Speed: 50 mph  
 ADT = 1,950



PROPOSED ROADWAY TYPICAL SECTION (Looking East)

Rt. Sta. 380+46.50 - 382+84.25 & Rt. Sta. 384+59.75 - 386+87.50  
 Lt. Sta. 381+08.50 - 382+84.25 & Lt. Sta. 384+59.75 - 387+37.50  
 Highway Classification: Major Collector (Non-Urban)  
 Design Speed: 50 mph  
 ADT = 1,950

**PAVEMENT STRUCTURAL DESIGN**  
**FAS 60 (CEDARVILLE ROAD)**

STRUCTURAL DESIGN TRAFFIC (S.D.T.) = YEAR 2018

CLASS III STREET  
 80,000\* TRUCK DESIGN

ER: (ASSUMED) 2 ksi  
 TF = 0.31  
 HMA MIX TEMP. 76° F  
 HMA E<sub>ac</sub> = 560 ksi  
 HMA DESIGN STRAIN 208 microstrain

USE

1.5" HOT-MIX ASPHALT SURFACE COURSE, MIX "C" N50  
 5.25" HOT-MIX ASPHALT BINDER COURSE, IL-19.0, N50  
 4" AGGREGATE BASE COURSE, TYPE A  
 8" SUB-BASE GRANULAR MATERIAL, TYPE B

P.V. 1665  
 S.U. 148  
 M.U. 37 } 1850 ADT

**PAVEMENT MIXTURE REQUIREMENTS**

MIXTURE USE:	SURFACE AND TOP SHOULDER	BINDER AND BOTTOM SHOULDER
PG:	PG 58-28	58-28
DESIGN AIR VOIDS	4.0 @ N50	4.0 @ N50
MIXTURE COMPOSITION (GRADATION MIXTURE)	IL 9.5 or 12.5	IL 19.0
FRICTION AGGREGATE	C	N/A
MIX UNIT WEIGHT	112 #/SQ. YD. / IN.	112 #/SQ. YD. / IN.

TYPICAL SECTIONS & ENTRANCE DETAILS  
 CEDARVILLE ROAD (FAS 60) OVER RICHLAND CREEK  
 STA. 383+72 (S.N. 089-3282)  
 SECTION 07-00172-00-BR  
 STEPHENSON COUNTY  
 WHA #1106007