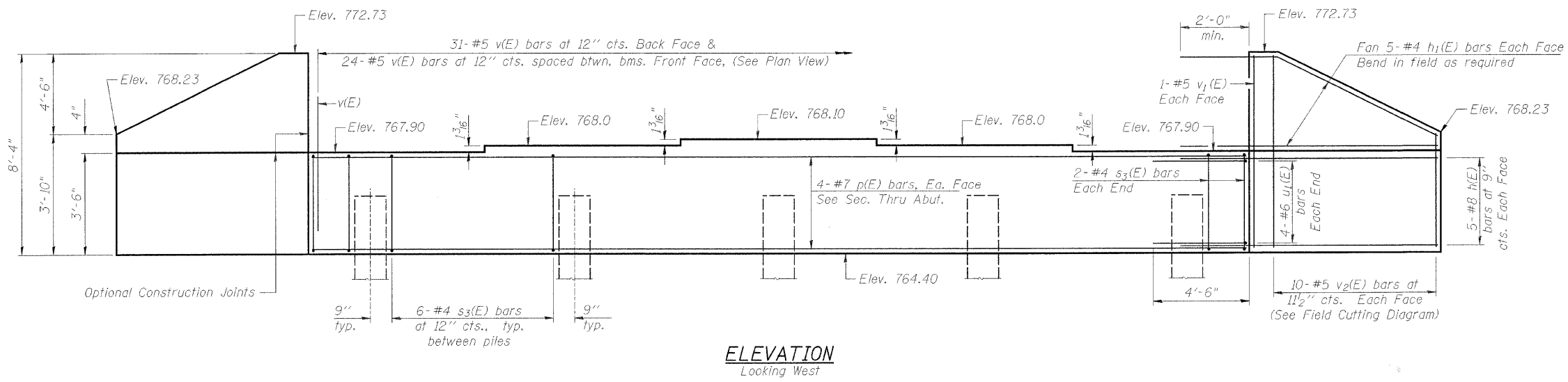
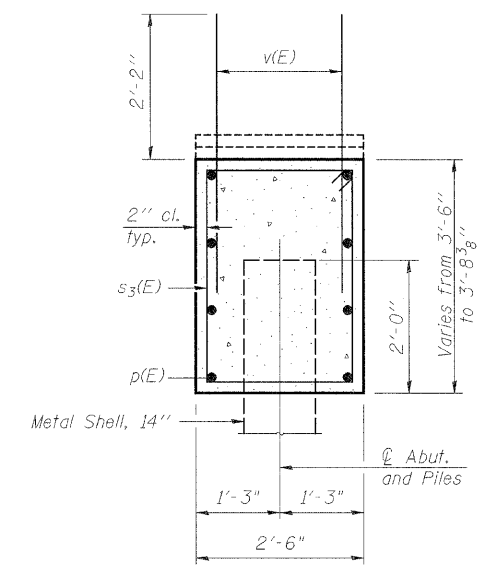


PROJECT NO.	SECTION	COUNTY	SHEET NO.	TOTAL SHEETS
60	07-00172-00-BR	STEPHENSON	31	16
FED. ROAD DIST. NO. 7	ILLINOIS	FED. AID PROJECT	BRS-60(12)	

Structural Sheet 7 of 14



ELEVATION
Looking West



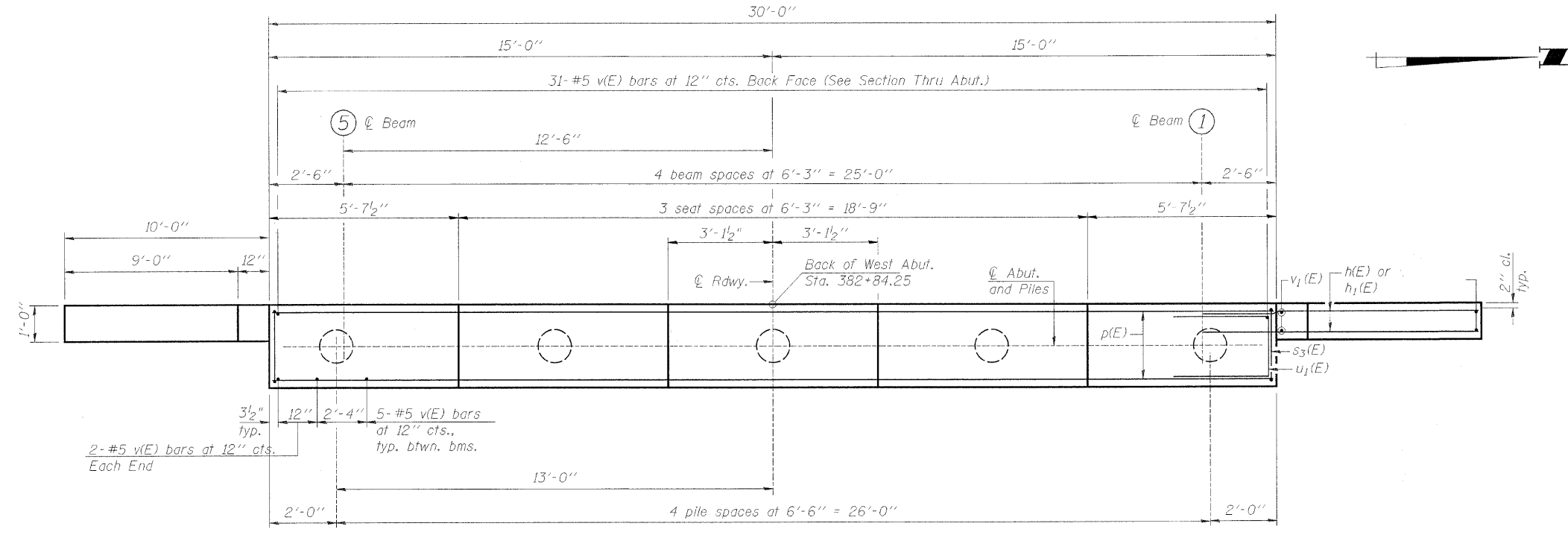
SEC. THRU ABUT.

BILL OF MATERIAL - WEST ABUT.

Bar	No.	Size	Length	Shape
h(E)	20	#8	14'-4"	—
h1(E)	20	#4	12'-0"	—
p(E)	8	#7	28'-8"	—
s3(E)	28	#4	11'-5"	□
u1(E)	8	#6	9'-1"	—
v(E)	55	#5	4'-11"	—
v1(E)	4	#5	8'-1"	—
v2(E)	20	#5	11'-8"	—
Porous Granular Embankment (Special)		Cu. Yd.	61	
Structure Excavation		Cu. Yd.	103	
Concrete Structures		Cu. Yd.	14.2	
Reinforcement Bars, Epoxy Coated		Pound	2,280	
Furnishing Metal Shell Piles 14" x 0.250"		Foot	120	
Driving Piles		Foot	120	
Test Pile Metal Shells		Each	1	
Geocomposite Wall Drain		Sq. Yd.	24	
Concrete Headwall for Pipe Drains		Each	2	
Pipe Underdrains for Structures 4"		Foot	67	

NOTES:
 Pour steps monolithically with cap.
 Reinforcement bars designated (E) shall be epoxy coated.
 Wing reinforcement shown is typical each wing.
 Unless otherwise noted.
 All exposed edges shall have standard 3/4" chamfers.
 Except as noted.

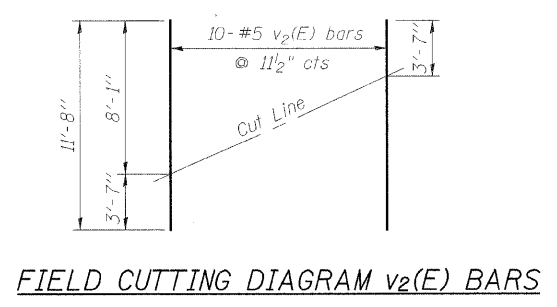
WEST ABUTMENT
CEDARVILLE ROAD (FAS 60) OVER RICHLAND CREEK
STA. 383+72 (S.N. 089-3282)
SECTION 07-00172-00-BR
STEPHENSON COUNTY
 WHA #1106D07



PLAN

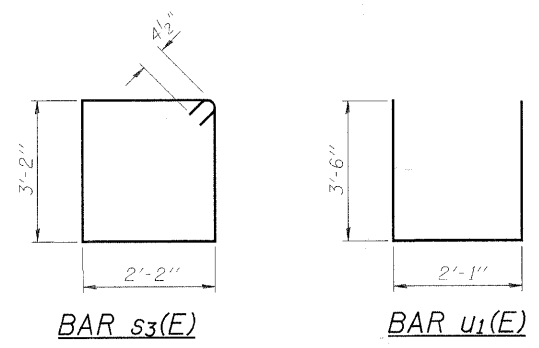
PILE DATA

Type: Metal Shell-14" x 0.250"
 Nominal Required Bearing: 416k
 Factored Resistance Available: 208k
 Est. Length: 30'
 No. Production Piles: 4
 No. Test Piles: 1



FIELD CUTTING DIAGRAM v2(E) BARS

Order v2(E) full length. Cut as shown and use remainder of bars in opposite face.



BAR s3(E)

BAR u1(E)