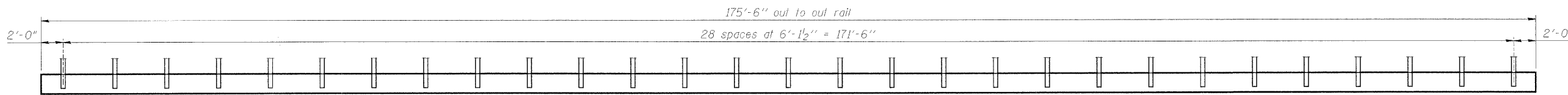
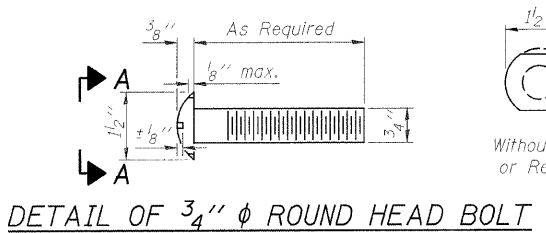


FIGURE	SECTION	COUNTY	SHEETS	SHEET
60	07-00172-00-BR	STEPHENSON	31	21
FED. ROAD DIST. NO. 7		ILLINOIS	FED. AID PROJECT - BRS-601(21)	
Structural Sheet 12 of 14				



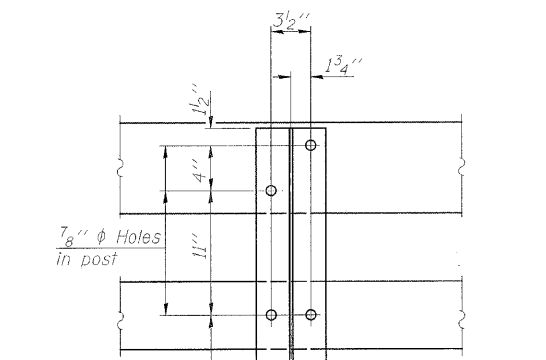
ELEVATION VIEW



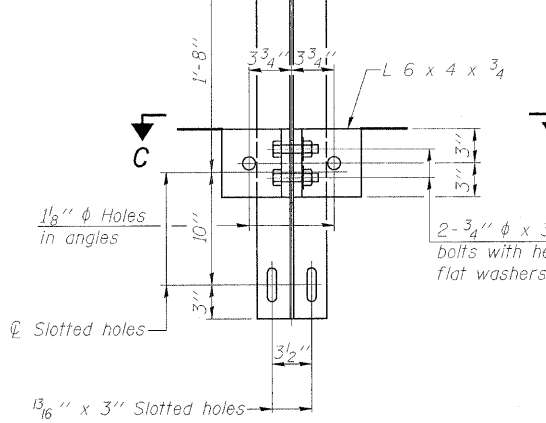
DETAIL OF 3/4" phi ROUND HEAD BOLT

VIEW A-A

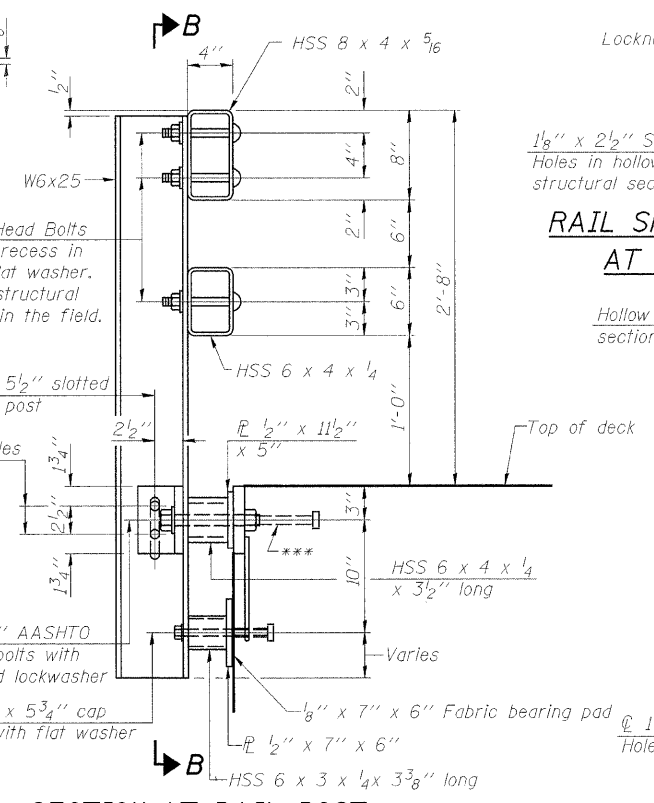
4-3/4" phi x 6" Round Head Bolts (With slot or approved recess in head) with locknut & flat washer. 7/8" phi holes in hollow structural section may be drilled in the field.



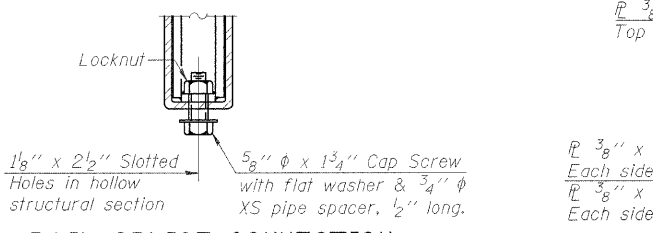
SECTION B-B



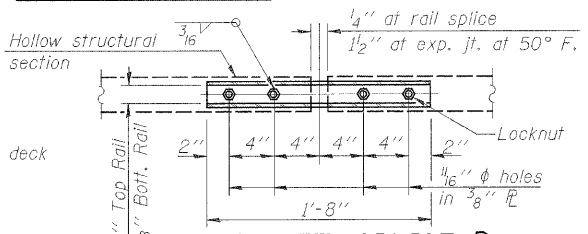
SECTION C-C



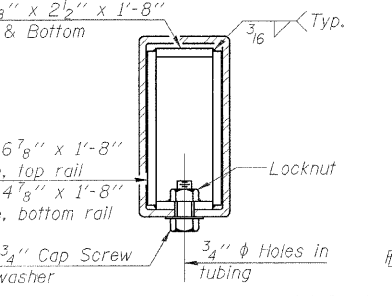
SECTION AT RAIL POST



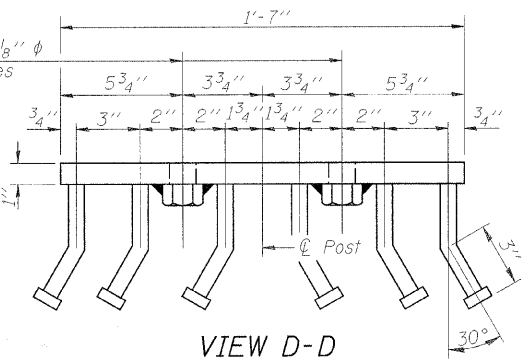
RAIL SPLICE CONNECTION AT EXPANSION JT.



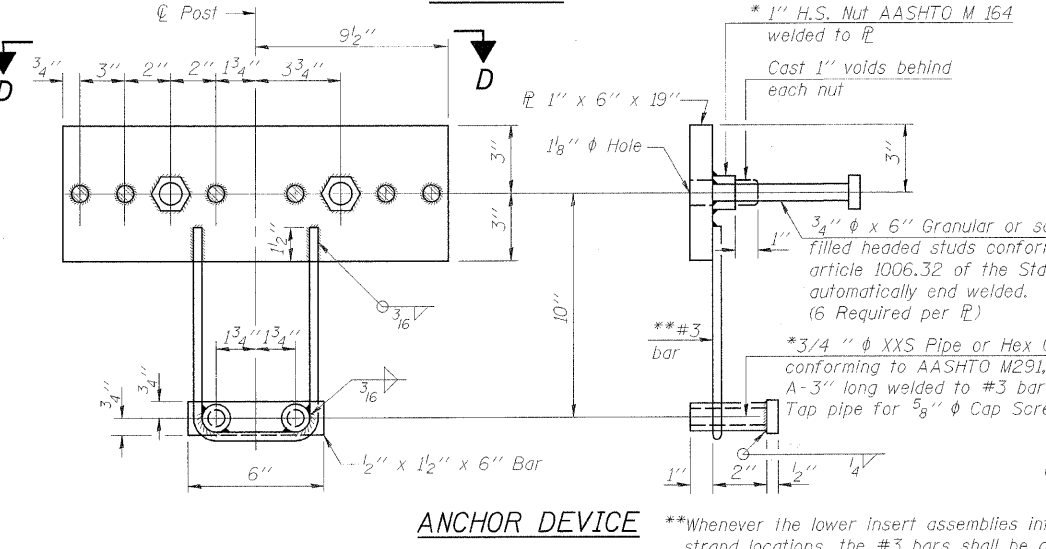
PLAN-BOTT. SPLICE AT TYPICAL



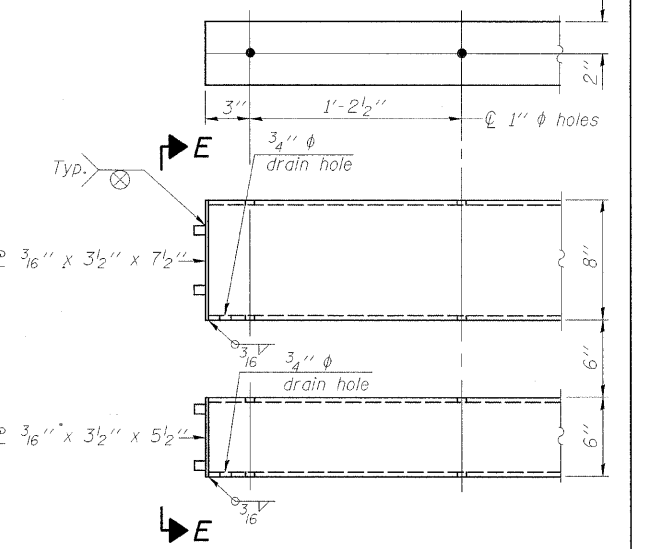
SECTION AT RAIL SPLICE



VIEW D-D



ANCHOR DEVICE



END OF RAIL DETAILS

NOTES:

- All field drilled holes shall be coated with an approved zinc rich paint before erection.
- For multi-span bridges, sufficient 1/4" x 6" x 1'-2" galvanized steel shims shall be provided to align rail between adjacent spans. Cost included with Steel Railing, Type SM.
- All steel rail members shall be galvanized according to Article 509.05 of the Standard Specifications.
- *** The studs of the anchor devices shall be placed below the top reinforcement bars and the outermost longitudinal reinforcement bar shall be placed directly above the studs of the rail post anchor device.

BILL OF MATERIAL

Item	Unit	Quantity
Steel Railing, Type SM	Foot	351

STEEL RAILING, TYPE SM
 CEDARVILLE ROAD (FAS 60) OVER RICHLAND CREEK
 STA. 383+72 (S.N. 089-3282)
 SECTION 07-00172-00-BR
 STEPHENSON COUNTY
 WHA #1106D07

*Threaded areas shall be plugged or blocked off during casting of beam. Galvanized after fabrication.

**Whenever the lower insert assemblies interfere with strand locations, the #3 bars shall be cut and adjusted in order to allow raising or lowering of the lower inserts. Maximum adjustment not to exceed 1/2".

(6'-3" Maximum Post Spacing)