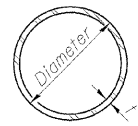


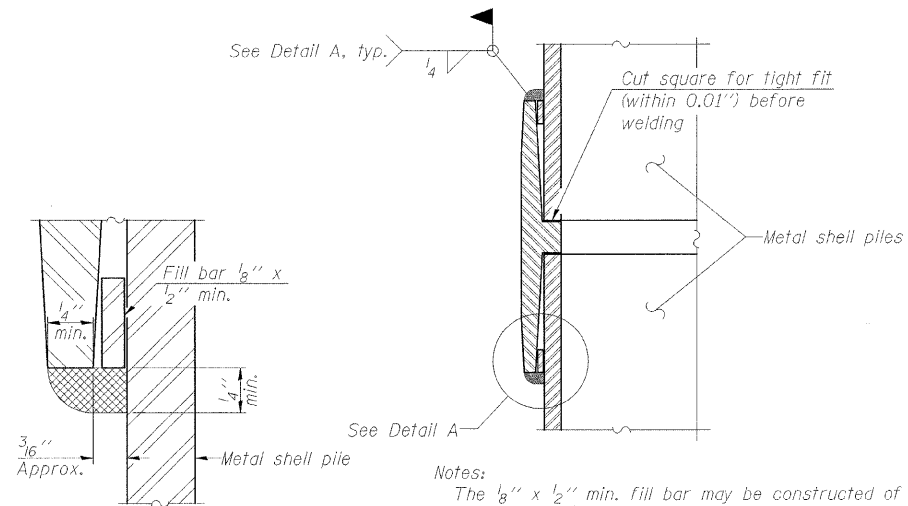
| | | | | |
|-----------------------|----------------|------------------|-------------|--------------|
| PROJECT | SECTION | COUNTY | SHEET NO. | TOTAL SHEETS |
| 60 | 07-00172-00-BR | STEPHENSON | 31 | 23 |
| FED. ROAD DIST. NO. 7 | ILLINOIS | FED. AID PROJECT | BRS-60(121) | |

Structural Sheet 14 of 14



METAL SHELL PILE TABLE

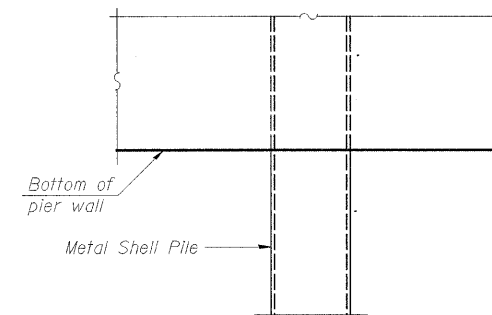
| Designation and outside diameter | Wall thickness t | Weight per foot (Lbs./ft.) | Inside volume (yd. ³ /ft.) |
|----------------------------------|------------------|----------------------------|---------------------------------------|
| PP12 | 0.179" | 22.60 | 0.0274 |
| PP12 | 0.250" | 31.37 | 0.0267 |
| PP14 | 0.250" | 36.71 | 0.0368 |
| PP14 | 0.312" | 45.61 | 0.0361 |



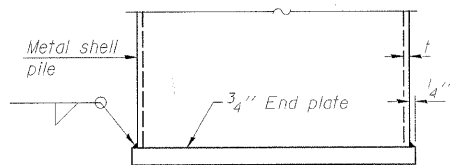
DETAIL A

Notes:
 The 1/8" x 1/2" min. fill bar may be constructed of 2 bars with a 1/8" max. gap between them.
 Pile segments shall be driven to solid contact with splicer before welding.

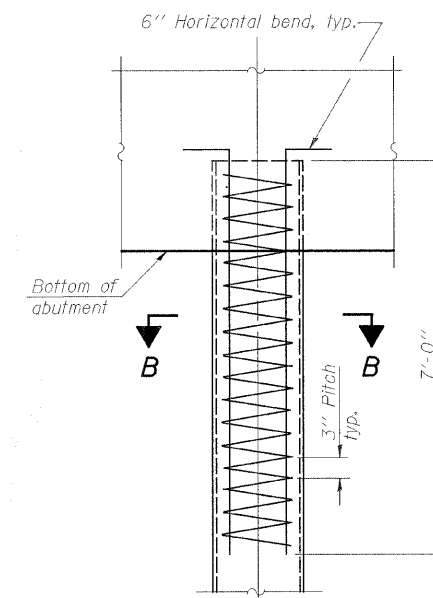
WELDED COMMERCIAL SPLICE



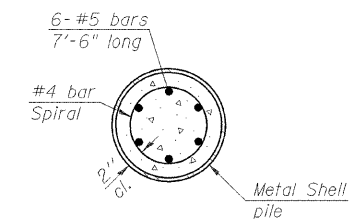
ELEVATION AT PIER



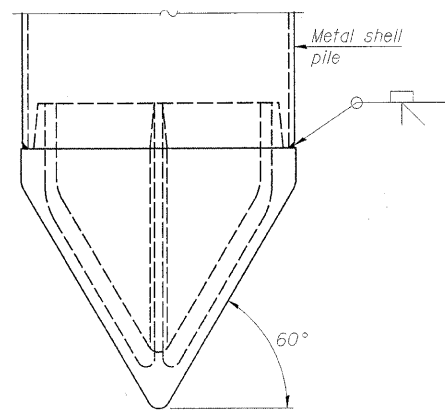
END PLATE ATTACHMENT



ELEVATION



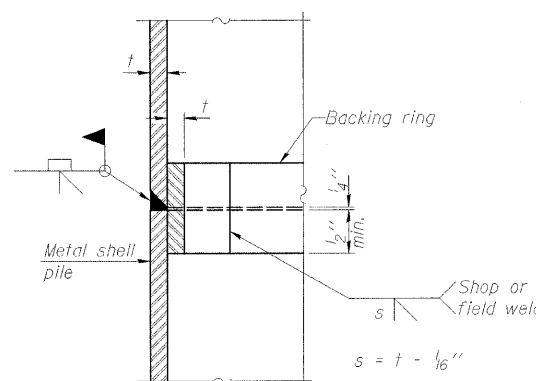
SECTION B-B



METAL SHELL PILE SHOE ATTACHMENT

(See Note A)

Note A:
 When called for on the plans, the Contractor shall furnish metal shell pile shoes consisting of a single piece conical pile point as shown. The pile shoes shall be cast in one piece steel according to either ASTM A 148 Grade 90-60 or AASHTO M 103 Grade 65-35 and shall provide full bearing over the full circumference of the metal shell pile. The pile shoe shall have tapered leads to assure proper alignment and fitting and shall be secured to the pile with a circumferential weld.



COMPLETE PENETRATION WELD SPLICE

Backing ring made from pile shell. Remove segment to allow reducing circumference and vertically rejoin with partial joint penetration weld.

NOTE:

The metal shell piles shall be according to ASTM A 252 Grade 3.

METAL SHELL PILE DETAILS
 CEDARVILLE ROAD (FAS 60) OVER RICHLAND CREEK
 STA. 383+72 (S.N. 089-3282)
 SECTION 07-00172-00-BR
 STEPHENSON COUNTY

WHA #1106D07