

GENERAL NOTES:

Reinforcement bars shall conform to the requirements of ASTM A 706 Gr 60. See Special Provisions.

Reinforcement bars designated (E) shall be epoxy coated.

Plan dimensions and details relative to existing plans are subject to nominal construction variations. The Contractor shall field verify existing dimensions and details affecting new construction and make necessary approved adjustments prior to construction or ordering of materials. Such variations shall not be cause for additional compensation for a change in scope of the work, however, the Contractor will be paid for the quantity actually furnished at the unit price bid for the work.

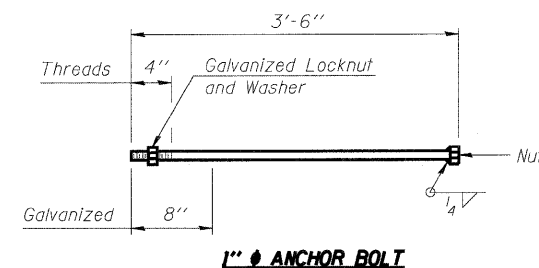
The Contractor shall make allowance for the deflection of forms, shrinkage and settlement of falsework, in addition to allowance for dead load deflection. Forms for deck slab shall be removed prior to placement of bridge approach pavement.

Excavation behind existing abutment walls shall be performed to balance front and back soil pressure before removing the existing superstructure.

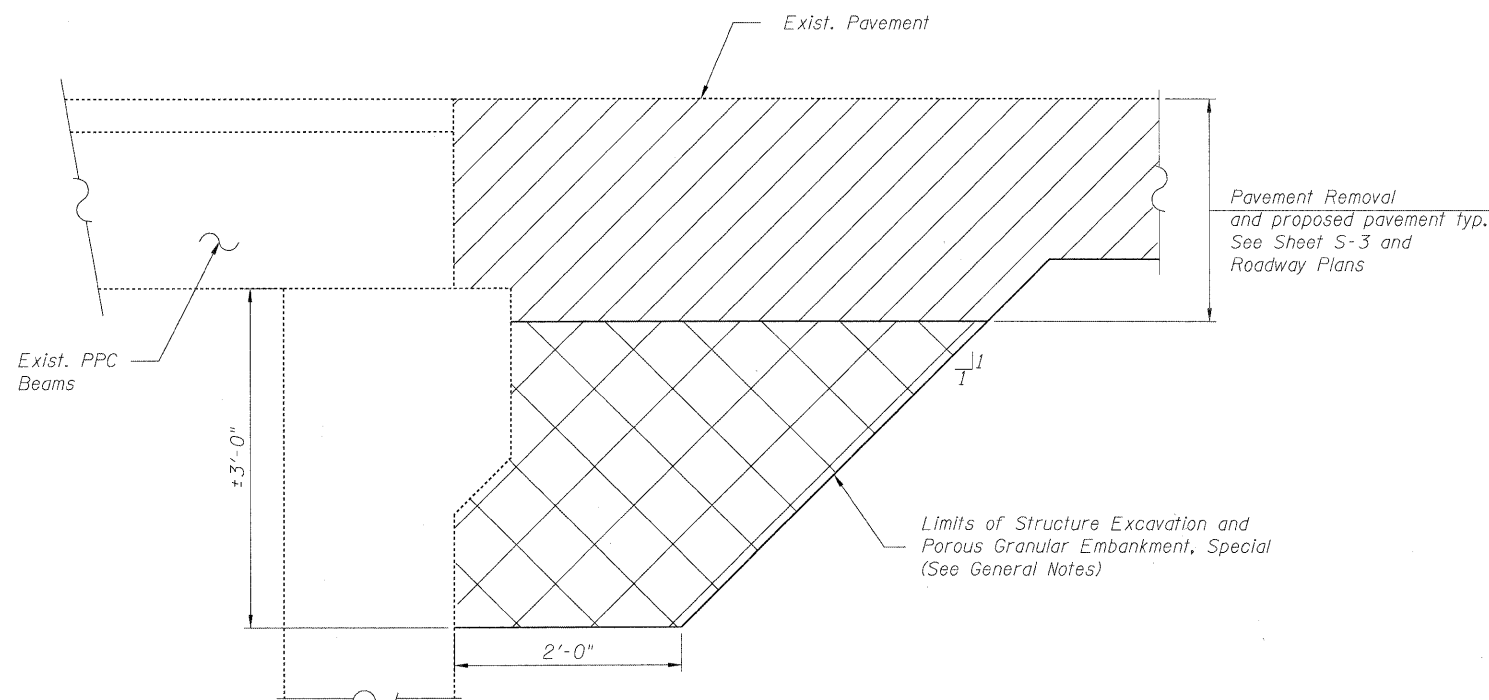
Backfill shall be placed behind the abutment after the superstructure has been poured and falsework removed. See Article 502.10 of the Standard Specifications.

TOTAL BILL OF MATERIAL

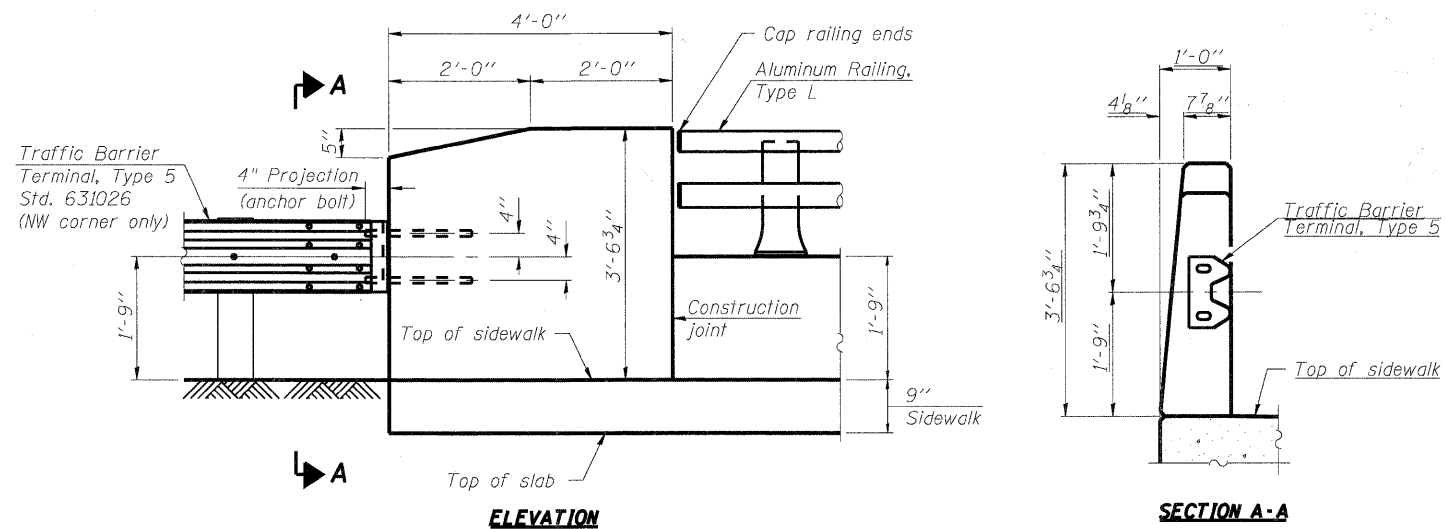
ITEM	UNIT	SUPER	SUB	TOTAL
Porous Granular Embankment, Special	Cu. Yd.	-	37	37
Structure Excavation	Cu. Yd.	-	37	37
Removal of Existing Superstructure	Each	1	-	1
Concrete Removal	Cu. Yd.	-	2.1	2.1
Concrete Superstructure	Cu. Yd.	75.1	-	75.1
Bridge Deck Grooving	Sq. Yd.	84	-	84
Protective Coat	Sq. Yd.	152	-	152
Reinforcement Bars, Epoxy Coated	Pound	13,170	-	13,170
Aluminum Railing, Type L	Foot	42	-	42
Name Plate	Each	1	-	1
Epoxy Crack Injection	Foot	-	27	27
Structural Repair of Concrete (Depth less than or equal to 5")	Sq. Ft.	-	25	25



Cost included in Concrete Superstructure



SECTION THRU ABUTMENT



END TREATMENT DETAIL

NOTES:

Work this sheet with sheet S-4.

GENERAL NOTES AND TOTAL BILL OF MATERIAL
SEARLES AVENUE (FAU ROUTE 5156)
OVER THE NORTHWEST DRAINAGEWAY
CITY OF ROCKFORD
WINNEBAGO COUNTY
S.N. 101-6004 **DATE: 2/6/09**

DESIGNED	KMA
CHECKED	RGD
DRAWN	WJH
CHECKED	RGD

SEC GROUP, INC.
 Illinois Professional Design Firm # 184-000108
 • Engineering • Surveying • Planning • Landscape Architecture
 4500 Prime Parkway, McHenry, IL 60050
 t. 815.385.1778 f. 815.385.1781
 www.secgroupinc.com
 • McHenry, IL • Yorkville, IL • New Lenox, IL • Chicago, IL

SHEET NO. S-2 S-6 SHEETS	F.A.U. RTE. 5156	SECTION 08-00550-00-BR	COUNTY Winnebago	TOTAL SHEETS 15	SHEET NO. 9
	CONTRACT NO. 85444			FED. ROAD DIST. NO. 2 ILLINOIS FED. AID PROJECT BHM 5099 (077)	