

F.A.U. RTE.	SECTION	COUNTY	TOTAL SHEETS	SHEET NO.
5156	08-00550-00-BR	Winnebago	15	1
FED. ROAD DIST. NO. 2	ILLINOIS	CONTRACT NO.	85444	

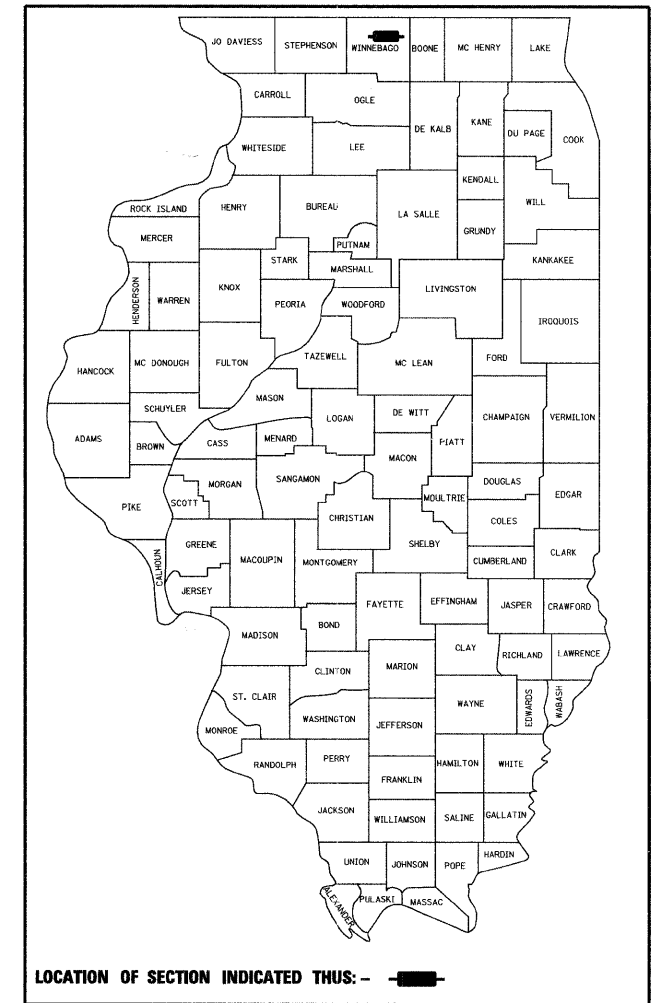
INDEX OF SHEETS	
SHEET NO.	DESCRIPTION
1	COVER SHEET
2	GENERAL NOTES & SPECIFICATIONS
3	SUMMARY OF QUANTITIES
4	TYPICAL SECTIONS
5	PLAN AND PROFILE
6	TEMPORARY DETOUR PLAN
7	EROSION CONTROL & RESTORATION PLAN
8-13	BRIDGE PLANS
14-15	CROSS SECTIONS

STATE STANDARDS	
000001-05	STANDARD SYMBOLS, ABBREVIATIONS AND PATTERNS
280001-04	TEMPORARY EROSION CONTROL SYSTEM
515001-03	NAME PLATE FOR BRIDGES
606001-04	CONCRETE CURB TYPE B AND COMBINATION CONCRETE CURB AND GUTTER
630001-08	STEEL PLATE BEAM GUARDRAIL
631011-05	TRAFFIC BARRIER TERMINAL, TYPE 2
631026-05	TRAFFIC BARRIER TERMINAL, TYPE 5
635006-03	REFLECTOR AND TERMINAL MARKER PLACEMENT
635011-02	REFLECTOR MARKER AND MOUNTING DETAILS
701006-03	OFF-RD OPERATIONS, 2L, 2W, 15' (4.5M) TO 24" (600mm) FROM PAVEMENT EDGE
701301-03	LANE CLOSURE, 2L, 2W, SHORT TIME OPERATIONS
701306-02	LANE CLOSURE, 2L, 2W, SLOW MOVING OPERATIONS DAY ONLY, FOR SPEEDS ≥ 45 MPH
701901-01	TRAFFIC CONTROL DEVICES
720001-01	SIGN PANEL MOUNTING DETAILS
720006-02	SIGN PANEL ERECTION DETAILS
720011-01	METAL POSTS FOR SIGNS, MARKERS AND DELINEATORS
728001-01	TELESCOPING STEEL SIGN SUPPORT
729001-01	APPLICATIONS OF TYPES A & B METAL POSTS (FOR SIGNS AND MARKERS)
780001-02	TYPICAL PAVEMENT MARKINGS
BLR 21-8	TYPICAL APPLICATION OF TRAFFIC CONTROL DEVICES FOR CONSTRUCTION ON RURAL LOCAL HIGHWAYS

CITY OF ROCKFORD

PLANS FOR PROPOSED FEDERAL AID HIGHWAY

FAU ROUTE 5156
SEARLES AVENUE
OVER THE NORTHWEST DRAINAGEWAY
SECTION 08-00550-00-BR
BRIDGE SUPERSTRUCTURE REPLACEMENT
PROJECT NO. BHM-5099 (077)
S.N. 101-6004
WINNEBAGO COUNTY
C-92-065-08

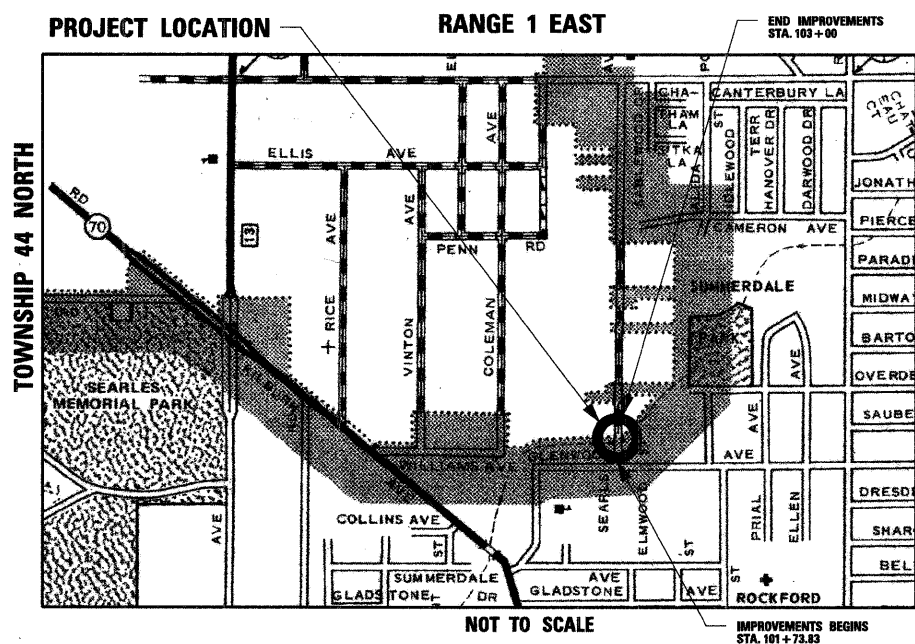


ENGINEER AND SURVEYOR:
 SEC GROUP INC.
 4500 PRIME PARKWAY
 MCHENRY, ILLINOIS 60050-2136
 (815) 385-1778
 CONTACT:
 BOB DAVIES, S.E., P.E. - STRUCTURAL ENGINEER
 KEVIN M. ARFT, P.E. - PROJECT ENGINEER

STRUCTURE INFORMATION:

EXISTING SN: 101-6004:
 EXISTING SINGLE SPAN STRUCTURE CONSISTS OF PPC DECK BEAMS WITH AN OUT-TO-OUT WIDTH OF 42'-0" AND A TOTAL LENGTH OF 29'-0" BK. TO BK. ABUTMENTS WITH A 17 DEGREE 22 MINUTE SKEW. THE SUBSTRUCTURE CONSIST OF CLOSED CONCRETE ABUTMENTS ON UNKNOWN FOUNDATIONS. SUPER STRUCTURE TO BE REMOVED AS SHOWN WITH NO SLAVAGE.

PROPOSED WORK INCLUDES PLACING A REINFORCED CONCRETE SLAB SUPERSTRUCTURE AS SHOWN.



FUNCTIONAL CLASSIFICATION
 COLLECTOR (URBAN)

DESIGN SPEED
 SEARLES AVE.: 35 MPH

SPEED LIMIT
 SEARLES AVE.: 30 MPH

2004 TRAFFIC DATA:
 SEARLES AVE: ADT=1,750

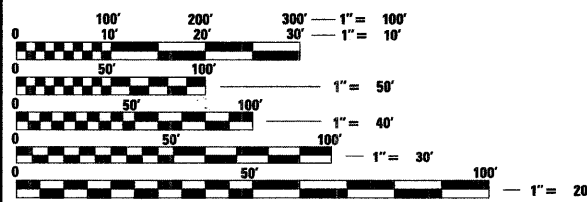
PRINTED BY THE AUTHORITY OF THE STATE OF ILLINOIS

CITY OF ROCKFORD

APPROVED 02-02-09 (DATE)
John J. Hamby, P.E.
 CITY OF ROCKFORD, CITY ENGINEER

PASSED FEBRUARY 19, 2009 (DATE)
James T. Nelson
 DISTRICT 2 ENGINEER OF LOCAL ROADS & STREETS

RELEASING FOR BID BASED ON LIMITED REVIEW FEBRUARY 19, 2009 (DATE)
Deanna F. Ryan
 DEPUTY DIRECTOR OF HIGHWAYS, REGION 2 ENGINEER



FULL SIZE PLANS HAVE BEEN PREPARED USING STANDARD ENGINEERING SCALES. REDUCED SIZED PLANS WILL NOT CONFORM TO STANDARD SCALES. IN MAKING MEASUREMENTS ON REDUCED PLANS, THE ABOVE SCALES MAY BE USED.

J.U.L.I.E.
 JOINT UTILITY LOCATION INFORMATION FOR EXCAVATION
 1-800-892-0123

CONTRACT NO. 85444

ROCKFORD TOWNSHIP

GROSS LENGTH OF IMPROVEMENT = 126 FT. = 0.02 MILES
 NET LENGTH OF IMPROVEMENT = 126 FT. = 0.02 MILES

STRUCTURAL ENGINEER'S SIGN & SEAL

Robert G. Davies
 ROBERT G. DAVIES, S.E., P.E.

DATE 2/6/2009

11/30/2010
 EXPIRES

PROFESSIONAL ENGINEER'S SIGN & SEAL

Kevin M. Arft
 KEVIN M. ARFT, P.E.

DATE 02-06-2009

11-30-2009
 EXPIRES

FEDERAL AID DESIGN ENGINEER: LAURA CONNOLLY (815) 284-2271

GENERAL NOTES

1. REMOVAL AND DISPOSAL OF UNSUITABLE MATERIAL, AND POROUS GRANULAR EMBANKMENT SUBGRADE HAS BEEN ADDED FOR USE IF UNSUITABLE MATERIAL IS ENCOUNTERED IN THE FIELD, AS DETERMINED BY THE ENGINEER. IF UNSUITABLE AND/OR UNSTABLE MATERIALS IS NOT ENCOUNTERED, THEN THE QUANTITY SHALL BE DEDUCTED AND NO COMPENSATION WILL BE DUE THE CONTRACTOR.

2. FORTY EIGHT HOURS BEFORE STARTING EXCAVATION THE CONTRACTOR WILL CALL J.U.L.I.E. (1-800-892-0123) TO HAVE THE LOCATION OF EXISTING UTILITIES STAKED.

3. THE CONTRACTOR SHALL CONTACT THE CITY OF ROCKFORD AT LEAST 72 HOURS IN ADVANCE OF BEGINNING ANY WORK ON SEARLES AVENUE.

4. THE CONTRACTOR WILL NOT BE ALLOWED TO SET UP A YARD OR FIELD OFFICE ON CITY PROPERTY WITHOUT WRITTEN PERMISSION FROM THE CITY OF ROCKFORD.

5. PRIOR TO COMMENCEMENT OF CONSTRUCTION, THE CONTRACTOR SHALL VERIFY ALL DIMENSIONS AND CONDITIONS AFFECTING THEIR WORK WITH THE ACTUAL CONDITIONS AT THE JOB SITE. IN ADDITION, THE CONTRACTOR MUST VERIFY THE ENGINEER'S LINE AND GRADE STAKES. IF THERE ARE ANY DISCREPANCIES FROM WHAT IS SHOWN ON THE CONSTRUCTION PLANS, HE MUST IMMEDIATELY REPORT SAME TO THE ENGINEER BEFORE DOING ANY WORK, OTHERWISE THE CONTRACTOR ASSUMES FULL RESPONSIBILITY. IN THE EVENT OF DISAGREEMENT BETWEEN THE CONSTRUCTION PLANS, STANDARD SPECIFICATIONS AND/OR SPECIAL DETAILS, THE CONTRACTOR SHALL SECURE WRITTEN INSTRUCTIONS FROM THE ENGINEER PRIOR TO PROCEEDING WITH ANY PART OF THE WORK AFFECTED BY OMISSIONS OR DISCREPANCIES. FAILING TO SECURE SUCH INSTRUCTIONS, THE CONTRACTOR WILL BE CONSIDERED TO HAVE PROCEEDED AT HIS OWN RISK AND EXPENSE. IN THE EVENT OF ANY DOUBT OR QUESTION ARISING WITH RESPECT TO THE TRUE MEANING OF THE CONSTRUCTION PLANS OR SPECIFICATIONS, THE DECISION OF THE ENGINEER SHALL BE FINAL AND CONCLUSIVE.

6. THE LENGTH OF "GUARDRAIL REMOVAL" INCLUDES THE LENGTH OF THE TRAFFIC BARRIER TERMINALS.

7. THE WORK UNDER THIS CONTRACT SHALL CONFORM TO ALL REGULATIONS GIVEN IN THE STATEWIDE PERMIT ISSUED FOR THE PROJECT.

8. REMOVAL AND RELOCATION OF EXISTING SIGNS AND EXISTING TRAFFIC CONTROL SIGNS WILL NOT BE PAID SEPARATELY BUT WILL BE INCLUDED IN THE UNIT COST OF THE PAY ITEMS PERSUANT TO ARTICLE 107 OF THE "STANDARD SPECIFICATIONS"

9. THE CONTRACTOR SHALL PROVIDE ACCESS TO ALL ABUTTING PROPERTY AT ALL TIMES DURING THE CONSTRUCTION OF THIS PROJECT, EXCEPT FOR PERIODS OF SHORT DURATION AS DETERMINED BY THE ENGINEER.

10. THE ENGINEER WILL BE THE SOLE JUDGE CONCERNING CURING TIME FOR THE VARIOUS HMA LIFTS.

11. EXCEPT AS NOTED ON THE PLANS, PAVEMENT GRADES SHOWN ARE AT THE TOP OF PAVEMENT SURFACES.

12. OFFSET LOCATIONS GIVEN IN THE PLANS FOR STRUCTURES, EDGE OF PAVEMENT, ETC. ARE FROM THE ROADWAY CENTERLINE UNLESS NOTED OTHERWISE.

13. ALL ELEVATIONS REFERRING TO U.S.G.S. MEAN SEA LEVEL DATUM.

14. THE LOCATION OF EXISTING DRAINAGE STRUCTURES, STORM SEWERS, WATER MAINS, SANITARY SEWERS, AND ANY OTHER PUBLIC OR PRIVATE UTILITIES AS SHOWN ON THE PLANS IS APPROXIMATE AND THEIR EXACT LOCATION IS TO BE DETERMINED IN THE FIELD BY THE CONTRACTOR. THIS WORK SHALL BE CONSIDERED AS INCLUDED IN THE UNIT BID PRICES OF THE CONTRACT, AND NO ADDITIONAL COMPENSATION WILL BE ALLOWED.

15. THE CONTRACTOR SHALL BE RESPONSIBLE FOR THE PROTECTION OF ALL UNDERGROUND AND SURFACE UTILITIES EVEN THOUGH THEY MIGHT NOT BE SHOWN ON THE PLANS. ANY UTILITY PROPERTY DAMAGED DURING CONSTRUCTION SHALL BE REPAIRED OR REPLACED TO THE SATISFACTION OF THE OWNER AT THE CONTRACTOR'S EXPENSE.

16. ANY LOOSE MATERIAL DEPOSITED IN THE FLOWLINES OF DRAINAGE STRUCTURES WHICH OBSTRUCT THE NATURAL FLOW OF WATER SHALL BE REMOVED AT THE CLOSE OF EACH WORKING DAY. PRIOR TO ACCEPTANCE OF THE IMPROVEMENT, ALL DRAINAGE STRUCTURES SHALL BE FREE OF DIRT AND DEBRIS. THIS WORK SHALL NOT BE PAID FOR SEPARATELY BUT SHALL BE CONSIDERED AS INCLUDED IN THE UNIT BID PRICES OF THE CONTRACT.

17. WHERE NEW WORK MEETS EXISTING FEATURES TO REMAIN, THE CONTRACTOR SHALL FIELD CHECK ALL DIMENSIONS AND ELEVATIONS PRIOR TO PROCEEDING WITH CONSTRUCTION AND NOTIFY THE ENGINEER IMMEDIATELY OF ANY DISCREPANCIES.

18. SEEDING WILL NOT BE PERMITTED AT ANY TIME WHEN THE GROUND IS FROZEN, WET, OR IN AN UNTILLABLE CONDITION. LOCATIONS TO BE SEEDED WILL BE DETERMINED BY THE ENGINEER.

19. SAW CUTTING WILL BE REQUIRED FOR ALL REMOVAL ITEMS LISTED IN SECTION 440 OF THE STANDARD SPECIFICATIONS, SHOWN IN THE PLANS, AND AS DIRECTED BY THE ENGINEER. THE COST OF SAW CUTTING WILL BE INCLUDED IN CONTRACT UNIT BID PRICES FOR THE ITEMS BEING REMOVED.

20. THE COST FOR FURNISHING AND INSTALLING REFLECTOR MARKERS IN ACCORDANCE WITH HIGHWAY STANDARDS 635006 AND 635011 IS INCLUDED IN THE COST OF TRAFFIC BARRIER TERMINALS, OF THE TYPE SPECIFIED.

SYMBOL LEGEND

	EXISTING	PROPOSED
SANITARY MANHOLE	⊙	⊙
STORM MANHOLE	⊙	⊙
STORM CATCH BASIN	○	●
INLET	□	■
FLARED END SECTION	▷	▷
VALVE VAULT	⊙	⊙
FIRE HYDRANT	▽	▽
LIGHT POLE	*	*
STREET SIGN	+	+
REGULATORY SIGN	+	+
UTILITY POLE	⊙	⊙
UTILITY BOX	⊙	⊙
MAILBOX	⊙	⊙
WELL	⊙	⊙
SANITARY SEWER	—	—
STORM SEWER	—	—
CULVERT	—	—
WATER MAIN	—	—
WATER MAIN ENCASEMENT	—	—
STORM UNDERDRAIN	—	—
ELECTRIC LINE	—	—
TELEPHONE LINE	—	—
GAS LINE	—	—
CABLE TV LINE	—	—
TREELINE	—	—
TREE	⊙	⊙
FENCE	—	—
EROSION CONTROL FENCE	—	—
DITCH CHECK	—	—
DRAINAGE ARROW	—	—
100 YEAR OVERFLOW	—	—

STANDARD ABBREVIATIONS

- B-B - BACK TO BACK OF CURB
- B.C. - BACK OF CURB
- B.O.C. - BACK OF CURB
- B.S.L. - BUILDING SETBACK LINE
- C.B. - STORM CATCH BASIN
- C.E. - COMMONWEALTH EDISON CO.
- D.E. - DRAINAGE EASEMENT
- E-E - EDGE TO EDGE OF PAVEMENT
- E.O.P. - EDGE OF PAVEMENT
- E.O.S. - EDGE OF SHOULDER
- E.P. - EDGE OF PAVEMENT
- E.S. - EDGE OF SHOULDER
- F.E.S. - FLARED END SECTION
- I.B.T. - ILLINOIS BELL TELEPHONE CO.
- L.E. - LANDSCAPE EASEMENT
- M.H. - MANHOLE (TYPE SPECIFIED ON PLANS)
- R.O.W. - RIGHT OF WAY
- T.B.F. - TRENCH BACKFILL
- T.C. - TOP OF CURB
- T.C.E. - TEMPORARY CONSTRUCTION EASEMENT
- T.O.B. - TOP OF BERM
- T.O.C. - TOP OF CURB
- U.E. - UTILITY EASEMENT

UTILITY CONTACTS

COMCAST	MICHAEL OWENS	(815) 509-7876
COMED	MIKE LENOX	(815) 490-2869
AT&T	STEVEN JONES	(815) 394-7270
NICOR	CHRIS WINTERS	(815) 455-0271

COMPANY NAME: SEC GROUP, INC.
 PROJECT CONTACT: Kevin Arft
 CLIENT: City of Rockford
 DATE PLOTTED: 08/01/09 10:48 AM
 PLOT NAME: 080217-01-Gen.dgn
 PLOT DRIVER: pefgh
 PEN TABLE: standard-frans.tbl

SEC Group, Inc.
 Engineering
 Surveying
 Planning
 Landscape Architecture
 McHenry • Yorkville • New Lenox • Chicago
 www.secgroupinc.com

USER NAME = whood	DESIGNED - K. ARFT	REVISED -
FILE NAME = 080217-01-Gen.dgn	DRAWN - WJH	REVISED -
PLOT SCALE = N.T.S.	CHECKED - RGD	REVISED -
PLOT DATE = 2/4/2009	DATE - 2/6/09	REVISED -

CITY OF ROCKFORD

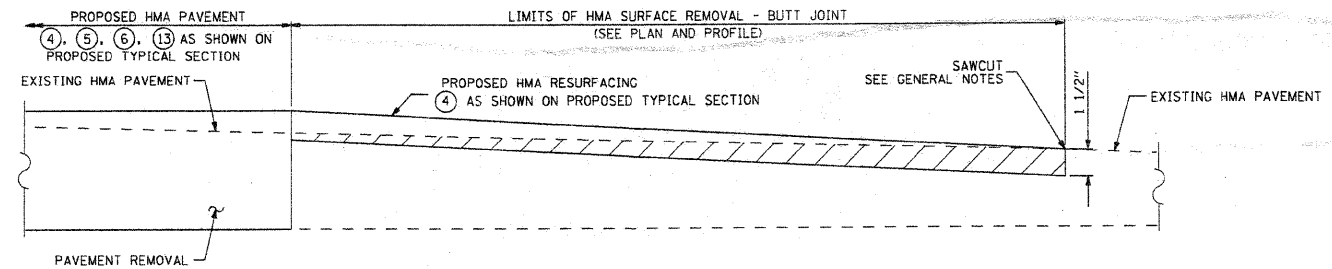
**SEARLES AVENUE BRIDGE REHABILITATION
GENERAL NOTES AND SPECIFICATIONS**

SCALE: N.T.S. SHEET NO. 1 OF SHEETS STA. TO STA.

F.A.U. RTE.	SECTION	COUNTY	TOTAL SHEETS	SHEET NO.
5156	08-00550-00-BR	Winnebago	15	2
CONTRACT NO. 85444			FED. ROAD DIST. NO. 2 ILLINOIS FED. AID PROJECT	

SUMMARY OF QUANTITIES			URBAN	CONSTRUCTION TYPE CODE	
CODE NUMBER	PAY ITEMS	UNIT	TOTAL QUANTITY	ROADWAY	BRIDGE
				I000-2A	X071-2A
20201200	REMOVAL AND DISPOSAL OF UNSUITABLE MATERIAL	CU. YD.	37	37	---
20700400	POROUS GRANULAR EMBANKMENT, SPECIAL	CU. YD.	37	37	---
20700420	POROUS GRANULAR EMBANKMENT, SUBGRADE	CU. YD.	37	---	37
21101615	TOPSOIL FURNISH AND PLACE, 4"	SQ. YD.	336	336	---
25000210	SEEDING CLASS 2A	ACRE	0.10	0.10	---
25000400	NITROGEN FERTILIZER NUTRIENT	POUND	9	9	---
25000500	PHOSPHOROUS FERTILIZER NUTRIENT	POUND	9	9	---
25000600	POTASSIUM FERTILIZER NUTRIENT	POUND	9	9	---
25100630	EROSION CONTROL BLANKET	SQ. YD.	336	336	---
28000300	TEMPORARY DITCH CHECKS	EACH	1	1	---
28000400	PERIMETER EROSION BARRIER	FOOT	314	314	---
31101200	SUB-BASE GRANULAR MATERIAL, TYPE B, 4"	SQ. YD.	133	133	---
40600100	BITUMINOUS MATERIALS (PRIME COAT)	GAL.	18	18	---
40600982	HOT-MIX ASPHALT SURFACE REMOVAL - BUTT JOINT	SQ. YD.	141	141	---
40603080	HOT-MIX ASPHALT BINDER COURSE, IL-19.0, N50	TON	65	65	---
40603310	HOT-MIX ASPHALT SURFACE COURSE, MIX "C", N50	TON	21	21	---
42400200	PORTLAND CEMENT CONCRETE SIDEWALK, 5"	SQ. FT.	341	341	---
44000100	PAVEMENT REMOVAL	SQ. YD.	104	104	---
48101500	AGGREGATE SHOULDERS, TYPE B, 6"	SQ. YD.	92	92	---
50101500	REMOVAL OF EXISTING SUPERSTRUCTURES	EACH	1	---	1
50102400	CONCRETE REMOVAL	CU. YD.	2.1	---	2.1
50200100	STRUCTURE EXCAVATION	CU. YD.	37	---	37
50300255	CONCRETE SUPERSTRUCTURE	CU. YD.	75.1	---	75.1
50300260	BRIDGE DECK GROOVING	SQ. YD.	84	---	84
50300300	PROTECTIVE COAT	SQ. YD.	152	---	152
50800205	REINFORCEMENT BARS, EPOXY COATED	POUND	13,170	---	13,170
* 50900105	ALUMINUM RAILING, TYPE L	FOOT	42	---	42
51500100	NAME PLATES	EACH	1	---	1
59000200	EPOXY CRACK INJECTION	FOOT	27	---	27
60605000	COMBINATION CONCRETE CURB AND GUTTER, TYPE B-6.24	FOOT	37	37	---
Δ 60608525	COMBINATION CONCRETE CURB AND GUTTER, TYPE M-2.24 (SPECIAL)	FOOT	30	30	---
* 63100045	TRAFFIC BARRIER TERMINAL, TYPE 2	EACH	1	1	---
* 63100070	TRAFFIC BARRIER TERMINAL, TYPE 5	EACH	1	1	---
63200310	GUARDRAIL REMOVAL	FOOT	95	95	---
67000400	ENGINEER'S FIELD OFFICE, TYPE A	CAL. MO	4	4	---
67100100	MOBILIZATION	L. SUM	1	0.5	0.5
Δ 70101830	TRAFFIC CONTROL & PROTECTION STANDARD BLR 21	L. SUM	1	1	---
* Δ 78201000	TERMINAL MARKER - DIRECT APPLY	EACH	1	1	---
Δ X0325305	STRUCTURAL REPAIR OF CONCRETE (DEPTH LESS THAN OR EQUAL TO 5")	SQ. FT.	25	---	25
Δ Z0013798	CONSTRUCTION LAYOUT	L. SUM	1	1	---

* DENOTES SPECIALTY ITEM
Δ DENOTES SPECIAL PROVISION



HMA SURFACE REMOVAL - BUTT JOINT DETAIL

COMPANY NAME: SEC GROUP, INC.
PROJECT CONTACT: Keith Arft
CLIENT: City of Rockford
DATE PLOTTED: 2/11/2009 4:38:01 PM
PLOT NAME: 08217-01-Sum.dgn
PLOT DATE: 2/11/2009
PLOT TIME: 4:38:01 PM
PLOT USER: k-arft
PLOT TABLE:



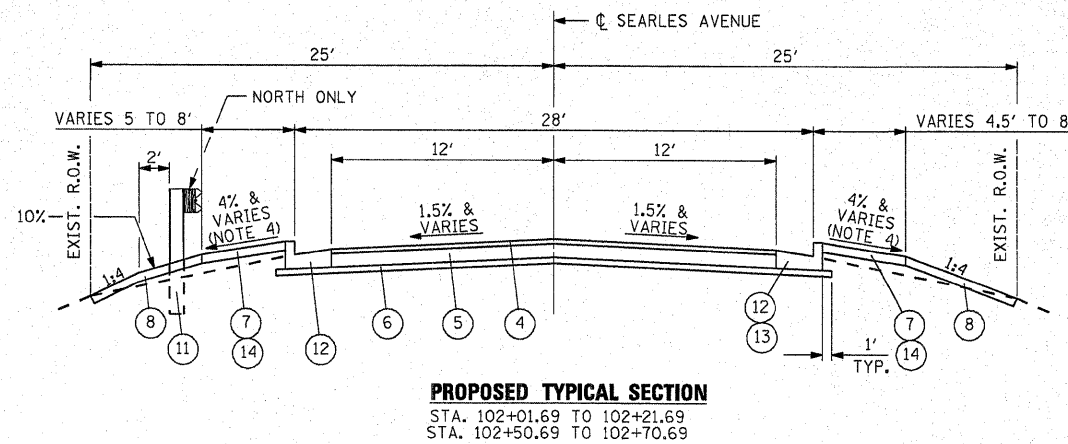
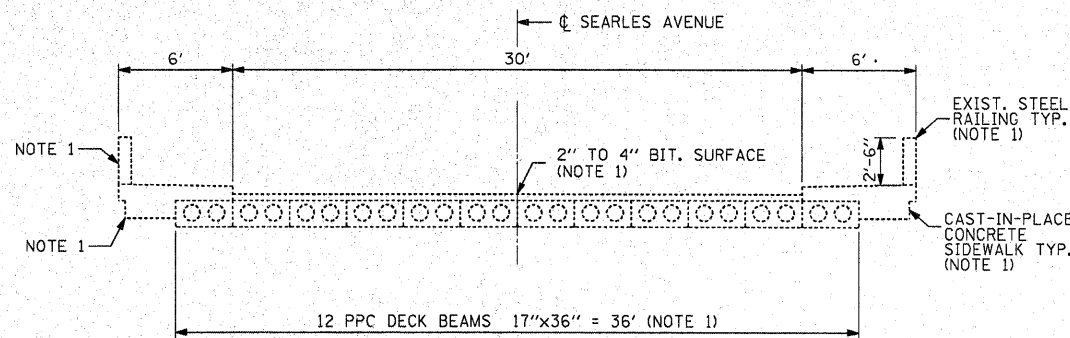
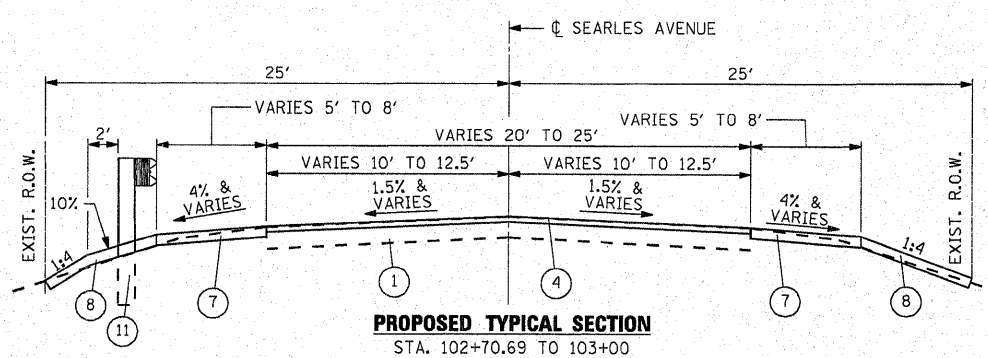
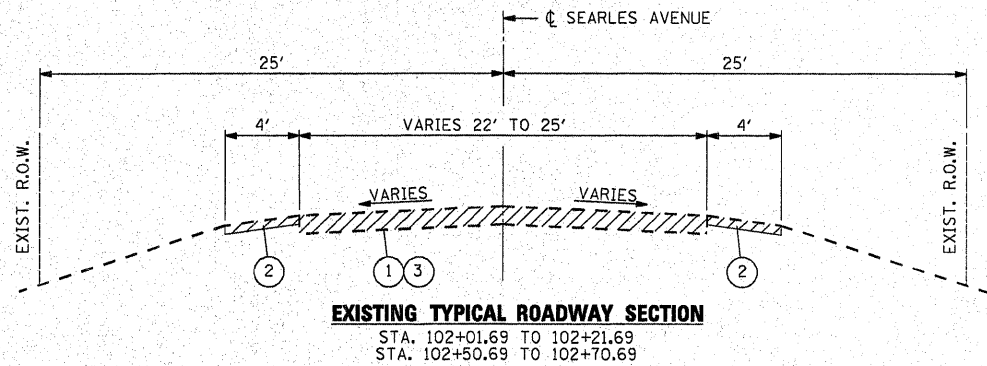
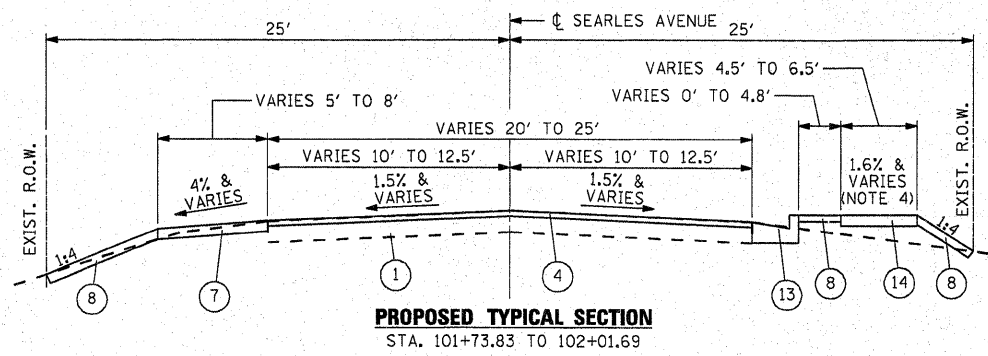
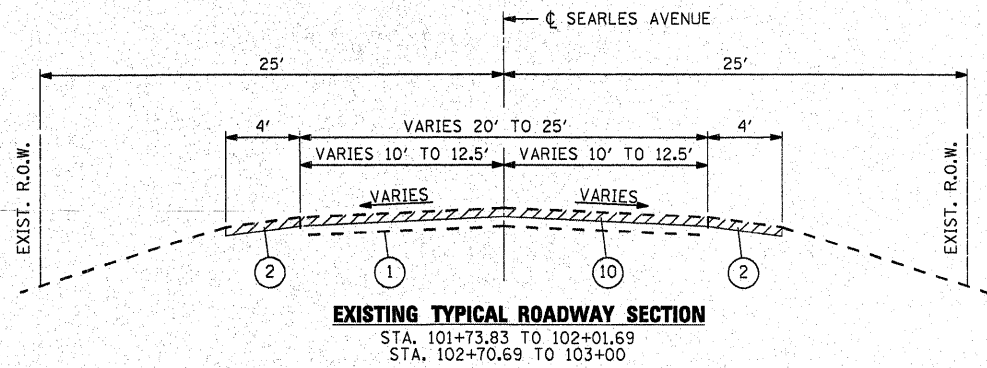
USER NAME = whood	DESIGNED - K. ARFT	REVISED -
FILE NAME = 08217-01-Sum.dgn	DRAWN - WJH	REVISED -
PLOT SCALE = N.T.S.	CHECKED - RGD	REVISED -
PLOT DATE = 2/11/2009	DATE = 2/6/09	REVISED -

CITY OF ROCKFORD

**SEARLES AVENUE BRIDGE REHABILITATION
SUMMARY OF QUANTITIES**

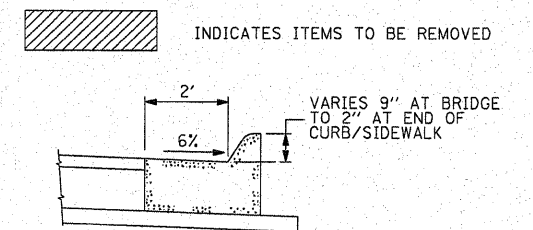
SCALE: N.T.S. SHEET NO. 1 OF SHEETS STA. TO STA.

F.A.U. RTE.	SECTION	COUNTY	TOTAL SHEETS	SHEET NO.
5156	08-00550-00-BR	Winnebago	15	3
FED. ROAD DIST. NO. 2 (ILLINOIS) FED. AID PROJECT			CONTRACT NO. 85444	



- NOTES**
- COST FOR REMOVAL INCLUDED IN THE ITEM REMOVAL OF EXISTING SUPERSTRUCTURE
 - STA. 102+05.76 TO STA. 102+17.15 LT (SW)
STA. 102+46.14 TO STA. 102+56.14 LT (NW)
STA. 102+55.22 TO STA. 102+66.60 RT (NE)
 - STA. 101+88.45 TO STA. 102+26.22 RT
 - STA. 101+88.45 TO STA. 102+26.22 RT (SE)
CROSS SLOPE VARIES FROM 1.6% TOWARD ROADWAY AT THE BRIDGE TO MATCH THE EXISTING SIDEWALK.
STA. 102+05.77 TO STA. 102+17.31 RT (SW)
STA. 102+46.30 TO STA. 102+56.15 LT (NW)
STA. 102+55.06 TO STA. 102+66.60 LT (NE)
CROSS SLOPE 1.6% TOWARD ROADWAY
 - STA. 102+44.73 TO STA. 102+74.74 LT

- TYPICAL SECTION LEGEND**
- EXISTING PAVEMENT
 - EXIST. SHOULDER (REMOVAL COST INCLUDED IN PAVEMENT REMOVAL)
 - PAVEMENT REMOVAL
 - PROP. HOT-MIX ASPHALT SURFACE COURSE MIX "C" N50 1 1/2"
 - PROP. HOT-MIX ASPHALT BINDER COURSE IL - 19.0, N50 10 1/2"
 - PROP. SUBBASE GRANULAR MATERIAL, TYPE B 4"
 - PROP. AGGREGATE SHOULDER, TYPE B 6"
 - PROP. TOPSOIL FURNISH & PLACE 4" WITH SEEDING CLASS 2A
 - PROP. POROUS GRANULAR EMBANKMENT, SUBGRADE
 - HOT-MIX ASPHALT SURFACE REMOVAL - BUTT JOINT
 - PROP. TRAFFIC BARRIER TERMINAL, TYPE 5, AND TRAFFIC BARRIER TERMINAL, TYPE 2 (NOTE 5)
 - PROP. COMBINATION CONCRETE CURB AND GUTTER, TYPE M-2.24 (SPECIAL) SEE DETAIL (NOTE 2)
 - COMBINATION CONCRETE CURB AND GUTTER, TYPE B-6.24 (NOTE 3)
 - PORTLAND CEMENT CONCRETE SIDEWALK 5" (NOTE 4)



COMBINATION CONCRETE CURB AND GUTTER, TYPE M-2.24 (SPECIAL) DETAIL
SEE STD 606001 FOR ADDITIONAL INFORMATION

HOT-MIX ASPHALT MIXTURE REQUIREMENTS		
MIXTURE USE	SURFACE	BINDER
PG:	PG 64-22	PG 58-22
DESIGN AIR VOIDS	4.0 @ N50	3.0 @ N50
MIXTURE COMPOSITION (GRADIATION MIXTURE)	IL 9.5 OR 12.5	IL 19.0
FRICITION AGGREGATE	C	N/A
20 YEAR ESAL	0.0	0.0
MIX UNIT WEIGHT	112 LBS/SY/IN	

COMPANY NAME: SEC GROUP, INC.
PROJECT CONTACT: Kevin Arft
CLIENT: City of Rockford
FILE NAME: 080217-01-Typ.dgn
PLOT DRIVER: pdtPlot
PEN TABLE: standard-trans.tbl



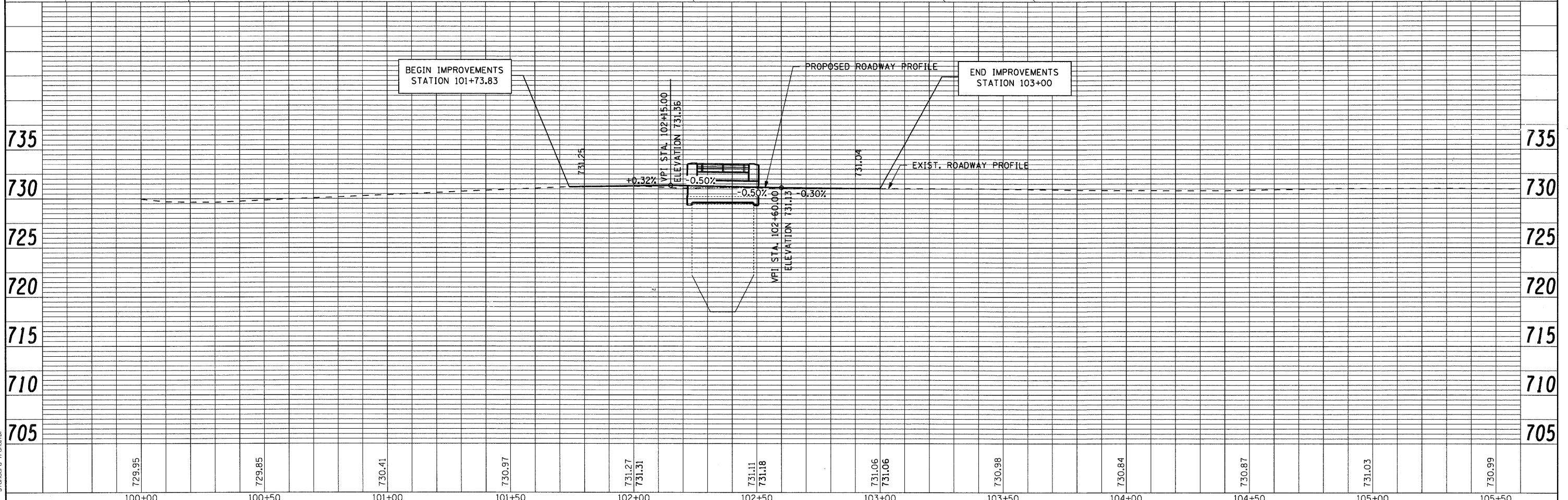
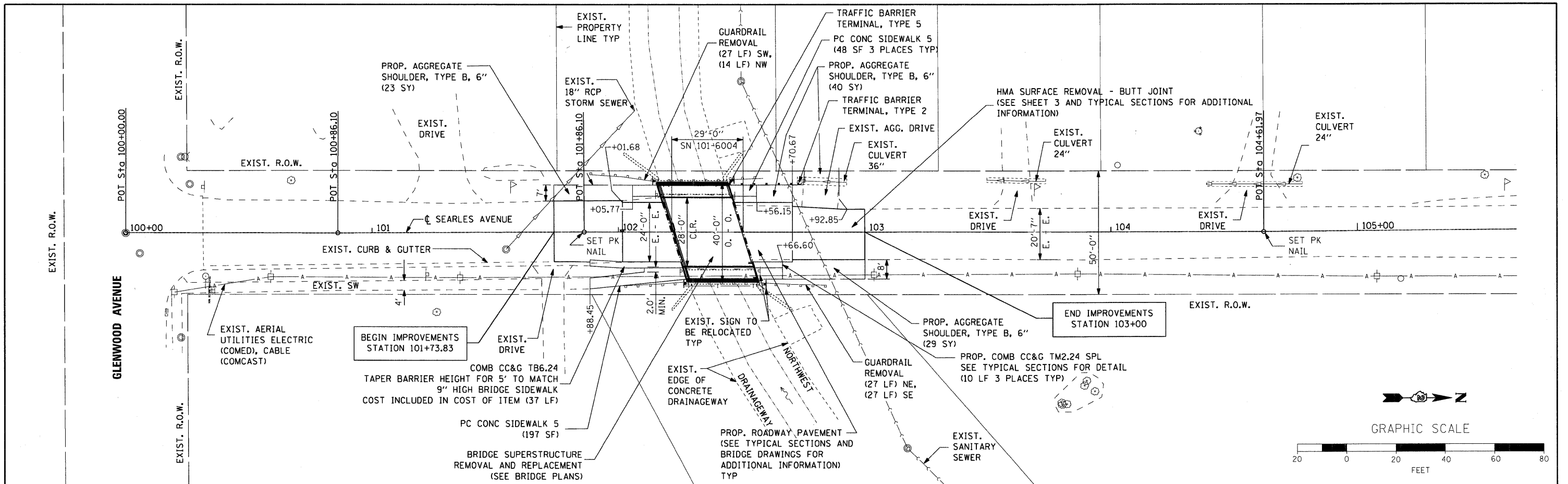
USER NAME = whood	DESIGNED - K. ARFT	REVISED -
FILE NAME = 080217-01-Typ.dgn	DRAWN - WJH	REVISED -
PLOT SCALE = 20	CHECKED - RGD	REVISED -
PLOT DATE = 2/11/2009	DATE - 2/6/09	REVISED -

CITY OF ROCKFORD

SEARLES AVENUE BRIDGE REHABILITATION
TYPICAL SECTIONS

SCALE: 20 SHEET NO. 1 OF SHEETS STA. TO STA.

F.A.U. RTE.	SECTION	COUNTY	TOTAL SHEETS	SHEET NO.
5156	08-00550-00-BR	Winnebago	15	4
FED. ROAD DIST. NO. 2 ILLINOIS FED. AID PROJECT				



COMPANY NAME: SEC GROUP, INC.
 PROJECT CONTACT: Kevin Arft
 CLIENT: City of Rockford
 FILE PLOTTED: 08/21/09 10:06:44 AM
 FILE NAME: 080217-01-ppn.dgn
 PLOT DRIVER: default
 PEN TABLE: standard-trans.tbl

SEC Group, Inc.
 Engineering
 Surveying
 Planning
 Landscape Architecture
 McHenry • Yorkville • New Lenox • Chicago
 www.secgroupinc.com

USER NAME = whoad	DESIGNED - K. ARFT	REVISED -
FILE NAME = 080217-01-ppn.dgn	DRAWN - WJH	REVISED -
PLOT SCALE = 20	CHECKED - RGD	REVISED -
PLOT DATE = 2/4/2009	DATE - 2/6/09	REVISED -

CITY OF ROCKFORD
SEARLES AVENUE BRIDGE REHABILITATION
PLAN AND PROFILE

SCALE: 20 SHEET NO. 1 OF SHEETS STA. TO STA.

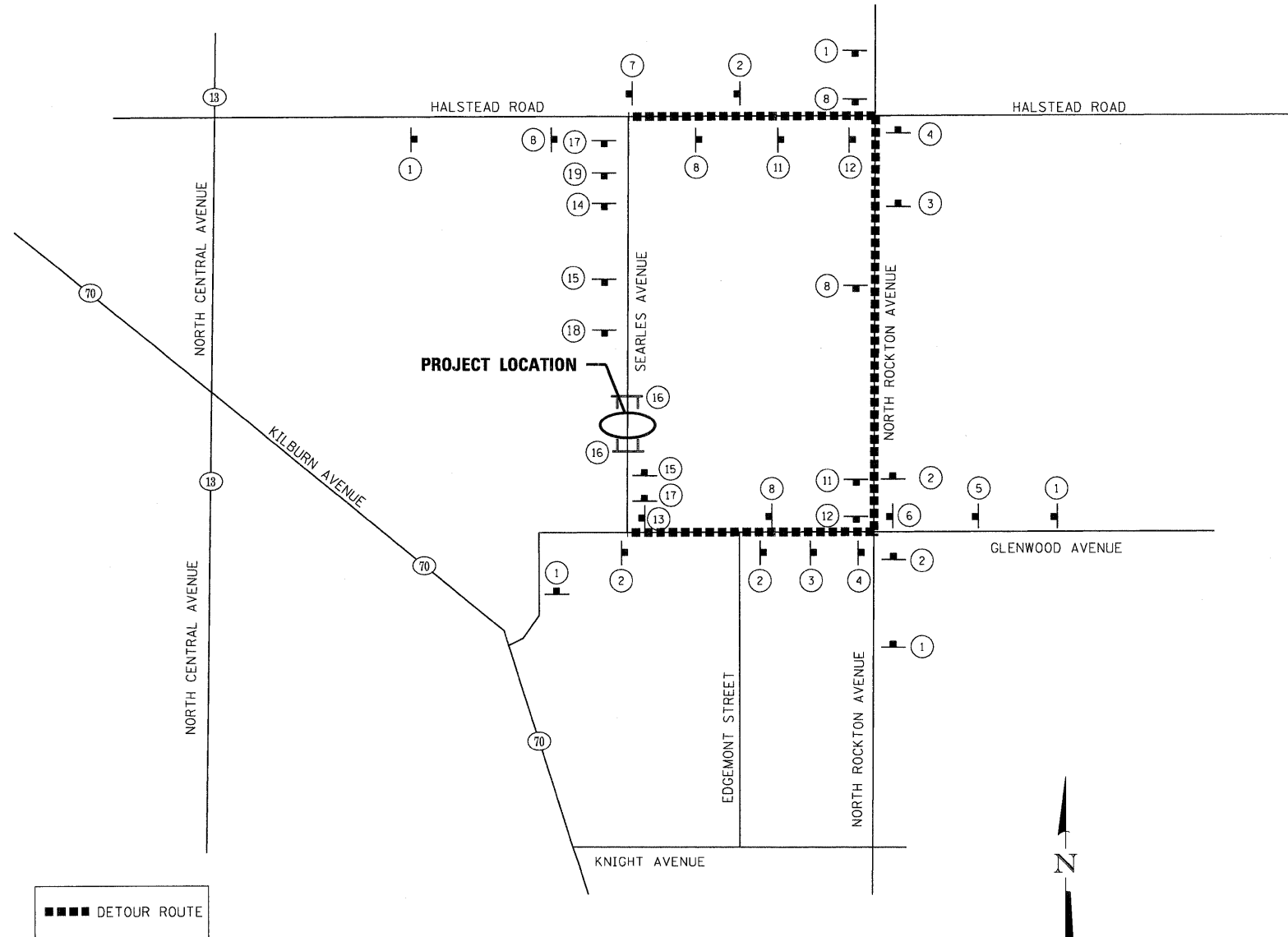
F.A.U. RTE.	SECTION	COUNTY	TOTAL SHEETS	SHEET NO.
5156	08-00550-00-BR	Winnebago	15	5
FED. ROAD DIST. NO. 2 ILLINOIS FED. AID PROJECT			CONTRACT NO. 85444	

ROAD CLOSURE GENERAL NOTES:

1. THE CONTRACTOR WILL BE ALLOWED TO CLOSE SEARLES AVENUE TO THRU TRAFFIC BETWEEN HALSTED ROAD AND GLENWOOD AVENUE IN ACCORDANCE WITH THE SPECIAL PROVISIONS.
2. THE DETOUR ROUTE SHALL BE POSTED PRIOR TO CLOSING THE ROAD.
3. ALL TRAFFIC CONTROL WORK ASSOCIATED WITH THE ROAD CLOSURE, SIGNING, TEMPORARY FENCING, TEMPORARY CONCRETE BARRIER AND BARRICADING SHALL BE INCLUDED IN THE PAY ITEM FOR 'TRAFFIC CONTROL AND PROTECTION, STANDARD BLR 21.'
4. THE CONTRATOR SHALL GIVE THE ENGINEER AND THE CITY A 72 HOUR NOTICE PRIOR TO PLACING THE ADVANCE NOTICE SIGNS.
5. ADVANCE NOTICE SIGNS, (17), SHALL BE PLACED TWO WEEKS PRIOR TO CLOSING THE ROADWAY.
6. ALL SIGNS SHALL CONFORM TO SPACING REQUIREMENTS SET FORTH IN THE 'MANUAL ON UNIFORM TRAFFIC CONTROL DEVICES FOR STREETS AND HIGHWAYS'.
7. THE CONTRACTOR SHALL MAINTAIN ACCESS TO ADJACENT DRIVEWAYS IN ACCORDANCE WITH THE SPECIAL PROVISIONS.

SIGN LEGEND

1		W20-3 (48"x48") WITH STREET SIGN AND FLASHING AMBER LIGHT	10		M4-9L (30"x21") WITH STREET SIGN AND DIRECTION OF TRAFFIC
2		M4-9 (30"x21") WITH STREET SIGN AND DIRECTION OF TRAFFIC	11		M4-9Ra (30"x21") WITH STREET SIGN AND DIRECTION OF TRAFFIC
3		M4-9La (30"x21") WITH STREET SIGN AND DIRECTION OF TRAFFIC	12		M4-9R (30"x21") WITH STREET SIGN AND DIRECTION OF TRAFFIC
4		M4-9L (30"x21") WITH STREET SIGN AND DIRECTION OF TRAFFIC	13		M4-8a (24"x18") WITH STREET SIGN AND INFORMATION SIGN
5		M4-9Ra (30"x21") WITH STREET SIGN AND DIRECTION OF TRAFFIC	14		R11-3a (60"x30')
6		M4-9R (30"x21") WITH STREET SIGN AND DIRECTION OF TRAFFIC	15		W20-2 (48"x48") WITH FLASHING AMBER LIGHT
7		M4-8a (24"x18") WITH STREET SIGN AND INFORMATION SIGN	16		R11-2 (48"x30') WITH 2 FLASHING AMBER LIGHTS
8		M4-9 (30"x21") WITH STREET SIGN AND DIRECTION OF TRAFFIC	17		INFO (48"x30')
9		M4-9La (30"x21") WITH STREET SIGN AND DIRECTION OF TRAFFIC	18		W20-2 (48"x48") WITH FLASHING AMBER LIGHT
			19		W20-2 (48"x48") WITH DISTANCE SIGN AND FLASHING AMBER LIGHT



PROPOSED DETOUR ROUTE
(SEARLES AVENUE - BRIDGE RE-CONSTRUCTION)

COMPANY NAME: SEC GROUP, INC.
 PROJECT CONTACT: Kevin Arft
 CLIENT: City of Rockford
 DATE: 02/09 10:08:27 AM
 FILE NAME: 080217-01-Dtr.dgn
 PLOT DRIVER: pdfplot
 PEN TABLE: standard-trans.tbl

SEC Group, Inc.
 Engineering
 Surveying
 Planning
 Landscape Architecture
 McHenry • Yorkville • New Lenox • Chicago
 www.secgroupinc.com

USER NAME = whood	DESIGNED - K. ARFT	REVISED -
FILE NAME = 080217-01-Dtr.dgn	DRAWN - WJH	REVISED -
PLOT SCALE = 20	CHECKED - RGD	REVISED -
PLOT DATE = 2/4/2009	DATE - 2/6/09	REVISED -

CITY OF ROCKFORD

**SEARLES AVENUE BRIDGE REHABILITATION
 TEMPORARY DETOUR PLAN**

SCALE: 20 SHEET NO. 1 OF SHEETS STA. TO STA.

F.A.U. RTE.	SECTION	COUNTY	TOTAL SHEETS	SHEET NO.
5156	08-00550-00-BR	Winnebago	15	6
FED. ROAD DIST. NO. 2 ILLINOIS FED. AID PROJECT			CONTRACT NO. 85444	

COMPANY NAME: SEC GROUP, INC.
 PROJECT CONTACT: Kevin Arft
 CLIENT: City of Rockford
 DATE PLOTTED: 10/08/09 AM
 FILE NAME: 080217-01-Eros.dgn
 PLOT DRIVER: pdf.plt
 PEN TABLE: standard-trans.tbl



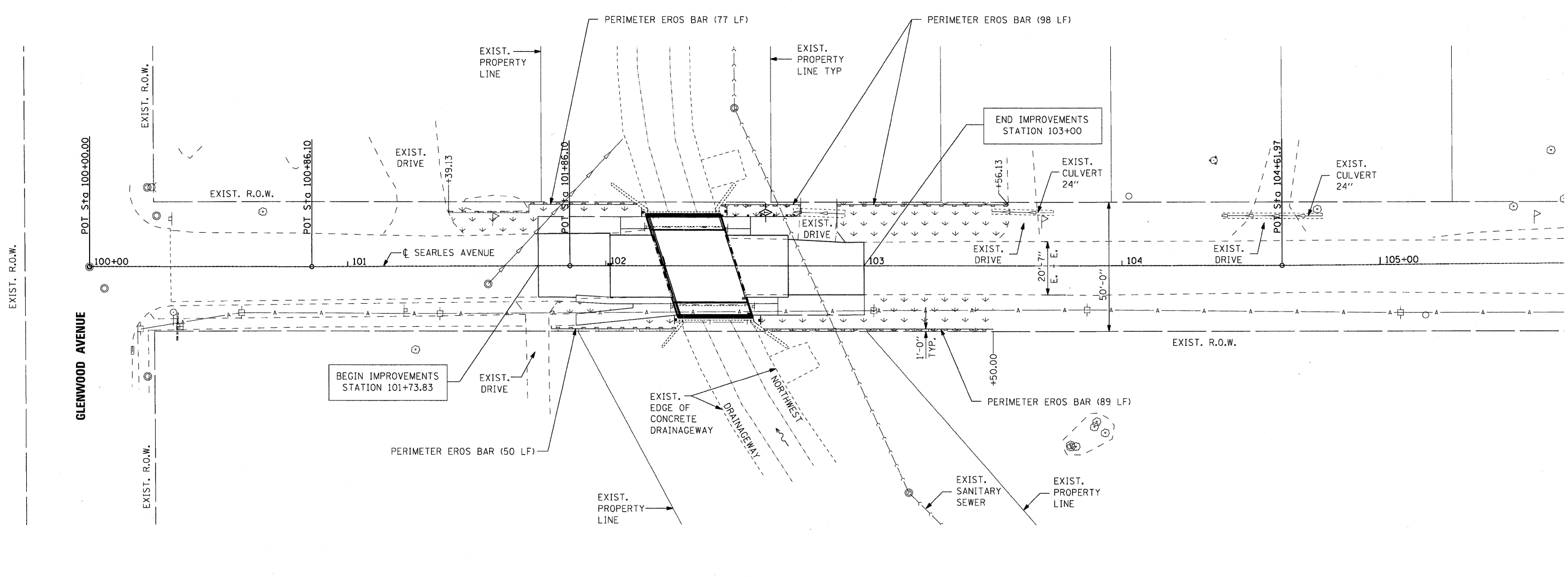
USER NAME = whood	DESIGNED - K. ARFT	REVISED -
FILE NAME = 080217-01-Eros.dgn	DRAWN - WJH	REVISED -
PLOT SCALE = 20	CHECKED - RGD	REVISED -
PLOT DATE = 2/4/2009	DATE - 2/6/09	REVISED -

CITY OF ROCKFORD

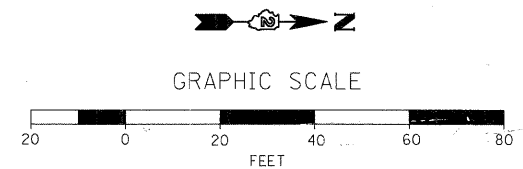
**SEARLES AVENUE BRIDGE REHABILITATION
 EROSION CONTROL & RESTORATION PLAN**

SCALE: 20 SHEET NO. 1 OF SHEETS STA. TO STA.

F.A.U. RTE.	SECTION	COUNTY	TOTAL SHEETS	SHEET NO.
5156	08-00550-00-BR	Winnebago	15	7
CONTRACT NO. 85444				
FED. ROAD DIST. NO. 2 ILLINOIS FED. AID PROJECT				



- FINAL RESTORATION OF DISTURBED AREAS
 - TOPSOIL FURNISH AND PLACE, 4"
 - SEEDING, CL 2A
 - EROSION CONTROL BLANKET
- TEMPORARY DITCH CHECKS



GENERAL NOTES:

Reinforcement bars shall conform to the requirements of ASTM A 706 Gr 60. See Special Provisions.

Reinforcement bars designated (E) shall be epoxy coated.

Plan dimensions and details relative to existing plans are subject to nominal construction variations. The Contractor shall field verify existing dimensions and details affecting new construction and make necessary approved adjustments prior to construction or ordering of materials. Such variations shall not be cause for additional compensation for a change in scope of the work, however, the Contractor will be paid for the quantity actually furnished at the unit price bid for the work.

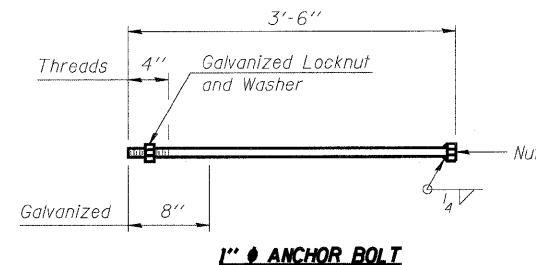
The Contractor shall make allowance for the deflection of forms, shrinkage and settlement of falsework, in addition to allowance for dead load deflection. Forms for deck slab shall be removed prior to placement of bridge approach pavement.

Excavation behind existing abutment walls shall be performed to balance front and back soil pressure before removing the existing superstructure.

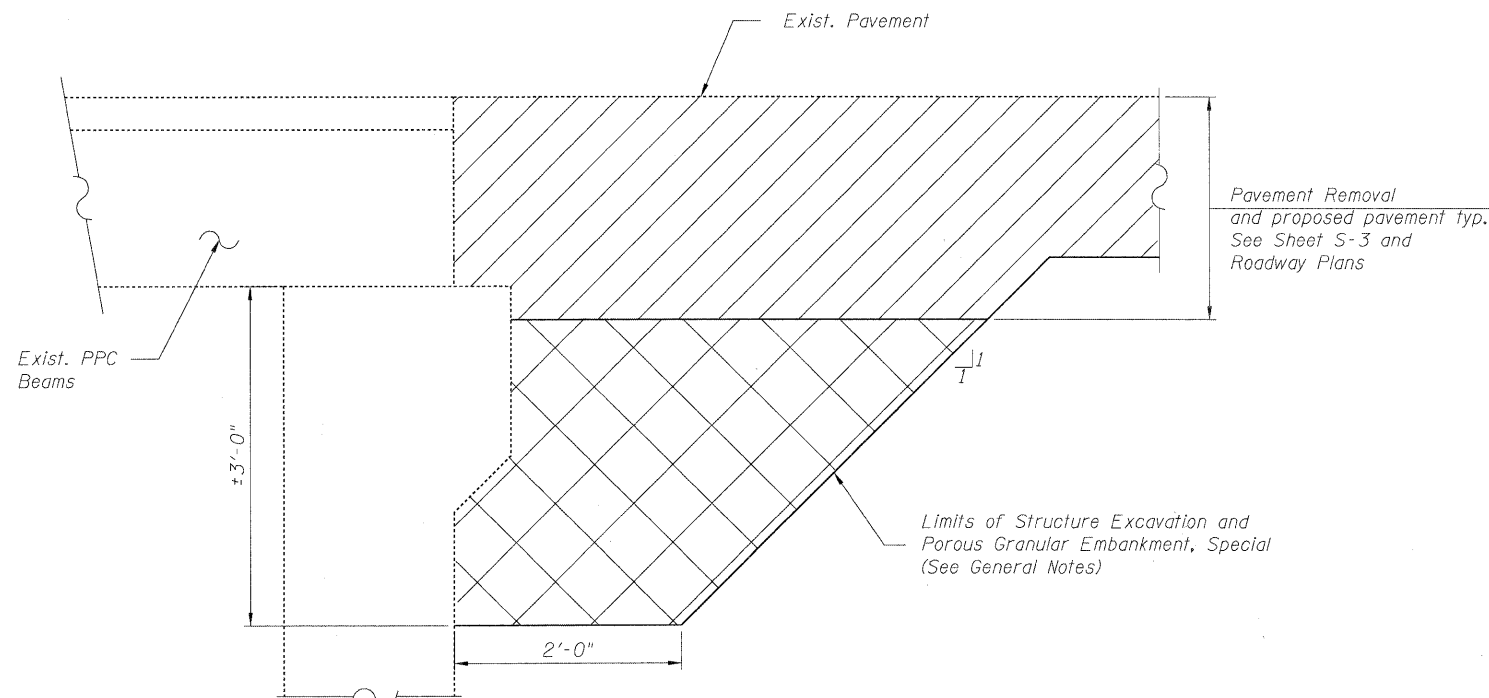
Backfill shall be placed behind the abutment after the superstructure has been poured and falsework removed. See Article 502.10 of the Standard Specifications.

TOTAL BILL OF MATERIAL

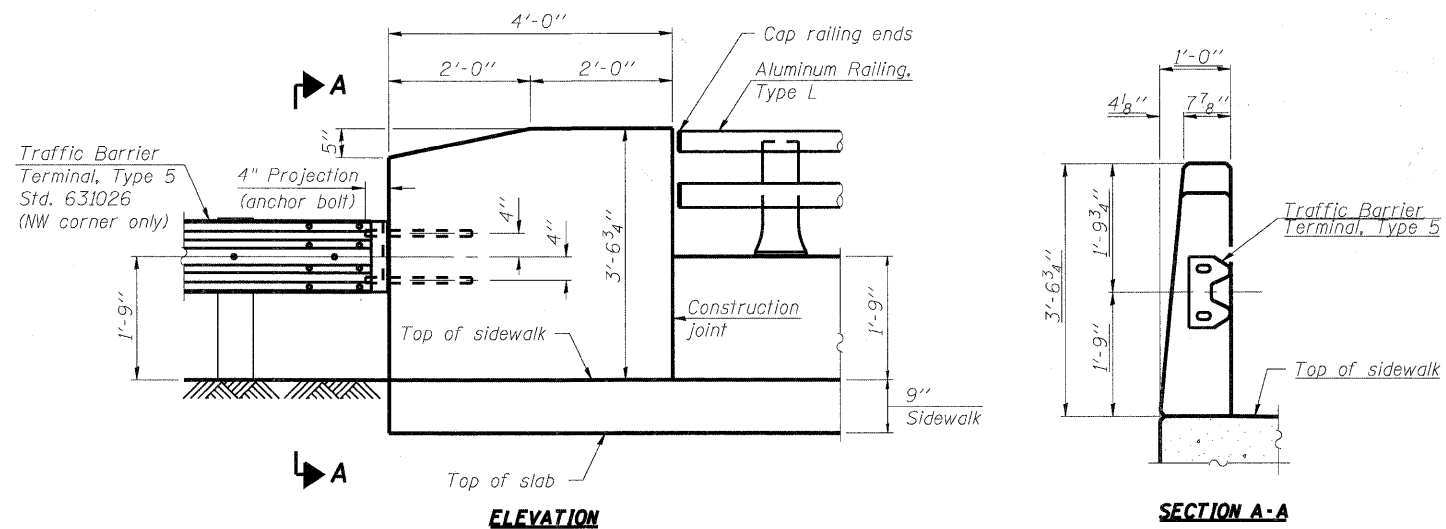
ITEM	UNIT	SUPER	SUB	TOTAL
Porous Granular Embankment, Special	Cu. Yd.	-	37	37
Structure Excavation	Cu. Yd.	-	37	37
Removal of Existing Superstructure	Each	1	-	1
Concrete Removal	Cu. Yd.	-	2.1	2.1
Concrete Superstructure	Cu. Yd.	75.1	-	75.1
Bridge Deck Grooving	Sq. Yd.	84	-	84
Protective Coat	Sq. Yd.	152	-	152
Reinforcement Bars, Epoxy Coated	Pound	13,170	-	13,170
Aluminum Railing, Type L	Foot	42	-	42
Name Plate	Each	1	-	1
Epoxy Crack Injection	Foot	-	27	27
Structural Repair of Concrete (Depth less than or equal to 5")	Sq. Ft.	-	25	25



Cost included in Concrete Superstructure



SECTION THRU ABUTMENT



END TREATMENT DETAIL

NOTES:

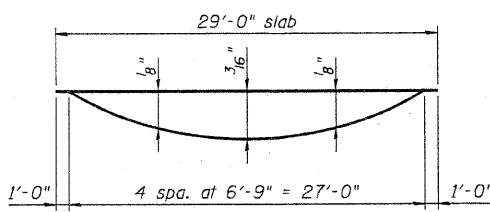
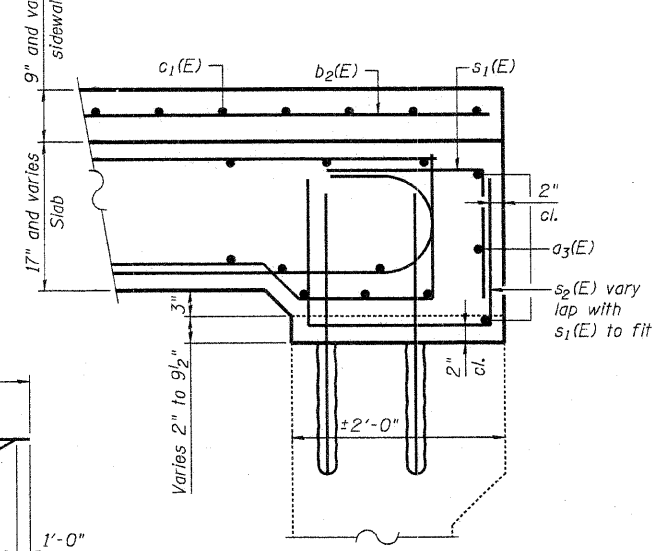
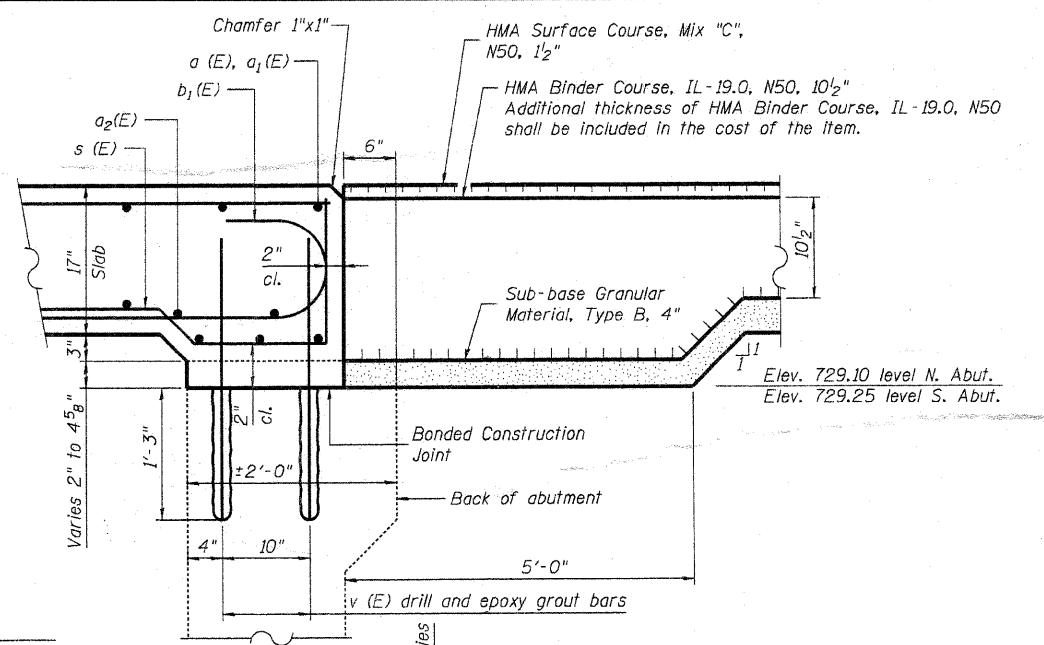
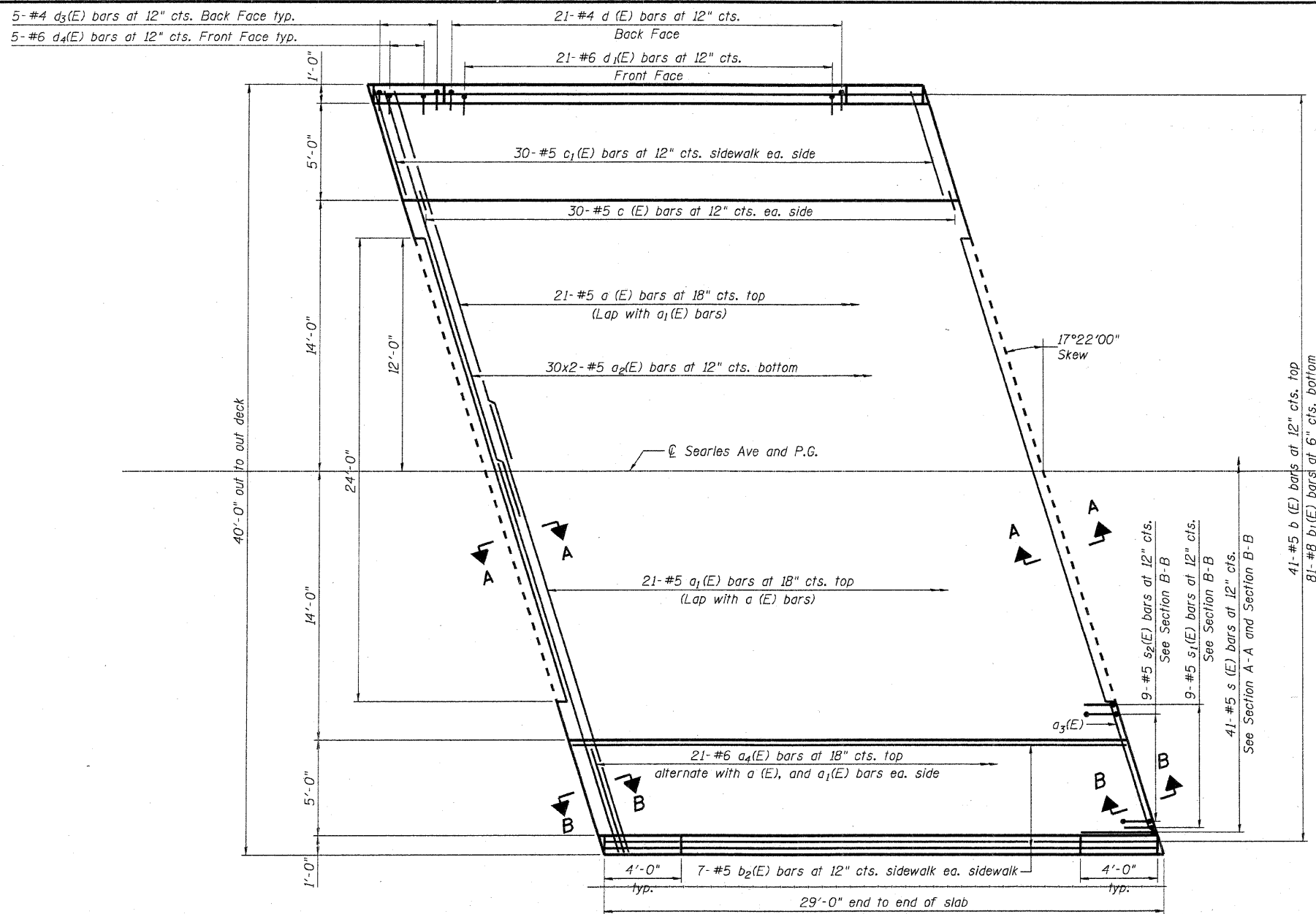
Work this sheet with sheet S-4.

GENERAL NOTES AND TOTAL BILL OF MATERIAL
SEARLES AVENUE (FAU ROUTE 5156)
OVER THE NORTHWEST DRAINAGEWAY
CITY OF ROCKFORD
WINNEBAGO COUNTY
S.N. 101-6004 **DATE: 2/6/09**

DESIGNED	KMA
CHECKED	RGD
DRAWN	WJH
CHECKED	RGD

SEC GROUP, INC.
 Illinois Professional Design Firm # 184-000108
 • Engineering • Surveying • Planning • Landscape Architecture
 4500 Prime Parkway, McHenry, IL 60050
 t. 815.385.1778 f. 815.385.1781
 www.secgroupinc.com
 • McHenry, IL • Yorkville, IL • New Lenox, IL • Chicago, IL

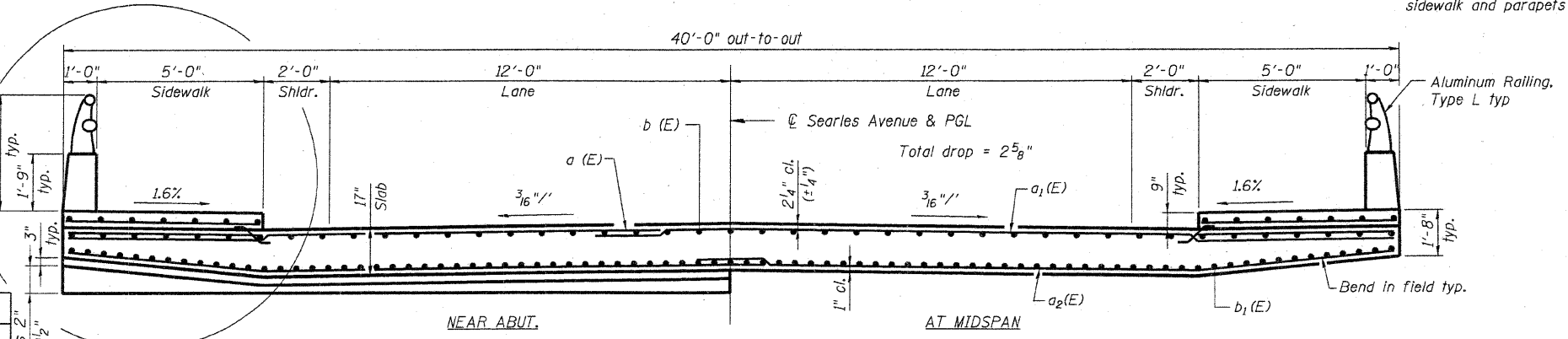
SHEET NO. S-2	F.A.U. RTE.	SECTION	COUNTY	TOTAL SHEETS	SHEET NO.
	5156	08-00550-00-BR	Winnebago	15	9
S-6 SHEETS			CONTRACT NO. 85444		
FED. ROAD DIST. NO. 2 ILLINOIS FED. AID PROJECT BHM 5099 (077)					



MINIMUM BAR LAP

- #5 bar = 3'-0"
- #6 bar = 3'-7"
- #8 bar = 6'-4"

See Superstructure Details typ.



CROSS SECTION
(Looking North)

DESIGNED	KMA
CHECKED	RGD
DRAWN	WJH
CHECKED	RGD

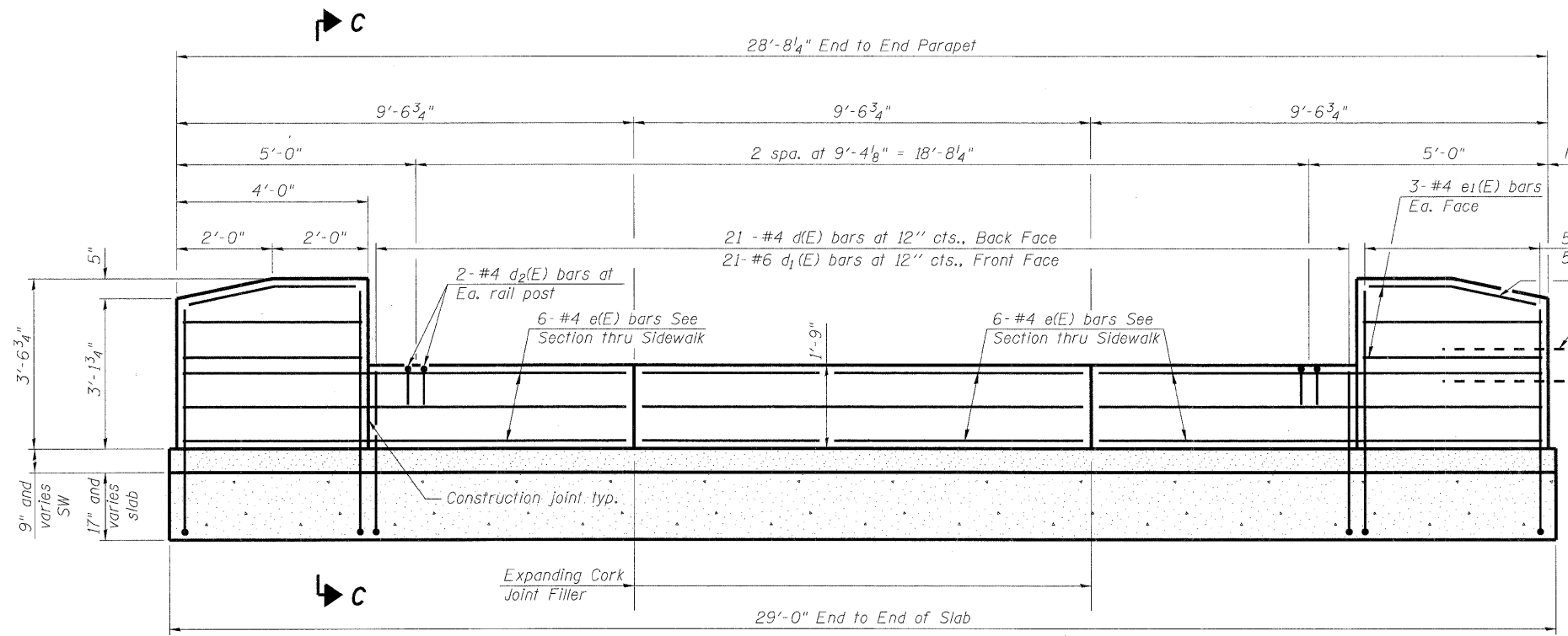
SEC GROUP, INC.
Illinois Professional Design Firm # 104-000108
• Engineering • Surveying • Planning • Landscape Architecture
4500 Prairie Pathway, Mokena, IL 60450
t. 815.395.1778 f. 815.395.1761
www.secgroupinc.com
• Mokena, IL • Yorkville, IL • New Lenox, IL • Chicago, IL

Work this sheet with sheet S-5.

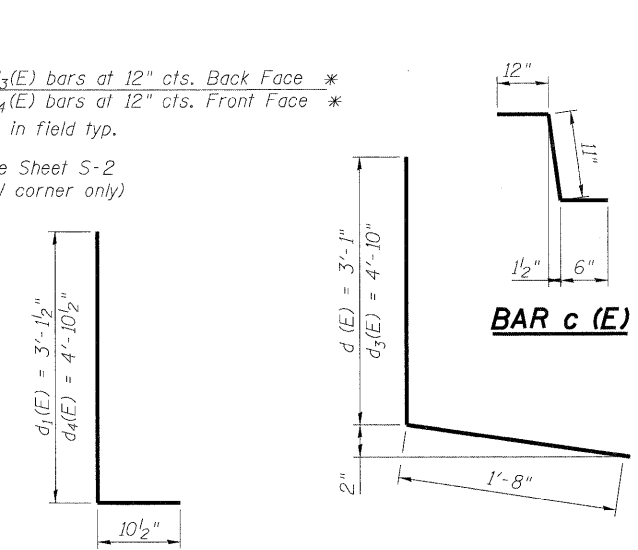
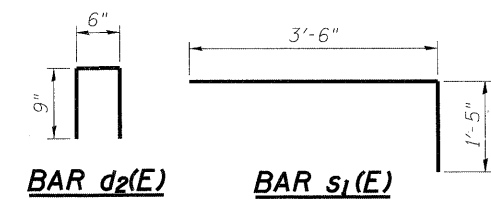
Cost for drilling and epoxy grouting v(E) bars included in the cost of Reinforcement Bars (Epoxy Coated)

SUPERSTRUCTURE PLAN AND CROSS SECTION
SEARLES AVENUE (FAU ROUTE 5156) OVER THE NORTHWEST DRAINAGEWAY
CITY OF ROCKFORD WINNEBAGO COUNTY
S.N. 101-6004

SHEET NO. S-3 S-6 SHEETS	F.A.U. RTE.	SECTION	COUNTY	TOTAL SHEETS	SHEET NO.
	5156	08-00550-00-BR	Winnebago	15	10
CONTRACT NO. 85444			DATE: 2/6/09		
FED. ROAD DIST. NO. 2 ILLINOIS			FED. AID PROJECT BHM 5099 (077)		



INSIDE ELEVATION OF PARAPET
* Trim bars to fit

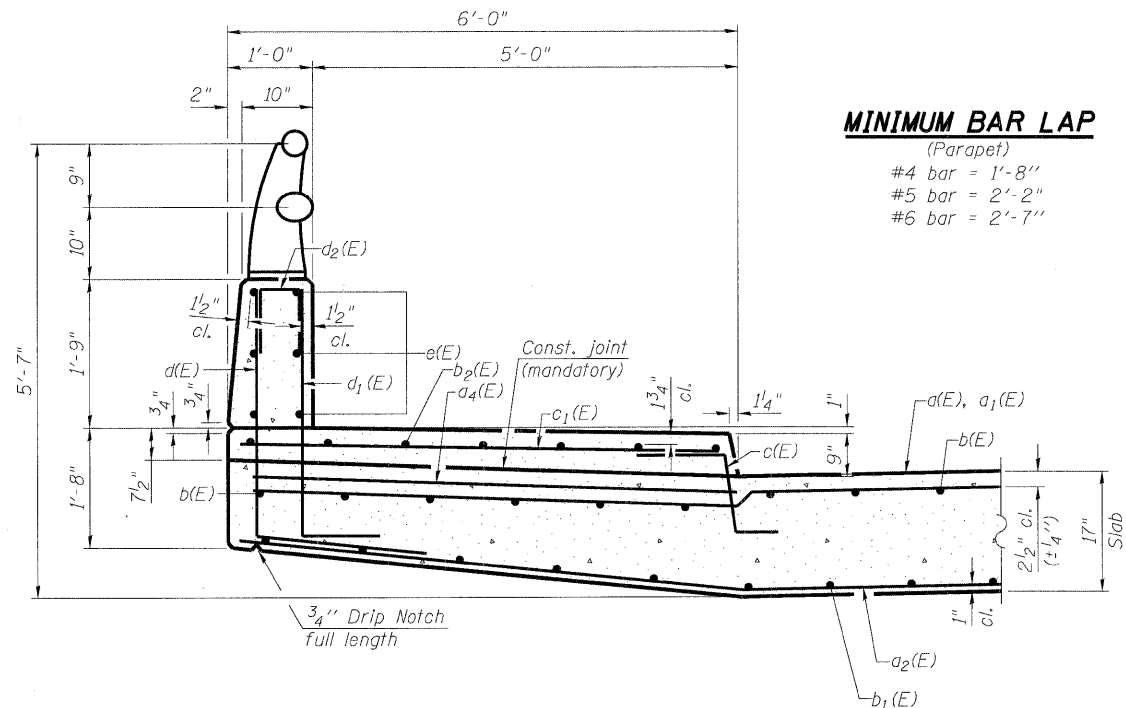


BAR d1(E), d4(E) and **BAR d(E), d3(E)**

SUPERSTRUCTURE BILL OF MATERIAL

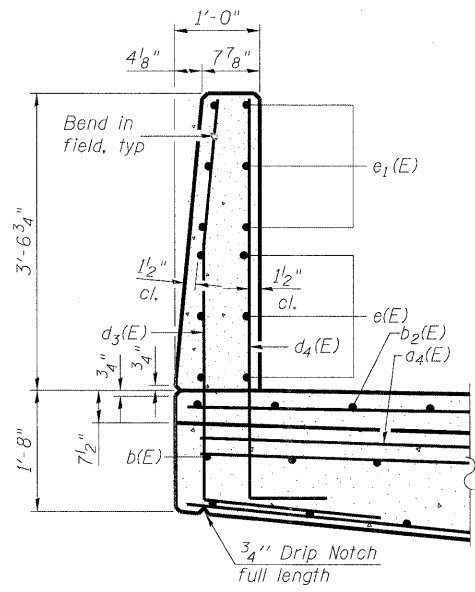
Bar	No.	Size	Length	Shape
d(E)	21	#5	19'-10"	—
a1(E)	21	#5	24'-10"	—
a2(E)	60	#5	22'-4"	—
a3(E)	12	#5	8'-0"	—
a4(E)	42	#6	6'-0"	—
b(E)	41	#5	27'-8"	—
b1(E)	81	#8	29'-6"	—
b2(E)	14	#5	28'-8"	—
c(E)	60	#5	2'-5"	—
c1(E)	60	#5	5'-11"	—
d(E)	42	#4	4'-9"	—
d1(E)	42	#6	4'-0"	—
d2(E)	12	#4	2'-0"	—
d3(E)	20	#4	6'-6"	—
d4(E)	20	#6	5'-9"	—
e(E)	36	#4	9'-2"	—
e1(E)	24	#4	3'-8"	—
s(E)	82	#5	6'-1"	—
s1(E)	36	#5	4'-11"	—
s2(E)	36	#5	4'-6"	—
Reinforcement Bars, Epoxy Coated		Pound	13,170	
Concrete Superstructure		Cu. Yds.	75.1	
Bridge Deck Grooving		Sq. Yds.	84	
Protective Coat		Sq. Yds.	152	

Bars indicated thus 1 x 2 - #8 etc. indicates 1 line of bars with 2 lengths per line.

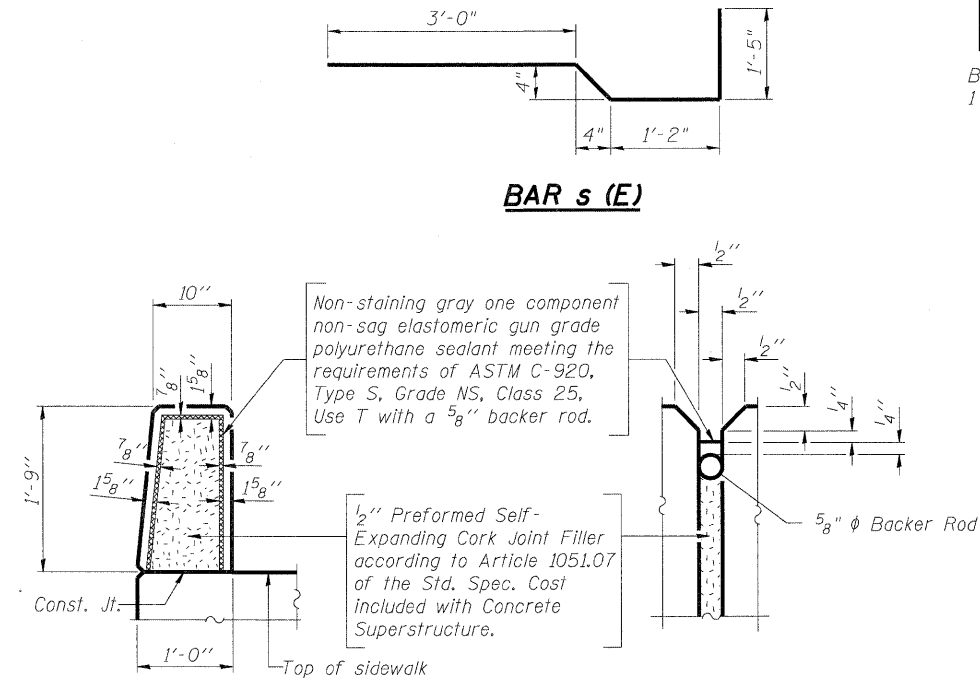


SECTION THRU SIDEWALK

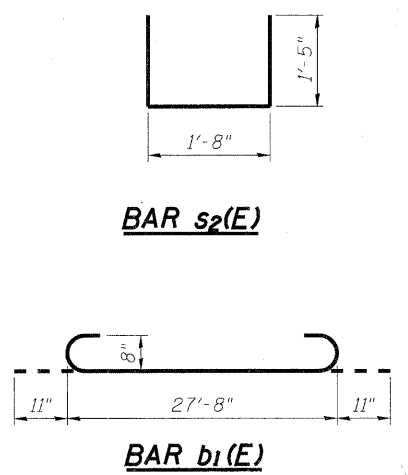
MINIMUM BAR LAP
(Parapet)
#4 bar = 1'-8"
#5 bar = 2'-2"
#6 bar = 2'-7"



SECTION C-C
See Section Thru Sidewalk for additional details.



PARAPET JOINT DETAILS



SUPERSTRUCTURE DETAILS

**SEARLES AVENUE (FAU ROUTE 5156)
OVER THE NORTHWEST DRAINAGEWAY
CITY OF ROCKFORD
WINNEBAGO COUNTY
S.N. 101-6004**

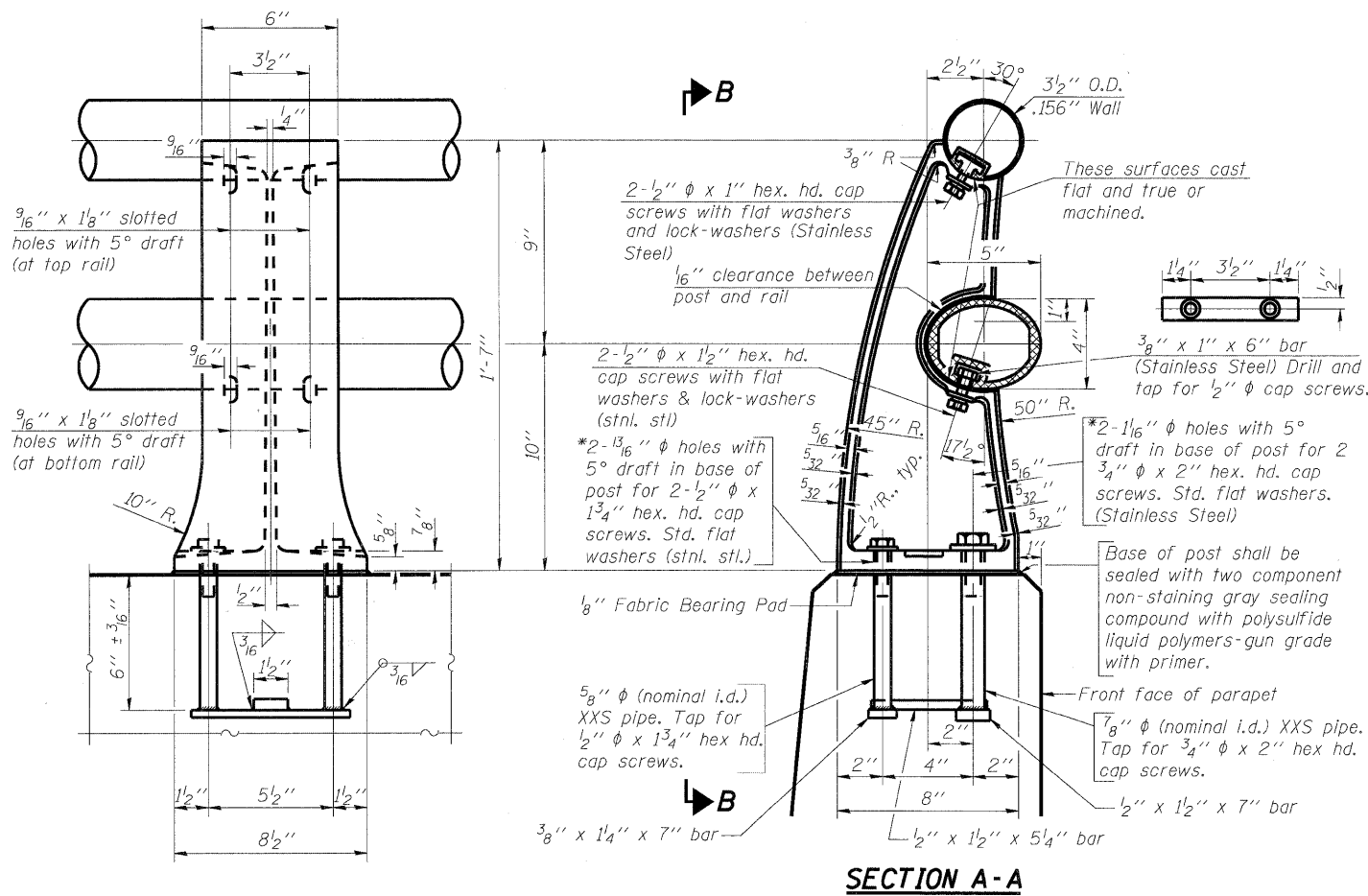
DATE: 2/6/09

DESIGNED	KMA
CHECKED	RGD
DRAWN	WJH
CHECKED	RGD

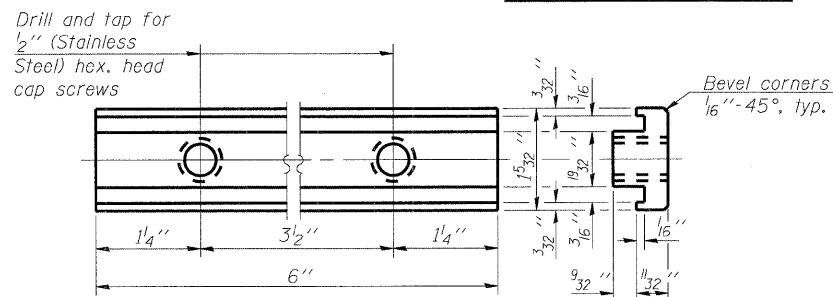
S-D 5-16-08

SEC GROUP, INC.
Illinois Professional Design Firm # 184-000108
• Engineering • Surveying • Planning • Landscape Architecture
4500 Prime Parkway, McHenry, IL 60050
t. 815.386.1778 f. 815.386.1781
www.secgroupinc.com
• McHenry, IL • Yorkville, IL • New Lenox, IL • Chicago, IL

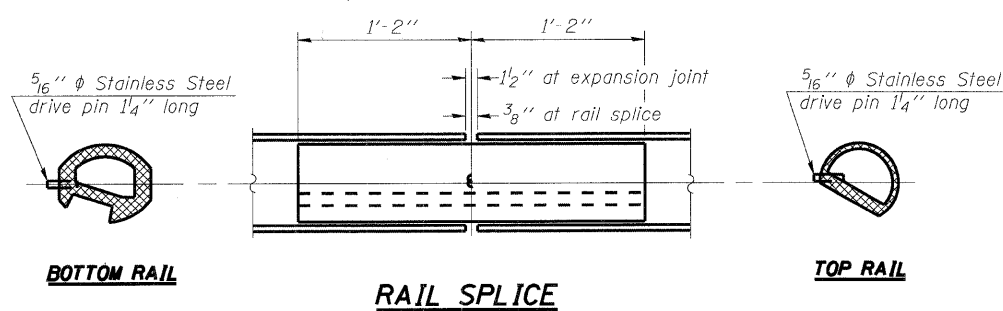
SHEET NO. S-4 S-6 SHEETS	F.A.U. RTE. 5156	SECTION 08-00550-00-BR	COUNTY Winnebago	TOTAL SHEETS 15	SHEET NO. 11
	CONTRACT NO. 85444			FED. ROAD DIST. NO. 2 ILLINOIS FED. AID PROJECT BHM 5099 (077)	



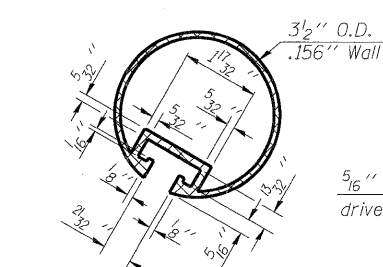
VIEW B-B RAIL POST DETAILS



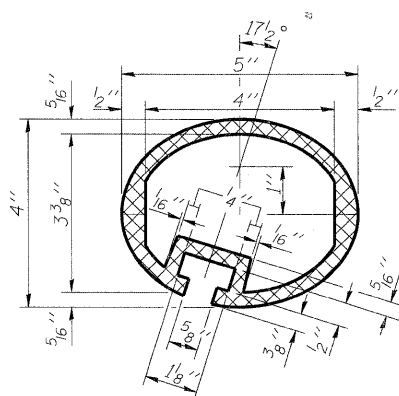
RAIL POST CLAMP BAR For Top Rail



RAIL SPLICE

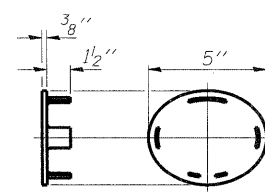


SECTION THRU TOP RAIL

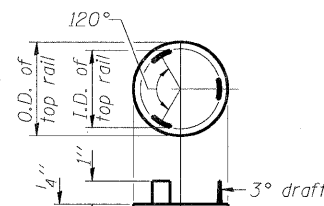


SEC. THRU ELLIPTICAL RAIL SECTION

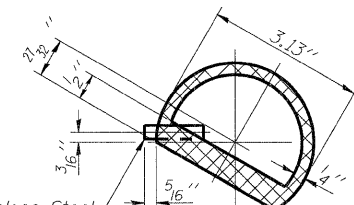
*In lieu of the cast-in-place anchor device shown, the Contractor has the option of drilling and setting stainless steel anchor rods of the same diameter and grade as the specified cap screws according to Article 509.06 of the Standard Specifications. Embedment shall be according to the manufacturer's specifications.



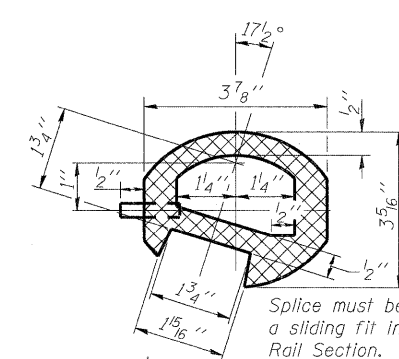
CAST END CAP For bottom rail DRIVE FIT TYPE



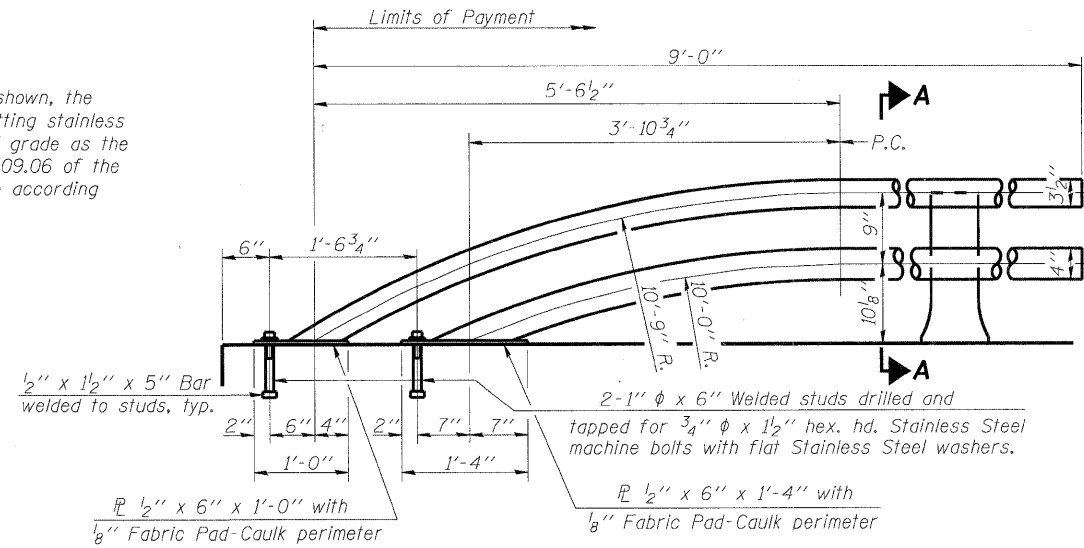
CAST END CAP For top rail



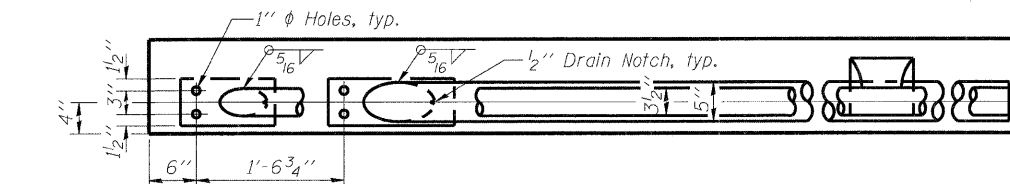
SECTION THRU SPLICE For Top Rail



SEC. THRU SPLICE



RAIL TERMINAL SECTION



RAIL END TREATMENT FOR TYPE 5 AND 6 TERMINAL

Note: The end rail post shall be set back as required for the terminal rail section.

Notes:
 All Posts shall be normal to parapet.
 All joints in rail shall be spliced per detail.
 All exposed rail ends shall be capped per detail.
 Provide 1-1/8" and 2-1/8" Aluminum Shims for 25% of the Posts. Rail elements shall be parallel to Grade-high spots will be ground and low spots shimmed.
 See sheet S-4 for rail post spacing.

BILL OF MATERIAL

Item	Unit	Quantity
Aluminum Railing, Type L	Foot	42

ALUMINUM RAILING, TYPE L
 SEARLES AVENUE (FAU ROUTE 5156)
 OVER THE NORTHWEST DRAINAGEWAY
 CITY OF ROCKFORD
 WINNEBAGO COUNTY
 S.N. 101-6004

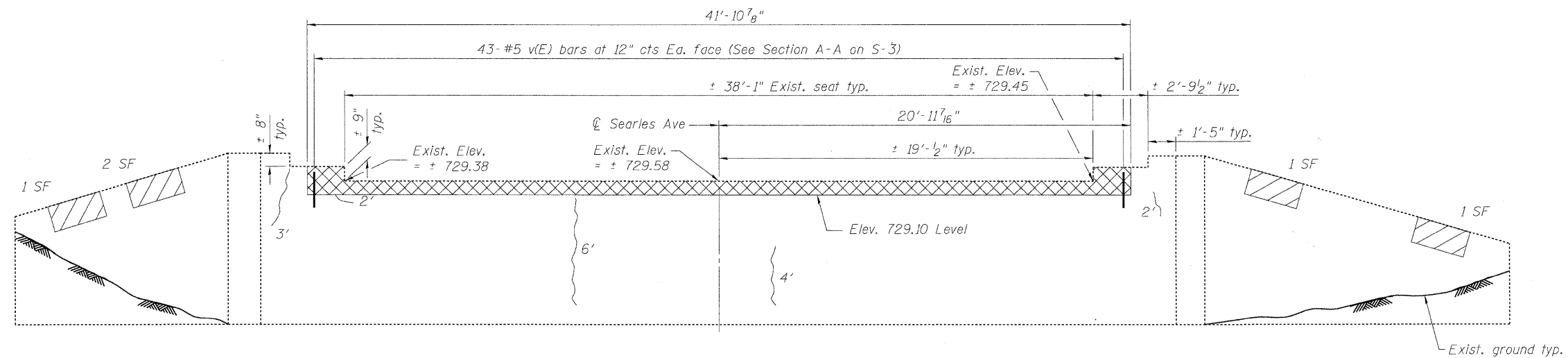
DESIGNED	KMA
CHECKED	RGD
DRAWN	WJH
CHECKED	RGD

R-20 5-16-08 (7'-0" to 10'-0" Post spacing)

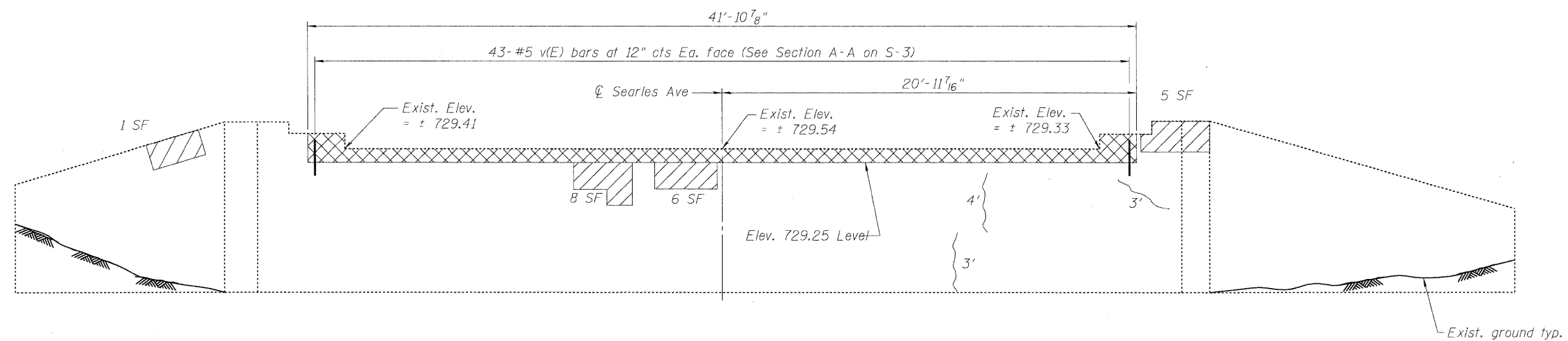
SEC GROUP, INC.
 Illinois Professional Design Firm # 184-000108
 • Engineering • Surveying • Planning • Landscape Architecture
 4500 Prime Parkway, McHenry, IL 60050
 T. 815.385.1778 F. 815.385.1781
 www.secgroupinc.com
 • McHenry, IL • Yorkville, IL • New Lenox, IL • Chicago, IL

SHEET NO.	F.A.U RTE.	SECTION	COUNTY	TOTAL SHEETS	SHEET NO.
S-5	5156	08-00550-00-BR	Winnebago	15	12
S-6 SHEETS			CONTRACT NO. 85444		
FED. ROAD DIST. NO. 2 ILLINOIS FED. AID PROJECT BHM 5099 (077)					

DATE: 2/6/09



NORTH ABUTMENT ELEVATION
(Looking North)

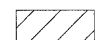
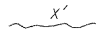



SOUTH ABUTMENT ELEVATION
(Looking South)

BILL OF MATERIAL

ITEM	UNIT	QUANTITY
Concrete Removal	Cu. Yd.	2.1
Epoxy Crack Injection	Foot	27
Structural Repair of Concrete (Depth Less Than or Equal to 5")	Sq. Ft.	25

LEGEND

-  Indicates Structural Repair of Concrete (Depth Less Than or Equal to 5")
-  Indicates Epoxy Crack Injection
-  Indicates Concrete Removal

DESIGNED	KMA
CHECKED	RGD
DRAWN	WJH
CHECKED	RGD

Work this sheet with sheet S-3.

ABUTMENT DETAILS
SEARLES AVENUE (FAU ROUTE 5156)
OVER THE NORTHWEST DRAINAGEWAY
CITY OF ROCKFORD
WINNEBAGO COUNTY
S.N. 101-6004

DATE: 2/6/09

SEC GROUP, INC.
Illinois Professional Design Firm # 184-000108
• Engineering • Surveying • Planning • Landscape Architecture
4500 Prime Parkway, McHenry, IL 60050
T. 815.385.1778 F. 815.385.1781
www.secgroupinc.com
• McHenry, IL • Yorkville, IL • New Lenox, IL • Chicago, IL

SHEET NO. S-6 S-6 SHEETS	F.A.U. RTE.	SECTION	COUNTY	TOTAL SHEETS	SHEET NO.
	5156	08-00550-00-BR	Winnebago	15	13
			CONTRACT NO. 85444		
FED. ROAD DIST. NO. 2 ILLINOIS FED. AID PROJECT BHM 5099 (077)					

COMPANY NAME: SEC GROUP, INC.
 PROJECT CONTACT: Kevin Arft
 CLIENT: City of Rockford
 DATE PLOTTED: 2/4/2009 10:08:34 AM
 FILE NAME: 080217-01-xsec01.dgn
 PLOT DATE: 2/4/2009
 PLOTTER: HP DesignJet 2500
 PEN TABLE: standard.ctb



SEC Group, Inc.
 Engineering
 Surveying
 Planning
 Landscape Architecture
 McHenry • Yorkville • New Lenox • Chicago
 www.secgroupinc.com

USER NAME = whood	DESIGNED - K. ARFT	REVISED -
FILE NAME = 080217-01-xsec01.dgn	DRAWN - WJH	REVISED -
PLOT SCALE = 10H:5V	CHECKED - RGD	REVISED -
PLOT DATE = 2/4/2009	DATE - 2/6/09	REVISED -

CITY OF ROCKFORD

**SEARLES AVENUE BRIDGE REHABILITATION
CROSS SECTIONS**

SCALE: 10H:5V SHEET NO. OF SHEETS STA. 101+75.00 TO STA. 102+82.00

F.A.U. RTE.	SECTION	COUNTY	TOTAL SHEETS	SHEET NO.
5156	08-00550-00-BR	Winnebago	15	14
FED. ROAD DIST. NO. 2 ILLINOIS FED. AID PROJECT			CONTRACT NO. 85444	

COMPANY NAME: SEC GROUP, INC.
 PROJECT CONTACT: Kevin Arft
 CLIENT: City of Rockford
 DATE PLOTTED: 2/4/2009 10:08:06 AM
 FILE NAME: 080217-01-xsec02.dgn
 PLOT NUMBER:
 PLOT TABLE:



SEC Group, Inc.
 Engineering
 Surveying
 Planning
 Landmarks/Architecture
 McHenry • Yorkville • New Lenox • Chicago
 www.secgroupinc.com

USER NAME = whood	DESIGNED - K. ARFT	REVISED -
FILE NAME = 080217-01-xsec02.dgn	DRAWN - WJH	REVISED -
PLOT SCALE = 10H:5V	CHECKED - RGD	REVISED -
PLOT DATE = 2/4/2009	DATE - 2/6/09	REVISED -

CITY OF ROCKFORD

SEARLES AVENUE BRIDGE REHABILITATION CROSS SECTIONS	
SCALE: 10H:5V	SHEET NO. OF SHEETS STA. 103+00.00 TO STA. 103+50.00

F.A.U. RTE. 5156	SECTION 08-00550-00-BR	COUNTY Winnebago	TOTAL SHEETS 15	SHEET NO. 15
CONTRACT NO. 85444				

FED. ROAD DIST. NO. 2 [ILLINOIS] FED. AID PROJECT				
---	--	--	--	--