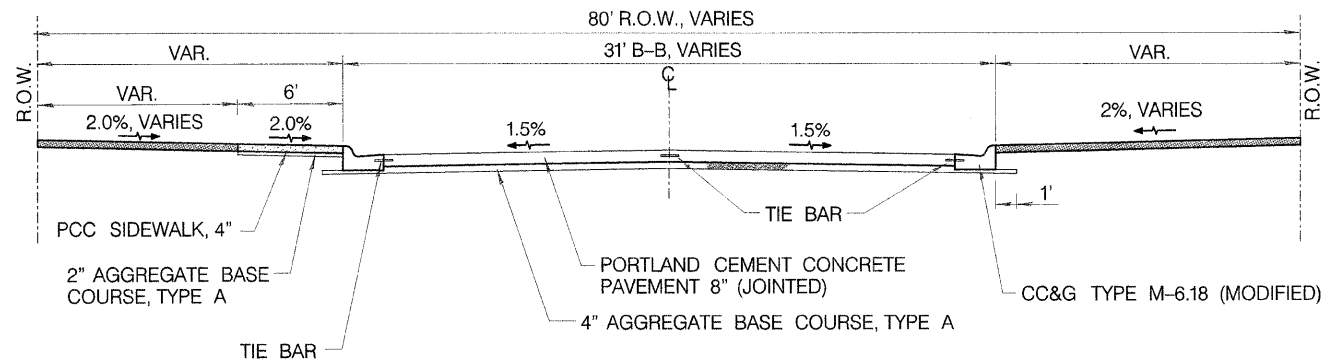


PLAN	SUBMITTED	DATE
	PLOTTED	
	ALIGNMENT CHECKED	
	GRADES CHECKED	
	PAID FILE NAME	
	NO.	

PROFILE	DESIGNED	DATE
	PLOTTED	
	GRADES CHECKED	
	STRUCTURE NOTATIONS CHECKED	
	NO.	



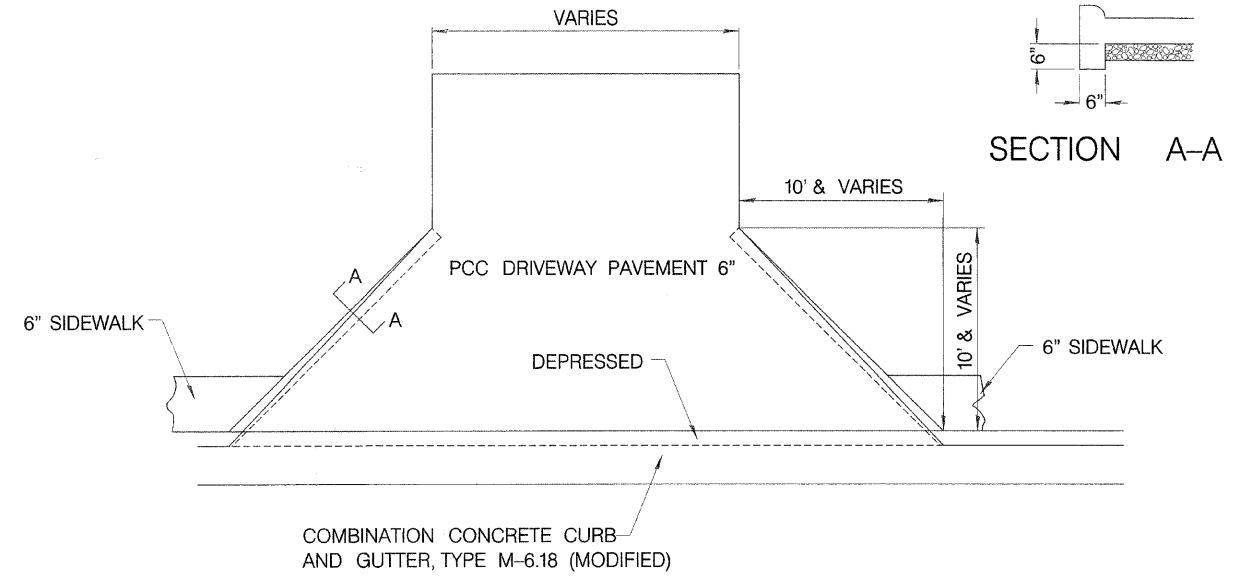
STA. 18+30.00 TO 20+03.38
STA. 20+26.64 TO 21+20.00
INDEPENDENCE AVENUE

PAVEMENT STRUCTURAL DESIGN

STRUCTURAL DESIGN TRAFFIC (S.D.T.) = YEAR 2018 P.V. 301
CLASS IV STREET S.U. 31
SOIL SUPPORT = FAIR M.U. 10
80,000 # TRUCK DESIGN ADT 342

TF = 0.50 USE
MEDIUM RELIABILITY PCC 8"
12.5' TRANSVERSE JOINT SPACING SUBGRADE 4"
THICKNESS 6.75"
SUBGRADE 4"

NOTE: DUE TO POTENTIAL FOR INCREASE IN TRUCK TRAFFIC USE 8" PAVEMENT THICKNESS



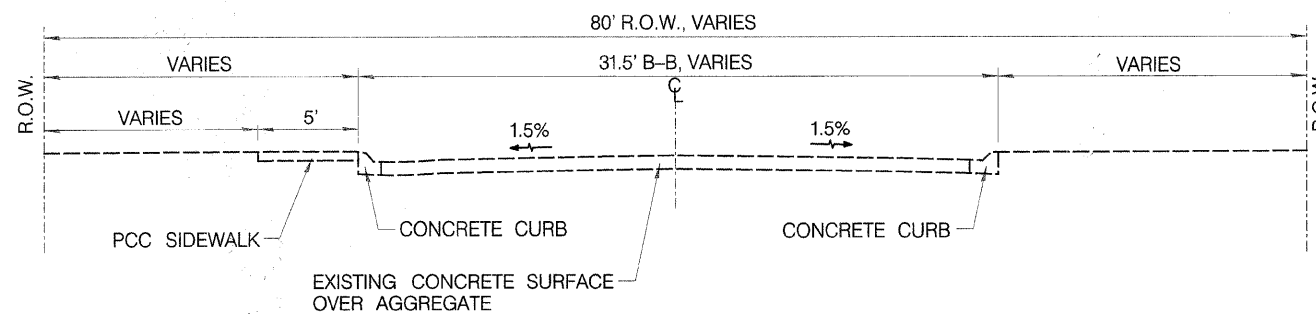
ENTRANCE TYPICAL

GENERAL NOTES

The Contractor shall adjust sanitary manholes in accordance with the specifications and the following Rock River Water Reclamation District manhole adjustment requirements:

1. A minimum of 4" adjusting rings (Adjusting rings not required in turf areas or curb & gutter roadways; if provided the minimum is 4".)
2. A maximum of 12" adjusting rings.
3. No more than one (1) 2-inch adjusting ring per manhole.
4. A maximum of 30" from the top of casting to the first step.
5. Manhole adjustment by grouting is not permitted.

All driveways scheduled for removal located behind the sidewalk shall be reconstructed with concrete.



EXISTING TYPICAL CROSS-SECTION

FILE NAME = c:\rockford\1025809\indepave\1\pavestructure.dgn

WILLET, HOFMANN & ASSOCIATES, INC.
CONSULTING ENGINEERS
809 East Second Street, Dixon, IL 61021
Phone 815.284.3381 Fax 815.284.3385
Design Firm # 194-00918
www.willett-hofmann.com

USER NAME =	DESIGNED - SMG	REVISED -
	DRAWN - SMG	REVISED -
PLOT SCALE =	CHECKED - GS	REVISED -
PLOT DATE =	DATE - 1-9-09	REVISED -

CITY OF ROCKFORD
INDEPENDENCE AVENUE
OVER S. BRANCH OF KENT CREEK

General Notes & Typical Sections

F.A. RTE.	SECTION	COUNTY	TOTAL SHEETS	SHEET NO.
	98-00484-00-BR	WINNEBAGO	18	5
STA.	TO STA.	CONTRACT NO. 85453		
FED. ROAD DIST. NO. - ILLINOIS FED. AID PROJECT				