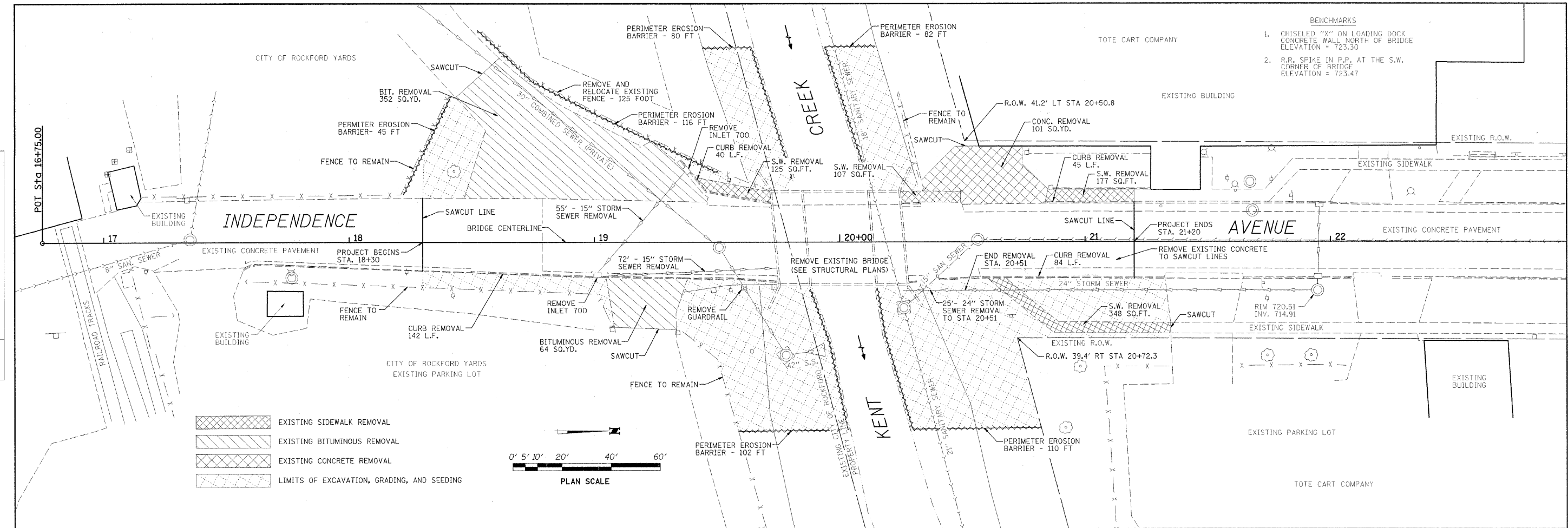
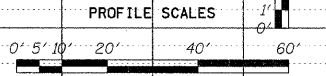
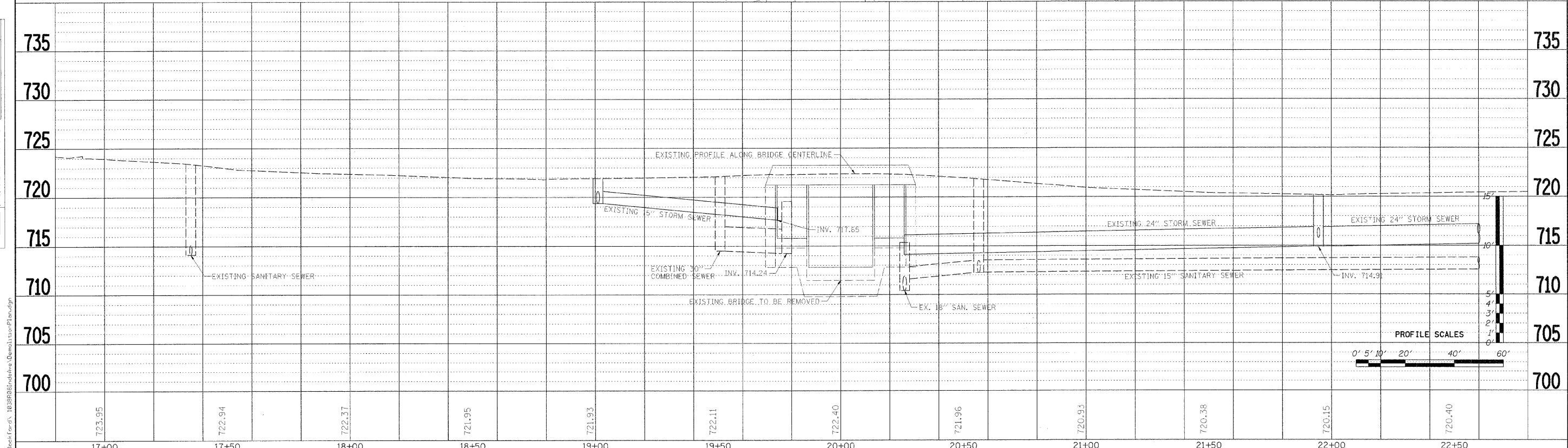
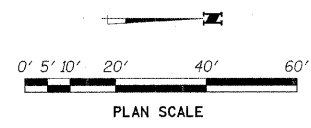


PLAN	DESIGNED	BY	DATE
	CHECKED		
	PLOTTED		
	ALIGNED		
	FILED		
	NO.		
	NO.		
	NO.		
	NO.		

PROFILE	DESIGNED	BY	DATE
	CHECKED		
	PLOTTED		
	NO.		
	NO.		
	NO.		
	NO.		



- EXISTING SIDEWALK REMOVAL
- EXISTING BITUMINOUS REMOVAL
- EXISTING CONCRETE REMOVAL
- LIMITS OF EXCAVATION, GRADING, AND SEEDING



723.95	722.94	722.37	721.95	721.93	722.11	722.40	721.96	720.93	720.38	720.15	720.40
17+00	17+50	18+00	18+50	19+00	19+50	20+00	20+50	21+00	21+50	22+00	22+50

WILLET, HOFMANN & ASSOCIATES, INC.
 CONSULTING ENGINEERS
 809 East Second Street, Dixon, IL 61021
 Phone 815.284.3381 Fax 815.284.3388
 Design Firm # 184-00918
 www.willett-hofmann.com

USER NAME =	DESIGNED - SMG	REVISED -
FLUT SCALE =	DRAWN - SMG	REVISED -
FLUT DATE =	CHECKED - GS	REVISED -
	DATE - 1-9-09	REVISED -

CITY OF ROCKFORD
INDEPENDENCE AVENUE
OVER S. BRANCH OF KENT CREEK

Demolition Plan

F.A. RTE.	SECTION	COUNTY	TOTAL SHEETS	SHEET NO.
	98-00484-00-BR	WINNEBAGO	18	6
STA. 18+30	TO STA. 21+20	CONTRACT NO. 85453		
FED. ROAD DIST. NO. - ILLINOIS FED. AID PROJECT				