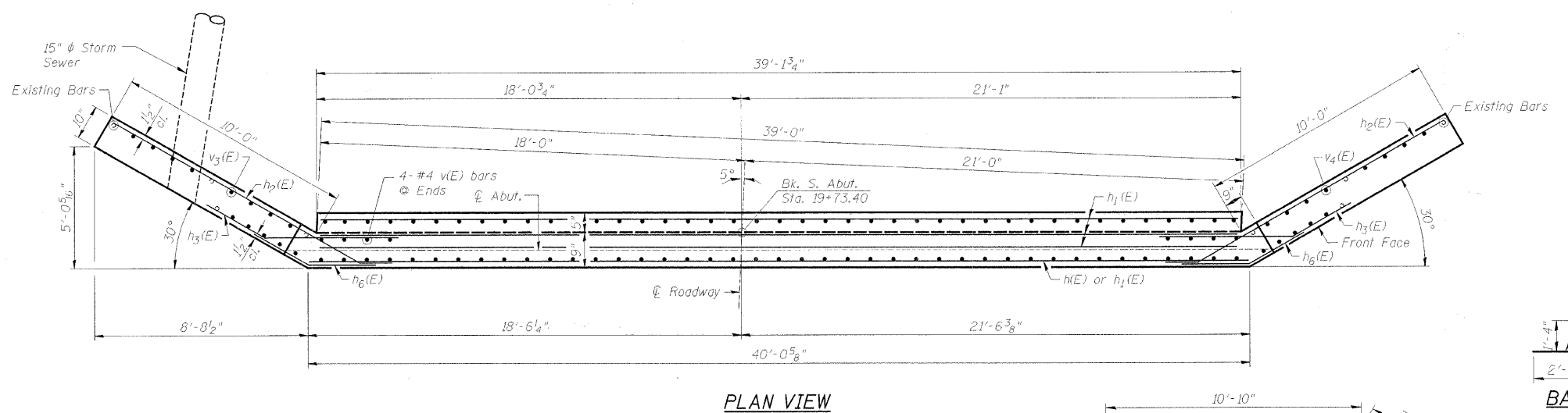
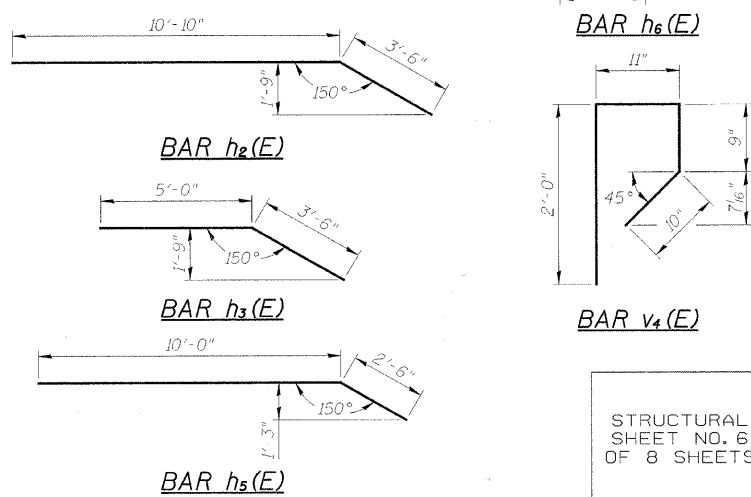


**BILL OF MATERIAL**

Bar	No.	Size	Length	Shape
h(E)	5	#5	39'-9"	—
h1(E)	5	#5	38'-10"	—
h2(E)	12	#8	14'-4"	—
h3(E)	14	#8	8'-6"	—
h4(E)	4	#5	10'-0"	—
h5(E)	4	#5	12'-6"	—
h6(E)	12	#5	5'-6"	—
h8(E)	16	#6	5'-0"	—
v(E)	48	#4	4'-7"	—
v1(E)	40	#4	4'-6"	P
v2(E)	40	#5	2'-0"	—
v5(E)	13	#4	7'-0"	—
v6(E)	13	#4	7'-3"	—
Porous Granular Embankment				Cu. Yd. 20
Concrete Removal				Cu. Yd. 12.6
Structure Excavation				Cu. Yd. 30
Concrete Structures				Cu. Yd. 10.3
Reinforcement Bars				Pound 1,950



MIN. BAR LAPS	
BAR	LAP
#4	1'-8"
#5	2'-2"
#6	2'-7"
#7	3'-5"
#8	4'-6"



**NOTES:**  
 Wing Reinforcement Shown Is Typical, Unless Shown Otherwise.  
 All Exposed Edges Shall Have Standard 3/4" Chamfers, Except As Noted.  
 Hatched Portion Of Wingwalls To Be Poured With Superstructure.  
 Backfill shall be placed behind the abutment after the superstructure has been poured and falsework removed. See Article 502.10 of the Standard Specifications.  
 Existing reinforcement shall be cleaned and incorporated into the new construction. Cost included with Concrete Removal.

**SOUTH ABUTMENT DETAILS**  
 INDEPENDENCE AVE. OVER S. BR. OF KENT CK.  
 STA. 20+00 (S.N. 101-6125)  
 SECTION 98-00484-00-BR  
 CITY OF ROCKFORD  
 WINNEBAGO COUNTY  
 WHA # 1038R08

STRUCTURAL SHEET NO. 6 OF 8 SHEETS	M.S. RTE.	SECTION	COUNTY	TOTAL SHEETS	SHEET NO.
	6548B	98-00484-00-BR	WINNEBAGO	18	13
	CONTRACT NO. 85453				
FED. ROAD DIST. NO.		ILLINOIS	FED. AID PROJECT	BHM-5099(50)	