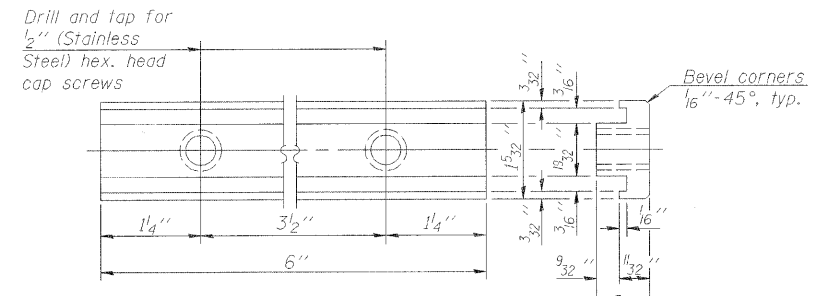


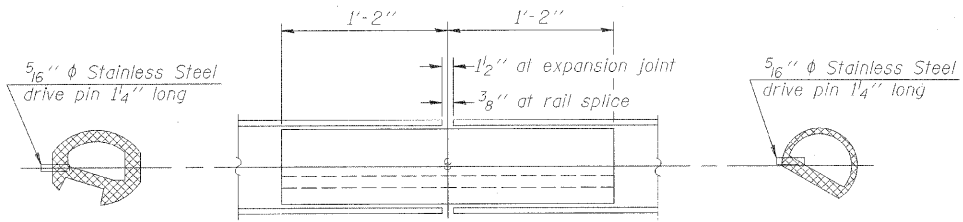
SECTION A-A

VIEW B-B RAIL POST DETAILS

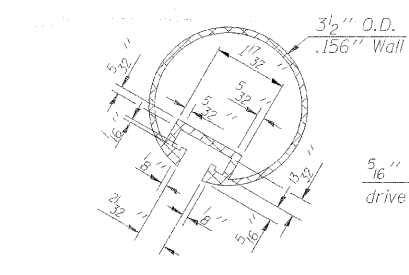


RAIL POST CLAMP BAR

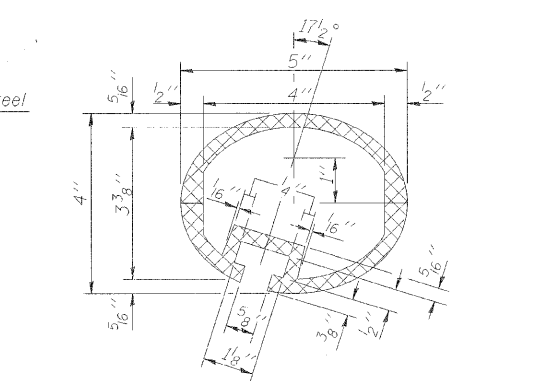
For Top Rail



RAIL SPLICE



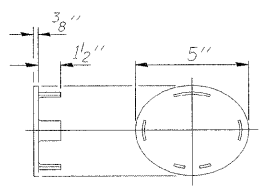
SECTION THRU TOP RAIL



SEC. THRU ELLIPTICAL RAIL SECTION

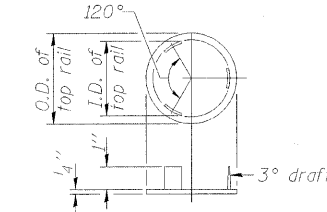
\*In lieu of the cast-in-place anchor device shown, the Contractor has the option of drilling and setting stainless steel anchor rods of the same diameter and grade as the specified cap screws according to Article 509.06 of the Standard Specifications. Embedment shall be according to the manufacturer's specifications.

\*\* Existing Railing to be removed and re-used.



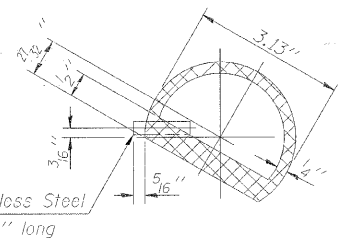
CAST END CAP

For bottom rail DRIVE FIT TYPE



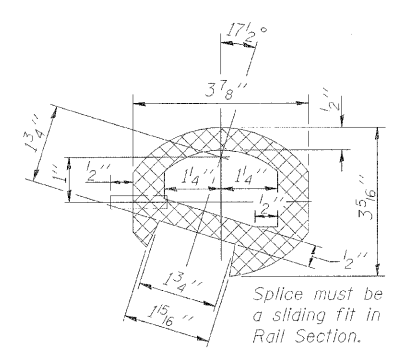
CAST END CAP

For Top rail



SECTION THRU SPLICE

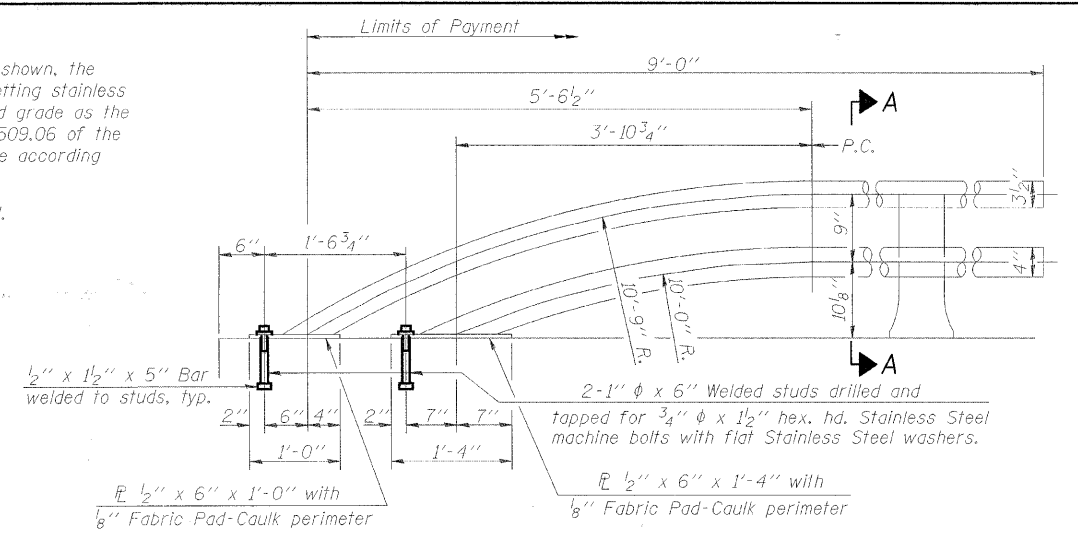
For Top Rail



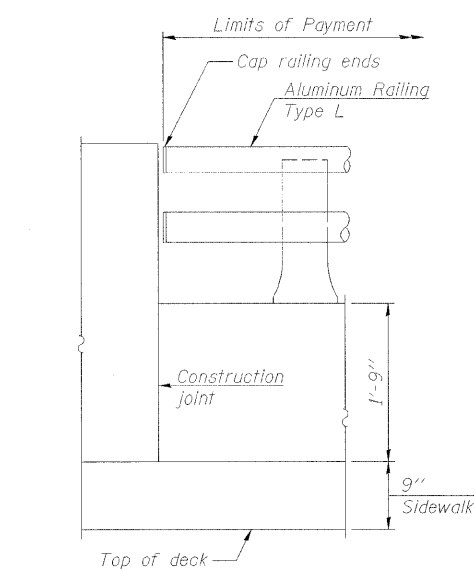
SEC. THRU SPLICE

Notes:

- All Posts shall be normal to parapet.
- All joints in rail shall be spliced per detail.
- All exposed rail ends shall be capped per detail.
- Provide 1-1/8 inch and 2-1/8 inch Aluminum Shims for 25% of the Posts. Rail elements shall be parallel to Grade-high spots will be ground and low spots shimmed.
- See Structural Sheet 4 of 8 for rail post spacing.



RAIL TERMINAL SECTION



RAIL END TREATMENT FOR TYPE 5 AND 6 TERMINAL

Note: The end rail post shall be set back as required for the terminal rail section.

BILL OF MATERIAL

Item	Unit	Quantity
Removing and Re-Erecting Existing Railing	Foot	52

Cost of anchorage devices, bolts, & washers included in Removing and Re-Erecting Existing Railing.

ALUMINUM RAILING, TYPE L DETAILS SHEET  
INDEPENDENCE AVE. OVER S. BR. OF KENT CK.  
STA. 20+00 (S.N. 101-6125)  
SECTION 98-00484-00-BR  
CITY OF ROCKFORD  
WINNEBAGO COUNTY  
WHA # 1038R08

STRUCTURAL SHEET NO. 8 OF 8 SHEETS	M.S. RTE.	SECTION	COUNTY	TOTAL SHEETS	SHEET NO.
	6548B	98-00484-00-BR	WINNEBAGO	18	15
CONTRACT NO. 85453					
FED. ROAD DIST. NO.		ILLINOIS FED. AID PROJECT		BHM-5099(50)	