

**STATE OF ILLINOIS**  
**DEPARTMENT OF TRANSPORTATION**  
**DIVISION OF HIGHWAYS**

**PROPOSED LOCAL AGENCY IMPROVEMENT**  
**FEDERAL-AID HBP PROJECT**  
**HIGHWAY BRIDGE PROGRAM**

**INDEX OF SHEETS**

- 1 = COVER SHEET
- 2 = SUMMARY OF QUANTITIES
- 3-4 = SCHEDULES
- 5 = GENERAL NOTES & TYPICAL SECTIONS
- 6 = DEMOLITION PLAN
- 7 = PLAN & PROFILE
- 8 = GENERAL PLAN & ELEVATION
- 9 = RIPRAP LAYOUT
- 10 = SUPERSTRUCTURE
- 11 = SUPERSTRUCTURE DETAILS
- 12 = NORTH ABUTMENT DETAILS
- 13 = SOUTH ABUTMENT DETAILS
- 14 = PIER #1 & #2 DETAILS
- 15 = ALUMINUM RAILING, TYPE L DETAILS
- 16-17 = CROSS SECTIONS
- 18 = INLET SPECIAL NO. 2 (MODIFIED) DETAIL

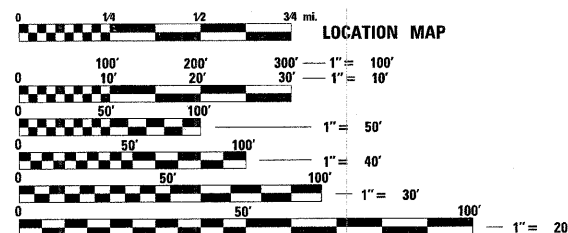
**STANDARDS**

- 000001-05 STANDARD SYMBOLS, ABBREVIATIONS & PATTERNS
- 001006 DECIMAL OF AN INCH AND OF A FOOT
- 280001-04 TEMPORARY EROSION CONTROL SYSTEMS
- 420001-07 PAVEMENT JOINTS
- 420101-04 24' (7.2m) JOINTED PCC PAVEMENT
- 424001-05 CURB RAMPS FOR SIDEWALKS
- 515001-03 NAME PLATE FOR BRIDGES
- 606001-04 CONCRETE CURB TYPE B AND COMBINATION CONCRETE CURB AND GUTTER
- 630001-08 STEEL PLATE BEAM GUARDRAIL
- 631031-07 TRAFFIC BARRIER TERMINAL, TYPE 6
- 664001-02 CHAIN LINK FENCE
- 701006-03 OFF-ROAD OPERATIONS, 2L, 2W, 15' (4.5 m) TO 24" (600 mm) FROM PAVEMENT EDGE
- 701301-03 LANE CLOSURE, 2L, 2W, SHORT TIME OPERATIONS
- 701901-01 TRAFFIC CONTROL DEVICES
- 720011-01 METAL POSTS FOR SIGNS, MARKERS & DELINEATORS
- 728001-01 TELESCOPING STEEL SIGN SUPPORT
- 729001-01 APPLICATIONS OF TYPES A & B METAL POSTS (FOR SIGNS & MARKERS)
- B. L. R. 22-6 TYPICAL APPLICATION OF TRAFFIC CONTROL DEVICES FOR CONSTRUCTION ON RURAL LOCAL HIGHWAYS

**MUNICIPAL STREET 6548B**  
**SECTION 98-00484-00-BR**  
**INDEPENDENCE AVENUE OVER S. BRANCH OF KENT CREEK**  
**CITY OF ROCKFORD**  
**PROJECT NO. BHM-5099(50)**  
**JOB NO. C-92-091-99**

NAME AND ADDRESS OF UTILITIES	TYPE
City of Rockford Attn: Jeff Rostamo 425 East State Street Rockford, Illinois 61104 (815) 987-5570	TELEPHONE
Comcast Attn: Mr. Mike Owens 4150 Kishwaukee Street Rockford, Illinois 61109 (815) 395-8977	CABLE & TELEPHONE
ComEd Attn: Mr. Tom Stutzman (630) 526-7094	ELECTRIC
Nicor Attn: Mr. Mike Lenox 123 Energy Avenue Rockford, Illinois 61109-1099 (815) 490-2869	GAS
Rock River Water Reclamation Attn: Mr. Mike Weber P.O. Box 7450 Rockford, Illinois 61126 (815) 387-7678	WATERWATER TREATMENT

STATE OF ILLINOIS DEPARTMENT OF TRANSPORTATION DIVISION OF HIGHWAYS	
APPROVED	<u>FEBRUARY 3</u> 2009 <i>John J. ... P.E.</i> CITY OF ROCKFORD, CITY ENGINEER
PASSED	<u>FEBRUARY 18</u> 2009 <i>John T. ...</i> DISTRICT 2 ENGINEER OF LOCAL ROADS & STREETS
RELEASING FOR BID BASED ON LIMITED REVIEW	<u>FEBRUARY 18</u> 2009 <i>James F. ...</i> DEPUTY DIRECTOR OF HIGHWAYS, REGION 2 ENGINEER

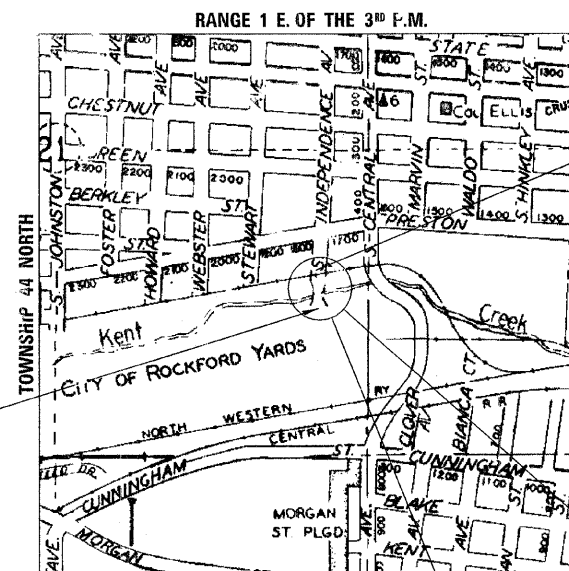


FULL SIZE PLANS HAVE BEEN PREPARED USING STANDARD ENGINEERING SCALES. REDUCED SIZED PLANS WILL NOT CONFORM TO STANDARD SCALES. IN MAKING MEASUREMENTS ON REDUCED PLANS, THE ABOVE SCALES MAY BE USED.

J.U.L.I.E.  
JOINT UTILITY LOCATION INFORMATION FOR EXCAVATION  
1-800-892-0123  
OR 811



**CONTRACT NO. 85453**



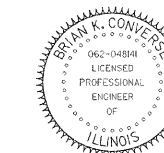
**SECTION BEGINS  
STA. 18 + 30**

**SECTION ENDS  
STA. 21 + 20**

LOCATION MAP

NET LENGTH 290 FEET = 0.05 MILES

**SECTION 98-00484-00-BR**  
A THREE SPAN (12'-9 3/4" : 26'-10 1/4" : 12'-9 3/4")  
13" REINFORCED CONCRETE SLAB ON  
REINFORCED CONCRETE PIERS &  
ABUTMENTS @ STA. 20+00. SKEW 5°  
RT. AHEAD.



*Brian K. Converse*  
DATE: 2/5/2009  
EXPIRES 11/30/09



809 East Second Street Dixon, Illinois 61021  
Phone 815.284.3381 Fax 815.284.3385  
Design Firm #184-000918  
www.willett-hofmann.com

**SUMMARY OF QUANTITIES**

CODE NO.	ITEM	UNIT	QUANTITY
20200410*	Earth Excavation (Special)	Cu. Yd.	295
20201200*	Removal and Disposal of Unsuitable Material	Cu. Yd.	150
20300100	Channel Excavation	Cu. Yd.	96
20700220	Porous Granular Embankment	Cu. Yd.	39
20800150*	Trench Backfill	Cu. Yd.	12
25000900*	Seeding, Class 1 (Special)	Acre	0.28
25100635	Heavy Duty Erosion Control Blanket	Sq. Yd.	603
28000400	Perimeter Erosion Barrier	Foot	535
28000500	Inlet and Pipe Protection	Each	4
28100109	Stone Riprap, Class A5	Sq. Yd.	57
28200200	Filter Fabric	Sq. Yd.	57
35100100	Aggregate Base Course, Type A	Ton	201
42000301*	Portland Cement Concrete Pavement 8" (Jointed)	Sq. Yd.	729
42001300	Protective Coat	Sq. Yd.	1,349
42300710*	Portland Cement Concrete Driveway Pavement, 6 inch, Special	Sq. Yd.	460
42400420*	Portland Cement Concrete Sidewalk 4 inch, Special	Sq. Ft.	487
50101500	Removal of Existing Superstructure	Each	1
50102400	Concrete Removal	Cu. Yd.	39.8
50200100	Structure Excavation	Cu. Yd.	59
50300225	Concrete Structures	Cu. Yd.	34.4
50300255	Concrete Superstructure	Cu. Yd.	107.5
50300260	Bridge Deck Grooving	Sq. Yd.	174
50300300	Protective Coat	Sq. Yd.	258
50800205	Reinforcement Bars, Epoxy Coated	Pound	27,570
Δ 50900905*	Removing and Re-Erecting Existing Railing	Foot	52
51500100	Name Plates	Each	1
550A0070*	Storm Sewers, Class A, Type 1 15"	Foot	34
550A0360*	Storm Sewers, Class A, Type 2 15"	Foot	130
550A0410*	Storm Sewers, Class A, Type 2 24"	Foot	24
55100700	Storm Sewer Removal 15"	Foot	127
55101200	Storm Sewer Removal 24"	Foot	25
60242600*	Inlets, Special, No. 2	Each	2
60500060	Removing Inlets	Each	2
60610100*	Combination Concrete Curb and Gutter, Type M-6.18 (Modified)	Foot	474
Δ 63100215*	Traffic Barrier Terminal, Type 6 (Special)	Each	1
63200310	Guardrail Removal	Foot	38
66410400*	Chain Link Fence to be Removed and Re-Erected	Foot	125
67100100	Mobilization	L. Sum	1
70101700*	Traffic Control and Protection	L. Sum	1
X0321556*	Sanitary Manholes to be Adjusted	Each	2
Z0005400*	Breaker-Run Crushed Stone	Ton	150

\* Special Provisions  
 Δ Specialty Items

CONSTRUCTION TYPE CODE X081-2A

PLAN	DATE
NO.	BY
NO.	DATE
NO.	BY
NO.	DATE
NO.	BY

PROFILE	DATE
NO.	BY
NO.	DATE
NO.	BY
NO.	DATE
NO.	BY

FILE NAME = s:\Struct\10338000\IndpendenceAvenue\Drawings\1038\_SummOfQuantities.dwg



**WILLETT, HOFMANN & ASSOCIATES, INC.**  
**CONSULTING ENGINEERS**  
 809 East Second Street, Dixon, IL 61021  
 Phone 815.284.3381 Fax 815.284.3385  
 Design Firm # 184-00918  
 www.willett-hofmann.com

USER NAME =	DESIGNED - MAS	REVISED -
	DRAWN - FDL	REVISED -
PLOT SCALE =	CHECKED - BKC	REVISED -
PLOT DATE =	DATE - 1-8-09	REVISED -

**CITY OF ROCKFORD**  
**INDEPENDENCE AVENUE**  
**OVER S. BRANCH OF KENT CREEK**

**Summary Of Quantities**

F.A. RTE.	SECTION	COUNTY	TOTAL SHEETS	SHEET NO.
	98-00484-00-BR	WINNEBAGO	18	2
STA.	TO STA.	CONTRACT NO. 85453		
FED. ROAD DIST. NO. - ILLINOIS FED. AID PROJECT				

# SCHEDULES

PLAN  
 REVISIONS  
 CHECKED  
 DATE  
 NO.  
 FILE NAME

PROFILE  
 REVISIONS  
 CHECKED  
 DATE  
 NO.  
 FILE NAME

FILE NAME = s:\Rockford\1038988\Independence\_Schedule.dwg

EARTHWORK SCHEDULE				
LOCATION	EARTH EXCAVATION (SPECIAL)	EARTH EXCAVATION ADJUSTED FOR SHRINKAGE 25%	EMBANKMENT	EARTHWORK BALANCE WASTE (+) OR SHORTAGE (-)
INDEPENDENCE AVE STA. 799+58.00 TO 813+21.00	85	64	30	34
STA. 799+58.00 TO 813+21.00	210	0	0	210
TOTALS	295	64	30	244

\*EARTH EXCAVATION (SPECIAL) INCLUDES THE FOLLOWING ITEMS: (ITEMS TO BE REMOVED AS INDICATED BY CROSS-HATCHING ON PLAN AND PROFILE SHEETS)

EXISTING PAVEMENT & CURB (8" ESTIMATE) 184 CU. YD.  
 EXISTING DRIVEWAY (6" ESTIMATE) 17 CU. YD.  
 EXISTING SIDEWALK (4" ESTIMATE) 9 CU. YD.  
 210 CU. YD. \*

20200410\*

REMOVAL AND DISPOSAL OF UNSUITABLE MATERIAL		
STATION	CU YD	REMARKS
INDEPENDENCE AVE.		
CONTINGENCY ITEM	150	AS DIRECTED BY ENGINEER
PROJECT TOTAL	150	

20201200\*

CHANNEL EXCAVATION		
STATION	CU YD	REMARKS
INDEPENDENCE AVE.		
ENTIRE PROJECT	96	
PROJECT TOTAL	96	

20300100

TRENCH BACKFILL		
STATION	CU YD	REMARKS
INDEPENDENCE AVE.		
18+44	4	
19+03 TO 19+36	8	
PROJECT TOTAL	12	

20800150

SEEDING, CLASS 1 (SPECIAL)		
STATION	ACRE	REMARKS
INDEPENDENCE AVE.		
ENTIRE PROJECT	0.28	
PROJECT TOTAL	0.28	

25000900\*

HEAVY DUTY EROSION CONTROL BLANKET		
STATION	SQ YD	REMARKS
INDEPENDENCE AVE.		
SOUTHEAST BANK OF CHANNEL	147	
NORTHEAST BANK OF CHANNEL	134	
SOUTHWEST BANK OF CHANNEL	149	
NORTHWEST BANK OF CHANNEL	173	
PROJECT TOTAL	603	

25100635

PERIMETER EROSION BARRIER		
STATION	FOOT	REMARKS
INDEPENDENCE AVE.		
LT. 18+30 TO 20+00	241	
RT. 18+30 TO 20+00	102	
LT. 20+00 TO 21+20	82	
RT. 20+00 TO 21+20	110	
PROJECT TOTAL	535	

28000400

INLET AND PIPE PROTECTION		
STATION	EACH	REMARKS
INDEPENDENCE AVE.		
18' LT. 18+44	1	
12' RT. 18+44	1	
16' LT. 21+95	1	
15' RT. 21+95	1	
PROJECT TOTAL	4	

28000500

STONE RIPRAP, CLASS A5		
STATION	SQ YD	REMARKS
INDEPENDENCE AVE.		
RT. 19+72 TO 20+33	57	
PROJECT TOTAL	57	

28100109

FILTER FABRIC		
STATION	SQ YD	REMARKS
INDEPENDENCE AVE.		
RT. 19+72 TO 20+33	57	
PROJECT TOTAL	57	

28200200

AGGREGATE BASE COURSE, TYPE A		
STATION	TON	REMARKS
INDEPENDENCE AVE.		
18+30 TO 19+74	121	4" - EXTENDS 1' BEYOND CURB
20+27 TO 21+20	80	4" - EXTENDS 1' BEYOND CURB
PROJECT TOTAL	201	

35100100

PORTLAND CEMENT CONCRETE PAVEMENT 8" (JOINTED)		
STATION	SQ YD	REMARKS
INDEPENDENCE AVE.		
18+30 TO 19+74	438	
20+27 TO 21+20	292	
PROJECT TOTAL	729	

42000301

PROTECTIVE COAT		
STATION	SQ YD	REMARKS
INDEPENDENCE AVE.		
18+20 TO 19+47	883	
20+27 TO 21+20	466	
PROJECT TOTAL	1349	

42001300

PORTLAND CEMENT CONCRETE DRIVEWAY PAVEMENT 6 INCH, SPECIAL		
STATION	SQ. YD.	REMARKS
INDEPENDENCE AVE.		
17' LT. 18+90	289	
15' RT. 19+20	65	
26' LT. 20+57	106	
PROJECT TOTAL	460	

42300710

PORTLAND CEMENT CONCRETE SIDEWALK 4 INCH, SPECIAL		
STATION	SQ FT	REMARKS
INDEPENDENCE AVE.		
LT. 19+26 TO 19+72	251	6' SIDEWALK
LT. 20+25 TO 21+00	236	6' SIDEWALK
PROJECT TOTAL	487	

42400400

STORM SEWERS, CLASS A, TYPE 1 15"		
STATION	FOOT	REMARKS
INDEPENDENCE AVE.		
18+44	34	
PROJECT TOTAL	34	

550A0070

STORM SEWERS, CLASS A, TYPE 2 15"		
STATION	FOOT	REMARKS
INDEPENDENCE AVE.		
RT. 18+44 TO 19+74	130	
PROJECT TOTAL	130	

550A0360

STORM SEWERS CLASS A, TYPE 2 24"		
STATION	FOOT	REMARKS
INDEPENDENCE AVE.		
RT. 20+27 TO 20+51	24	
PROJECT TOTAL	24	

550A0410

STORM SEWER REMOVAL 15"		
STATION	FOOT	REMARKS
INDEPENDENCE AVE.		
19+01 TO 19+74	127	
PROJECT TOTAL	127	

55100700

STORM SEWER REMOVAL 24"		
STATION	FOOT	REMARKS
INDEPENDENCE AVE.		
19.8' RT. 20+26 TO 20+51	25	
PROJECT TOTAL	25	

55101200

INLETS SPECIAL, NO. 2		
STATION	EACH	REMARKS
INDEPENDENCE AVE.		
18.1' LT. 18+44	1	
12.3' RT. 18+44	1	
PROJECT TOTAL	2	

60242600

REMOVING INLETS		
STATION	EACH	REMARKS
INDEPENDENCE AVE.		
14.5' RT. 19+01	1	
30' LT. 19+38	1	
PROJECT TOTAL	2	

60500060

COMBINATION CONCRETE CURB & GUTTER, TYPE M - 6.18 (MODIFIED)		
STATION	FOOT	REMARKS
INDEPENDENCE AVE.		
LT. 18+30 TO 19+72	142	
RT. 18+30 TO 19+75	145	
LT. 20+25 TO 21+20	95	
RT. 20+28 TO 21+20	92	
PROJECT TOTAL	474	

60610100\*

TRAFFIC BARRIER TERMINAL, TYPE 6 (SPECIAL)		
STATION	EACH	REMARKS
INDEPENDENCE AVE.		
RT. 19+44 TO 19+78	1	
PROJECT TOTAL	1	

63100215\*

# SCHEDULES

PLAN	REPORTED	DATE
NO.	BY	
	DESIGNED	
	PLOTTED	
	ALIGNED	
	CHECKED	
	DATE	
	CADD FILE NAME	

PROFILE	REPORTED	DATE
NO.	BY	
	DESIGNED	
	PLOTTED	
	ALIGNED	
	CHECKED	
	DATE	
	CADD FILE NAME	

GUARD RAIL REMOVAL		
STATION	FOOT	REMARKS
INDEPENDENCE AVE.		
RT. 19+37 TO 19+74	38	
PROJECT TOTAL	38	

CHAIN LINK FENCE TO BE REMOVED AND RE-ERECTED		
STATION	FOOT	REMARKS
INDEPENDENCE AVE.		
LT. 18+55 TO 19+71	125	
PROJECT TOTAL	125	

TRAFFIC CONTROL AND PROTECTION		
STATION	L SUM	REMARKS
INDEPENDENCE AVE.		
ENTIRE PROJECT	1	
PROJECT TOTAL	1	

SANITARY MANHOLES TO BE ADJUSTED		
STATION	EACH	REMARKS
INDEPENDENCE AVE.		
2' RT. 19+51	1	
1' LT. 20+56	1	
PROJECT TOTAL	2	

BREAKER-RUN CRUSHED STONE		
STATION	TON	REMARKS
INDEPENDENCE AVE.		
CONTINGENCY ITEM	150	AS DIRECTED BY ENGINEER
PROJECT TOTAL	150	

FILE NAME = s:\rock\proj\103PR08-Independence\SSchedule.dgn

**WILLET, HOFMANN & ASSOCIATES, INC.**  
**CONSULTING ENGINEERS**  
 809 East Second Street Dixon, IL 61021  
 Phone 815.294.3381 Fax 815.294.3385  
 Design Firm # 184-00918  
 www.willett-hofmann.com

USER NAME =	DESIGNED -	REVISED -
	DRAWN -	REVISED -
PLOT SCALE =	CHECKED -	REVISED -
PLOT DATE =	DATE -	REVISED -

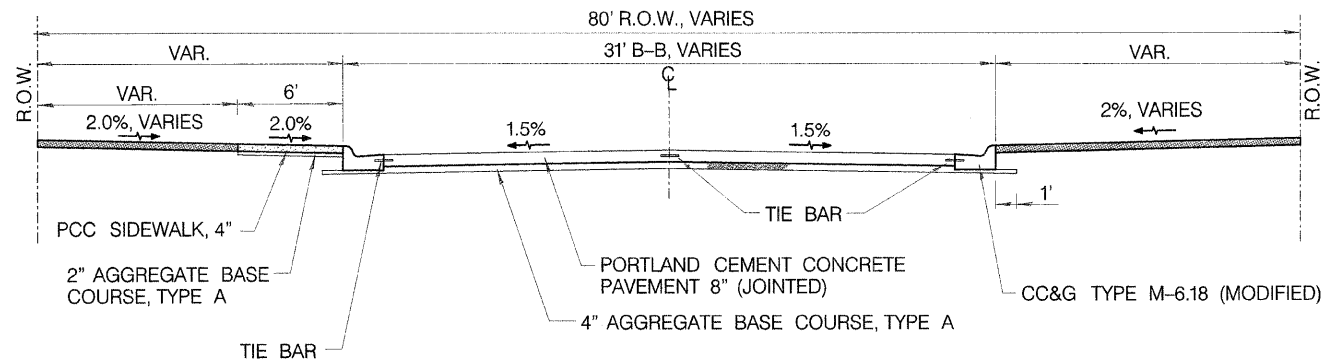
**CITY OF ROCKFORD**  
**INDEPENDENCE AVENUE**  
**OVER S. BRANCH OF KENT CREEK**

**Schedules**

F.A. RTE.	SECTION	COUNTY	TOTAL SHEETS	SHEET NO.
	98-00484-00-BR	WINNEBAGO	18	4
STA.	TO STA.	CONTRACT NO. 85453		
FED. ROAD DIST. NO. - ILLINOIS FED. AID PROJECT				

PLAN	SUBMITTED	DATE
	PLOTTED	
	ALIGNMENT CHECKED	
	GRADES CHECKED	
	PAID FILE NAME	
	NO.	

PROFILE	DESIGNED	DATE
	PLOTTED	
	GRADES CHECKED	
	STRUCTURE NOTATIONS CHECKED	
	NO.	



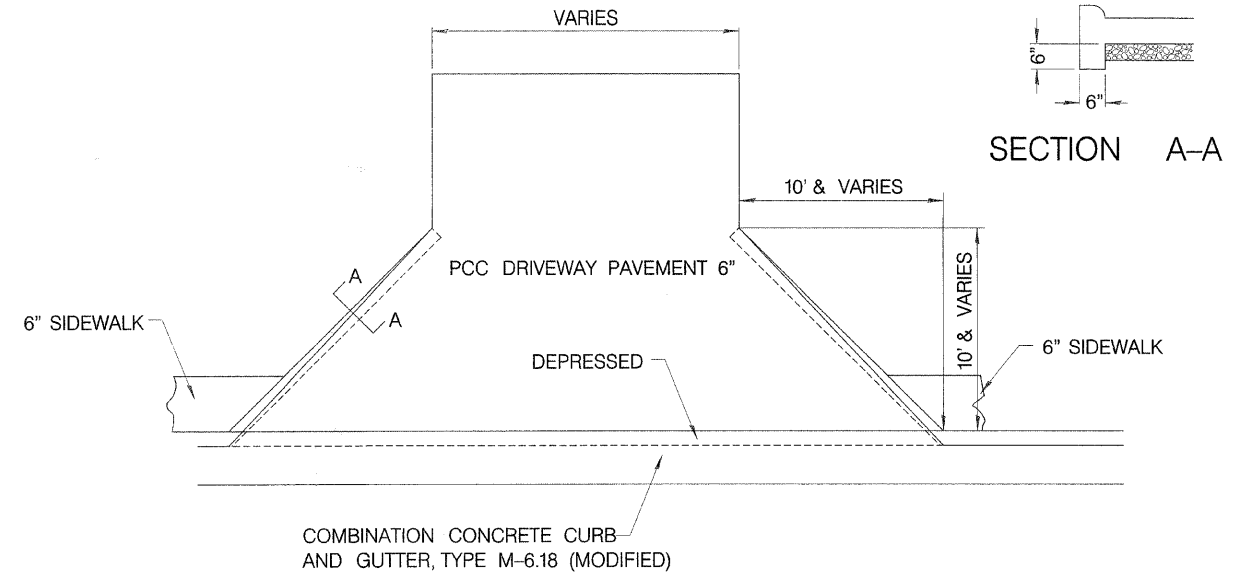
STA. 18+30.00 TO 20+03.38  
STA. 20+26.64 TO 21+20.00  
INDEPENDENCE AVENUE

### PAVEMENT STRUCTURAL DESIGN

STRUCTURAL DESIGN TRAFFIC (S.D.T.) = YEAR 2018 P.V. 301  
CLASS IV STREET S.U. 31  
SOIL SUPPORT = FAIR M.U. 10  
80,000 # TRUCK DESIGN ADT 342

TF = 0.50 USE  
MEDIUM RELIABILITY PCC 8"  
12.5' TRANSVERSE JOINT SPACING SUBGRADE 4"  
THICKNESS 6.75"  
SUBGRADE 4"

NOTE: DUE TO POTENTIAL FOR INCREASE IN TRUCK TRAFFIC USE 8" PAVEMENT THICKNESS



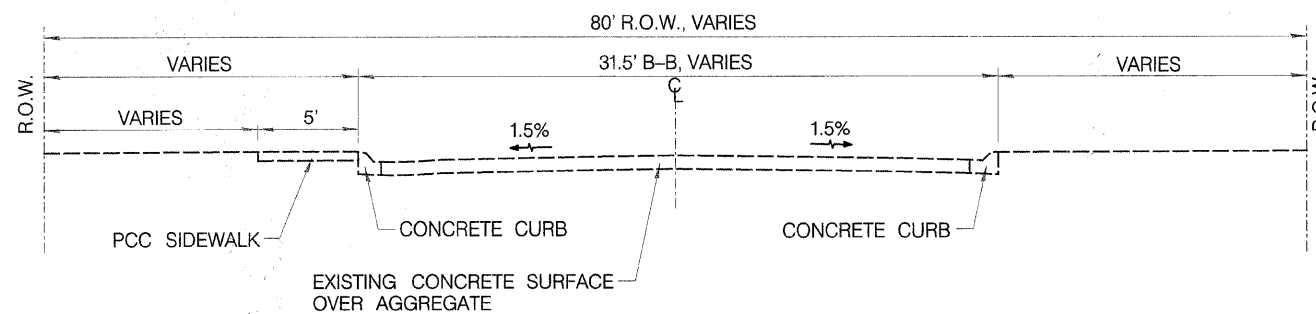
### ENTRANCE TYPICAL

### GENERAL NOTES

The Contractor shall adjust sanitary manholes in accordance with the specifications and the following Rock River Water Reclamation District manhole adjustment requirements:

1. A minimum of 4" adjusting rings (Adjusting rings not required in turf areas or curb & gutter roadways; if provided the minimum is 4".)
2. A maximum of 12" adjusting rings.
3. No more than one (1) 2-inch adjusting ring per manhole.
4. A maximum of 30" from the top of casting to the first step.
5. Manhole adjustment by grouting is not permitted.

All driveways scheduled for removal located behind the sidewalk shall be reconstructed with concrete.



### EXISTING TYPICAL CROSS-SECTION

FILE NAME = c:\rockford\1025008\indepave\1\pavestructure.dgn

**WILLET, HOFMANN & ASSOCIATES, INC.**  
CONSULTING ENGINEERS  
809 East Second Street, Dixon, IL 61021  
Phone 815.284.3381 Fax 815.284.3385  
Design Firm # 194-00918  
www.willett-hofmann.com

USER NAME =	DESIGNED - SMG	REVISED -
	DRAWN - SMG	REVISED -
PLOT SCALE =	CHECKED - GS	REVISED -
PLOT DATE =	DATE - 1-9-09	REVISED -

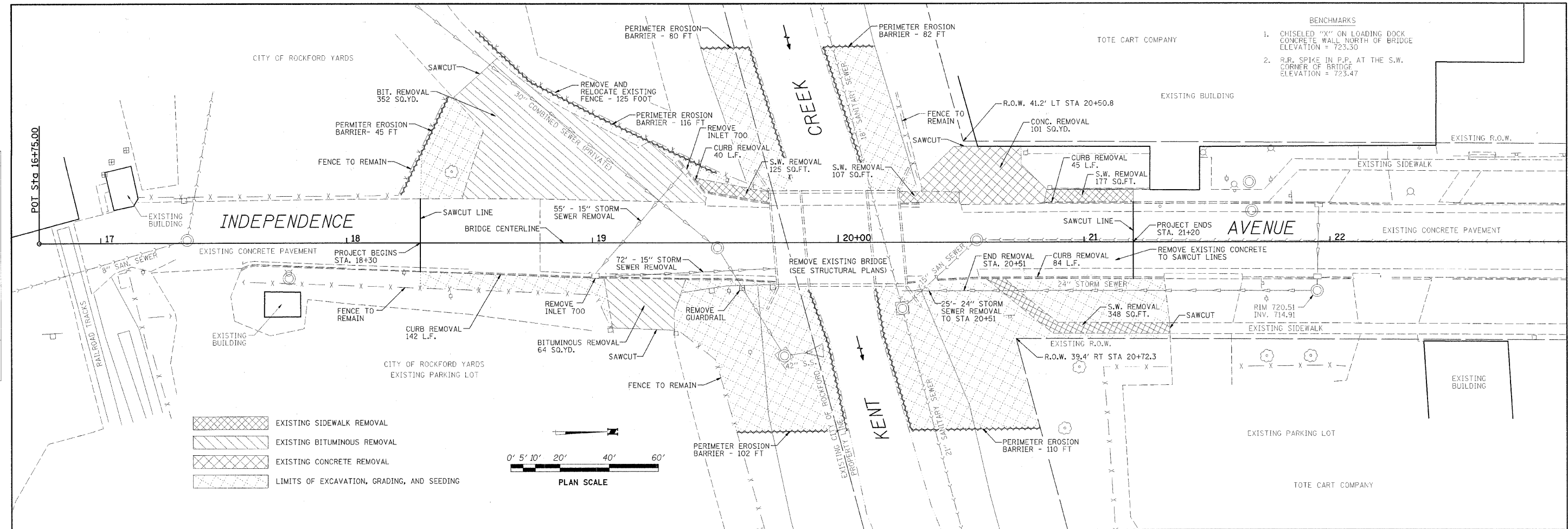
**CITY OF ROCKFORD**  
INDEPENDENCE AVENUE  
OVER S. BRANCH OF KENT CREEK

### General Notes & Typical Sections

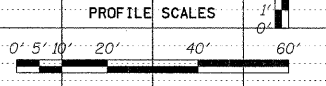
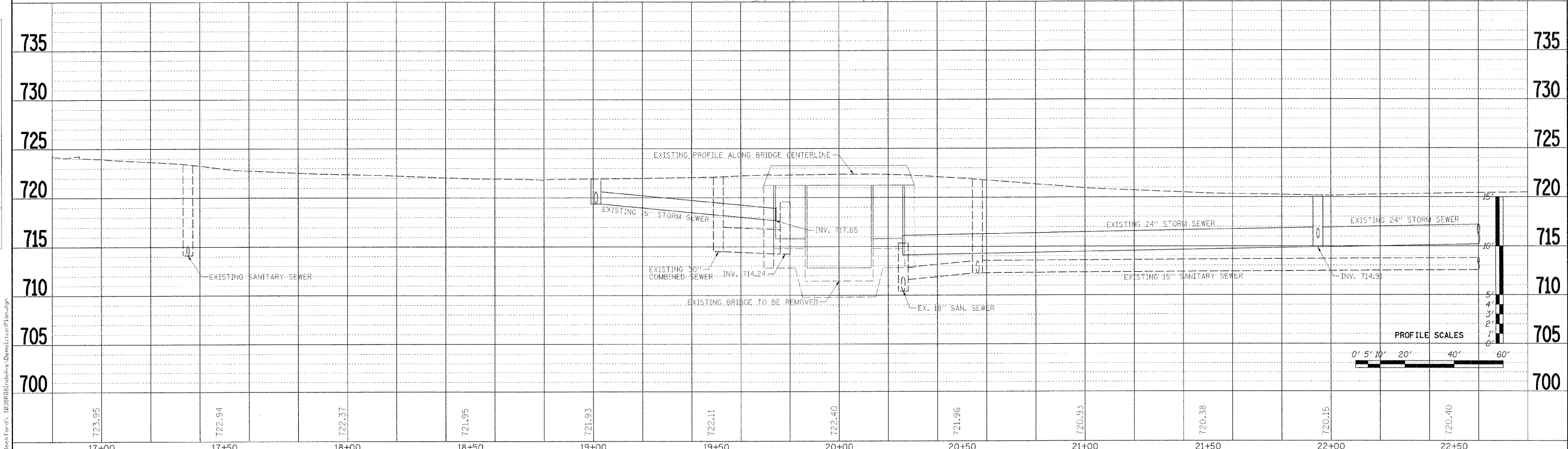
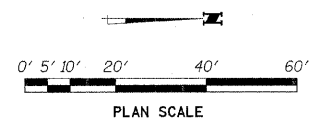
F.A. RTE.	SECTION	COUNTY	TOTAL SHEETS	SHEET NO.
	98-00484-00-BR	WINNEBAGO	18	5
STA.	TO STA.	CONTRACT NO. 85453		
FED. ROAD DIST. NO. - ILLINOIS FED. AID PROJECT				

PLAN	DESIGNED	BY	DATE
	CHECKED		
	PLOTTED		
	ALIGNED		
	FILED		
	NO. _____		
	DATE _____		

PROFILE	DESIGNED	BY	DATE
	CHECKED		
	PLOTTED		
	NO. _____		
	DATE _____		



- EXISTING SIDEWALK REMOVAL
- EXISTING BITUMINOUS REMOVAL
- EXISTING CONCRETE REMOVAL
- LIMITS OF EXCAVATION, GRADING, AND SEEDING



723.95	722.94	722.37	721.95	721.93	722.11	722.40	721.96	720.93	720.38	720.15	720.40
17+00	17+50	18+00	18+50	19+00	19+50	20+00	20+50	21+00	21+50	22+00	22+50

**WILLET, HOFMANN & ASSOCIATES, INC.**  
 CONSULTING ENGINEERS  
 809 East Second Street, Dixon, IL 61021  
 Phone 815.284.3381 Fax 815.284.3388  
 Design Firm # 184-00918  
 www.willett-hofmann.com

USER NAME =	DESIGNED - SMG	REVISED -
DESIGNED - SMG	DRAWN - SMG	REVISED -
CHECKED - GS	CHECKED - GS	REVISED -
DATE - 1-9-09	DATE - 1-9-09	REVISED -

**CITY OF ROCKFORD**  
**INDEPENDENCE AVENUE**  
**OVER S. BRANCH OF KENT CREEK**

**Demolition Plan**

F.A. RTE.	SECTION	COUNTY	TOTAL SHEETS	SHEET NO.
	98-00484-00-BR	WINNEBAGO	18	6
STA. 18+30	TO STA. 21+20	CONTRACT NO. 85453		
FED. ROAD DIST. NO. ILLINOIS FED. AID PROJECT				

DATE	BY

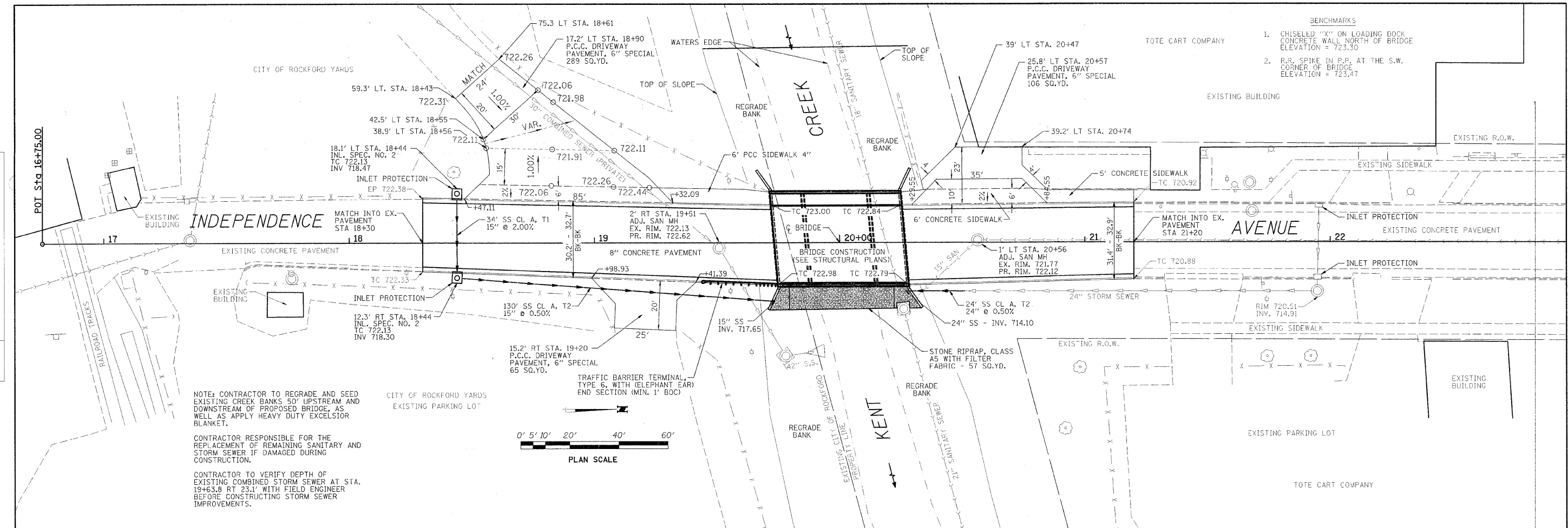
  

DATE	BY

DATE	BY

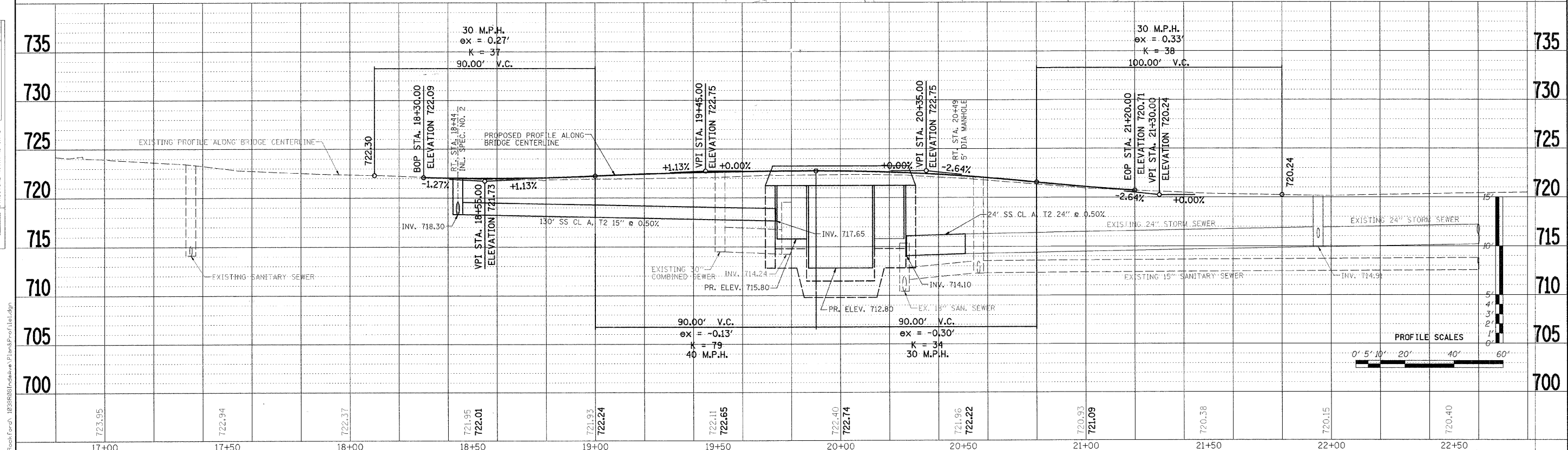
DATE	BY



NOTE: CONTRACTOR TO REGRADE AND SEED EXISTING CREEK BANKS 50' UPSTREAM AND DOWNSTREAM OF PROPOSED BRIDGE, AS WELL AS APPLY HEAVY DUTY EXCELSIOR BLANKET.

CONTRACTOR RESPONSIBLE FOR THE REPLACEMENT OF REMAINING SANITARY AND STORM SEWER IF DAMAGED DURING CONSTRUCTION.

CONTRACTOR TO VERIFY DEPTH OF EXISTING COMBINED STORM SEWER AT STA. 19+63.8 RT 23.1' WITH FIELD ENGINEER BEFORE CONSTRUCTING STORM SEWER IMPROVEMENTS.



**WILLET, HOFMANN & ASSOCIATES, INC.**  
**CONSULTING ENGINEERS**  
 889 West 2nd Street, Rockford, IL 61102  
 Phone 815-398-2221 Fax 815-398-3322  
 Design Firm #184-00918  
 www.willett-hofmann.com

USER NAME =	DESIGNED - SMG	REVISED -
PLOT SCALE =	DRAWN - SMG	REVISED -
PLOT DATE =	CHECKED - GS	REVISED -
	DATE - 1-9-2009	REVISED -

**CITY OF ROCKFORD**  
**INDEPENDENCE AVENUE**  
**OVER S. BRANCH OF KENT CREEK**

<b>Plan &amp; Profile</b>			
F.A. RTE.	SECTION	COUNTY	TOTAL SHEETS
	98-00484-00-BR	WINNEBAGO	18
STA. 18+30	TO STA. 21+20	CONTRACT NO.	85453
FED. ROAD DIST. NO. - ILLINOIS FED. AID PROJECT			

F.A. RTE.	SECTION	COUNTY	TOTAL SHEETS	SHEET NO.
	98-00484-00-BR	WINNEBAGO	18	7
STA. 18+30	TO STA. 21+20	CONTRACT NO.	85453	
FED. ROAD DIST. NO. - ILLINOIS FED. AID PROJECT				

FILE NAME: C:\Rockford\98-00484-00-BR\Plan&Profile.dwg

**EXISTING STRUCTURE:** S.N. 101-6125  
 A Three Span (12'-10":26'-9":12'-10") Precast Prestressed Concrete Deck Beam (11") Structure on Reinforced Concrete Piers & Abutments @ Sta. 20+00. Skew 5° Rt. Ahead. To be Rehabilitated.

**BENCH MARK:**  
 Chiseled "X" on loading dock concrete wall north of bridge  
 Elev. 723.30

**BENCH MARK:**  
 R.R. Spike in P.P. at the S.W. corner of bridge  
 Elev. 723.47

**BILL OF MATERIAL - BRIDGE**

ITEM	UNIT	SUB	SUPER	TOTAL
Channel Excavation	Cu. Yd.			96
Porous Granular Embankment	Cu. Yd.	39		39
Stone Riprap, Class A5	Sq. Yd.	57		57
Filter Fabric	Sq. Yd.	57		57
Removal of Existing Superstructure	Each			1
Concrete Removal	Cu. Yd.	39.8		39.8
Structure Excavation	Cu. Yd.	59		59
Concrete Structures	Cu. Yd.	34.4		34.4
Concrete Superstructure	Cu. Yd.		107.5	107.5
Bridge Deck Grooving	Sq. Yd.		174	174
Protective Coat	Sq. Yd.		258	258
Reinforcement Bars, Epoxy Coated	Pound	6,380	21,190	27,570
Remove and Re-erecting Existing Railing	Foot		52	52
Name Plates	Each		1	1

SOUTH BRANCH OF KENT CREEK  
 RE-BUILT 2009 BY  
 CITY OF ROCKFORD  
 SECTION 98-00484-00-BR  
 M.S. RT. 6548 STATION 20+00  
 STR. NO. 101-6125 LOADING HL-93

**NAME PLATE LETTERING**

Refer To Std. 515001  
 Existing Name Plate shall be cleaned and relocated next to New name plate.  
 Cost incidental with name plates.

**DESIGN SPECIFICATIONS**

2007 AASHTO LRFD Bridge Design Specifications with 2008 Interims

**DESIGN STRESSES**

**FIELD UNITS**  
 $f'_c = 3,500$  psi  
 $f_y = 60,000$  psi (Reinforcement)

**LOADING HL-93**

Allow 50#/#/sq. ft. for future wearing surface.

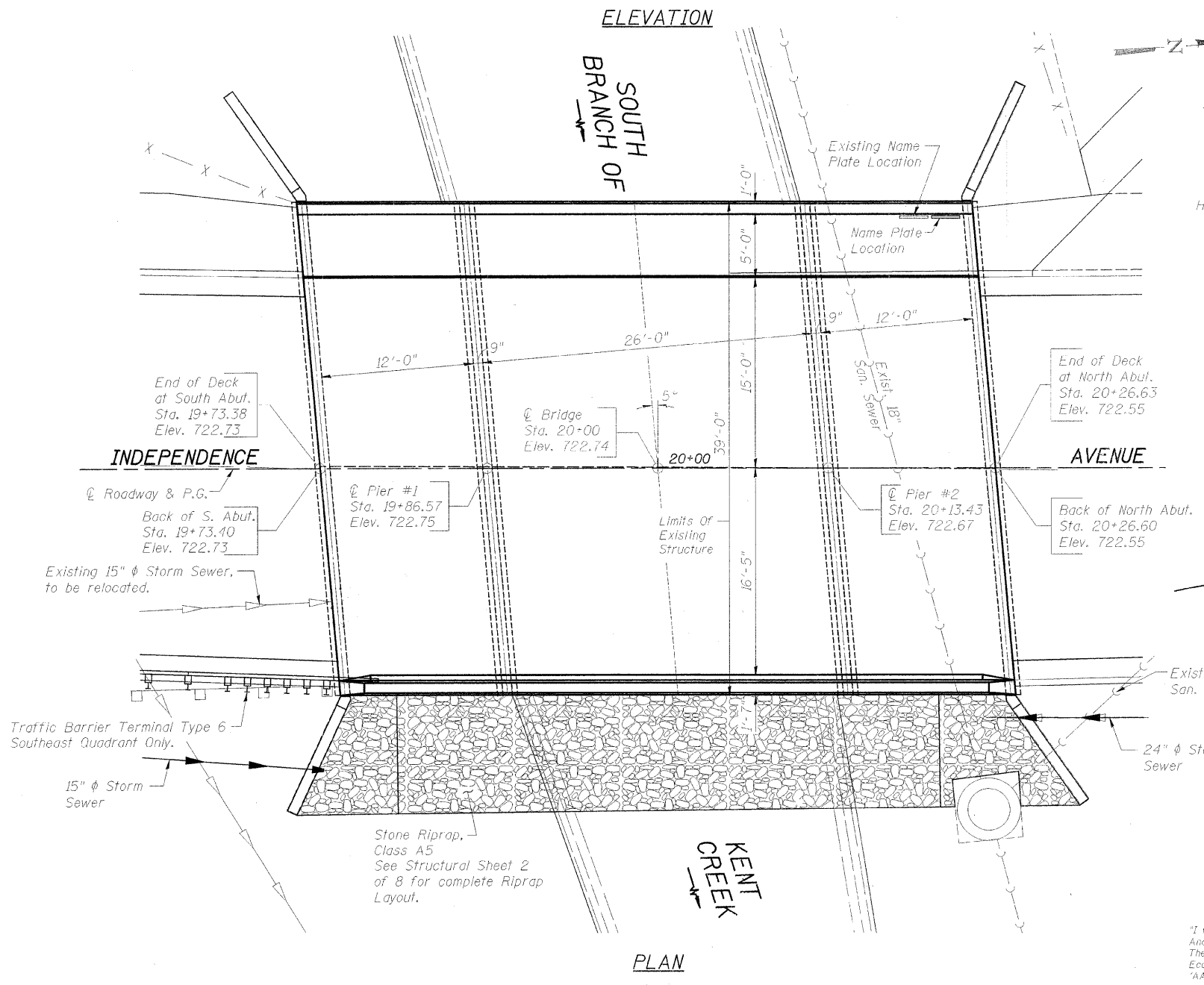
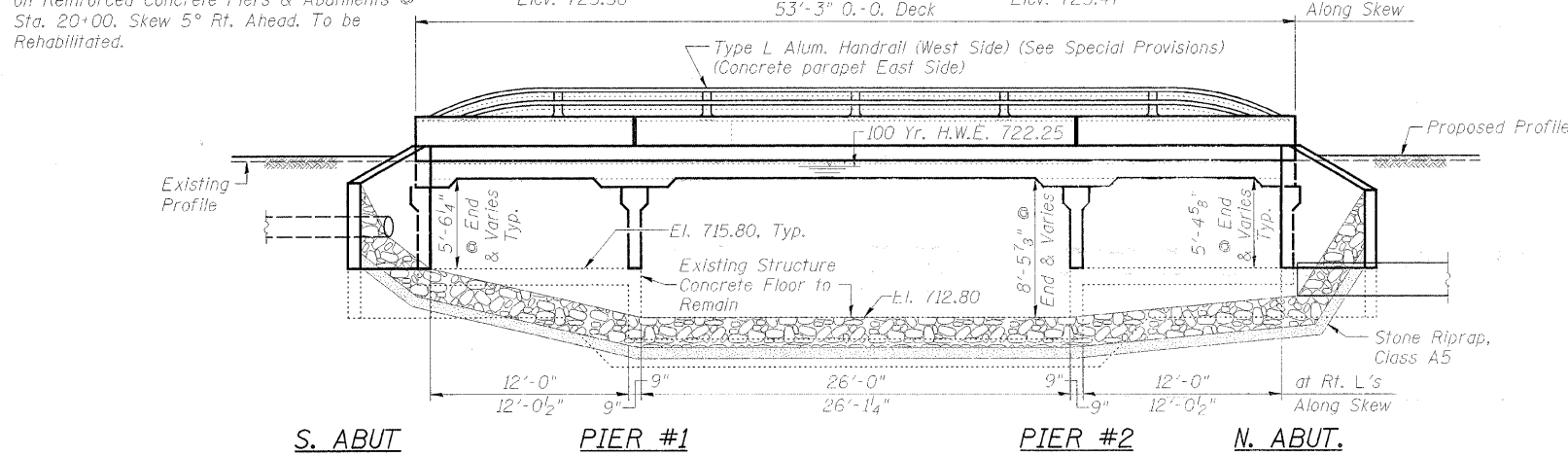
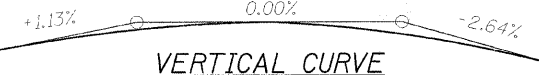
**SEISMIC DATA**

Seismic Performance Zone (SPZ) = 1  
 Horizontal Bedrock Acceleration Coefficient (A) = 0.04 g  
 Site Coefficient (S) = 1.0

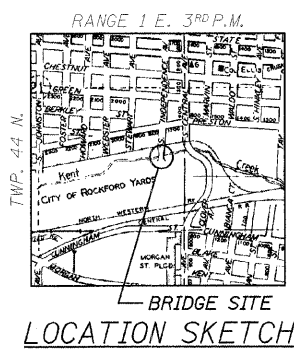
**WATERWAY INFORMATION**

Drainage Area ..... 14.03 Sq. Mi.  
 Design Discharge (30 Yr.) ..... 2,850 C.F.S.  
 Existing Opening ..... 351 Sq. Ft.  
 Required Opening ..... 351 Sq. Ft.  
 Proposed Opening ..... 351 Sq. Ft.  
 Created Head (30 Yr.) ..... 0.93'  
 100 Yr. Discharge ..... 3,501 C.F.S.  
 Created Head (100 Yr.) ..... 0.95'  
 High Water Elev. (100 Yr.) ..... 722.25 Ft.

P.I. Sta. 19+45 El. 722.75 V.C. = 90' K = 79  
 P.I. Sta. 20+35 El. 722.75 V.C. = 90' K = 34



Brian K. Converse  
 DATE: 2/5/2009  
 EXPIRES 11/30/10



"I Certify That To The Best Of My Knowledge, Information And Belief, This Bridge Design Is Structurally Adequate For The Design Loading Shown On The Plans, The Design Is An Economical One Complies With Requirements Of The Current 'AASHTO Standard Specifications For Highway Bridges'."

STRUCTURAL SHEET NO. 1 OF 8 SHEETS

M.S. RTE.	SECTION	COUNTY	TOTAL SHEETS	SHEET NO.
6548B	98-00484-00-BR	WINNEBAGO	18	8
CONTRACT NO. 85453				
FED. ROAD DIST. NO. - ILLINOIS FED. AID PROJECT BHM-5099(50)				

**GENERAL PLAN AND ELEVATION INDEPENDENCE AVE. OVER S. BR. OF KENT CK. STA. 20+00 (S.N. 101-6125) SECTION 98-00484-00-BR CITY OF ROCKFORD WINNEBAGO COUNTY**

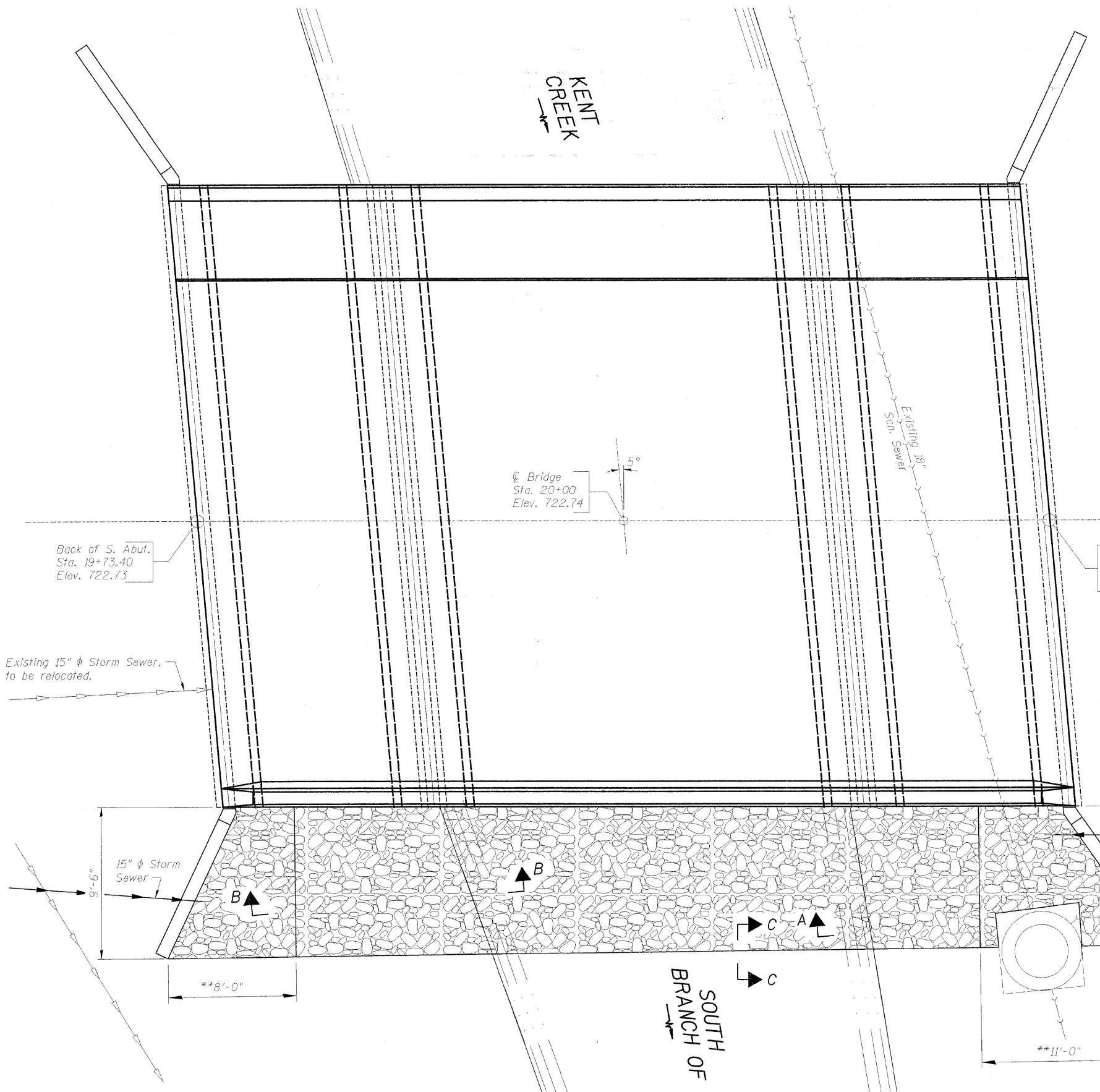
WHA JOB NUMBER 1038R08

**WILLET, HOFMANN & ASSOCIATES, INC. CONSULTING ENGINEERS**  
 Land Surveying - Transportation - Structural Environmental - Architecture  
 809 East Second Street Dixon, Illinois 61021  
 Phone 815.294.3381 Fax 815.294.3385  
 Design Firm #184-000918 www.willettthofmann.com

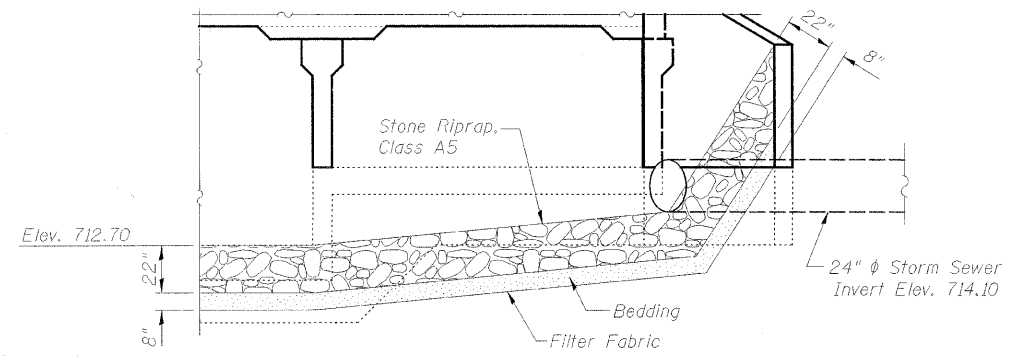
Designed By: D.D. Damhoff Date: 10/08  
 Checked By: B.K. Converse Date: 12/08  
 Drawn By: F. D. Lochal Date: 10/08



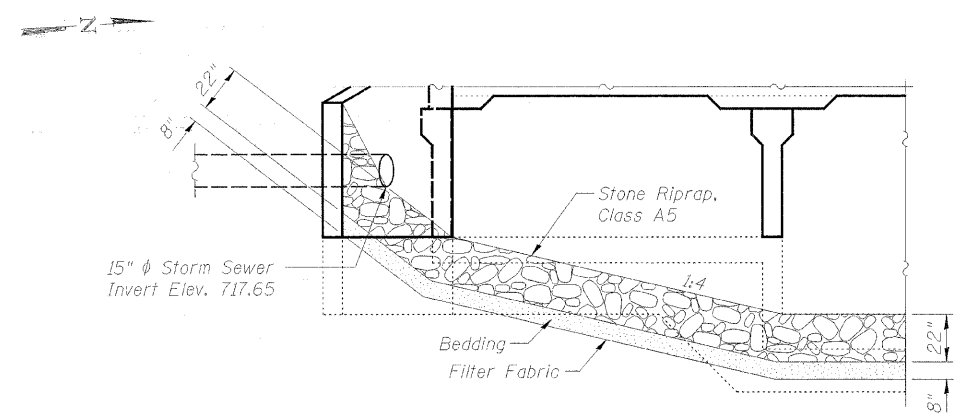
KENT  
CREEK



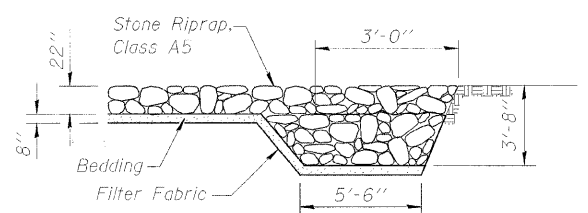
PLAN VIEW



SEC A-A



SEC B-B



SEC C-C

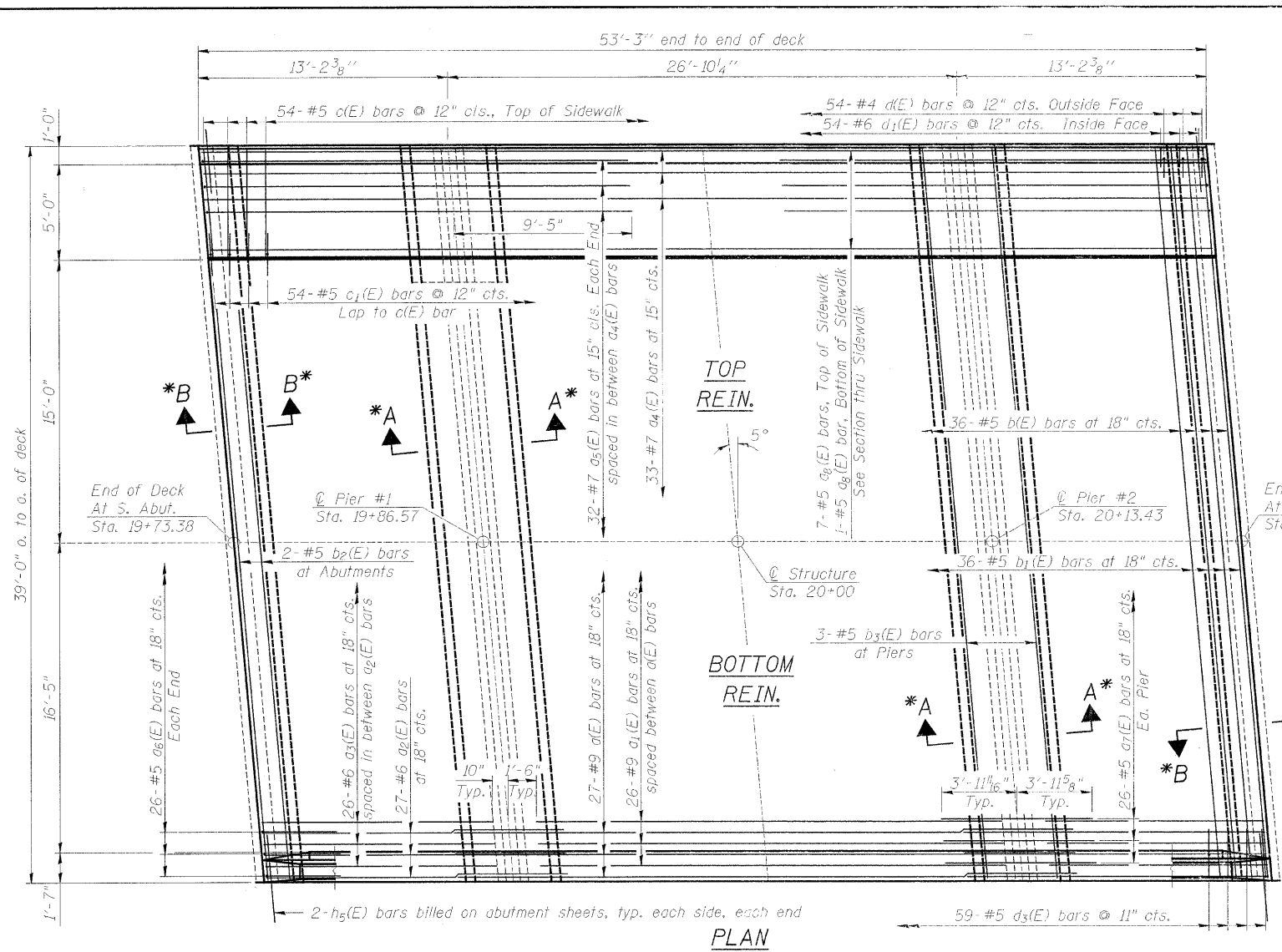
BILL OF MATERIAL

Item	Unit	Quantity
Stone Riprap, Class A5	Sq. Yd.	57
Filter Fabric	Sq. Yd.	57

RIPRAP LAYOUT  
INDEPENDENCE AVE. OVER S. BR. OF KENT CK.  
STA. 20+00 (S.N. 101-6125)  
SECTION 98-00484-00-BR  
CITY OF ROCKFORD  
WINNEBAGO COUNTY  
WHA # 1038R08

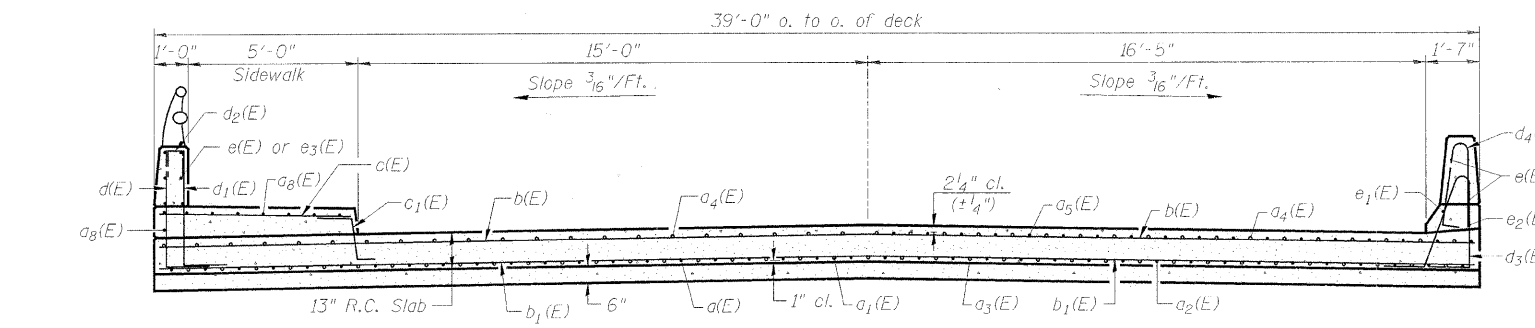
\*\* Pour concrete over riprap in this region using concrete from Section 503 of the Standard Specifications. Cost included in the contract unit price per Sq. Yd. for Stone Riprap, Class A5.

STRUCTURAL SHEET NO. 2 OF 8 SHEETS	M.S. RTE.	SECTION	COUNTY	TOTAL SHEETS	SHEET NO.
	6548B	98-00484-00-BR	WINNEBAGO	18	9
	CONTRACT NO. 85453				
FED. ROAD DIST. NO.		ILLINOIS	FED. AID PROJECT BHM-5099(50)		

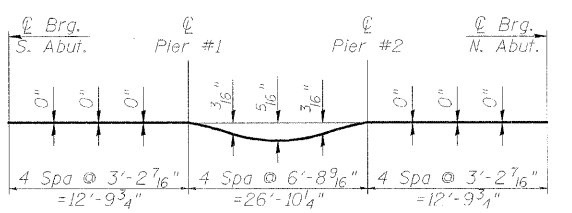


**PLAN**

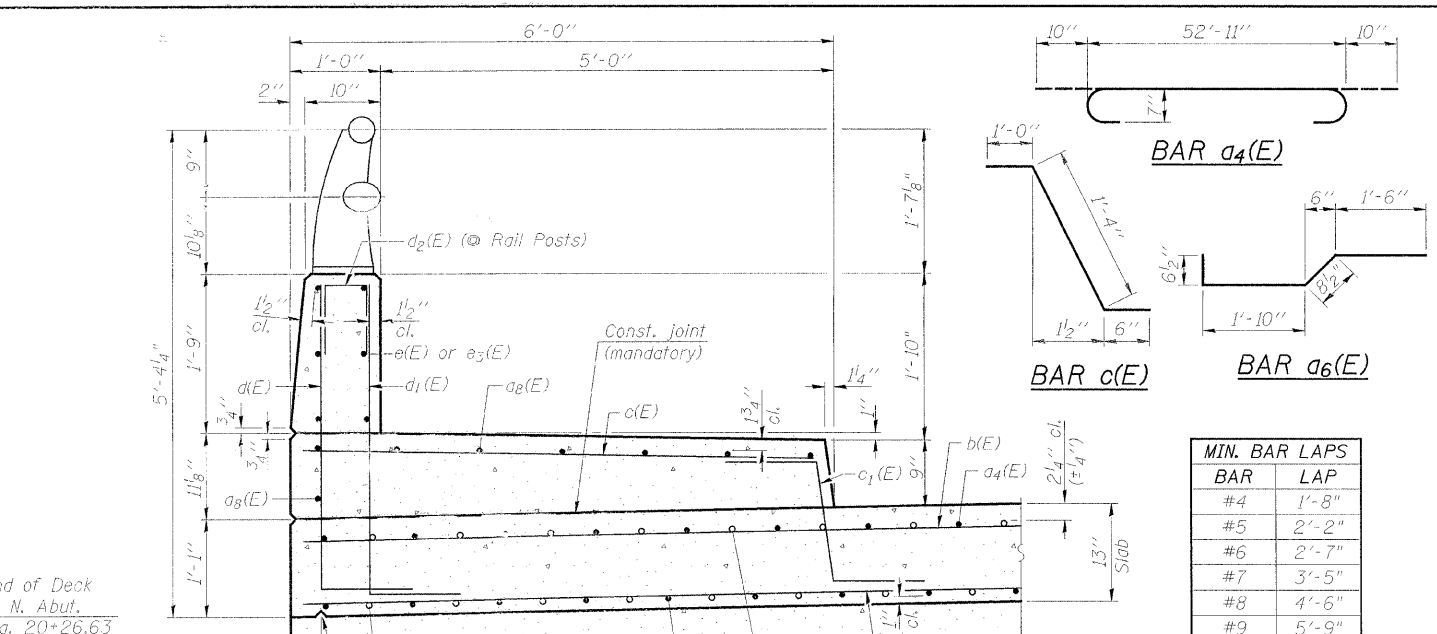
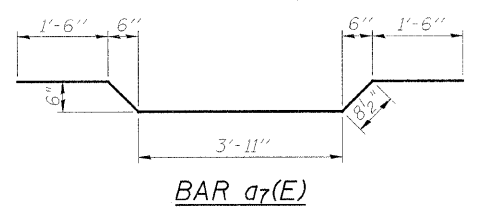
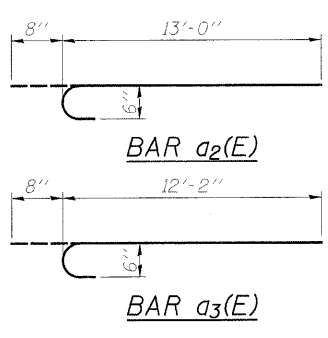
\*See Superstructure Details Sheet



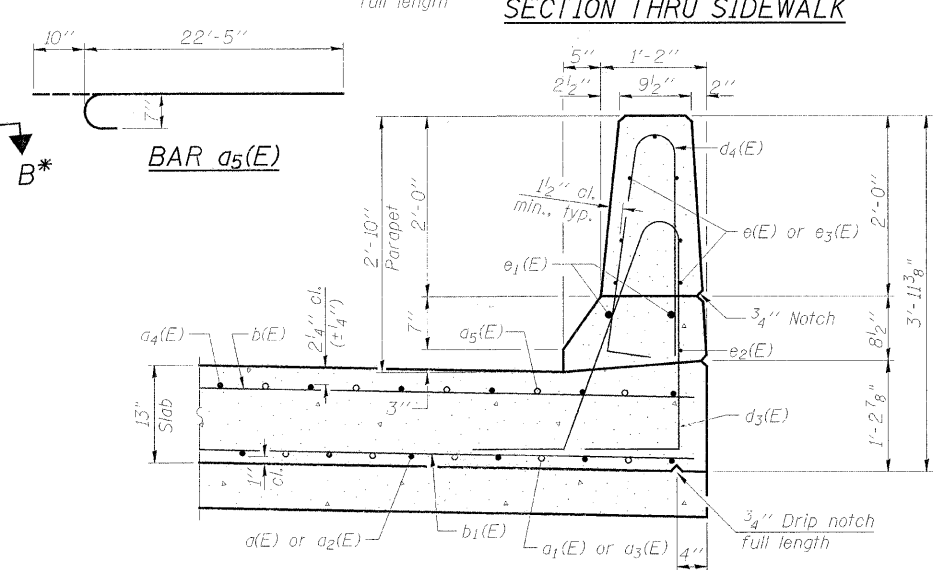
**CROSS SECTION**  
(Looking North)



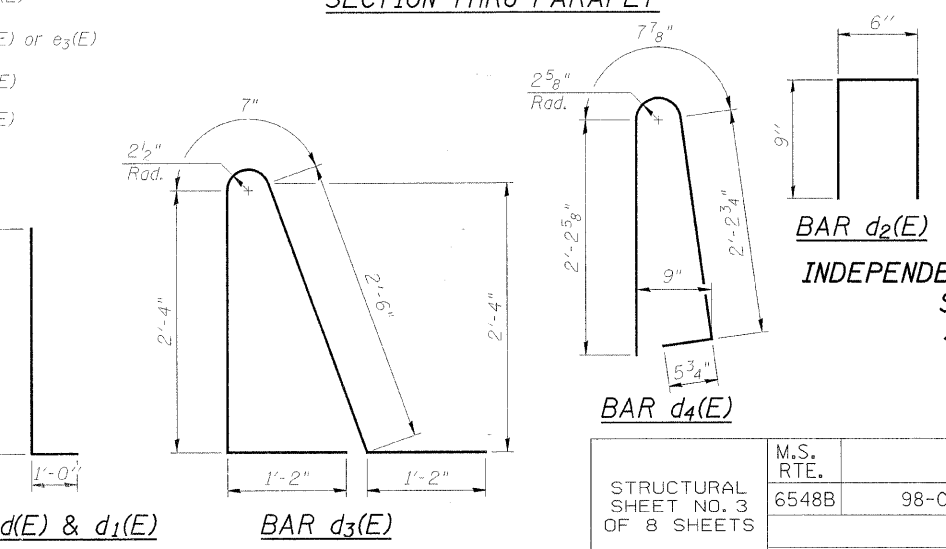
**DEAD LOAD DEFLECTION DIAGRAM**



**SECTION THRU SIDEWALK**



**SECTION THRU PARAPET**



**BARS d(E) & d1(E)**

**BAR d3(E)**

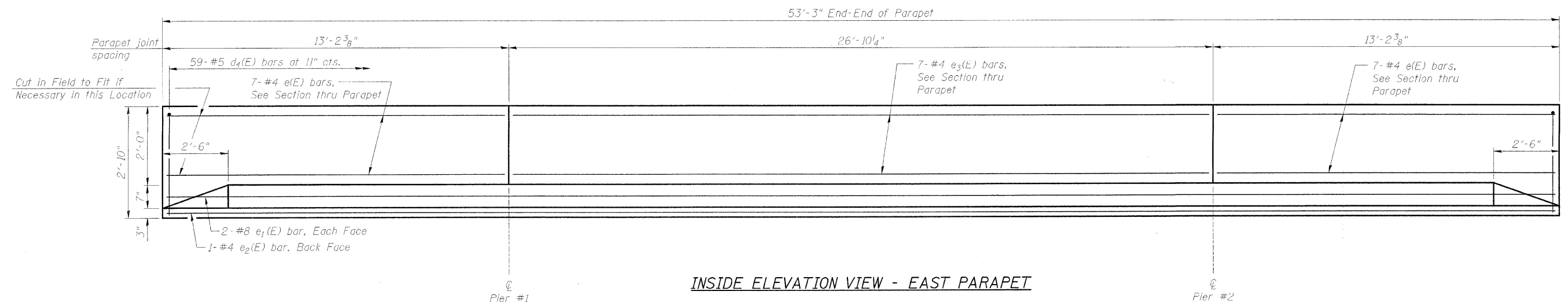
MIN. BAR LAPS	
BAR	LAP
#4	1'-8"
#5	2'-2"
#6	2'-7"
#7	3'-5"
#8	4'-6"
#9	5'-9"

**SUPERSTRUCTURE BILL OF MATERIAL**

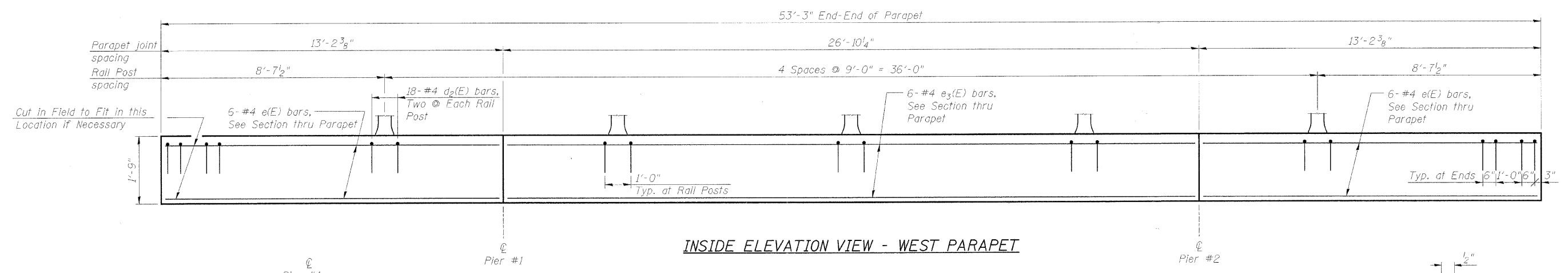
Bar	No.	Size	Length	Shape
a(E)	27	#9	32'-8"	—
a1(E)	26	#9	23'-10"	—
a2(E)	54	#6	15'-11"	—
a3(E)	52	#6	12'-10"	—
a4(E)	33	#7	54'-7"	—
a5(E)	64	#7	23'-3"	—
a6(E)	52	#5	4'-7"	—
a7(E)	52	#5	8'-4"	—
a8(E)	8	#5	52'-11"	—
b(E)	36	#5	38'-9"	—
b1(E)	36	#5	38'-9"	—
b2(E)	4	#5	38'-9"	—
b3(E)	6	#5	38'-9"	—
c(E)	54	#5	5'-7"	—
c1(E)	54	#5	2'-10"	—
d(E)	54	#4	4'-5"	L
d1(E)	54	#6	4'-5"	L
d2(E)	18	#4	2'-0"	—
d3(E)	59	#5	7'-9"	—
d4(E)	59	#5	5'-7"	—
e(E)	26	#4	12'-10"	—
e1(E)	2	#8	52'-11"	—
e2(E)	1	#4	52'-11"	—
e3(E)	13	#4	26'-6"	—
Concrete Superstructure			Cu. Yds.	107.5
Bridge Deck Grooving			Sq. Yds.	174
Protective Coat			Sq. Yds.	258
Reinforcement Bars, Epoxy Coated			Pound	21,190

**SUPERSTRUCTURE INDEPENDENCE AVE. OVER S. BR. OF KENT CK. STA. 20+00 (S.N. 101-6125) SECTION 98-00484-00-BR CITY OF ROCKFORD WINNEBAGO COUNTY WHA # 1038R08**

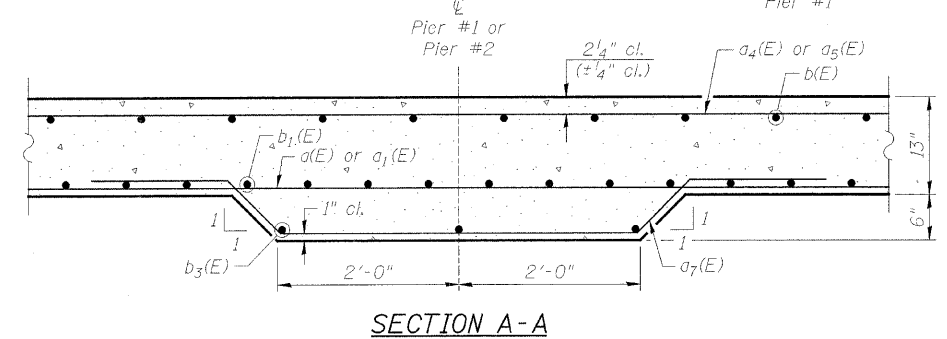
STRUCTURAL SHEET NO. 3 OF 8 SHEETS	M.S. RTE.	SECTION	COUNTY	TOTAL SHEETS	SHEET NO.
	6548B	98-00484-00-BR	WINNEBAGO	18	10
	CONTRACT NO. 85453				
FED. ROAD DIST. NO. - ILLINOIS FED. AID PROJECT BHM-5099(50)					



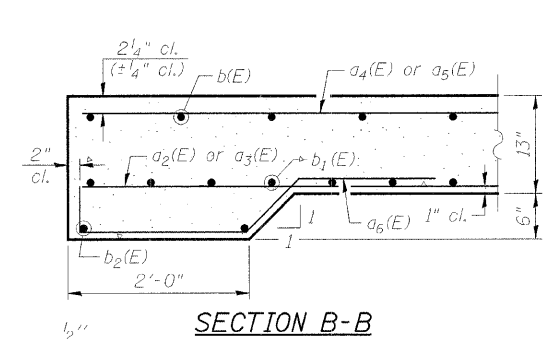
INSIDE ELEVATION VIEW - EAST PARAPET



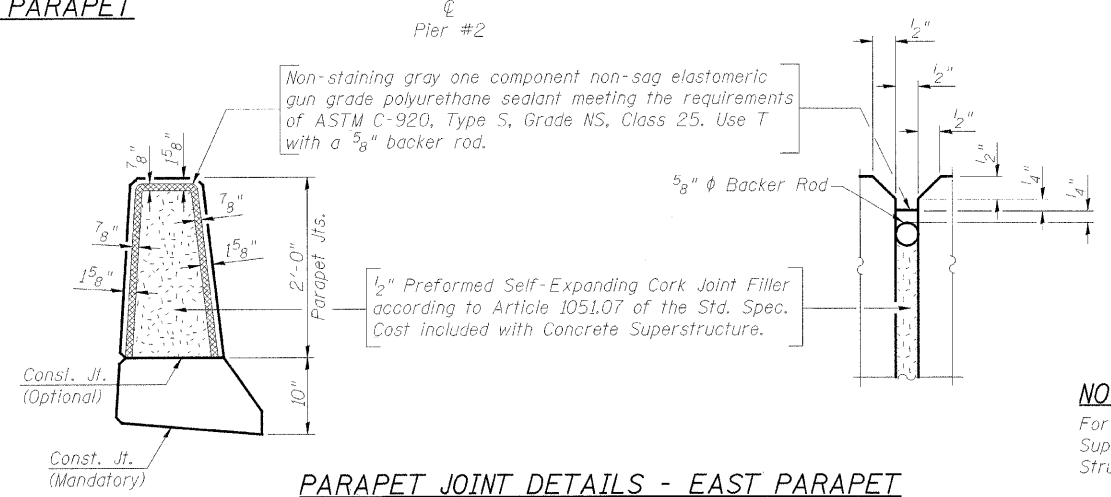
INSIDE ELEVATION VIEW - WEST PARAPET



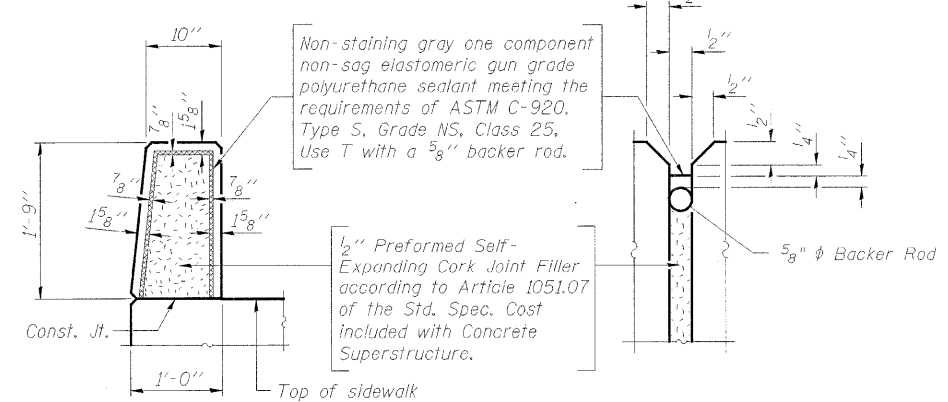
SECTION A-A



SECTION B-B



PARAPET JOINT DETAILS - EAST PARAPET

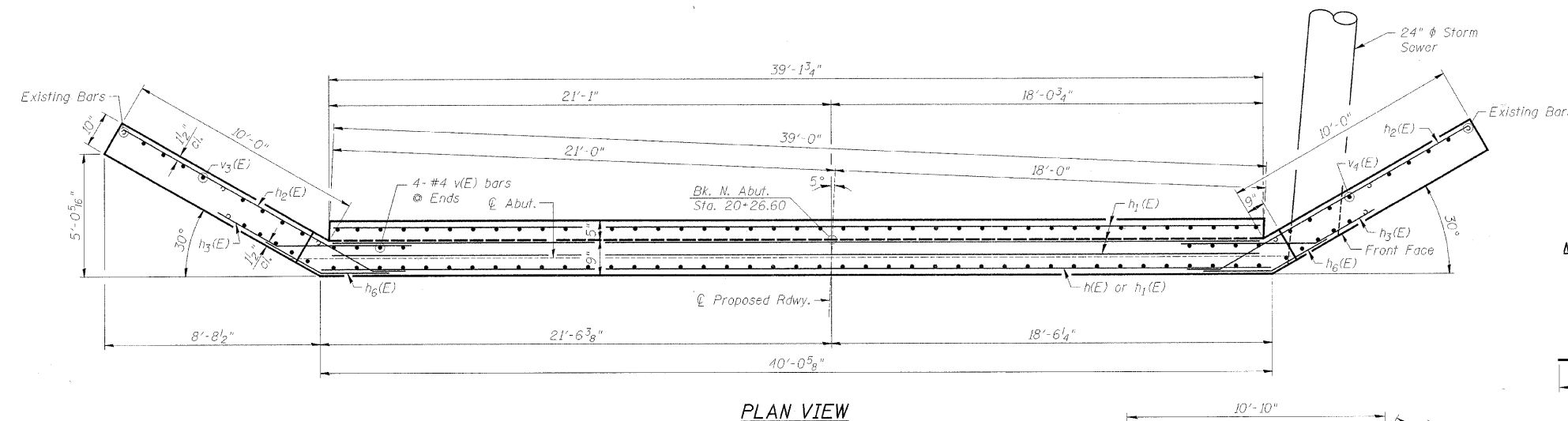
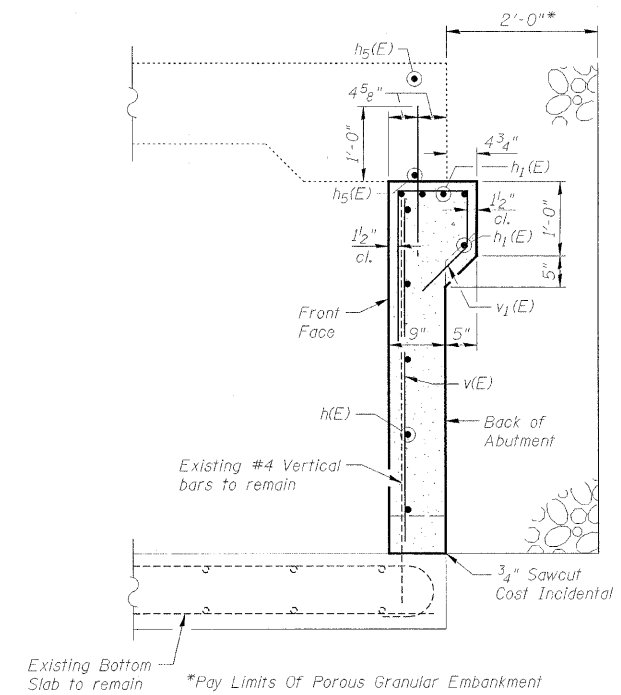
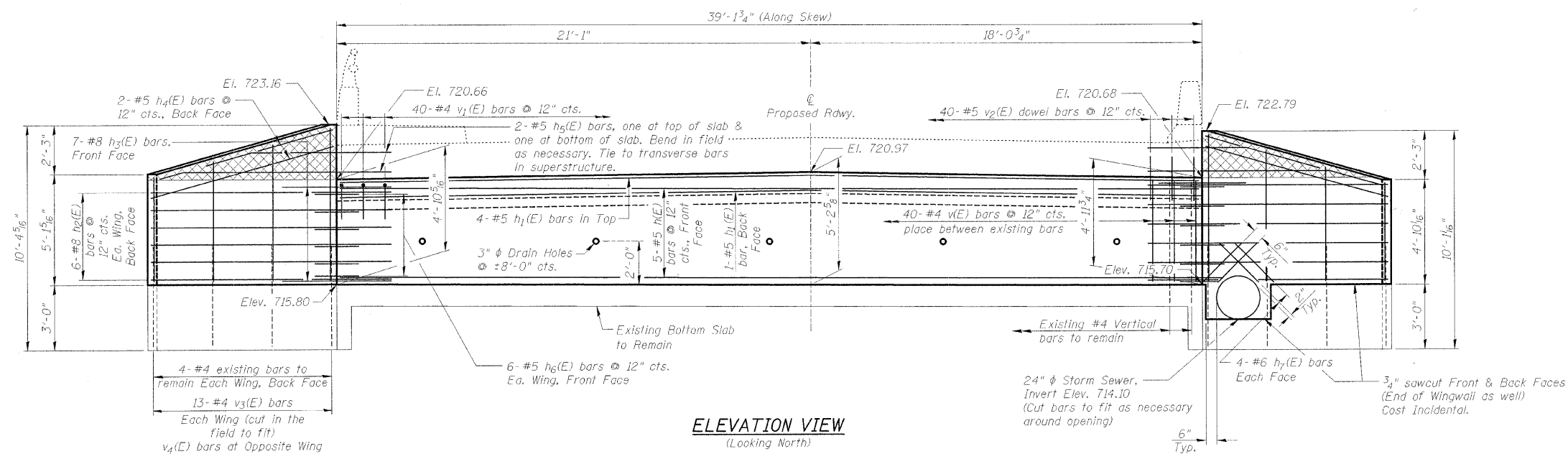


PARAPET JOINT DETAILS - WEST PARAPET

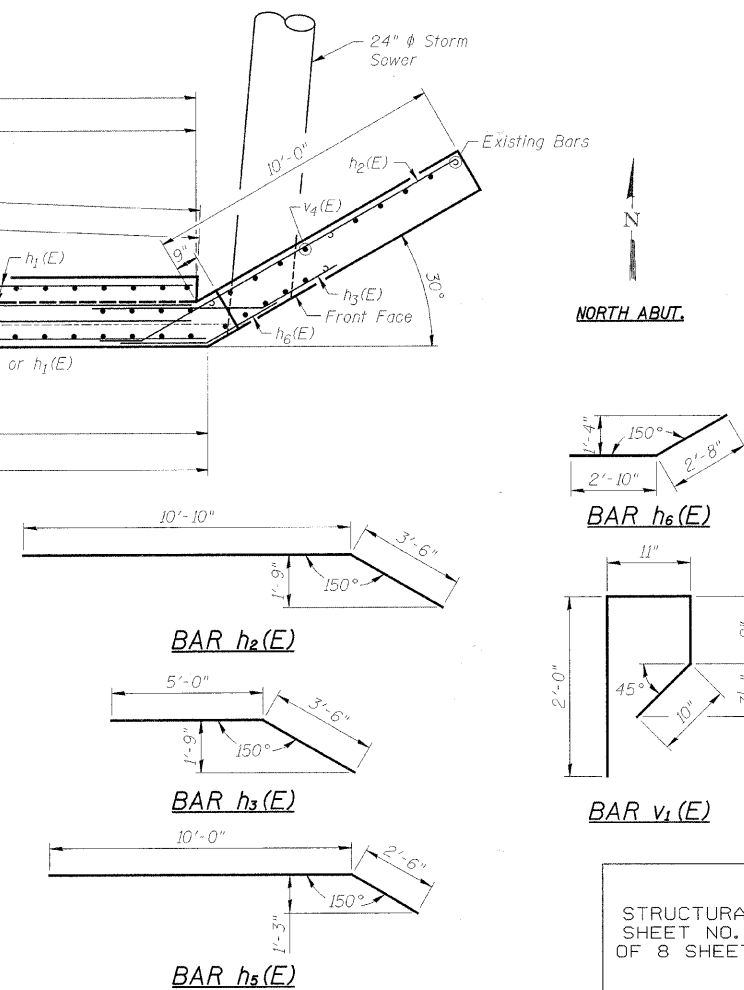
**NOTES:**  
For Bill of Material see Superstructure on Structural Sheet 3 of 8.

**SUPERSTRUCTURE DETAILS**  
INDEPENDENCE AVE. OVER S. BR. OF KENT CK.  
STA. 20+00 (S.N. 101-6125)  
SECTION 98-00484-00-BR  
CITY OF ROCKFORD  
WINNEBAGO COUNTY  
WHA # 1038R08

STRUCTURAL SHEET NO. 4 OF 8 SHEETS	M.S. RTE.	SECTION	COUNTY	TOTAL SHEETS	SHEET NO.
	6548B	98-00484-00-BR	WINNEBAGO	18	11
FED. ROAD DIST. NO. - ILLINOIS			FED. AID PROJECT	BHM-5099(50)	
CONTRACT NO. 85453					



MIN. BAR LAPS	
BAR	LAP
#4	1'-8"
#5	2'-2"
#6	2'-7"
#7	3'-5"
#8	4'-6"



**BILL OF MATERIAL**

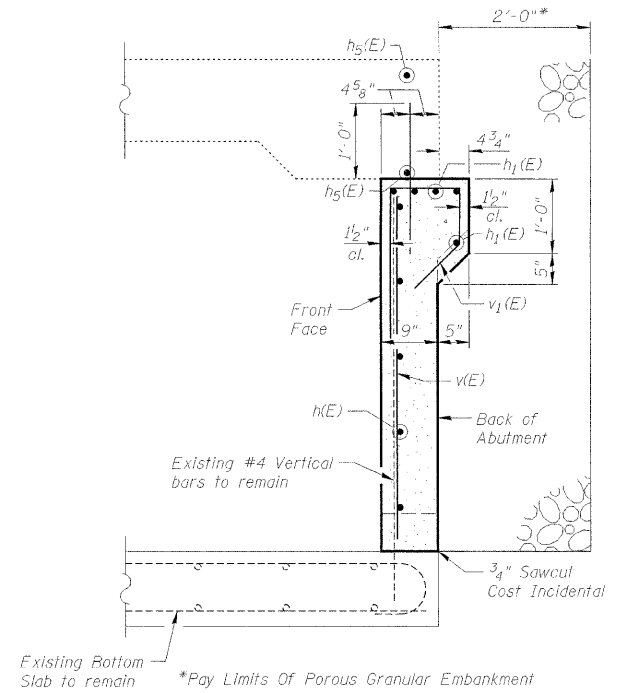
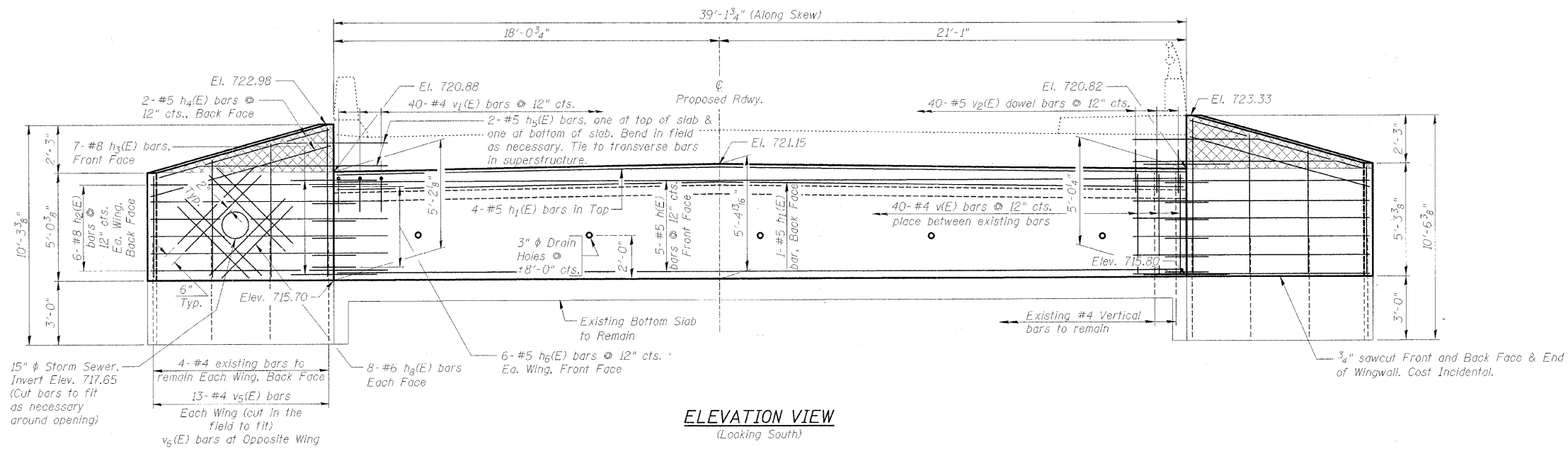
Bar	No.	Size	Length	Shape	
h(E)	5	#5	39'-9"	—	
h1(E)	5	#5	38'-10"	—	
h2(E)	12	#8	14'-4"	—	
h3(E)	14	#8	8'-6"	—	
h4(E)	4	#5	10'-0"	—	
h5(E)	4	#5	12'-6"	—	
h6(E)	12	#5	5'-6"	—	
h7(E)	8	#6	2'-6"	—	
v(E)	48	#4	4'-7"	—	
v1(E)	40	#4	4'-6"	P	
v2(E)	40	#5	2'-0"	—	
v3(E)	13	#4	7'-2"	—	
v4(E)	13	#4	6'-10"	—	
Porous Granular Embankment				Cu. Yd.	19
Concrete Removal				Cu. Yd.	12.6
Structure Excavation				Cu. Yd.	29
Concrete Structures				Cu. Yd.	9.9
Reinforcement Bars				Pound	1,850

**NOTES:**

- Wing Reinforcement Shown Is Typical, Unless Shown Otherwise.
- All Exposed Edges Shall Have Standard 3/4" Chamfers, Except As Noted.
- Hatched Portion Of Wingwalls To Be Poured With Superstructure.
- Backfill shall be placed behind the abutment after the superstructure has been poured and falsework removed. See Article 502.10 of the Standard Specifications.
- Existing reinforcement shall be cleaned and incorporated into the new construction. Cost included with Concrete Removal.

**NORTH ABUTMENT DETAILS**  
**INDEPENDENCE AVE. OVER S. BR. OF KENT CK.**  
**STA. 20+00 (S.N. 101-6125)**  
**SECTION 98-00484-00-BR**  
**CITY OF ROCKFORD**  
**WINNEBAGO COUNTY**  
 WHA # 1038R08

STRUCTURAL SHEET NO. 5 OF 8 SHEETS	M.S. RTE.	SECTION	COUNTY	TOTAL SHEETS	SHEET NO.
	6548B	98-00484-00-BR	WINNEBAGO	18	12
	CONTRACT NO. 85453				
FED. ROAD DIST. NO.		ILLINOIS	FED. AID PROJECT	BHM-5099(50)	



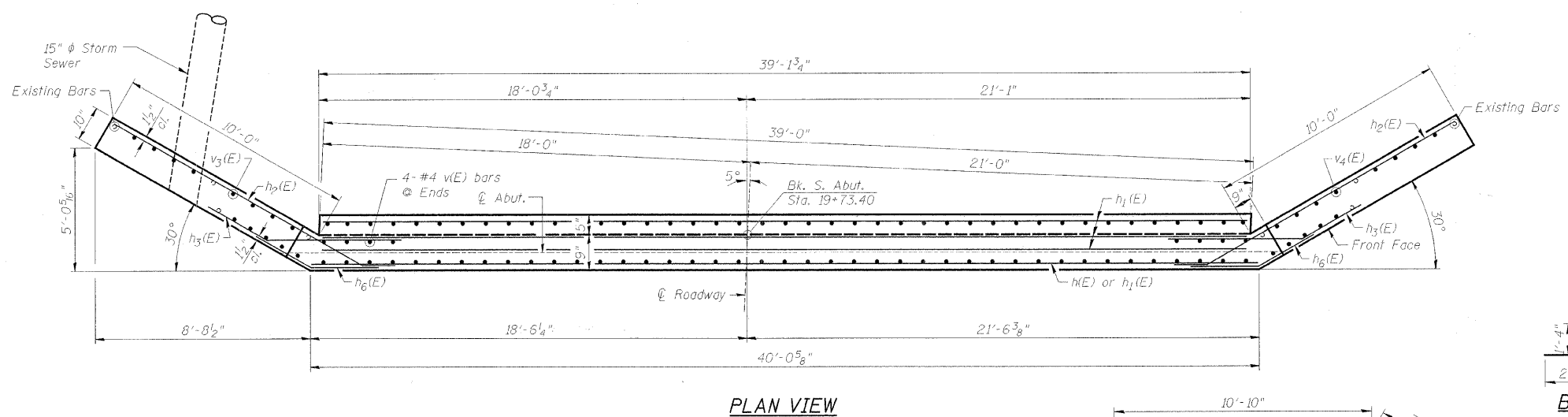
**BILL OF MATERIAL**

Bar	No.	Size	Length	Shape
h(E)	5	#5	39'-9"	—
h1(E)	5	#5	38'-10"	—
h2(E)	12	#8	14'-4"	—
h3(E)	14	#8	8'-6"	—
h4(E)	4	#5	10'-0"	—
h5(E)	4	#5	12'-6"	—
h6(E)	12	#5	5'-6"	—
h8(E)	16	#6	5'-0"	—
v(E)	48	#4	4'-7"	—
v1(E)	40	#4	4'-6"	P
v2(E)	40	#5	2'-0"	—
v5(E)	13	#4	7'-0"	—
v6(E)	13	#4	7'-3"	—
Porous Granular Embankment				Cu. Yd. 20
Concrete Removal				Cu. Yd. 12.6
Structure Excavation				Cu. Yd. 30
Concrete Structures				Cu. Yd. 10.3
Reinforcement Bars				Pound 1,950

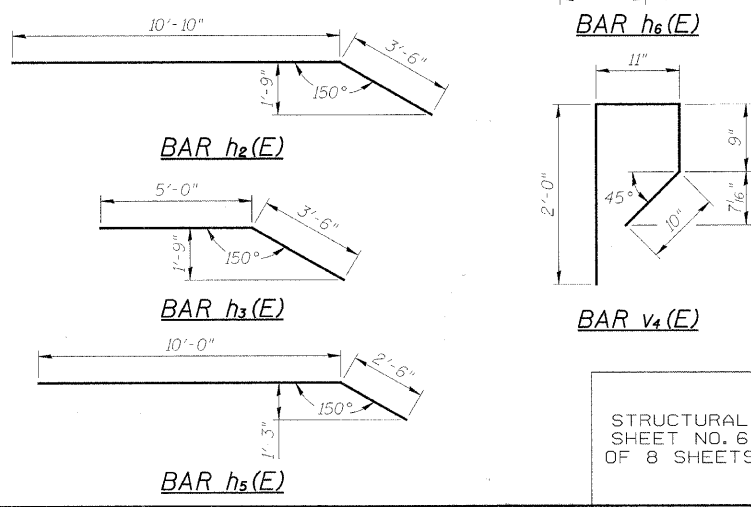
**NOTES:**  
 Wing Reinforcement Shown Is Typical, Unless Shown Otherwise.  
 All Exposed Edges Shall Have Standard 3/4" Chamfers, Except As Noted.  
 Hatched Portion Of Wingwalls To Be Poured With Superstructure.  
 Backfill shall be placed behind the abutment after the superstructure has been poured and falsework removed. See Article 502.10 of the Standard Specifications.  
 Existing reinforcement shall be cleaned and incorporated into the new construction. Cost included with Concrete Removal.

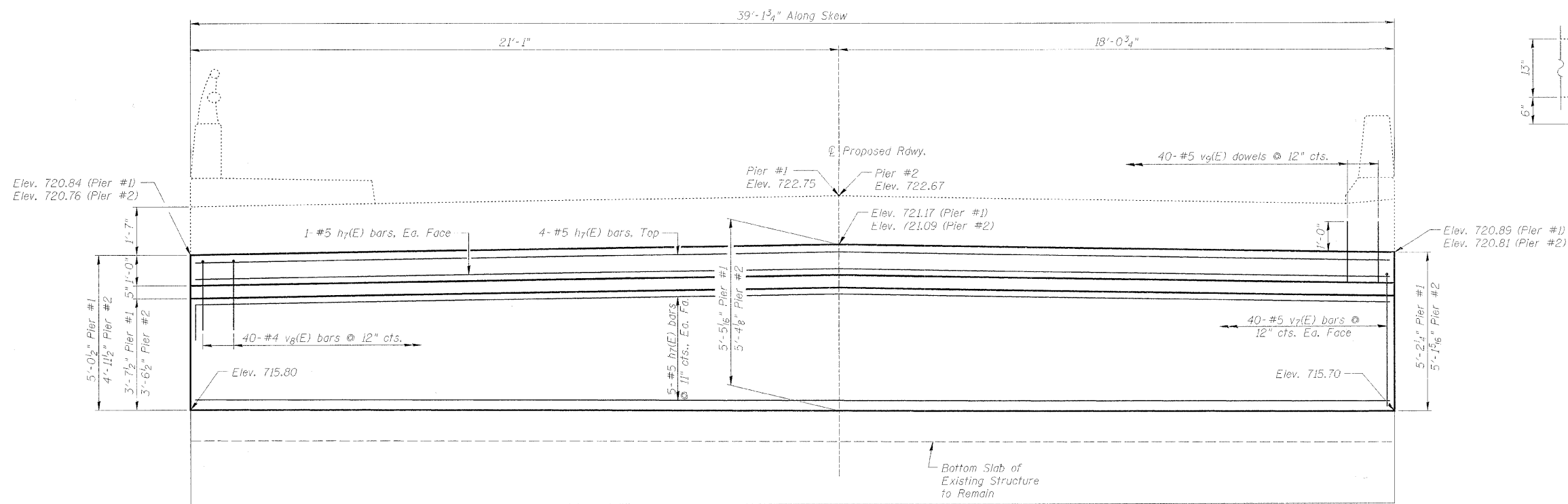
**SOUTH ABUTMENT DETAILS**  
 INDEPENDENCE AVE. OVER S. BR. OF KENT CK.  
 STA. 20+00 (S.N. 101-6125)  
 SECTION 98-00484-00-BR  
 CITY OF ROCKFORD  
 WINNEBAGO COUNTY  
 WHA # 1038R08

STRUCTURAL SHEET NO. 6 OF 8 SHEETS	M.S. RTE.	SECTION	COUNTY	TOTAL SHEETS	SHEET NO.
	6548B	98-00484-00-BR	WINNEBAGO	18	13
	CONTRACT NO. 85453				
FED. ROAD DIST. NO.		ILLINOIS	FED. AID PROJECT	BHM-5099(50)	

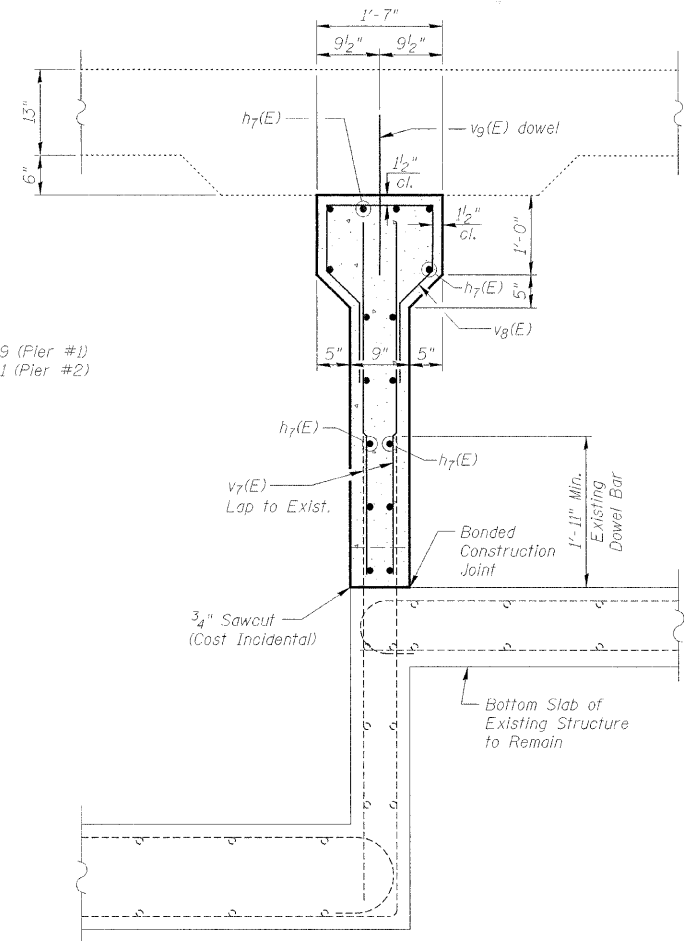


MIN. BAR LAPS	
BAR	LAP
#4	1'-8"
#5	2'-2"
#6	2'-7"
#7	3'-5"
#8	4'-6"

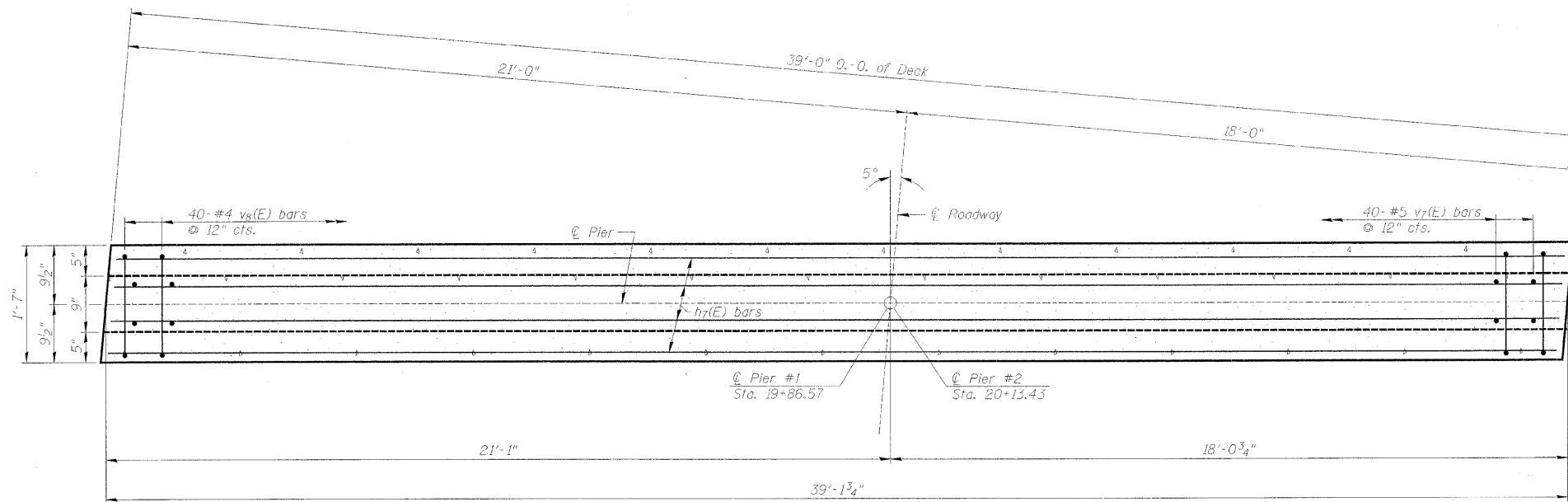




**ELEVATION VIEW**  
(Looking North)

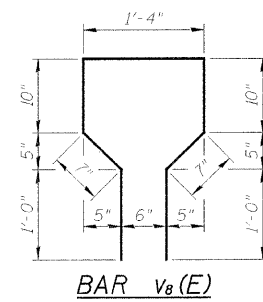


**SECTION THRU PIER**



**PLAN VIEW**

MIN. BAR LAPS	
BAR	LAP
#4	1'-8"
#5	2'-2"



**BAR v8(E)**

**BILL OF MATERIAL - PIER #1 & #2**

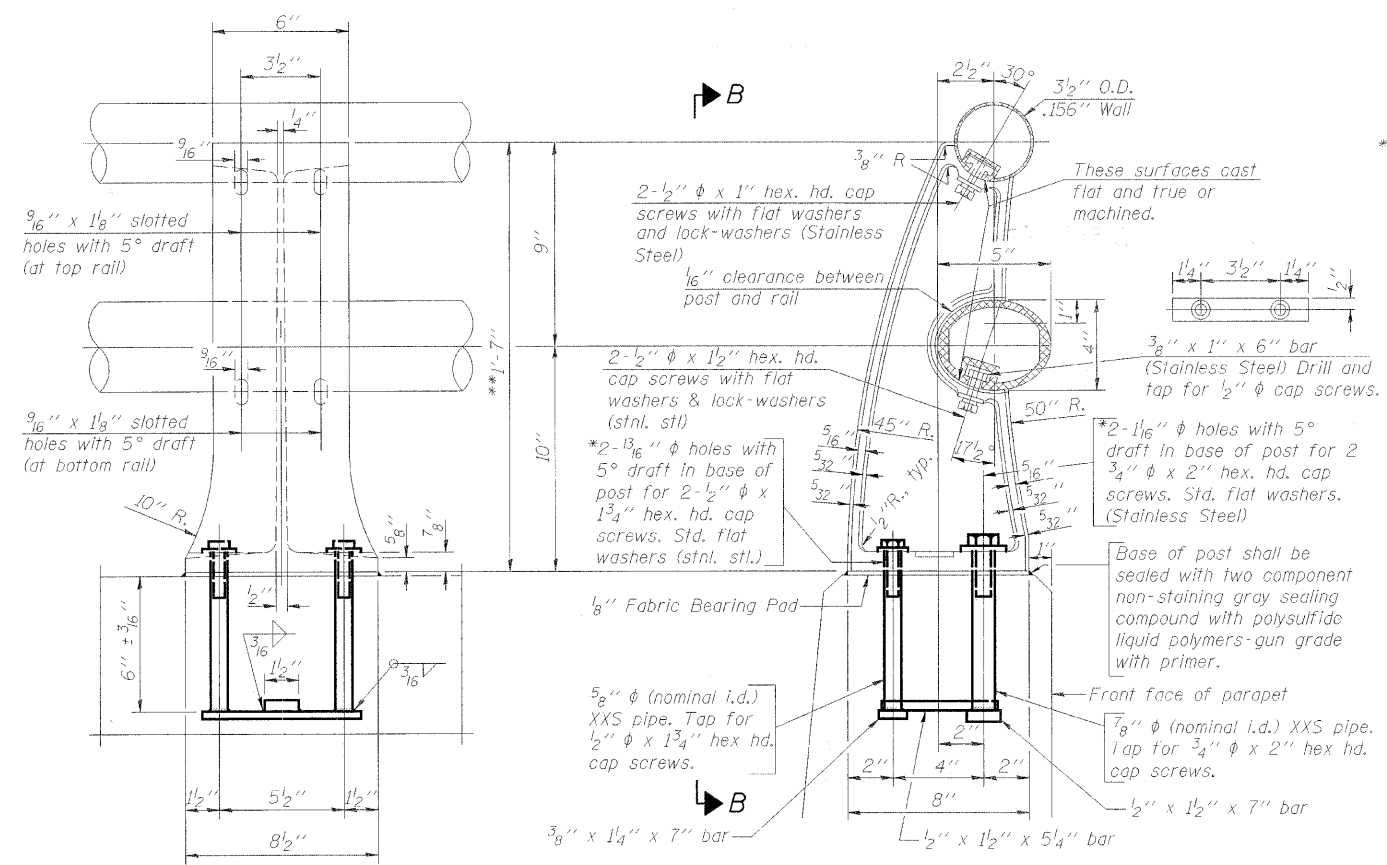
Bar	No.	Size	Length	Shape
h7(E)	32	#5	38'-10"	—
v7(E)	160	#5	4'-8"	—
v8(E)	80	#4	6'-2"	U
v9(E)	80	#5	2'-0"	—
Concrete Removal			Cu. Yd.	14.6
Concrete Structures			Cu. Yd.	14.2
Reinforcement Bars, Epoxy Coated			Pound	2,580

**NOTES:**

All edges shall have standard 3/4" chamfer except as noted.  
Existing reinforcement shall be cleaned and incorporated into the new construction. Cost included with Concrete Removal.

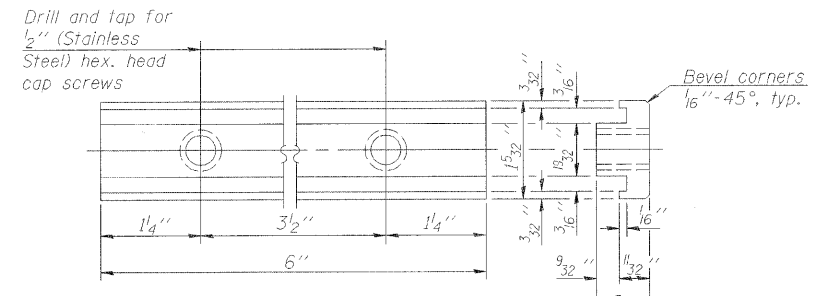
**PIER #1 & #2 DETAILS**  
**INDEPENDENCE AVE. OVER S. BR. OF KENT CK.**  
**STA. 20+00 (S.N. 101-6125)**  
**SECTION 98-00484-00-BR**  
**CITY OF ROCKFORD**  
**WINNEBAGO COUNTY**  
WHA # 1038R08

STRUCTURAL SHEET NO. 7 OF 8 SHEETS	M.S. RTE.	SECTION	COUNTY	TOTAL SHEETS	SHEET NO.
	6548B	98-00484-00-BR	WINNEBAGO	18	14
	CONTRACT NO. 85453				
FED. ROAD DIST. NO.		ILLINOIS FED. AID PROJECT		BHM-5099(50)	



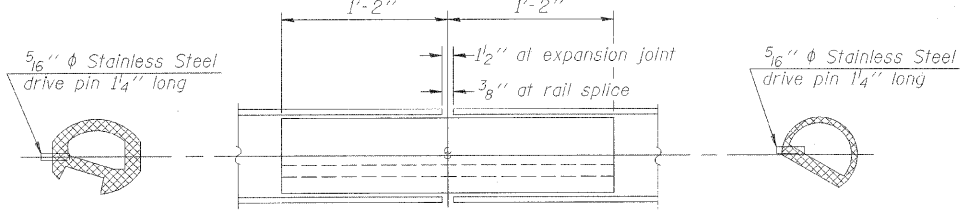
SECTION A-A

VIEW B-B RAIL POST DETAILS

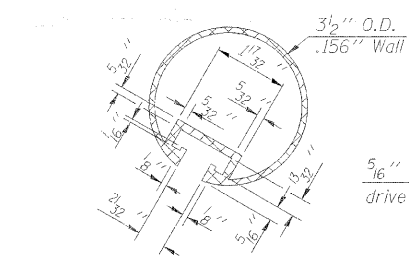


RAIL POST CLAMP BAR

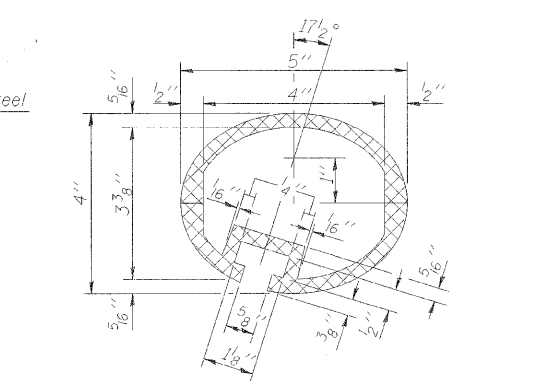
For Top Rail



RAIL SPLICE



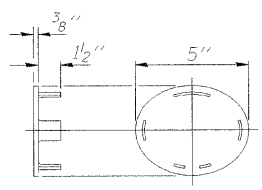
SECTION THRU TOP RAIL



SEC. THRU ELLIPTICAL RAIL SECTION

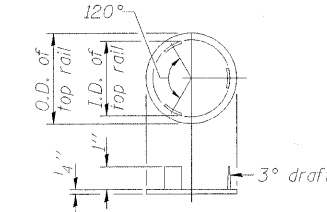
\*In lieu of the cast-in-place anchor device shown, the Contractor has the option of drilling and setting stainless steel anchor rods of the same diameter and grade as the specified cap screws according to Article 509.06 of the Standard Specifications. Embedment shall be according to the manufacturer's specifications.

\*\* Existing Railing to be removed and re-used.



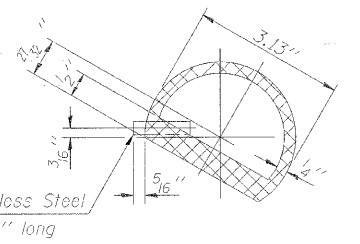
CAST END CAP

For bottom rail DRIVE FIT TYPE



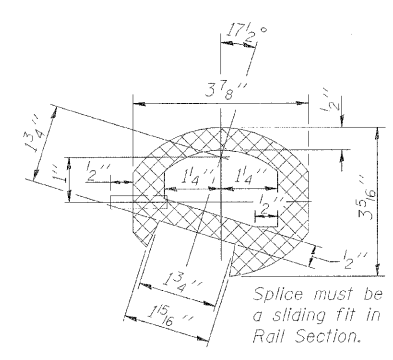
CAST END CAP

For Top rail



SECTION THRU SPLICE

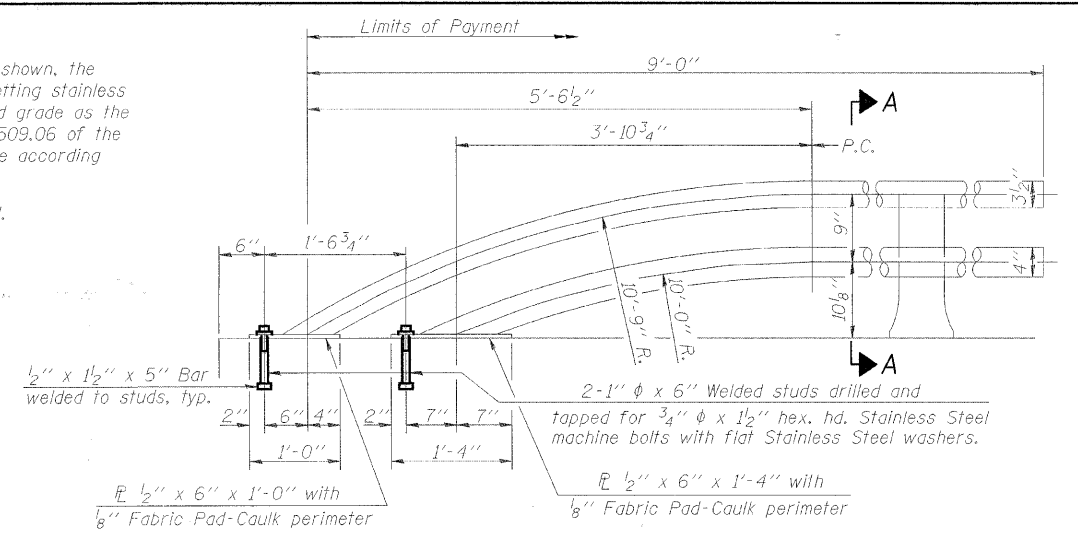
For Top Rail



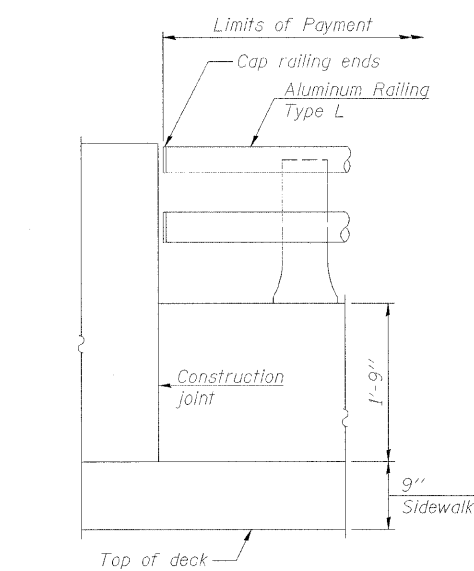
SEC. THRU SPLICE

Notes:

- All Posts shall be normal to parapet.
- All joints in rail shall be spliced per detail.
- All exposed rail ends shall be capped per detail.
- Provide 1-1/8 inch and 2-1/8 inch Aluminum Shims for 25% of the Posts. Rail elements shall be parallel to Grade-high spots will be ground and low spots shimmed.
- See Structural Sheet 4 of 8 for rail post spacing.



RAIL TERMINAL SECTION



RAIL END TREATMENT FOR TYPE 5 AND 6 TERMINAL

Note: The end rail post shall be set back as required for the terminal rail section.

BILL OF MATERIAL

Item	Unit	Quantity
Removing and Re-Erecting Existing Railing	Foot	52

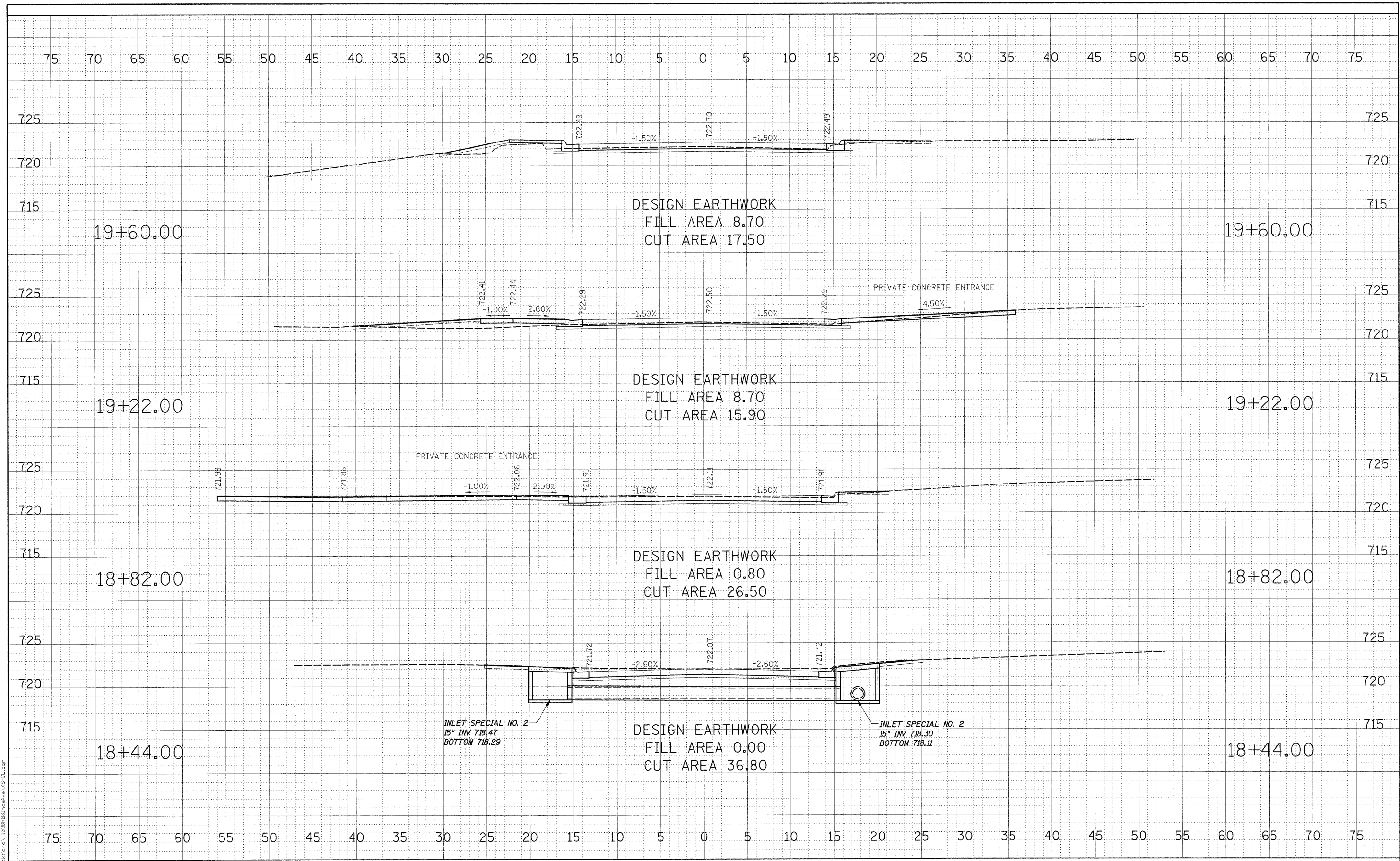
Cost of anchorage devices, bolts, & washers included in Removing and Re-Erecting Existing Railing.

ALUMINUM RAILING, TYPE L DETAILS SHEET  
INDEPENDENCE AVE. OVER S. BR. OF KENT CK.  
STA. 20+00 (S.N. 101-6125)  
SECTION 98-00484-00-BR  
CITY OF ROCKFORD  
WINNEBAGO COUNTY  
WHA # 1038R08

STRUCTURAL SHEET NO. 8 OF 8 SHEETS	M.S. RTE.	SECTION	COUNTY	TOTAL SHEETS	SHEET NO.
6548B		98-00484-00-BR	WINNEBAGO	18	15
CONTRACT NO. 85453					
FED. ROAD DIST. NO.		ILLINOIS FED. AID PROJECT		BHM-5099(50)	

DATE	
BY	
DESIGNED	
DRAWN	
CHECKED	
DATE	
NO.	

DATE	
BY	
DESIGNED	
DRAWN	
CHECKED	
DATE	
NO.	



FILE NAME: c:\rockford\18+44\18+44.dwg

**WILLET, HOFMANN & ASSOCIATES, INC.**  
**CONSULTING ENGINEERS**  
 809 East Second Street Dixon, IL 61021  
 Phone 815.284.3381 Fax 815.284.3385  
 Design Firm 815-284-0916  
 www.willett-hofmann.com

USER NAME =	DESIGNED - SMG	REVISED -
PLOT SCALE =	DRAWN - SMG	REVISED -
PLOT DATE =	CHECKED - GS	REVISED -
	DATE - 1-9-09	REVISED -

**CITY OF ROCKFORD**  
**INDEPENDENCE AVENUE**  
**OVER S. BRANCH OF KENT CREEK**

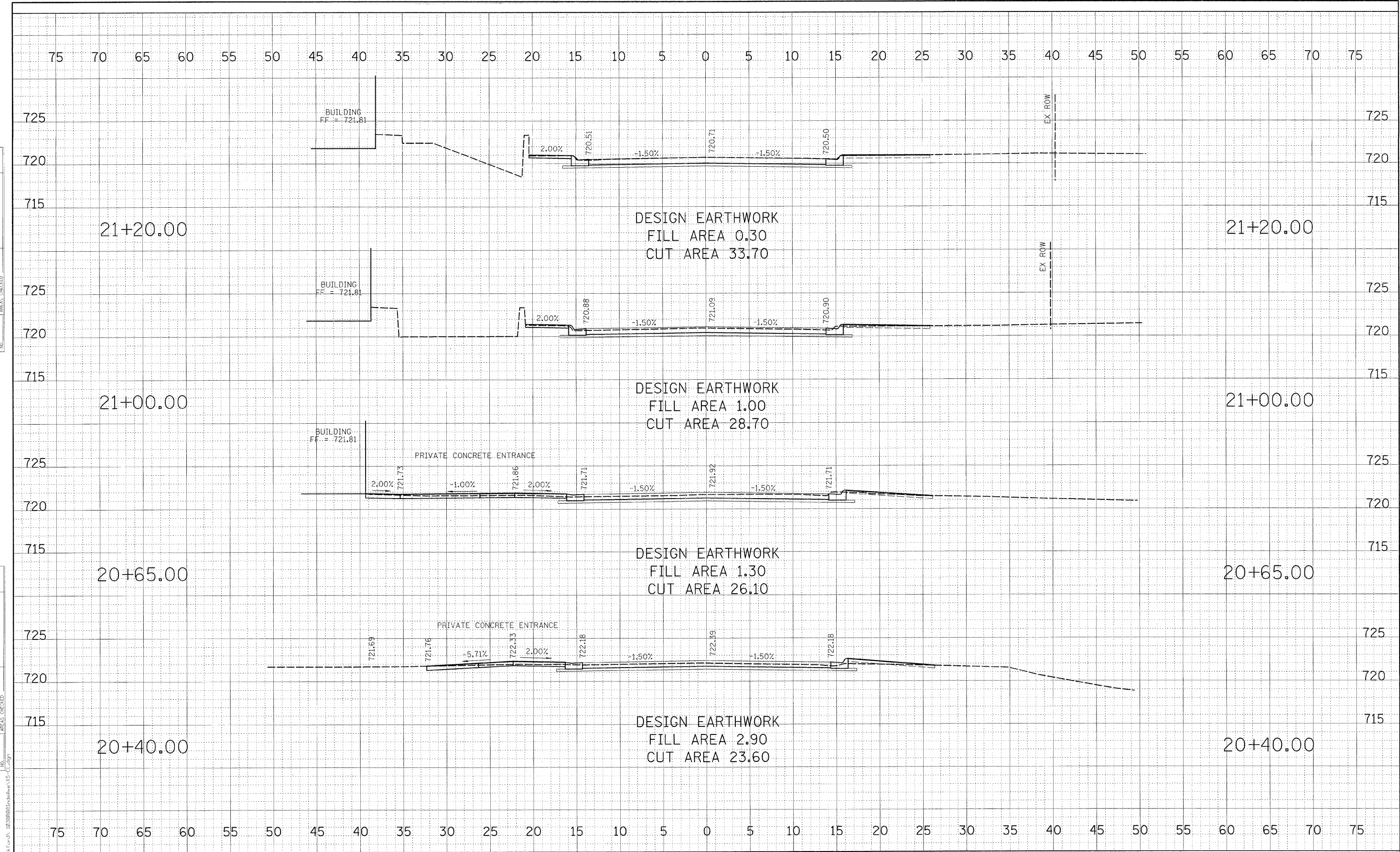
**Cross Sections**

F.A. RTE.	SECTION	COUNTY	TOTAL SHEETS	SHEET NO.
	98-00484-00-BR	WINNEBAGO	18	16
STA. 18+44	TO STA. 19+60	CONTRACT NO. 85453		
FED. ROAD DIST. NO. - ILLINOIS FED. AID PROJECT				



DATE	BY
DESIGNED	SMG
DRAWN	SMG
CHECKED	GS
DATE	1-9-09

DATE	BY
DESIGNED	SMG
DRAWN	SMG
CHECKED	GS
DATE	1-9-09



FILE NAME: s:\a\Rockford\10326001\Rockford\_Vis-Cross

**WILLET, HOFMANN & ASSOCIATES, INC.**  
**CONSULTING ENGINEERS**  
 809 East Second Street Dixon, IL 61021  
 Phone 815.294.3381 Fax 815.294.3385  
 Design Firm # 184-00916  
 www.willetthofmann.com

USER NAME *	DESIGNED - SMG	REVISED -
	DRAWN - SMG	REVISED -
	CHECKED - GS	REVISED -
DATE - 1-9-09	REVISED -	

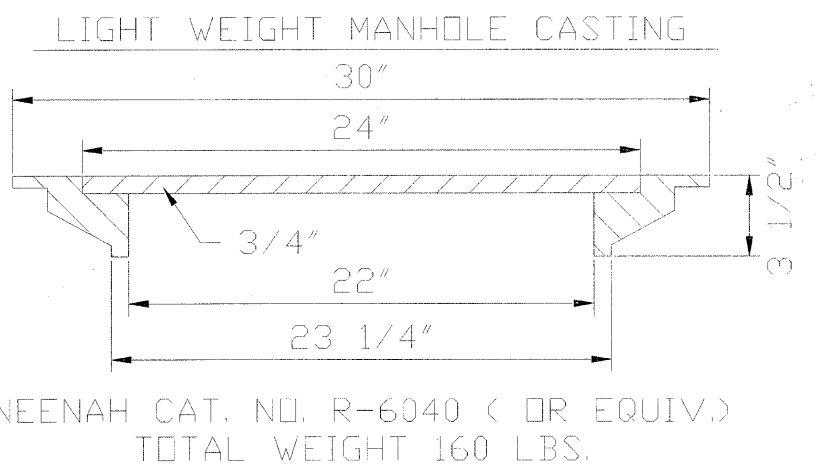
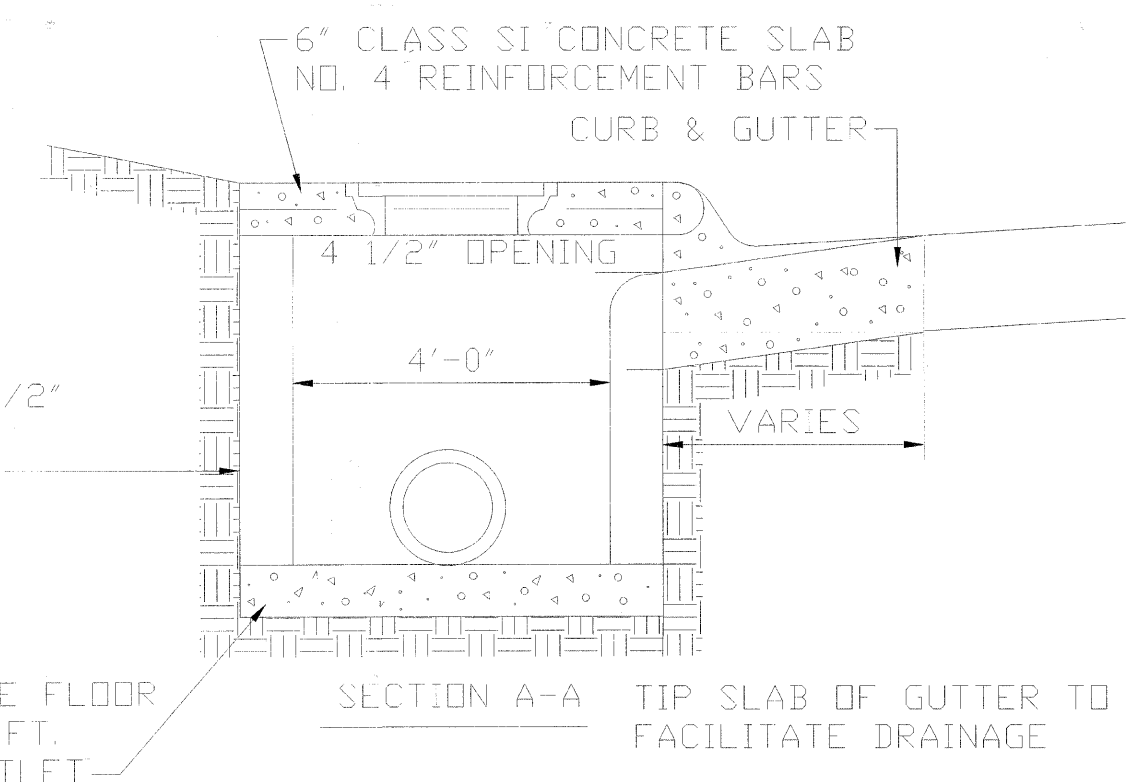
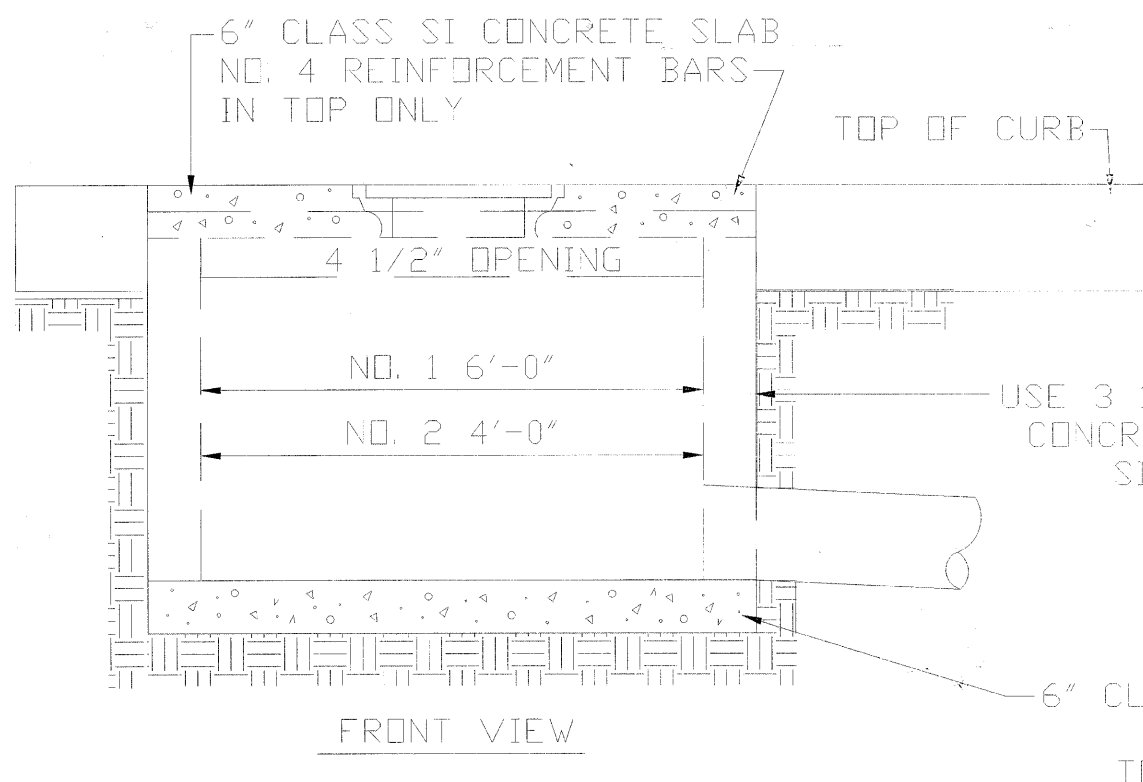
**CITY OF ROCKFORD**  
**INDEPENDENCE AVENUE**  
**OVER S. BRANCH OF KENT CREEK**

**Cross Sections**

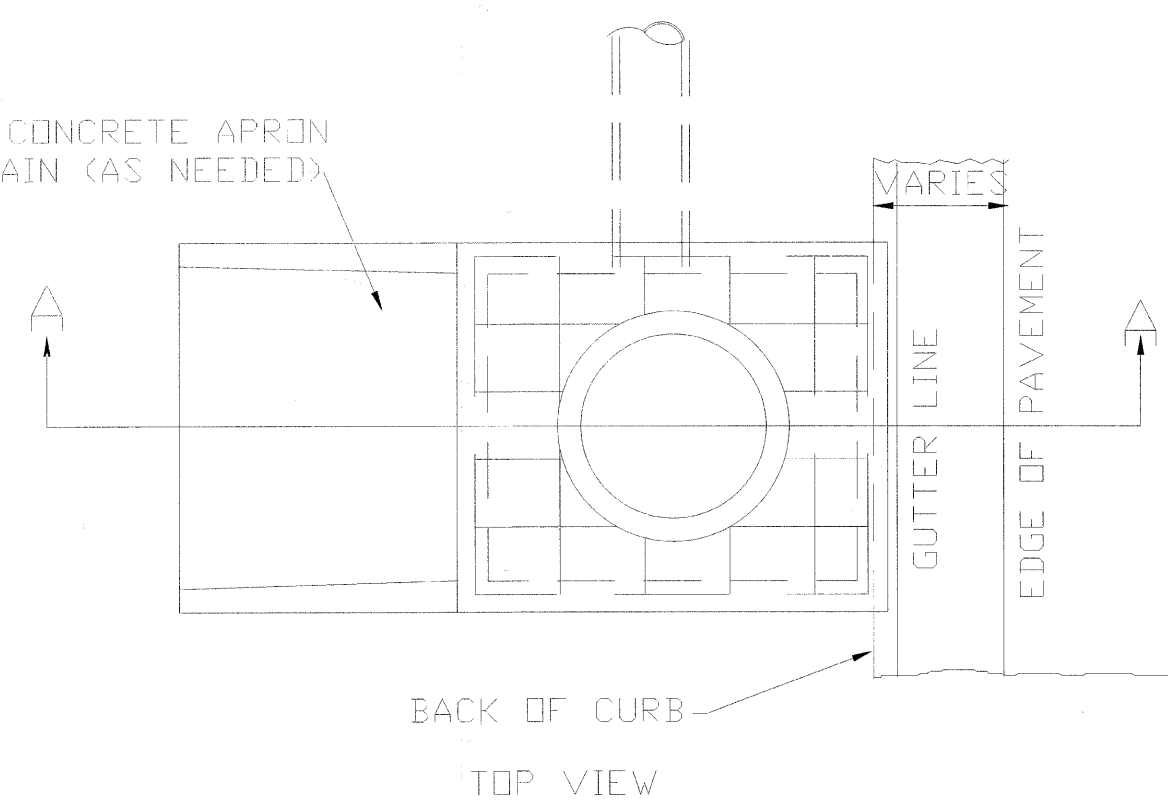
F.A. RTE.	SECTION	COUNTY	TOTAL SHEETS	SHEET NO.
	98-00484-00-BR	WINNEBAGO	18	17
STA. 20+40 TO STA. 21+20		CONTRACT NO. 85453		
FED. ROAD DIST. NO. ILLINOIS FED. AID PROJECT				

DATE	
BY	
DESIGNED	
PLOTTED	
GRADES CHECKED	
ALIGNMENT CHECKED	
NOTE BOOK	
NO.	
FILE NAME	

DATE	
BY	
DESIGNED	
PLOTTED	
GRADES CHECKED	
ALIGNMENT CHECKED	
NOTE BOOK	
NO.	
FILE NAME	



6" CLASS SI CONCRETE APRON  
SLOPE TO DRAIN (AS NEEDED)



NOTE:  
ALL EXCAVATION, BACKFILLING, CLASS SI CONCRETE, CONCRETE  
BLOCKS, MANHOLE FRAMES & LIDS, REINFORCEMENT BARS, ETC.  
USED IN CONSTRUCTION SHALL BE PAID FOR AT THE CONTRACT  
UNIT PRICE FOR INLET SPECIAL NO. 2

# INLET SPECIAL NO. 2

D-IS2MOD

FILE NAME = s:\rockford\1038988-Independence\CD-ISP2MOD.dgn

**WILLET, HOFMANN & ASSOCIATES, INC.**  
CONSULTING ENGINEERS  
809 East Second Street Dixon, IL 61021  
Phone 815.294.3381 Fax 815.294.3385  
Design Firm # 184-0018  
www.willettthofmann.com

USER NAME =	DESIGNED - SMG	REVISED -
	DRAWN - SMG	REVISED -
PLOT SCALE =	CHECKED - GS	REVISED -
PLOT DATE =	DATE - 1-9-09	REVISED -

**CITY OF ROCKFORD**  
INDEPENDENCE AVENUE  
OVER S. BRANCH OF KENT CREEK

**Inlet Special No. 2**

F.A. RTE.	SECTION	COUNTY	TOTAL SHEETS	SHEET NO.
	98-00484-00-BR	WINNEBAGO	18	18
STA.	TO STA.	CONTRACT NO. 85453		
FED. ROAD DIST. NO. ILLINOIS FED. AID PROJECT				