

INDEX OF SHEETS

- 1 COVER SHEET
- 2 LIST OF STANDARDS, GENERAL NOTES AND LEGEND
- 3-5 SUMMARY OF QUANTITIES
- 6-12 TYPICAL SECTIONS
- 13 SUPERELEVATION TABLES & DETAILS
- 14-27 SCHEDULES OF QUANTITIES
- 28 TIE POINTS
- 29 TRAFFIC CONTROL MAP
- 30-35 STAGE CONSTRUCTION PLANS
- 36-56 PLAN & PROFILES
- 57-76 DRAINAGE PLAN & PROFILES
- 77-83 RIGHT OF WAY PLATS
- 84-89 INTERSECTION & ENTRANCE INTERSECTION DETAILS
- 90-100 PAVEMENT MARKING PLANS
- 101-111 EROSION CONTROL PLANS
- 112-119 TRAFFIC SIGNAL PLANS & DETAILS
- 120-122 ENTRANCE DETAILS
- 123-128 SPECIAL DETAILS
- 129-218 CROSS SECTIONS

STATE OF ILLINOIS DEPARTMENT OF TRANSPORTATION DIVISION OF HIGHWAYS

PLANS FOR PROPOSED FEDERAL AID HIGHWAY ROADWAY RECONSTRUCTION

C.H. 20 [ETNA RD. (F.A.U. 6050) & CHAMPLAIN ST. (F.A.U. 6046)]

SECTION 06-00275-00-PV

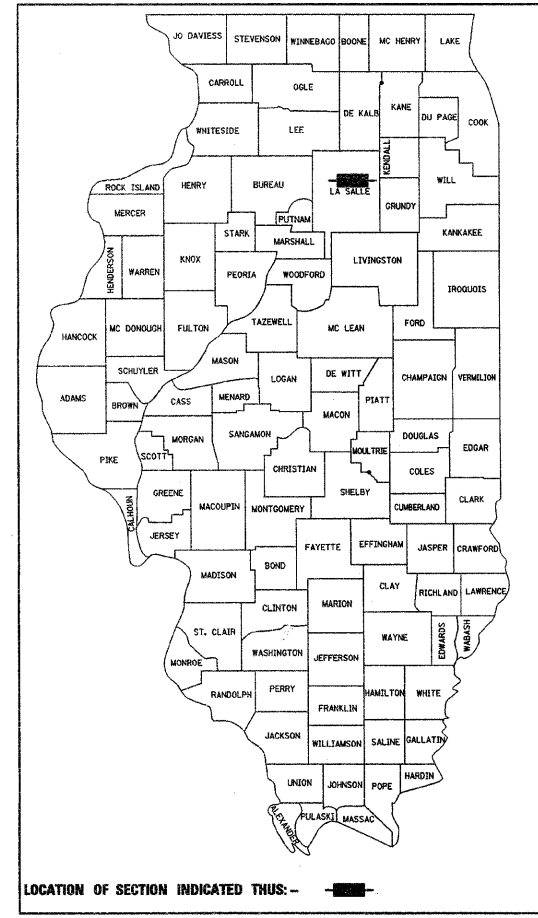
PROJECT M-5052(24)

FUNDING TYPE (STR)

LaSALLE COUNTY

C-93-063-07

WALLACE / DAYTON TOWNSHIP



DESIGN DESIGNATION
 C.H. 20 (ETNA RD.), 1.196 (28) URBAN COLLECTOR 2.31 (FD-20)
 C.H. 20 (CHAMPLAIN ST.), 463 (28) URBAN COLLECTOR 0.89 (FD-20)
DESIGN POLICY: C.H. 20 (ETNA RD.) - RECONSTRUCTION
 C.H. 20 (CHAMPLAIN ST.) - 3R
DESIGN SPEED: C.H. 20 (ETNA RD.) = 30 M.P.H.
 C.H. 20 (CHAMPLAIN ST.) = 35-45 M.P.H.

STATE OF ILLINOIS
DEPARTMENT OF TRANSPORTATION
DIVISION OF HIGHWAYS

SUBMITTED April 4 20 08

James G. Bujis
COUNTY ENGINEER

4-10 20 08
Kenneth R. Ly
DISTRICT ENGINEER LOCAL ROADS & STREETS

4-10 20 08
APPROVAL *George E. Lyman*
REGION 2 ENGINEER

**PRINTED BY THE AUTHORITY
OF THE STATE OF ILLINOIS**

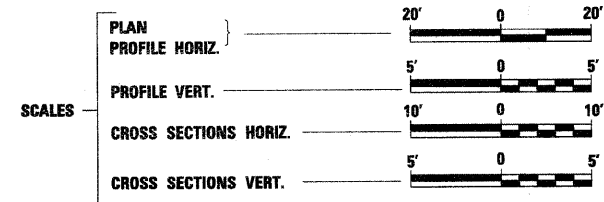
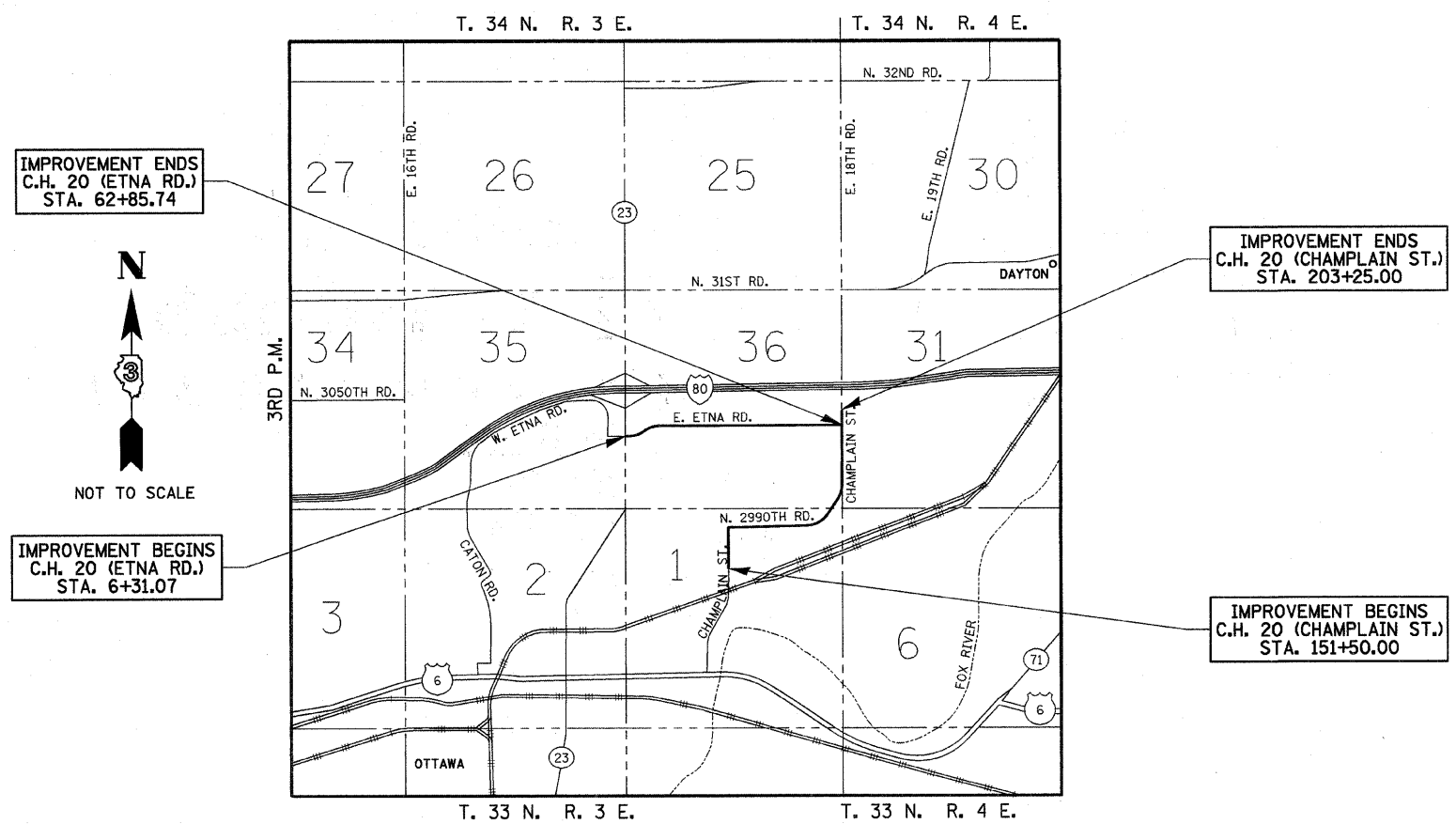
ELECTRIC
AMERENIP
MR. FRANK HEISER
340 RACCUGLIA DR.
LaSALLE, IL. 61301
(815) 224-6275

GAS
NICOR
MS. DORIS LEWIS
1629 N. CHAMPLAIN ST.
OTTAWA, IL. 61350
(815) 433-3850, EXT. 244

TELEPHONE
SBC
MR. BOB BUGIELSKI
65 W. WEBSTER ST. - 4TH FLOOR
JOLIET, IL. 60431
(815) 727-8049

CABLE T.V.
MEDIACOM
MR. DALE PETERS
2506 1/2 N. BLOOMINGTON ST.
STREATOR, IL. 61364
(815) 672-5071

WATER & SEWER
CITY OF OTTAWA
MR. DAVE NOBLE
301 W. MADISON ST.
OTTAWA, IL. 61350
(815) 433-0161



FULL SIZE PLANS HAVE BEEN PREPARED USING STANDARD ENGINEERING SCALES. REDUCED SIZED PLANS WILL NOT CONFORM TO STANDARD SCALES. IN MAKING MEASUREMENTS ON REDUCED PLANS, THE ABOVE SCALES MAY BE USED.

J.U.L.I.E.
JOINT UTILITY LOCATION INFORMATION FOR EXCAVATION
1-800-892-0123

C.H. 20 (ETNA RD.): GROSS LENGTH OF SECTION = 5654.67 LINEAL FEET = 1.07 MILES
NET LENGTH OF SECTION = 5654.67 LINEAL FEET = 1.07 MILES

C.H. 20 (CHAMPLAIN ST.): GROSS LENGTH OF SECTION = 5175.00 LINEAL FEET = 0.98 MILES
NET LENGTH OF SECTION = 5175.00 LINEAL FEET = 0.98 MILES

Hutchinson Engineering, Inc.
Jacksonville - Since 1945 - Shorewood
2008 JOB# 2389

42080
REGISTERED
PROFESSIONAL
ENGINEER
STATE OF ILLINOIS
3/19/08

EXPIRES 11/30/09
ENGINEERS SEAL