

- ① STA. 201+10.00, 40.00' RT.
- ② STA. 201+10.00, 65.00' RT.
- ③ STA. 201+45.00, 65.00' RT.
- ④ STA. 201+45.00, 75.00' RT.
- ⑤ STA. 201+54.75, 40.00' LT. = STA. 62+60.19, 55.78' LT.
- ⑥ STA. 202+30.00, 40.00' LT.
- ⑦ STA. 202+30.00, 55.00' LT.
- ⑧ STA. 203+25.00, 33.20' LT.

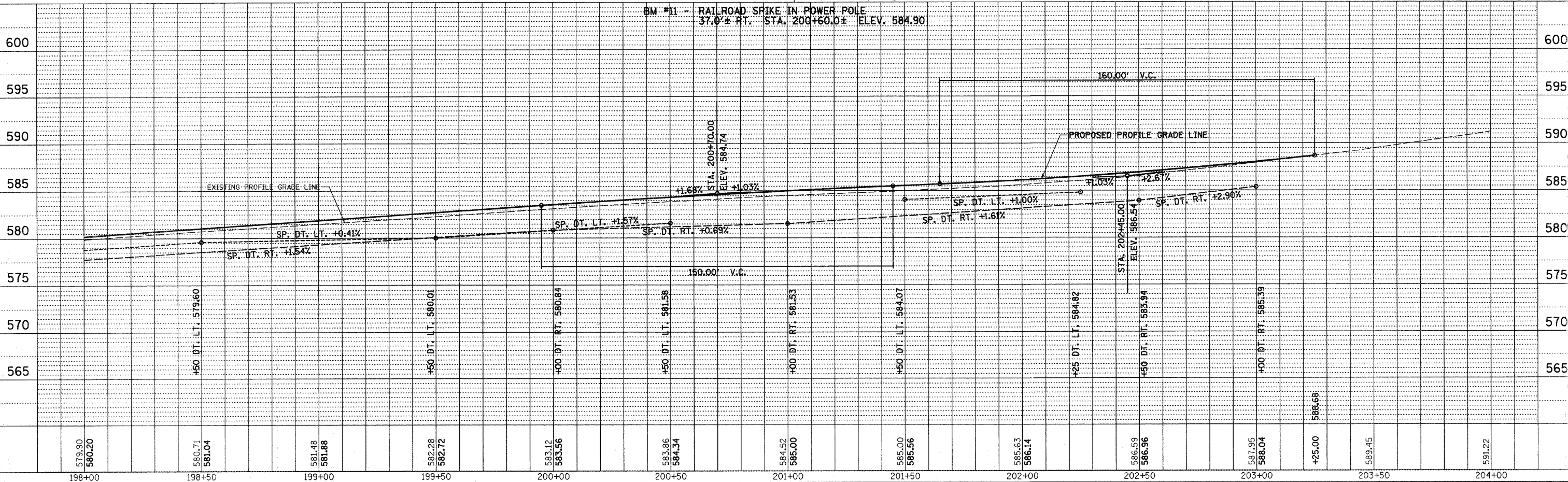
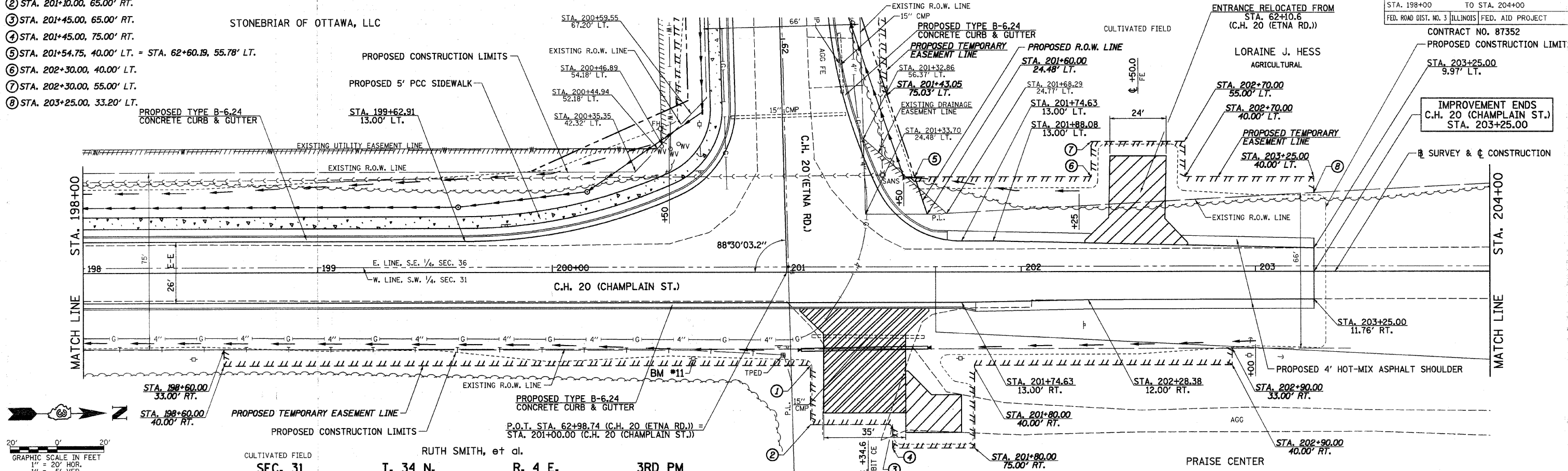
SEC. 36 T. 34 N. R. 3 E. 3RD PM

RTE. NO.	SECTION	COUNTY	TOTAL SHEETS	SHEET NO.
CH 2006-00275-00-PV	LOGSALLE	ILLINOIS	218	54

STA. 198+00 TO STA. 204+00  
FED. ROAD DIST. NO. 3 ILLINOIS FED. AID PROJECT

CONTRACT NO. 87352  
PROPOSED CONSTRUCTION LIMITS

IMPROVEMENT ENDS  
C.H. 20 (CHAMPLAIN ST.)  
STA. 203+25.00



DATE	BY

PLAN SURVEYED, PLOTTED, CHECKED, ALIGNED, REVISIONS, RT. OF WAY CHECKED, NOTE BOOK NO., FILE NAME

DATE	BY

PROFILE SURVEYED, PLOTTED, CHECKED, B.M. NOTED, STRUCTURE, NOTATING, CPVD, NOTE BOOK NO.