

PARCEL 47
PRAYSE CENTER

TOTAL HOLDING = 15.016 Ac.±
TEMPORARY EASEMENT = 0.079 Ac.±
PURPOSE: DRIVE CONSTRUCTION, GRADING & SHAPING

CONTRACT NO. 87352

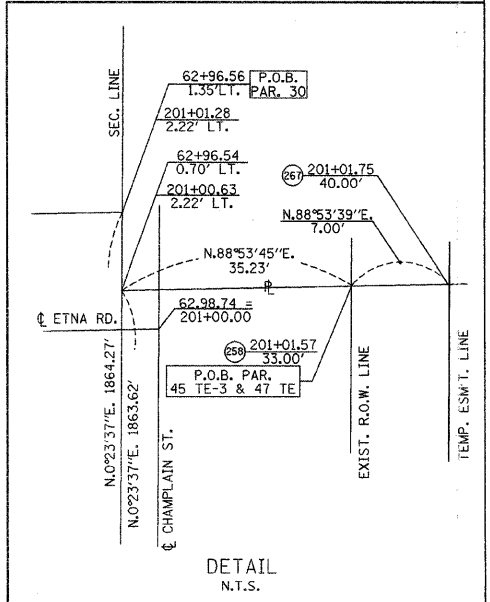
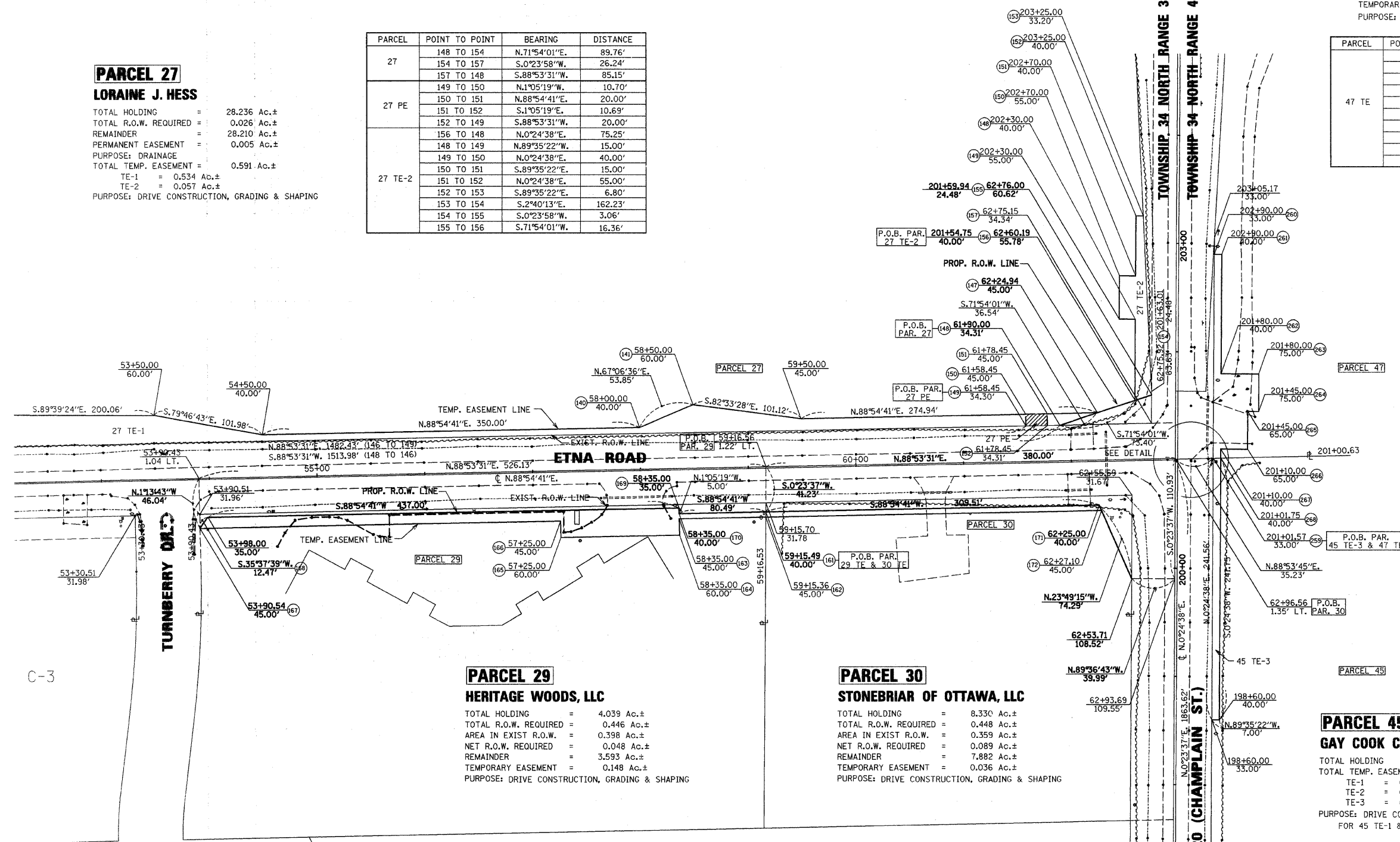
PARCEL 27

LORAIN J. HESS

TOTAL HOLDING = 28.236 Ac.±
TOTAL R.O.W. REQUIRED = 0.026 Ac.±
REMAINDER = 28.210 Ac.±
PERMANENT EASEMENT = 0.005 Ac.±
PURPOSE: DRAINAGE
TOTAL TEMP. EASEMENT = 0.591 Ac.±
TE-1 = 0.534 Ac.±
TE-2 = 0.057 Ac.±
PURPOSE: DRIVE CONSTRUCTION, GRADING & SHAPING

PARCEL	POINT TO POINT	BEARING	DISTANCE
27	148 TO 154	N.71°54'01"E	89.76'
	154 TO 157	S.0°23'58"W	26.24'
	157 TO 148	S.88°53'31"W	85.15'
27 PE	149 TO 150	N.1°05'19"W	10.70'
	150 TO 151	N.88°54'41"E	20.00'
	151 TO 152	S.1°05'19"E	10.69'
	152 TO 149	S.88°53'31"W	20.00'
	156 TO 148	N.0°24'38"E	75.25'
	148 TO 149	N.89°35'22"W	15.00'
27 TE-2	149 TO 150	N.0°24'38"E	40.00'
	150 TO 151	S.89°35'22"E	15.00'
	151 TO 152	N.0°24'38"E	55.00'
	152 TO 153	S.89°35'22"E	6.80'
	153 TO 154	S.2°40'13"E	162.23'
	154 TO 155	S.0°23'58"W	3.06'
	155 TO 156	S.71°54'01"W	16.36'
	156 TO 148	N.0°24'38"E	75.25'

PARCEL	POINT TO POINT	BEARING	DISTANCE
47 TE	259 TO 260	N.0°24'38"E	188.44'
	260 TO 261	S.89°35'22"E	7.00'
	261 TO 262	S.0°24'38"W	110.00'
	262 TO 263	S.89°35'22"E	35.00'
	263 TO 264	S.0°24'38"W	35.00'
	264 TO 265	N.89°35'22"W	10.00'
	265 TO 266	S.0°24'38"W	35.00'
	266 TO 267	N.89°35'22"E	25.00'
	267 TO 268	S.0°24'38"W	8.25'
	268 TO 259	S.88°53'39"W	7.00'



PARCEL 29

HERITAGE WOODS, LLC

TOTAL HOLDING = 4.039 Ac.±
TOTAL R.O.W. REQUIRED = 0.446 Ac.±
AREA IN EXIST R.O.W. = 0.398 Ac.±
NET R.O.W. REQUIRED = 0.048 Ac.±
REMAINDER = 3.593 Ac.±
TEMPORARY EASEMENT = 0.148 Ac.±
PURPOSE: DRIVE CONSTRUCTION, GRADING & SHAPING

PARCEL 30

STONEBRIAR OF OTTAWA, LLC

TOTAL HOLDING = 8.330 Ac.±
TOTAL R.O.W. REQUIRED = 0.448 Ac.±
AREA IN EXIST R.O.W. = 0.359 Ac.±
NET R.O.W. REQUIRED = 0.089 Ac.±
REMAINDER = 7.882 Ac.±
TEMPORARY EASEMENT = 0.036 Ac.±
PURPOSE: DRIVE CONSTRUCTION, GRADING & SHAPING

PARCEL 45

GAY COOK CZOPEK, et al.

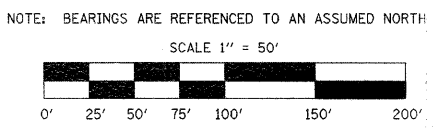
TOTAL HOLDING = 208.037 Ac.±
TOTAL TEMP. EASEMENT = 0.142 Ac.±
TE-1 = 0.046 Ac.±
TE-2 = 0.051 Ac.±
TE-3 = 0.039 Ac.±
PURPOSE: DRIVE CONSTRUCTION, GRADING & SHAPING
FOR 45 TE-1 & 45 TE-2 SEE SHEET 8

PARCEL	POINT TO POINT	BEARING	DISTANCE
29 TE	161 TO 162	S.0°23'37"W	5.00'
	162 TO 163	S.88°54'41"W	80.36'
	163 TO 164	S.1°05'19"E	15.00'
	164 TO 165	S.88°54'41"W	120.00'
	165 TO 166	N.1°05'19"W	15.00'
	166 TO 167	S.88°54'41"W	334.46'
	167 TO 168	N.35°37'39"E	12.47'
	168 TO 169	N.88°54'41"E	437.00'
	169 TO 170	S.1°05'19"E	5.00'
	170 TO 161	N.88°54'41"E	80.49'

PARCEL	POINT TO POINT	BEARING	DISTANCE
30 TE	161 TO 171	N.88°54'41"E	309.51'
	171 TO 172	S.23°49'15"E	5.42'
	172 TO 162	S.88°54'41"W	311.73'
	162 TO 161	N.0°23'37"E	5.00'

I VINCENT D. BRANDOW, HEREBY CERTIFY THAT I AM A PROFESSIONAL LAND SURVEYOR OF THE STATE OF ILLINOIS, THAT THE SURVEY OF PROPOSED ETNA ROAD & CO. HWY 20 WAS MADE BY RENWICK & ASSOCIATES, INC. UNDER MY DIRECTION, AND THAT THE SURVEY IS TRUE AND COMPLETE AS SHOWN TO THE BEST OF MY KNOWLEDGE AND BELIEF, THAT ALL MONUMENTS AND MARKS ARE OF THE CHARACTER AND OCCUPY THE POSITION SHOWN THEREON, AND ARE SUFFICIENT TO ENABLE THE SURVEY TO BE RETRACED, THIS PROFESSIONAL SERVICE CONFORMS TO THE CURRENT ILLINOIS MINIMUM STANDARDS FOR A BOUNDARY SURVEY.

DATE: _____
ILLINOIS PROFESSIONAL LAND SURVEYOR
NO. 2655
11-30-08
EXPIRATION DATE



RIGHT OF WAY PLANS	
ROUTE	C.H.20 (ETNA RD. & CHAMPLAIN ST.)
SECTION	06-00275-00-PV
PROJECT	
COUNTY	LASALLE
JOB NUMBER	C-93-063-07
STATION	53+50 TO 63+00
SHEET	5 OF 8 SCALE 1" = 50'