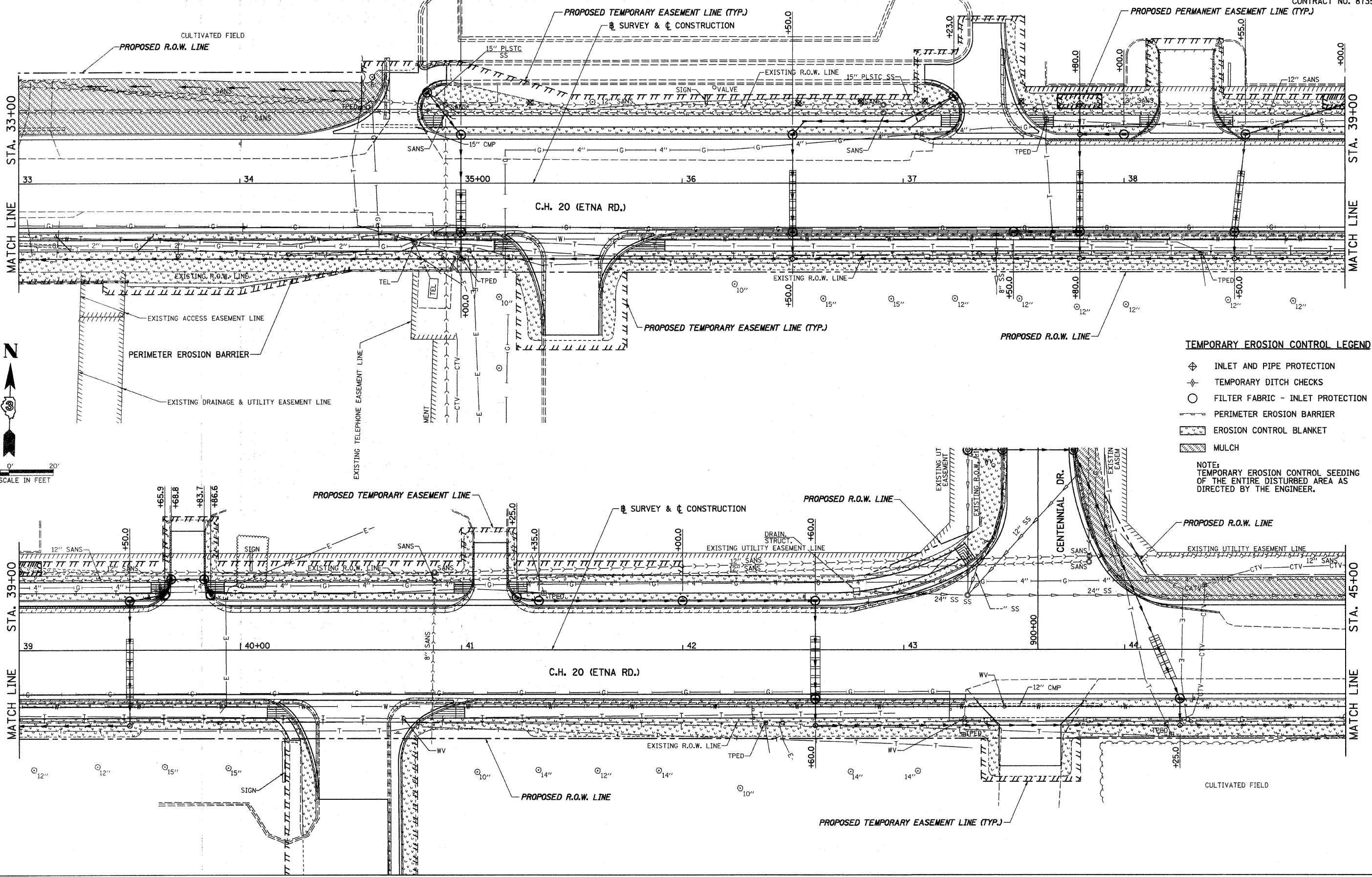


RTE. NO.	SECTION	COUNTY	TOTAL SHEETS	SHEET NO.
CH 2006-00275-00-PV		LaSALLE	218	104
STA. 33+00		TO STA. 45+00		
FED. ROAD DIST. NO. 3		ILLINOIS	FED. AID PROJECT	

CONTRACT NO. 87352



TEMPORARY EROSION CONTROL LEGEND

- ◆ INLET AND PIPE PROTECTION
- ◇ TEMPORARY DITCH CHECKS
- FILTER FABRIC - INLET PROTECTION
- ▬ PERIMETER EROSION BARRIER
- ▨ EROSION CONTROL BLANKET
- ▩ MULCH

NOTE: TEMPORARY EROSION CONTROL SEEDING OF THE ENTIRE DISTURBED AREA AS DIRECTED BY THE ENGINEER.