

CONTRACT NO. 87352

REMOVAL NOTES: (REMOVE EXISTING TRAFFIC SIGNAL EQUIPMENT)

THE FOLLOWING EXISTING TRAFFIC SIGNAL EQUIPMENT SHALL BE REMOVED BY THE CONTRACTOR AND SHALL REMAIN THE PROPERTY OF THE CITY OF OTTAWA. THE CONTRACTOR SHALL SAFELY STORE AND DELIVER THE REMOVED EQUIPMENT TO THE ABOVE AGENCY AS PER THE TRAFFIC SIGNAL SPECIFICATIONS:

- 4 EACH TRAFFIC SIGNAL HEAD, 1-FACE, 3-SECTION, MAST ARM MOUNTED
- 5 EACH TRAFFIC SIGNAL HEAD, 1-FACE, 5-SECTION, BRACKET MOUNTED
- 6 EACH TRAFFIC SIGNAL HEAD, 1-FACE, 5-SECTION, MAST ARM MOUNTED
- 4 EACH PEDESTRIAN SIGNAL HEAD, 2-SECTION, BRACKET MOUNTED
- 4 EACH PEDESTRIAN PUSH-BUTTON DETECTOR
- 2 EACH STEEL MAST ARM ASSEMBLY AND POLE (2 @ 32')
- 2 EACH STEEL COMBINATION MAST ARM ASSEMBLY AND POLE (2 @ 32')
- 3 EACH TRAFFIC SIGNAL POST, 16 FT.
- 1 EACH CONTROLLER CABINET AND CONTENTS, COMPLETE

THE FOLLOWING ITEMS SHALL BE REMOVED BY THE CONTRACTOR AND SHALL BE DISPOSED OF BY THEM OUTSIDE THE RIGHT-OF-WAY AT THEIR EXPENSE. THE SALVAGE VALUE OF THE REMOVED EQUIPMENT SHALL BE REFLECTED IN THE CONTRACT BID PRICE:

- 3 EACH CONCRETE FOUNDATION, TYPE A
- 1 EACH CONCRETE FOUNDATION, TYPE D
- 4 EACH CONCRETE FOUNDATION, TYPE E
- 3 EACH HANDHOLE
- 1 EACH SERVICE INSTALLATION, CABINET MOUNTED

REMOVAL OF EXISTING LIGHTING UNIT, SALVAGE

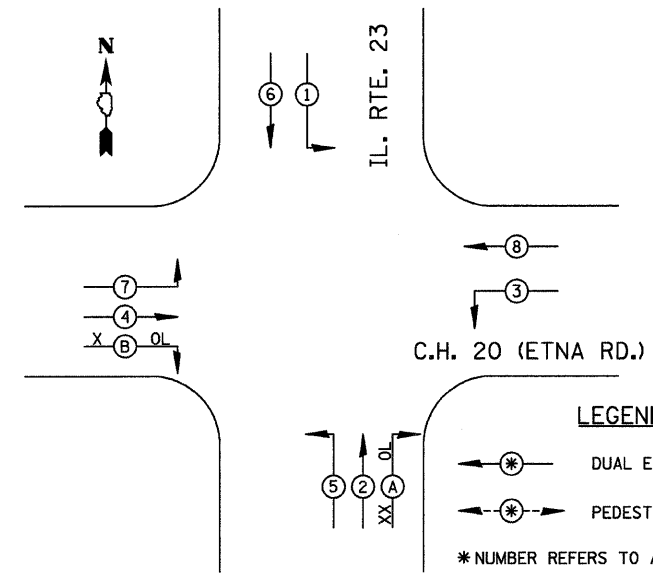
THE FOLLOWING EXISTING LIGHTING EQUIPMENT SHALL BE REMOVED BY THE CONTRACTOR AND SHALL REMAIN THE PROPERTY OF THE ILLINOIS DEPARTMENT OF TRANSPORTATION. THE CONTRACTOR SHALL DELIVER THE REMOVED EQUIPMENT TO THE IDOT FACILITIES LOCATED AT 700 E. NORRIS DR., OTTAWA IN ACCORDANCE WITH SECTION 842.04 OF THE STANDARD SPECIFICATIONS.

- 2 EACH LUMINAIRE, SODIUM VAPOR, 250 WATT

TEMPORARY CABLE DIAGRAM LEGEND

- TEMPORARY TRAFFIC SIGNAL SECTION OR PEDESTRIAN SIGNAL SECTION 12" (300 mm)
- TEMPORARY CONTROLLER CABINET
- TEMPORARY SERVICE INSTALLATION
- INDICATES NUMBER OF CONDUCTORS IN CABLE, ALL CONDUCTORS TO BE NUMBER 14 AWG WIRE UNLESS OTHERWISE NOTED
- EMERGENCY VEHICLE LIGHT DETECTOR
- CONFIRMATION BEACON
- VEHICLE DETECTOR, INDUCTION LOOP
- PEDESTRIAN PUSHBUTTON DETECTOR
- 12" (300 mm) PEDESTRIAN SIGNAL SECTION
- MICROWAVE VEHICLE SENSOR

CONTROLLER SEQUENCE



LEGEND

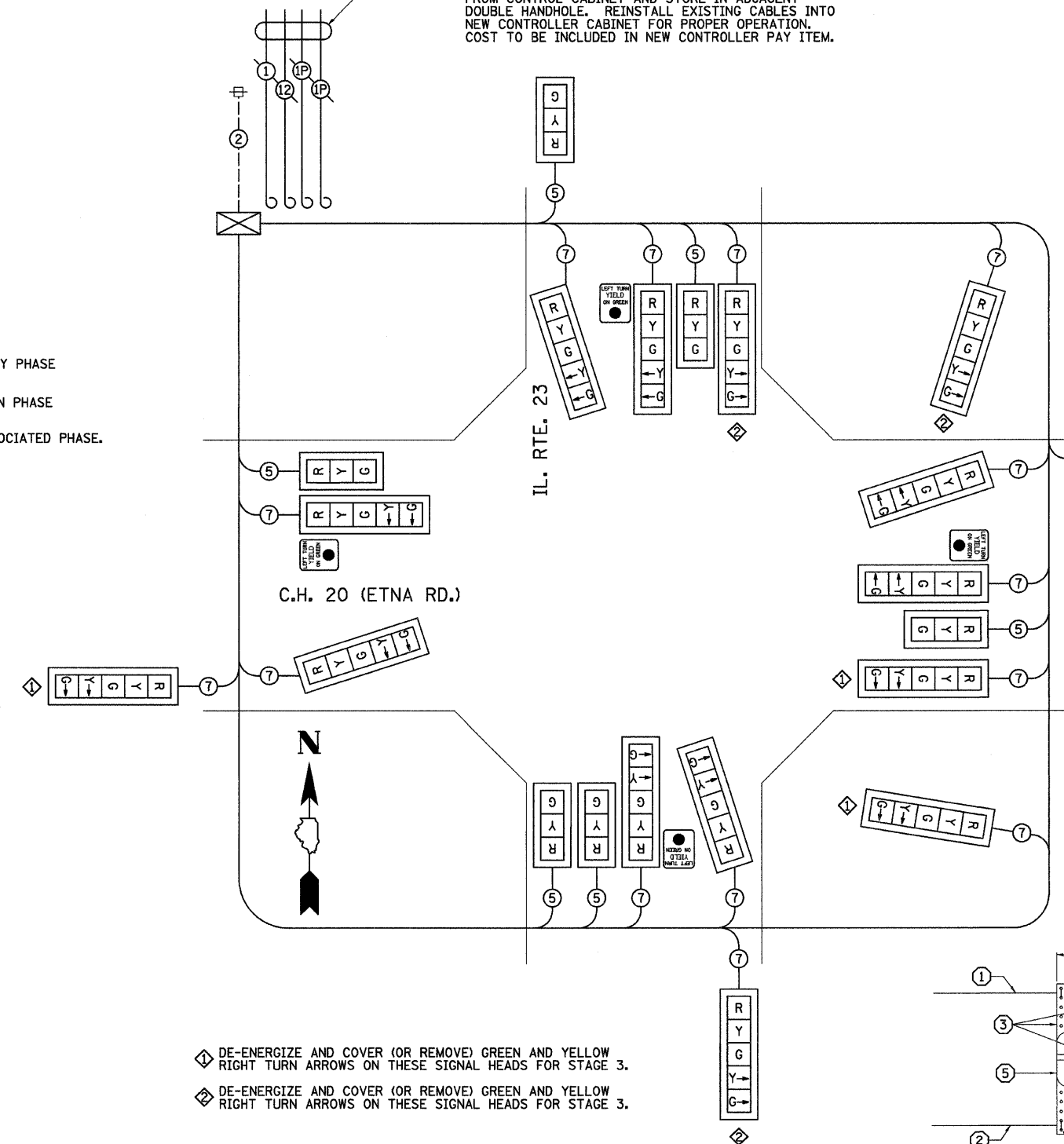
- DUAL ENTRY PHASE
- PEDESTRIAN PHASE

* NUMBER REFERS TO ASSOCIATED PHASE.

PROPOSED TEMPORARY PHASE DESIGNATION DIAGRAM

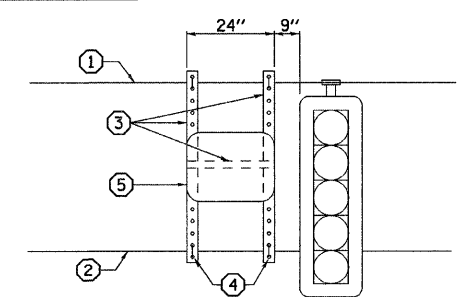
- NOTE: REMOVE "LEFT TURN YIELD ON GREEN BALL" SIGNS FOR THE EASTBOUND AND WESTBOUND C.H. 20 (ETNA RD.) APPROACHES FOR STAGES 2 & 3 OPERATION.
- X REVISE THE CONTROLLER SEQUENCE FOR STAGES 2 & 3 BY MAKING PHASES 3+8, AND 4+7 SINGLE ENTRY ONLY; RETAIN OVERLAP B FOR EASTBOUND TRAFFIC FOR STAGE 2 ONLY.
 - XX REMOVE OVERLAP A FOR NORTHBOUND TRAFFIC DURING STAGE 3.

NOTE: DURING STAGE CONSTRUCTION AND TO FACILITATE REPLACEMENT OF NEW CONTROLLER FOUNDATION, DISCONNECT FIBER OPTIC CABLE AND TRACER CABLE, AND TWO 1-PAIR LOOP DETECTOR LEAD-IN CABLES FROM CONTROL CABINET AND STORE IN ADJACENT DOUBLE HANDHOLE. REINSTALL EXISTING CABLES INTO NEW CONTROLLER CABINET FOR PROPER OPERATION. COST TO BE INCLUDED IN NEW CONTROLLER PAY ITEM.



- DE-ENERGIZE AND COVER (OR REMOVE) GREEN AND YELLOW RIGHT TURN ARROWS ON THESE SIGNAL HEADS FOR STAGE 3.
- DE-ENERGIZE AND COVER (OR REMOVE) GREEN AND YELLOW RIGHT TURN ARROWS ON THESE SIGNAL HEADS FOR STAGE 3.

PROPOSED TEMPORARY CABLE PLAN
"ALL STAGES"



SIGN MOUNTING DETAIL - SPAN WIRE

- 1 SPAN WIRE
- 2 TETHER WIRE
- 3 TELESCOPING METAL SIGN POST 1" SQUARE SECTION 1093.01(GX3) OF STANDARD SPECIFICATIONS
- 4 HIGH STRENGTH STEEL U-BOLTS, TOP & BOTTOM SECTION 1006.08, OF STANDARD SPECIFICATIONS
- 5 REGULATORY SIGN AS SPECIFIED IN PLANS - 24"x30"

TEMPORARY SIGNAL ELECTRICAL LOAD CHART			
IL. RTE. 23			
SIGNAL SECTION	NUMBER	WATTAGE EACH	BURN TIME %
RED	11	17	62
YELLOW	11	25	5
GREEN	11	15	33
YELLOW ARROW	7	12	5
GREEN ARROW	7	12	5
C.H. 20 (ETNA RD.)			
SIGNAL SECTION	NUMBER	WATTAGE EACH	BURN TIME %
RED	10	17	67
YELLOW	10	25	5
GREEN	10	15	28
YELLOW ARROW	7	12	5
GREEN ARROW	7	12	5
TRAFFIC SIGNAL			
ITEM	NUMBER	WATTAGE EACH	BURN TIME %
CONTROLLER	1	100	100
LOOP DETECTORS	0	0	0

ENERGY COSTS TO: CITY OF OTTAWA
EXISTING SERVICE INSTALLATION