

SUMMARY OF QUANTITIES

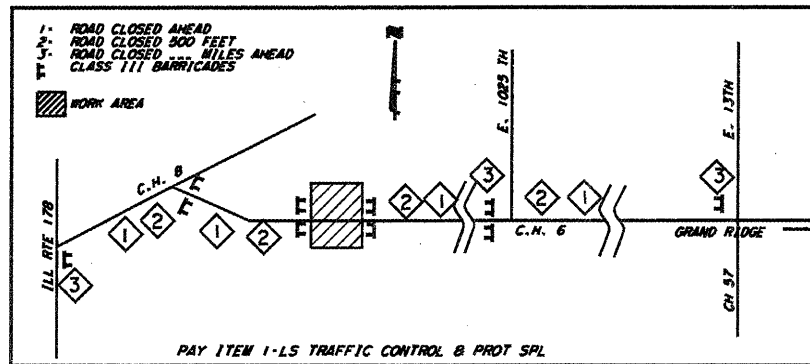
Pay Item*	Item	Unit	Quantity
20100110	TREE REMOVAL (6-15 UNITS DIAMETER)	UNIT	22
20100210	TREE REMOVAL (OVER 15 UNITS DIAMETER)	UNIT	27
20101400	NITROGEN FERTILIZER NUTRIENT	POUND	59
20101500	PHOSPHORUS FERTILIZER NUTRIENT	POUND	59
20101600	POTASSIUM FERTILIZER NUTRIENT	POUND	59
20200100	EARTH EXCAVATION	CU YD	951
20400800	FURNISHED EXCAVATION	CU YD	1260
20700110	POROUS GRANULAR EMBANKMENT	TON	1300
21101615	TOPSOIL FURNISH AND PLACE 4"	SO YD	3180
25000200	SEEDING CLASS 2	ACRE	0.66
25100115	MULCH METHOD 2	ACRE	0.66
28000300	TEMPORARY DITCH CHECKS	EACH	19
28000400	PERIMETER EROSION BARRIER	FOOT	100
28000500	INLET AND PIPE PROTECTION	EACH	2
28100809	STONE DUMPED RIP CLASS A5	TON	220
28200200	FILTER FABRIC	SO YD	285
28300495	AGGREGATE DITCH, SPECIAL	SO YD	72
35100100	AGGREGATE BASE COURSE TYPE A	TON	1520
35501312	HOT-MIX ASPHALT BASE COURSE 7"	SO YD	1175
40600625	LEVELING BINDER (MACHINE METHOD) N50	TON	22
40600982	HOT-MIX ASPHALT SURFACE REMOVAL - BUTT JOINT	SO YD	122
40603310	HOT-MIX ASPHALT SURFACE COURSE, MIX "C", N50	TON	146
44000196	HOT-MIX ASPHALT SURFACE REMOVAL, SPECIAL	SO YD	1100
48101200	AGGREGATE SHOULDERS TYPE B	TON	165
50100100	REMOVE EXISTING STRUCTURES	EACH	1
50200400	ROCK EXCAVATION FOR STRUCTURE	CU YD	50
50300225	CONCRETE STRUCTURES	CU YD	56
50800105	REINFORCEMENT BARS	POUND	2890
51500100	NAME PLATES	EACH	1
54200223	PIPE CULVERTS CLASS D TYPE 1 18"	FOOT	40
63000130	STEEL PLATE BEAM GUARDRAIL TYPE A, SPECIAL	FOOT	362.5
63200310	GUARDRAIL REMOVAL	FOOT	333
66600115	FURNISH AND ERECT RIGHT OF WAY MARKERS, SPECIAL	EACH	6
67100100	MOBILIZATION	L SUM	1
70101800	TRAFFIC CONTROL AND PROTECTION, SPECIAL	L SUM	1
70300100	SHORT-TERM PAVEMENT MARKING	FOOT	80
*3002019	THREE SIDED PRECAST CONCRETE STRUCTURE 28' X 11'	FT	54
LR631020	TRAFFIC BARRIER TERMINAL TYPE 1	EACH	4

HMA MIXTURE REQUIREMENTS

LOCATION*	09-00648-00-BR		
MAX % RAP ALLOWABLE**	30%	30%	30%
MIXTURE USE*	HMA BASE COURSE	LEVEL BINDER MACHINE METHOD	HMA SURF. COURSE
PG GRADE*	PG64-22	PG64-22	PG64-22
DESIGN AIR VOIDS*	4.0% @ N50	4.0% @ N50	4.0% @ N50
MIXTURE COMPOSITION*	1L-19.0	1L-9.5	1L-9.5
FRICTION AGGREGATE*			MIXTURE C
PLANT CONTROL*	LR 1030	LR 1030	LR 1030

** IF RAP OPTIONS IS SELECTED, THE ASPHALT CEMENT GRADE MAY NEED TO BE ADJUSTED. THIS WILL BE DETERMINED BY THE ENGINEER.

PROPOSED TRAFFIC PLAN



SUPERELEVATION SCHEDULE

STA. TO STA.	STA. TO STA.
NORMAL CROWN	11+81.73
TRANSITION SUPER	11+81.73-13+73.73
FULL SUPER 0.08'	13+73.73-17+75.09
TRANSITION SUPER	17+75.09-19+67.09
NORMAL CROWN	19+67.09
NORMAL CROWN	21+17.43-22+85.43
TRANSITION SUPER	22+85.43-26+32.95
FULL SUPER 0.08'	26+32.95-28+00.43
TRANSITION SUPER	28+00.43
NORMAL CROWN	28+00.43

GUARDRAIL REMOVAL SCHEDULE

STA TO STA	LOC	REMOVE SPBGR
16+31 - 18+24	LT	93.0
18+50 - 19+24	LT	75.0
16+34 - 18+24	RT	90.0
18+30 - 19+25	RT	75.0
TOTAL		333.0

GUARDRAIL SCHEDULE

STA TO STA	LOC	SPBGR TY A	TOT TI
17+00.0 - 17+25.0	LT		1 EACH
17+25.0 - 19+20.0	LT	200	
19+25.0 - 19+50.0	LT		1 EACH
17+37.5 - 17+62.5	RT		1 EACH
17+62.5 - 19+25.0	RT	162.5	
19+25.0 - 19+50.0	RT		1 EACH
TOTAL		362.5	4 EACH

EROSION CONTROL SCHEDULE

STA TO STA	LOC	INLET PBPROT	PER EROS BAR	TEMP DIT. CKS
14+00 - 22+00	LT			9
14+00 - 22+00	RT			10
16+25 - 16+75	30' LT	1.0		
16+75 - 17+50	34' RT	1.0		
17+50 - 18+00	LT&RT		100	
TOTAL		2.0 EA	100.0	19

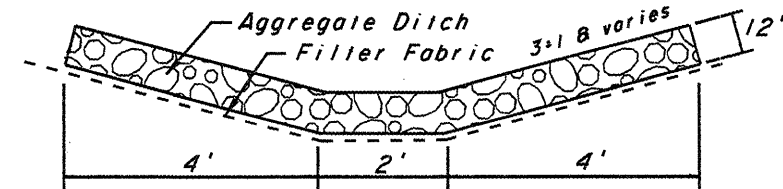
TREE REMOVAL SCHEDULE

STA	LOC	6-15	OVER 15
17+00	LT	6	
17+18	LT	7	
17+40	LT	8	
18+75	RT		27
TOTAL		22	27

ROW MARKER SCHEDULE

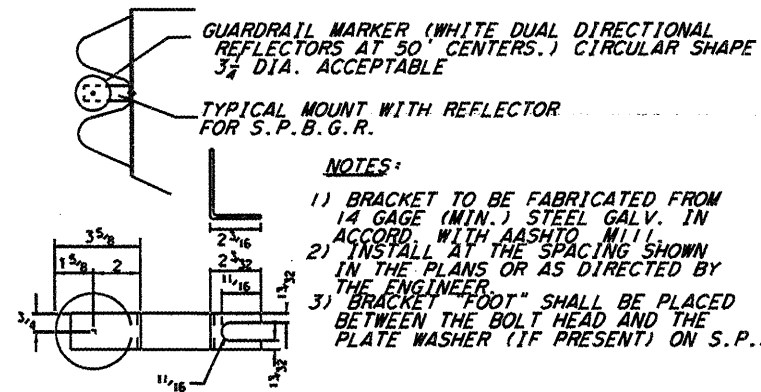
STA	LOC	NUMBER
16+16	45' LT	1 EACH
16+16	60' RT	1 EACH
18+46	60' RT	1 EACH
20+16	50' LT	1 EACH
20+91	60' RT	1 EACH
20+91	40' RT	1 EACH
TOTAL		6 EACH

ROUTE NUMBER	SECTION	COUNTY	TOTAL SHEETS	SHEET NO.
1281	09-00648-00-BR	LASALLE	12	3
FED. ROAD DIST. NO.7		ILLINOIS	PROJECT ERS-1281(103)	
JOB NO. C-93-064-08		CONTRACT NO.87367		



AGGREGATE DITCH DETAIL

Sta 19+60-Sta 20+00 L1 & R1



GUARDRAIL REFLECTOR DETAIL

8- REQUIRED @ 50' CTS INCIDENTAL TO COST OF SPBGR TY A SPL

SUMMARY OF QUANTITIES AND MISCELLANEOUS DETAILS