

INDEX OF SHEETS

Sheet No.	Description
1	COVER SHEET
2	TYPICAL CROSS SECTION AND DETAILS
3	DETAILS & SCHEDULES

STANDARDS

701301-03	TRAFFIC CONTROL
701306-02	TRAFFIC CONTROL
701901-01	TRAFFIC CONTROL

SUMMARY OF QUANTITIES

CODE NO.	DESCRIPTION	QUANTITY	UNIT
* 20200100	EARTH EXCAVATION	23	CU YD
* 35100100	AGGREGATE BASE CSE. TYPE A	47	TON
* 40600100	BITUMINOUS MATERIALS (PRIME COAT)	3357	GALLON
40600300	AGGREGATE (PRIME COAT)	69	TON
40600625	LEVELING BINDER (MACHINE METHOD), N50	1858	TON
40600982	HOT-MIX ASPHALT SURFACE REMOVAL - BUTT JOINT	268	SQ YD
40600990	TEMPORARY RAMP	28	SQ YD
* 40603310	HOT-MIX ASPHALT SURFACE CSE. MIX "C", N50	2348	TON
40800050	INCIDENTAL HOT-MIX ASPHALT SURFACING	90	TON
* 48101200	AGGREGATE SHOULDERS, TYPE B	1717	TON
67100100	MOBILIZATION	1	L SUM
* 70100460	TRAFFIC CONTROL AND PROTECTION, STD 701306	1	L SUM
* 70300100	SHORT-TERM PAVEMENT MARKING	2969	FOOT

Construction Code I000

\* Special Provisions

CONTRACT NO. 87386

J.U.L.I.E. 1-800-892-0123

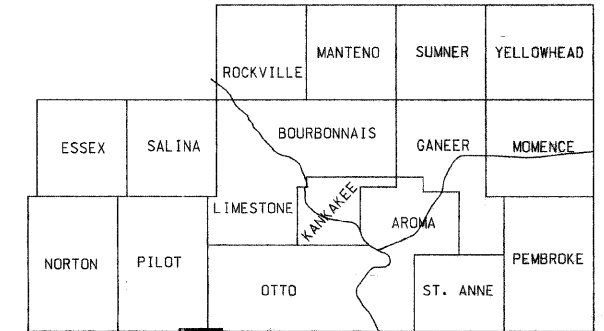
STATE OF ILLINOIS  
DEPARTMENT OF TRANSPORTATION  
COUNTY OF KANKAKEE  
DEPARTMENT OF HIGHWAYS  
PLANS FOR PROPOSED  
FEDERAL AID SECONDARY PROJECT  
SECTION 04-00171-01-RS  
F.A.S. 1322 (C.H.37) PROJECT RS-1322(123)  
JOB NO. C-93-068-09

F.A.S. ROUTE NO.	SEC.	COUNTY	NO. SHEETS	SHEET NO.
1327	*	Kankakee	3	1

ILLINOIS PROJECT RS-1322(123) CONTRACT NO. 87386

\* 04-00171-01-RS

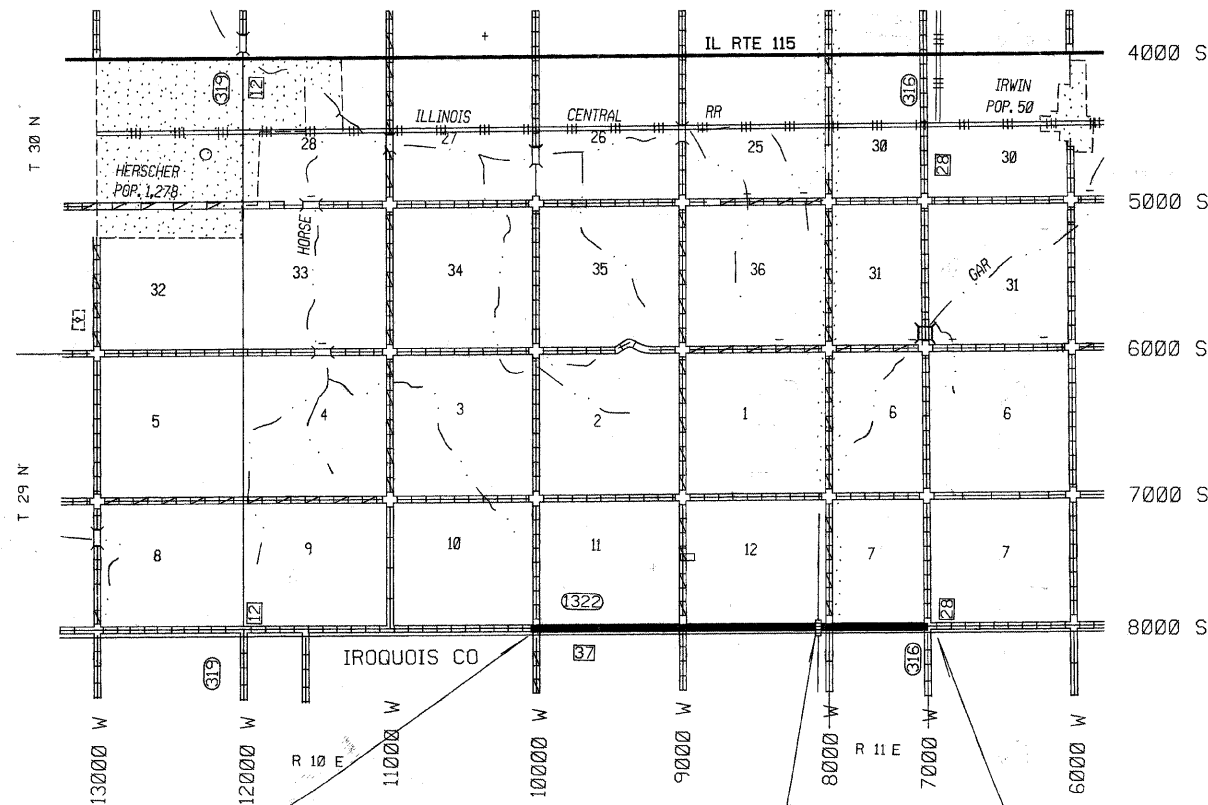
KANKAKEE COUNTY



PROJECT LOCATION



LOCATION MAP



STA. 362+61  
CONSTRUCTION ENDS  
(STA. 361+88 =  $\phi$  10000W RD)

STA. 307+61 TO STA. 307+81  
STRUCTURE GAP

STA. 213+85  
CONSTRUCTION STARTS  
(STA. 213+45 =  $\phi$  7000W RD)

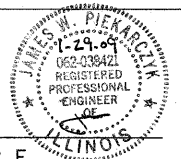
GROSS LENGTH = 14,876 LIN FT = 2.82 MILES

THE ACCEPTANCE OF THIS PROJECT IS BASED ON THE MINIMUM DESIGN CRITERIA FOR LOCAL AGENCY PAVEMENT PRESERVATION POLICY (LAPP) PROJECTS

CLASS III ROAD  
2008 CURRENT A.D.T. = 467  
2012 DESIGN A.D.T. = 486  
DESIGN SPEED = 55 M.P.H.  
ROADWAY CLASSIFICATION = COLLECTOR

STATE OF ILLINOIS  
DEPARTMENT OF TRANSPORTATION  
DIVISION OF HIGHWAYS

Approved 1-29 2009



JAMES W. PIEKARCZYK, P.E.  
KANKAKEE COUNTY ENGINEER

Passed 02-09 2009

*Kenneth R. Lang*  
KENNETH R. LANG  
BUREAU CHIEF, LOCAL ROADS & STREETS

Releasing for Bid Based on Limited Review 02-09 2009

*George Ryan*  
GEORGE RYAN  
REGION 2 ENGINEER