

INDEX OF SHEETS

Sheet No.	Description
1	COVER SHEET
2	TYPICAL CROSS SECTION AND DETAILS
3	DETAILS & SCHEDULES

STANDARDS

701301-03	TRAFFIC CONTROL
701306-02	TRAFFIC CONTROL
701901-01	TRAFFIC CONTROL

SUMMARY OF QUANTITIES

CODE NO.	DESCRIPTION	QUANTITY	UNIT
* 20200100	EARTH EXCAVATION	23	CU YD
* 35100100	AGGREGATE BASE CSE. TYPE A	47	TON
* 40600100	BITUMINOUS MATERIALS (PRIME COAT)	3357	GALLON
40600300	AGGREGATE (PRIME COAT)	69	TON
40600625	LEVELING BINDER (MACHINE METHOD), N50	1858	TON
40600982	HOT-MIX ASPHALT SURFACE REMOVAL - BUTT JOINT	268	SQ YD
40600990	TEMPORARY RAMP	28	SQ YD
* 40603310	HOT-MIX ASPHALT SURFACE CSE. MIX "C", N50	2348	TON
40800050	INCIDENTAL HOT-MIX ASPHALT SURFACING	90	TON
* 48101200	AGGREGATE SHOULDERS, TYPE B	1717	TON
67100100	MOBILIZATION	1	L SUM
* 70100460	TRAFFIC CONTROL AND PROTECTION, STD 701306	1	L SUM
* 70300100	SHORT-TERM PAVEMENT MARKING	2969	FOOT

Construction Code I000

\* Special Provisions

CONTRACT NO. 87386

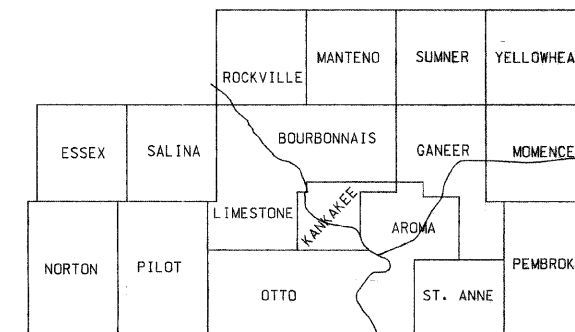
J.U.L.I.E. 1-800-892-0123

STATE OF ILLINOIS  
DEPARTMENT OF TRANSPORTATION  
COUNTY OF KANKAKEE  
DEPARTMENT OF HIGHWAYS  
PLANS FOR PROPOSED  
FEDERAL AID SECONDARY PROJECT  
SECTION 04-00171-01-RS  
F.A.S. 1322 (C.H.37) PROJECT RS-1322(123)  
JOB NO. C-93-068-09

F.A.S. ROUTE NO.	SEC.	COUNTY	NO. SHEETS	SHEET NO.
1327	*	Kankakee	3	1
ILLINOIS PROJECT RS-1322(123)			CONTRACT NO. 87386	

\* 04-00171-01-RS

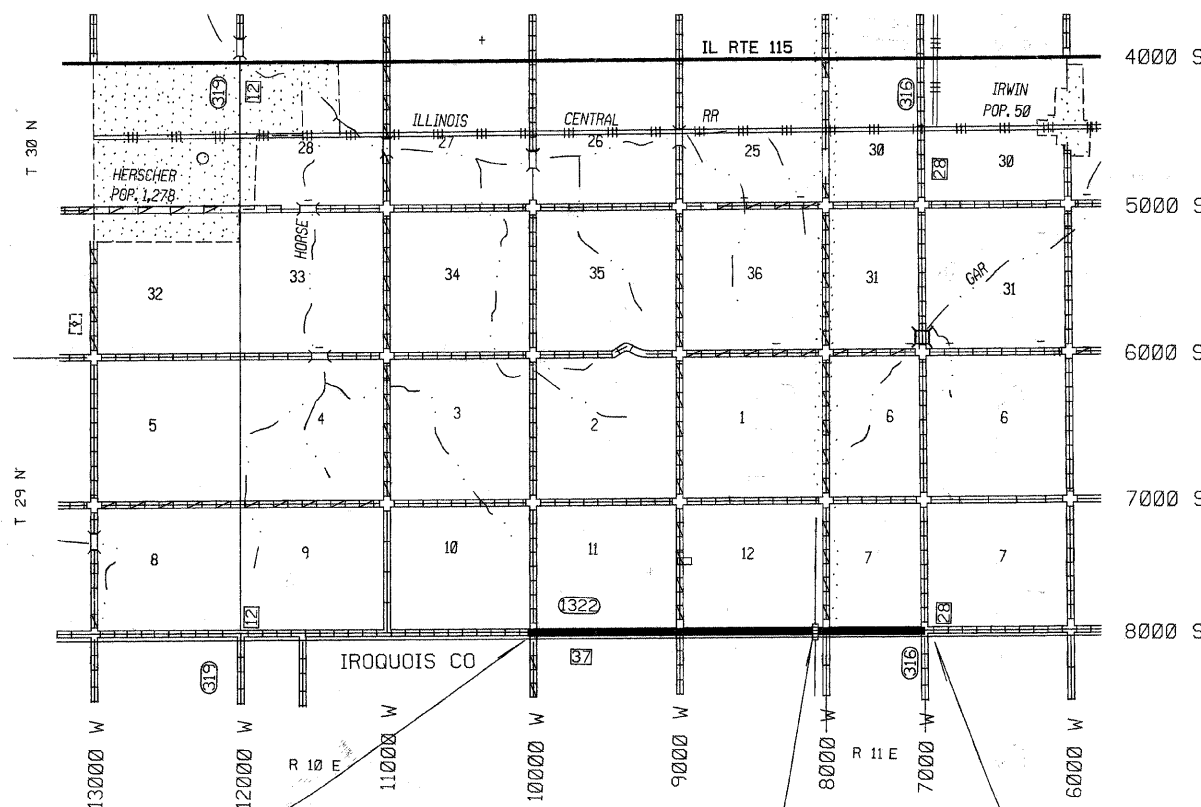
KANKAKEE COUNTY



PROJECT LOCATION



LOCATION MAP



STA. 362+61  
CONSTRUCTION ENDS  
(STA. 361+88 =  $\phi$  10000W RD)

STA. 307+61 TO STA. 307+81  
STRUCTURE GAP

STA. 213+85  
CONSTRUCTION STARTS  
(STA. 213+45 =  $\phi$  7000W RD)

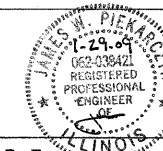
GROSS LENGTH = 14,876 LIN FT = 2.82 MILES

THE ACCEPTANCE OF THIS PROJECT IS BASED ON THE MINIMUM DESIGN CRITERIA FOR LOCAL AGENCY PAVEMENT PRESERVATION POLICY (LAPP) PROJECTS

CLASS III ROAD  
2008 CURRENT A.D.T. = 467  
2012 DESIGN A.D.T. = 486  
DESIGN SPEED = 55 M.P.H.  
ROADWAY CLASSIFICATION = COLLECTOR

STATE OF ILLINOIS  
DEPARTMENT OF TRANSPORTATION  
DIVISION OF HIGHWAYS

Approved 1-29 2009



JAMES W. PIEKARCZYK, P.E.  
KANKAKEE COUNTY ENGINEER

Passed 02-09 2009

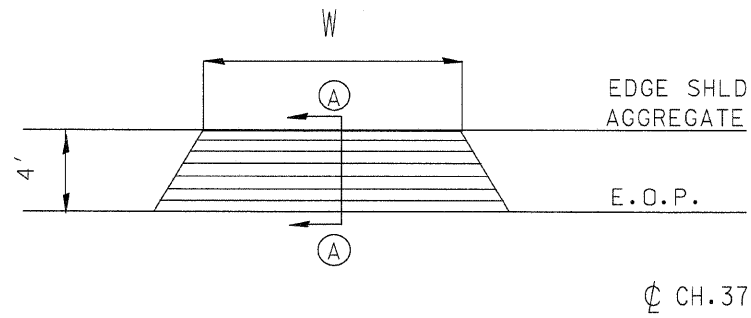
*Kenneth R. Lang*  
KENNETH R. LANG  
BUREAU CHIEF, LOCAL ROADS & STREETS

Releasing for Bid Based on Limited Review 02-09 2009

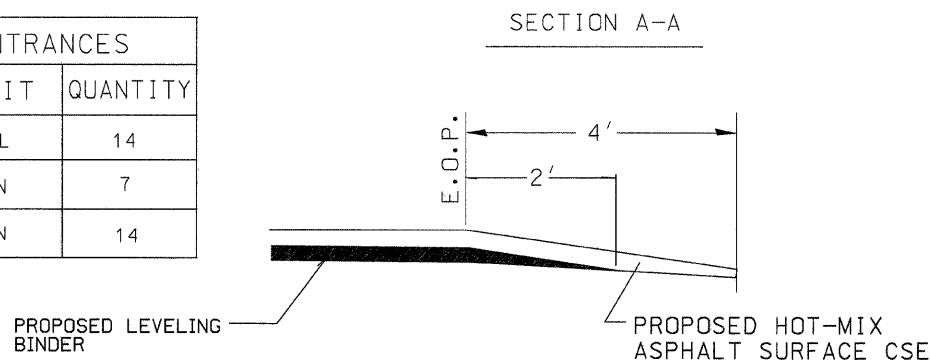
*George F. Ryan*  
GEORGE RYAN  
REGION 2 ENGINEER

# TYPICAL ENTRANCE DETAIL

W: WIDTH OF APPROACH PADS IS ESTIMATED AT 20' PER ENTRANCE. THE ACTUAL CONSTRUCTED WIDTH MAY VARY AS DIRECTED BY THE ENGINEER TO FIT THE EXISTING ENTRANCES. FIELD ENTRANCES SHALL NOT RECEIVE HOT-MIX ASPHALT SURFACING UNLESS DIRECTED BY THE ENGINEER.



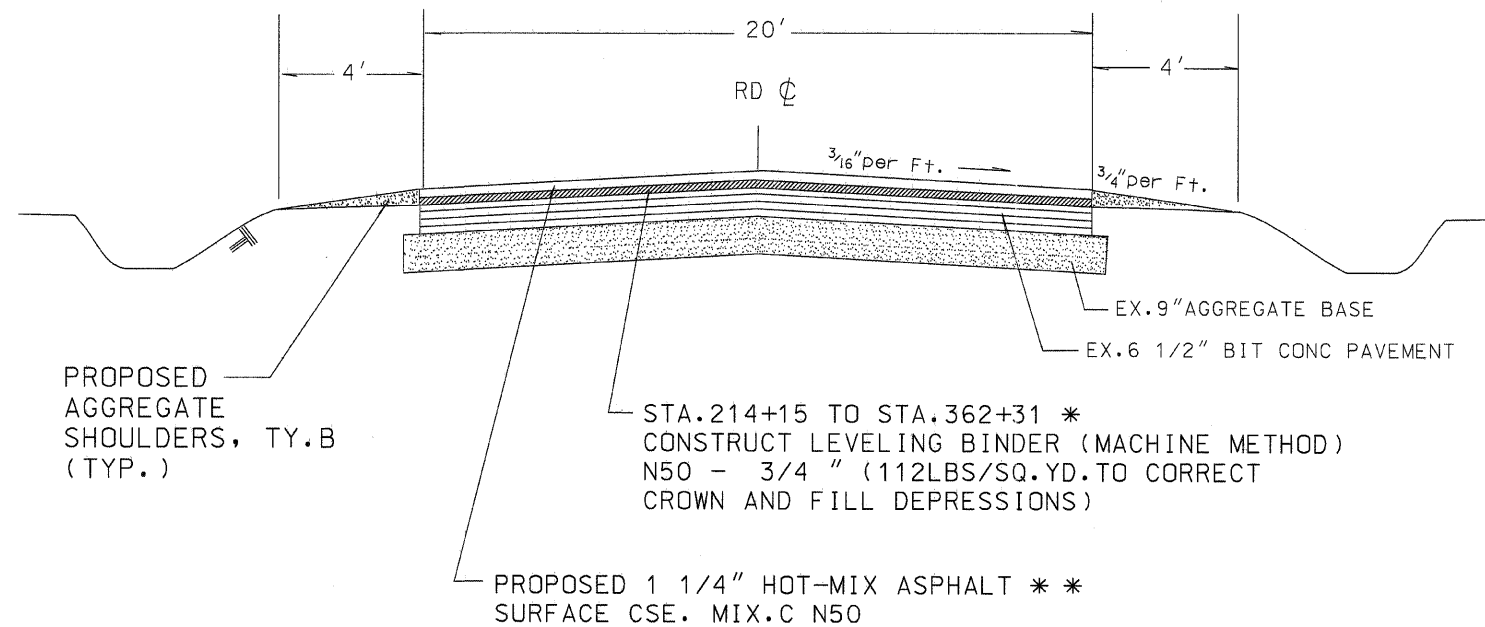
ESTIMATED QUANTITIES- 14 ENTRANCES		
ITEM	UNIT	QUANTITY
BITUMINOUS MATERIALS ( PRIME COAT )	GAL	14
LEVELING BINDER (MM) N50	TON	7
HOT-MIX ASPHALT SURFACE CSE MIX C, N50	TON	14



SECTION	COUNTY	TOTAL SHEETS	SHEET NO.
04-00171-01-RS	KANKAKEE	3	2
CONTRACT NO. 87386			

# TYPICAL CROSS SECTION

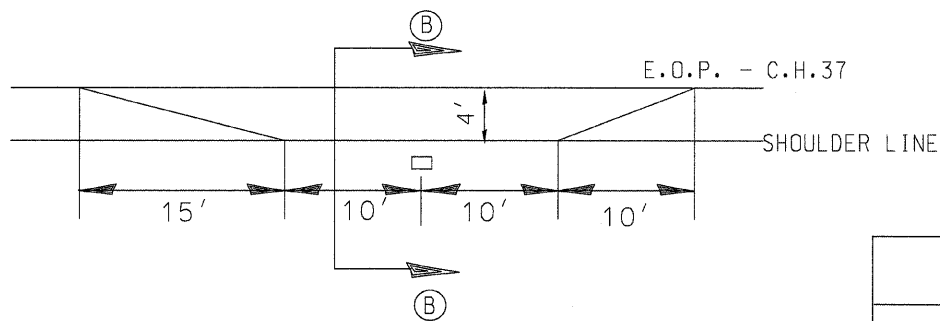
STA. 213+85 TO STA. 362+61



\* LEVELING BINDER OMISSIONS:  
STA. 307+31 TO STA. 308+11 (CULVERT LOCATION)

\* \* HMA SURFACE CSE OMISSION:  
STA. 307+61 TO STA. 307+81  
(CULVERT DECK GAP)

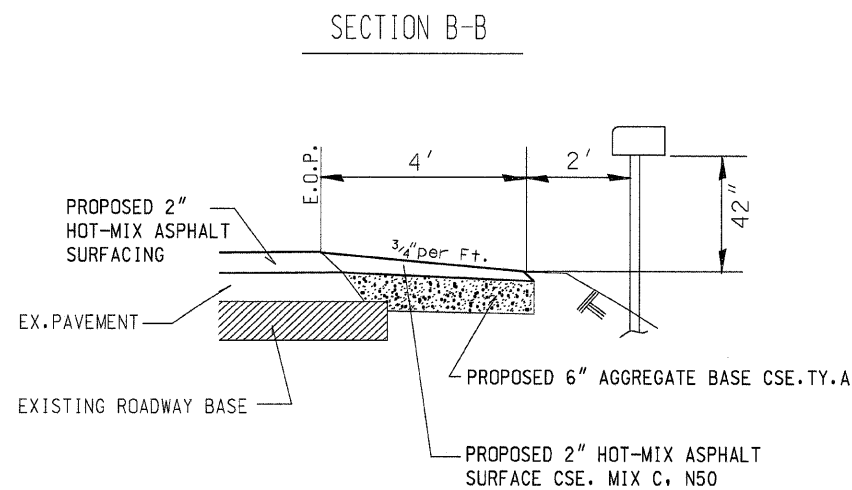
# TYPICAL MAILBOX TURNOUT DETAIL



ESTIMATED QUANTITIES - 7 MAILBOX TURNOUTS		
ITEM	UNIT	QUANTITY
EARTH EXCAVATION	CU YD	23
AGGREGATE BASE CSE, TY.A	TON	47
BIT. MATERIALS ( PRIME COAT )	GAL	7
HOT-MIX ASPHALT SURFACE CSE MIX C N50	TON	20

ALL MBTO'S HAVE BEEN PREVIOUSLY CONSTRUCTED AND SHALL RECEIVE HMA SURFACING ONLY.

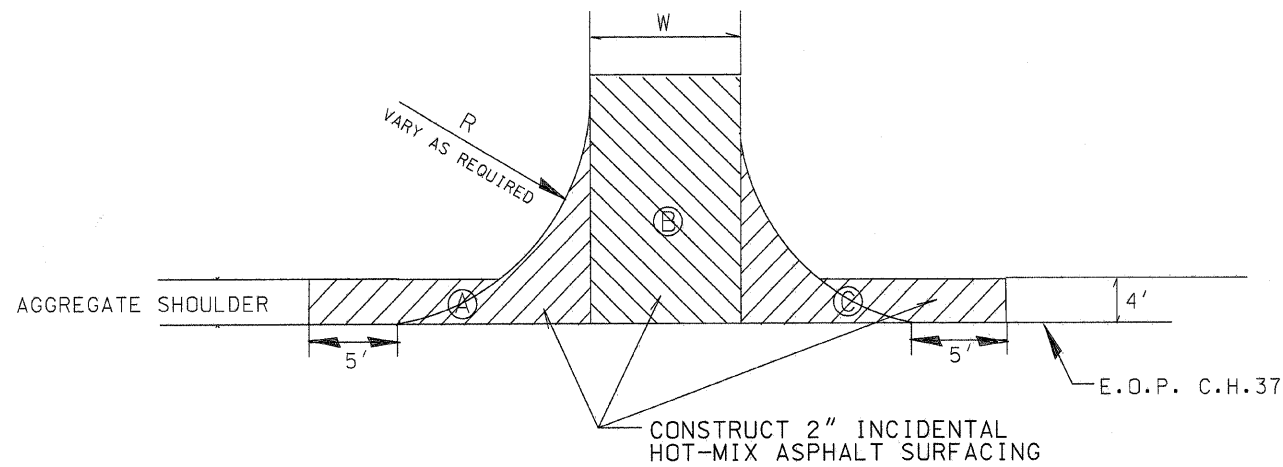
MAILBOX TURNOUT SCHEDULE	
STATION	SIDE
235+10	RT
274+43	RT
275+46	RT
281+26	RT
285+02	RT
325+08	RT
328+65	RT



# ESTIMATED QUANTITIES ON TANGENTS

ITEM	UNIT	QUANTITY
AGGREGATE SHOULDERS TY.B	TON	1717
BITUMINOUS MATERIALS ( PRIME COAT )	GALLON	3306
AGGREGATE (PRIME COAT)	TON	66
HOT-MIX ASPHALT SURFACE CSE MIX C, N50	TON	2314
LEVELING BINDER (MM) N50	TON	1851
SHORT-TERM PAVEMENT MARKING	FOOT	2969

# INTERSECTION DETAIL



INTERSECTION QUANTITY SCHEDULE

STATION	AREA	WIDTH	RADIUS	INCIDENTAL HMA SURFACING (TON)	BIT. MATRLS. (PRIME COAT) (GAL)	AGGREGATE (PRIME COAT) (TON)	LOCATION
254+31LT	A B C	18	30	15	5	0.5	8000W
254+31RT	A B C	18	30	15	5	0.5	8000W
307+28LT	A B C	18	30	15	5	0.5	9000W
307+28RT	A B C	18	30	15	5	0.5	9000W
362+88LT	A B C	18	30	15	5	0.5	10000W
362+88RT	A B C	18	30	15	5	0.5	10000W
TOTALS				90	30	3	

## Pavement Design Data

Design Period = 8 Years

ADT = 467 (2008) 486 (2012)

P.V. = 88% = 428 S.U. = 5% = 24 M.U. = 7% = 34

T.F. = 0.06

S.N. = 2.70

Pavement Structure Number

Ex. 9" AGGREGATE BASE (crushed) 9 x 0.08 = 0.72

Ex. 1" BIT A-3 1 x 0.15 = 0.15

Ex. 5 1/2" CLASS B 5.50 x 0.23 = 1.27

Prop. 2" HMA Surface Cse. 2 x 0.40 = 0.80

2.94

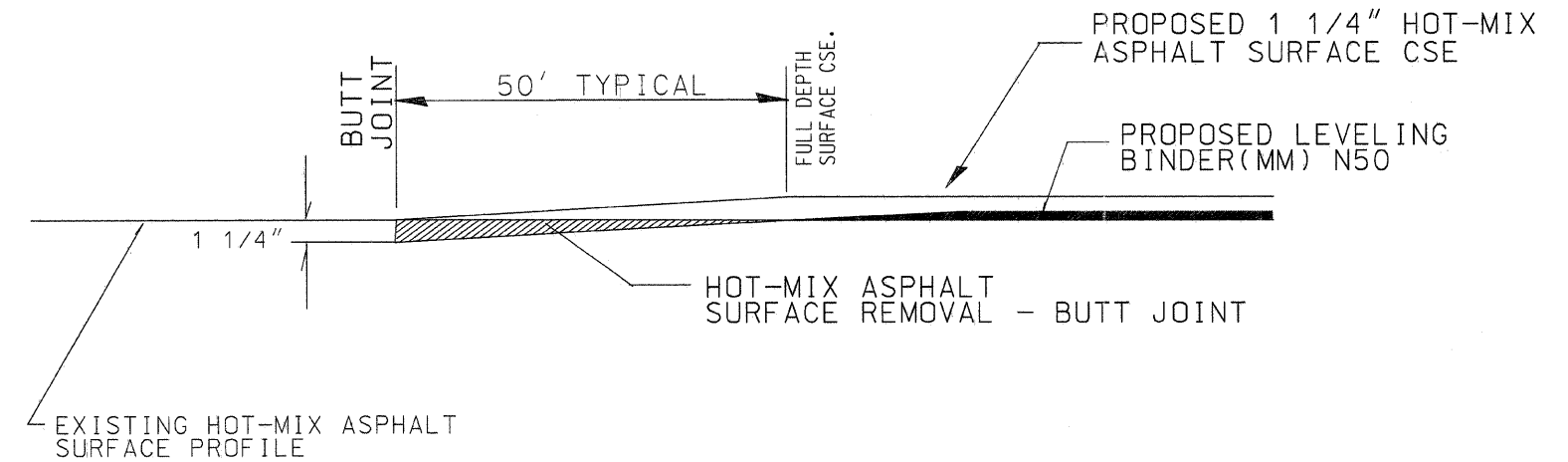
Marshall Stability  $\geq$  1700

	LEVEL BINDER	HMA SURFACE
PG GRADE	PG58-22	PG58-22
MAX % RAP ALLOWABLE* *	SEE SPECIAL PROVISION	SEE SPECIAL PROVISION
DESIGN AIR VOIDS	4.0%	4.0%
MIXTURE COMPOSITION	IL 9.5	IL 9.5
FRICTION AGGREGATE	MIXTURE C	MIXTURE C
DENSITY TEST METHOD	SATISFACTION OF THE ENGINEER	CORRELATION

\* \* IF RAP OPTION IS SELECTED, THE ASPHALT CEMENT GRADE MAY NEED TO BE ADJUSTED. THIS WILL BE DETERMINED BY THE ENGINEER.

SECTION	COUNTY	TOTAL SHEETS	SHEET NO.
04-00171-01-RS	KANKAKEE	3	3
CONTRACT NO. 87386			

# PAVEMENT REMOVAL DETAILS



HOT-MIX ASPHALT SURFACE REMOVAL AND TEMPORARY RAMP SCHEDULE

STATION	HMA SURFACE REMOVAL - BUTT JOINT	TEMPORARY RAMP (3' Wide)
213+85	67	7
307+61	67	7
307+81	67	7
362+61	67	7
TOTALS	268 SQ YD	28 SQ YD

## GENERAL NOTES:

1. IT SHALL BE THE CONTRACTOR'S RESPONSIBILITY TO DETERMINE THE ACTUAL LOCATION OF ALL UTILITY LOCATIONS .
2. PERMANENT PAVEMENT MARKINGS TO BE INSTALLED BY THE KANKAKEE COUNTY HIGHWAY DEPT.
3. FLAGMEN SHALL BE REQUIRED DURING PRIMING OPERATIONS.
4. "BUMP SIGNS" SHALL BE REQUIRED AT ALL TANGENT HOT-MIX ASPHALT SURFACE REMOVAL - BUTT JOINT LOCATIONS. THE COST SHALL BE CONSIDERED AS INCLUDED IN THE TRAFFIC CONTROL PAY ITEM.