

INDEX OF SHEETS

Sheet No.	Description
1	COVER SHEET
2	TYPICAL CROSS SECTION AND DETAILS
3	DETAILS & SCHEDULES

STANDARDS

701301-03	TRAFFIC CONTROL
701306-02	TRAFFIC CONTROL
701901-01	TRAFFIC CONTROL
BLR 23-3	TRAFFIC BARRIER TERMINAL, TYPE 1
BLR 27-1	TRAFFIC BARRIER TERMINAL, TYPE 5A

SUMMARY OF QUANTITIES

CODE NO.	DESCRIPTION	QUANTITY	UNIT
* 20200100	EARTH EXCAVATION	17	CU YD
* 20400805	FURNISHED EXCAVATION, SPECIAL	80	CU YD
* 35100100	AGGREGATE BASE CSE. TYPE A	34	TON
* 40600100	BITUMINOUS MATERIALS (PRIME COAT)	3688	GALLON
40600300	AGGREGATE (PRIME COAT)	76	TON
40600625	LEVELING BINDER (MACHINE METHOD), N50	2030	TON
40600982	HOT-MIX ASPHALT SURFACE REMOVAL - BUTT JOINT	307	SQ YD
40600990	TEMPORARY RAMP	28	SQ YD
* 40603310	HOT-MIX ASPHALT SURFACE CSE. MIX "C", N50	2578	TON
40800050	INCIDENTAL HOT-MIX ASPHALT SURFACING	80	TON
* 48101200	AGGREGATE SHOULDERS, TYPE B	1895	TON
△ * 63100075	TRAFFIC BARRIER TERMINAL, TYPE 5A	4	EACH
* 63200310	GUARDRAIL REMOVAL	235	FOOT
67100100	MOBILIZATION	1	L SUM
* 70100460	TRAFFIC CONTROL AND PROTECTION, STD 701306	1	L SUM
* 70300100	SHORT-TERM PAVEMENT MARKING	3127	FOOT
△ LR631020	TRAFFIC BARRIER TERMINAL, TYPE 1	4	EACH

Construction Code 1000

* Special Provisions
 △ Specialty Items

CONTRACT NO. 87387

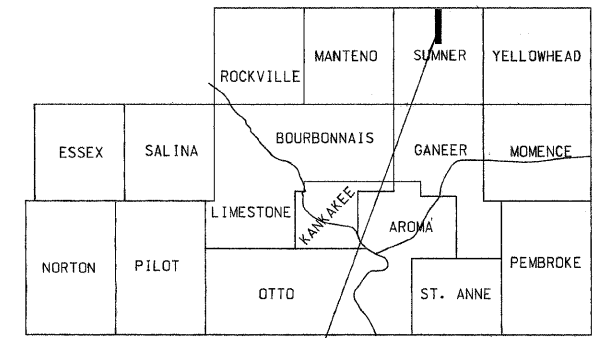
J.U.L.I.E. 1-800-892-0123

STATE OF ILLINOIS
 DEPARTMENT OF TRANSPORTATION
 COUNTY OF KANKAKEE
 DEPARTMENT OF HIGHWAYS
 PLANS FOR PROPOSED
 FEDERAL AID SECONDARY PROJECT
 SECTION 04-00047-01-RS
 F.A.S. 1327 (C.H.17) PROJECT RS- 1327(001)
 JOB NO. C-93-069-09

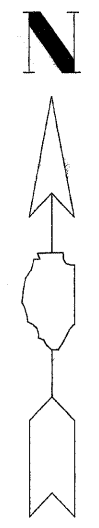
F.A.S. ROUTE NO.	SEC.	COUNTY	NO. SHEETS	SHEET NO.
1327	*	Kankakee	3	1
PROJECT RS-1327(001)			CONTRACT NO. 87387	

* 04-00047-01-RS

KANKAKEE COUNTY



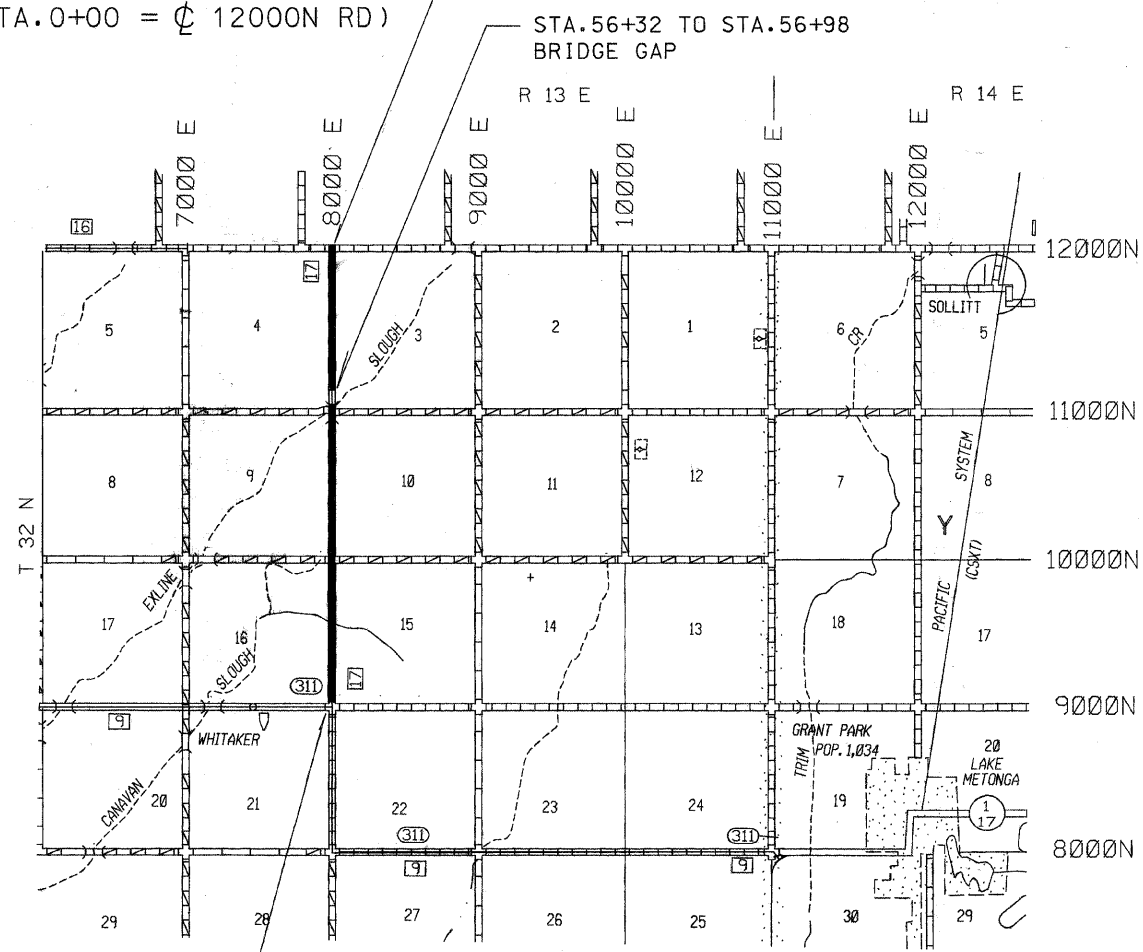
PROJECT LOCATION



THE ACCEPTANCE OF THIS PROJECT IS BASED ON THE MINIMUM DESIGN CRITERIA FOR LOCAL AGENCY PAVEMENT PRESERVATION POLICY (LAPP) PROJECTS

CLASS III ROAD
 2008 CURRENT A.D.T. = 859
 2012 DESIGN A.D.T. = 894
 DESIGN SPEED = 55 M.P.H.
 ROADWAY CLASSIFICATION = COLLECTOR

STA. 0+10
 CONSTRUCTION STARTS
 (STA. 0+00 = C 12000 RD)



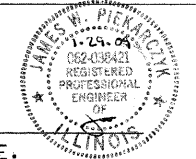
STA. 164+29
 CONSTRUCTION ENDS
 (STA. 164+66 = C 9000N RD)

GROSS LENGTH = 16,419 LIN FT = 3.11 MILES

STATE OF ILLINOIS
 DEPARTMENT OF TRANSPORTATION
 DIVISION OF HIGHWAYS

Approved 1-29 2009

James W. Piekarczyk
 JAMES W. PIEKARCZYK, P.E.
 KANKAKEE COUNTY ENGINEER



Passed 02-11 2009

Kenneth R. Lang
 KENNETH R. LANG
 BUREAU CHIEF, LOCAL ROADS & STREETS

Releasing for Bid Based on Limited Review 02-11 2009

George F. Ryan
 GEORGE RYAN
 REGION 2 ENGINEER