

INDEX OF SHEETS

Sheet No.	Description
1	COVER SHEET
2	TYPICAL CROSS SECTION AND DETAILS
3	DETAILS & SCHEDULES

STANDARDS

701301-03	TRAFFIC CONTROL
701306-02	TRAFFIC CONTROL
701901-01	TRAFFIC CONTROL
BLR 23-3	TRAFFIC BARRIER TERMINAL, TYPE 1
BLR 27-1	TRAFFIC BARRIER TERMINAL, TYPE 5A

SUMMARY OF QUANTITIES

CODE NO.	DESCRIPTION	QUANTITY	UNIT
* 20200100	EARTH EXCAVATION	17	CU YD
* 20400805	FURNISHED EXCAVATION, SPECIAL	80	CU YD
* 35100100	AGGREGATE BASE CSE. TYPE A	34	TON
* 40600100	BITUMINOUS MATERIALS (PRIME COAT)	3688	GALLON
40600300	AGGREGATE (PRIME COAT)	76	TON
40600625	LEVELING BINDER (MACHINE METHOD), N50	2030	TON
40600982	HOT-MIX ASPHALT SURFACE REMOVAL - BUTT JOINT	307	SQ YD
40600990	TEMPORARY RAMP	28	SQ YD
* 40603310	HOT-MIX ASPHALT SURFACE CSE. MIX "C", N50	2578	TON
40800050	INCIDENTAL HOT-MIX ASPHALT SURFACING	80	TON
* 48101200	AGGREGATE SHOULDERS, TYPE B	1895	TON
△ * 63100075	TRAFFIC BARRIER TERMINAL, TYPE 5A	4	EACH
* 63200310	GUARDRAIL REMOVAL	235	FOOT
67100100	MOBILIZATION	1	L SUM
* 70100460	TRAFFIC CONTROL AND PROTECTION, STD 701306	1	L SUM
* 70300100	SHORT-TERM PAVEMENT MARKING	3127	FOOT
△ LR631020	TRAFFIC BARRIER TERMINAL, TYPE 1	4	EACH

Construction Code 1000

* Special Provisions
 △ Specialty Items

CONTRACT NO. 87387

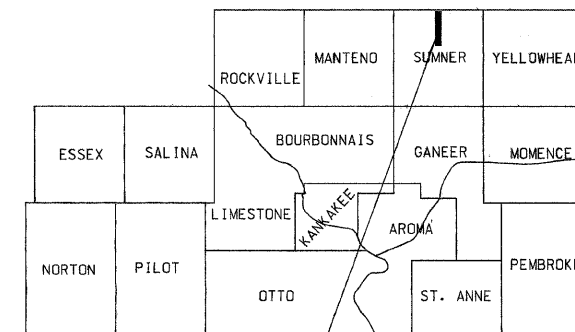
J.U.L.I.E. 1-800-892-0123

STATE OF ILLINOIS
 DEPARTMENT OF TRANSPORTATION
 COUNTY OF KANKAKEE
 DEPARTMENT OF HIGHWAYS
 PLANS FOR PROPOSED
 FEDERAL AID SECONDARY PROJECT
 SECTION 04-00047-01-RS
 F.A.S. 1327 (C.H.17) PROJECT RS- 1327(001)
 JOB NO. C-93-069-09

F.A.S. ROUTE NO.	SEC.	COUNTY	NO. SHEETS	SHEET NO.
1327	*	Kankakee	3	1
PROJECT RS-1327(001)			CONTRACT NO. 87387	

* 04-00047-01-RS

KANKAKEE COUNTY



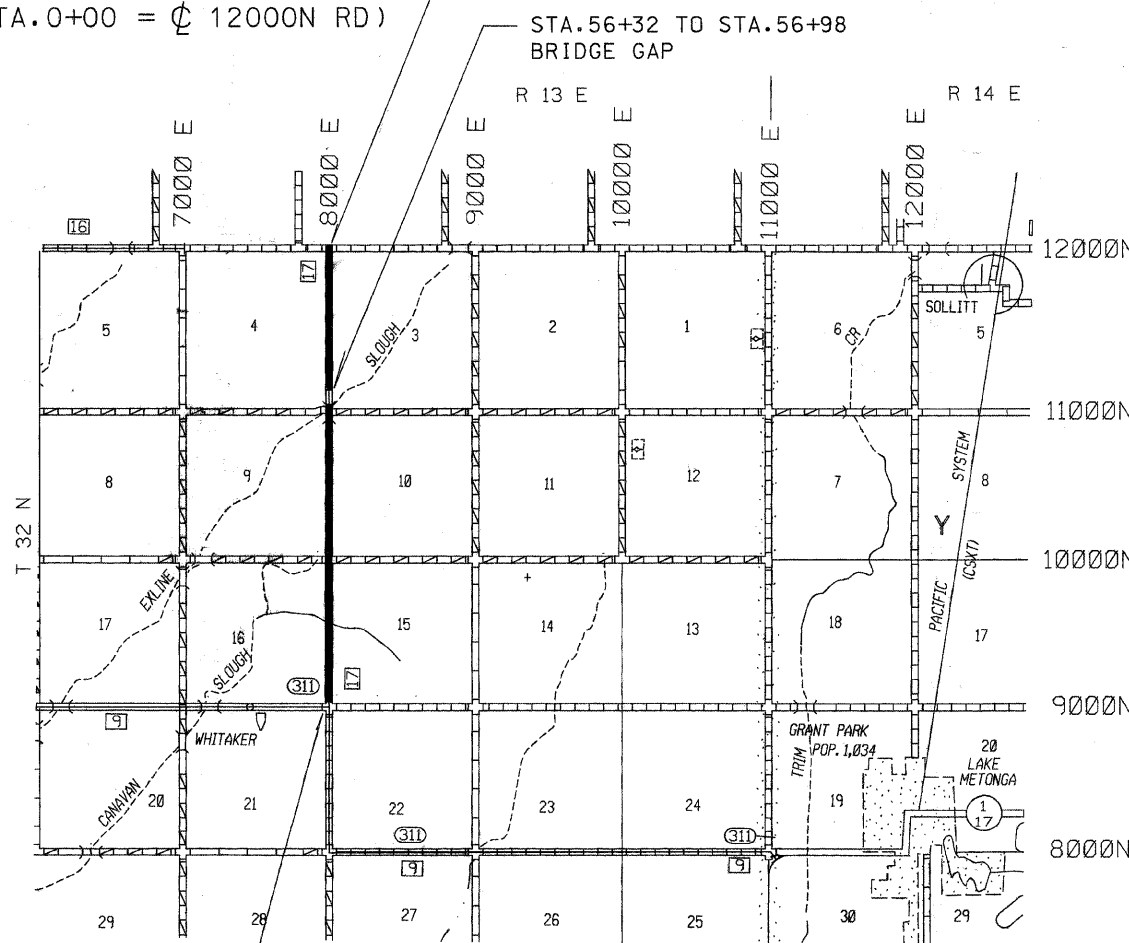
PROJECT LOCATION



THE ACCEPTANCE OF THIS PROJECT IS BASED ON THE MINIMUM DESIGN CRITERIA FOR LOCAL AGENCY PAVEMENT PRESERVATION POLICY (LAPP) PROJECTS

CLASS III ROAD
 2008 CURRENT A.D.T. = 859
 2012 DESIGN A.D.T. = 894
 DESIGN SPEED = 55 M.P.H.
 ROADWAY CLASSIFICATION = COLLECTOR

STA. 0+10
 CONSTRUCTION STARTS
 (STA. 0+00 = C 12000 RD)

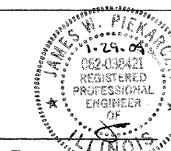


STA. 164+29
 CONSTRUCTION ENDS
 (STA. 164+66 = C 9000N RD)

GROSS LENGTH = 16,419 LIN FT = 3.11 MILES

STATE OF ILLINOIS
 DEPARTMENT OF TRANSPORTATION
 DIVISION OF HIGHWAYS

Approved 1-29 2009



JAMES W. PIEKARCZYK, P.E.
 KANKAKEE COUNTY ENGINEER

Passed 02-11 2009

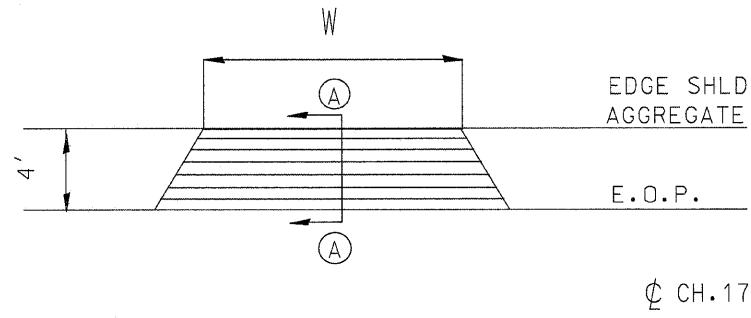
Kenneth R. Lang
 KENNETH R. LANG
 BUREAU CHIEF, LOCAL ROADS & STREETS

Releasing for Bid Based on Limited Review 02-11 2009

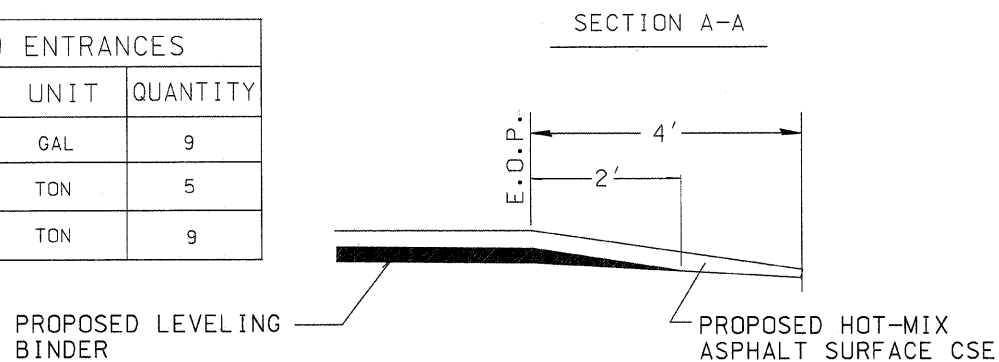
George F. Ryan
 GEORGE RYAN
 REGION 2 ENGINEER

TYPICAL ENTRANCE DETAIL

W :WIDTH OF APPROACH PADS IS ESTIMATED AT 20' PER ENTRANCE . THE ACTUAL CONSTRUCTED WIDTH MAY VARY AS DIRECTED BY THE ENGINEER TO FIT THE EXISTING ENTRANCES .
FIELD ENTRANCES SHALL NOT RECEIVE HOT-MIX ASPHALT SURFACING UNLESS DIRECTED BY THE ENGINEER.



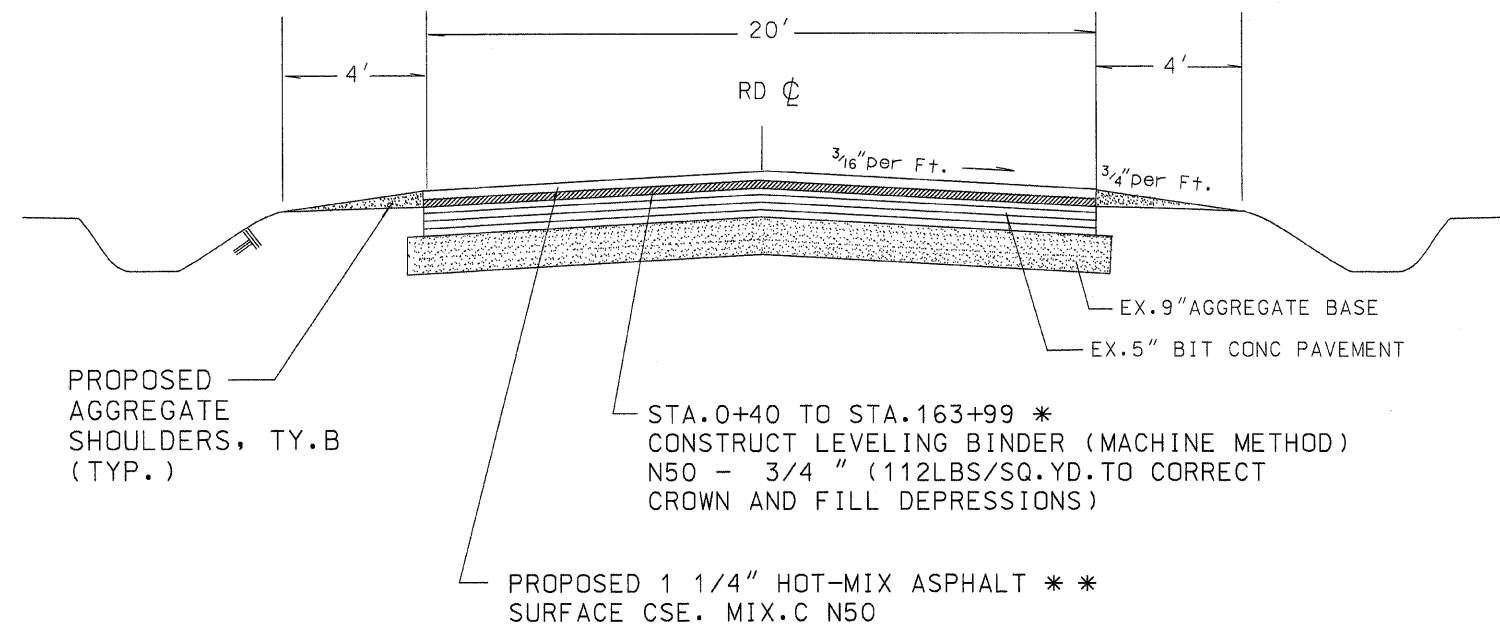
ESTIMATED QUANTITIES- 9 ENTRANCES		
ITEM	UNIT	QUANTITY
BITUMINOUS MATERIALS (PRIME COAT)	GAL	9
LEVELING BINDER (MM) N50	TON	5
HOT-MIX ASPHALT SURFACE CSE MIX C, N50	TON	9



SECTION	COUNTY	TOTAL SHEETS	SHEET NO.
04-00047-01-RS	KANKAKEE	3	2
CONTRACT NO. 87387			

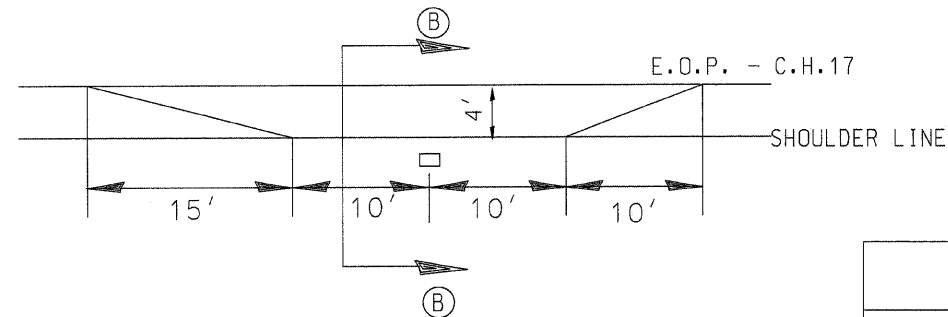
TYPICAL CROSS SECTION

STA.0+10 TO STA.164+29

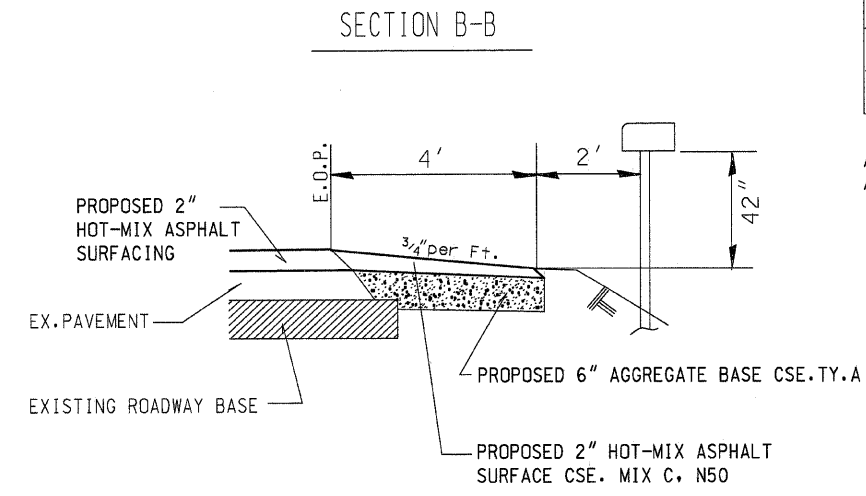


* LEVELING BINDER OMISSIONS: STA.56+02 TO STA.57+28 (BRIDGE LOCATION)
 ** HMA SURFACE CSE OMISSION: STA.56+32 TO STA.56+98 (BRIDGE DECK GAP)

TYPICAL MAILBOX TURNOUT DETAIL



ESTIMATED QUANTITIES - 5 MAILBOX TURNOUTS		
ITEM	UNIT	QUANTITY
EARTH EXCAVATION	CU YD	17
AGGREGATE BASE CSE, TY.A	TON	34
BIT. MATERIALS (PRIME COAT)	GAL	5
HOT-MIX ASPHALT SURFACE CSE MIX C N50	TON	15



ALL MBTO'S HAVE BEEN PREVIOUSLY CONSTRUCTED AND SHALL RECEIVE HMA SURFACING ONLY.

MAILBOX TURNOUT SCHEDULE	
STATION	SIDE
90+08	LT
98+04	LT
122+27	RT
122+95	RT
125+86	RT

GUARDRAIL AND FURNISHED EXCAVATION SCHEDULE

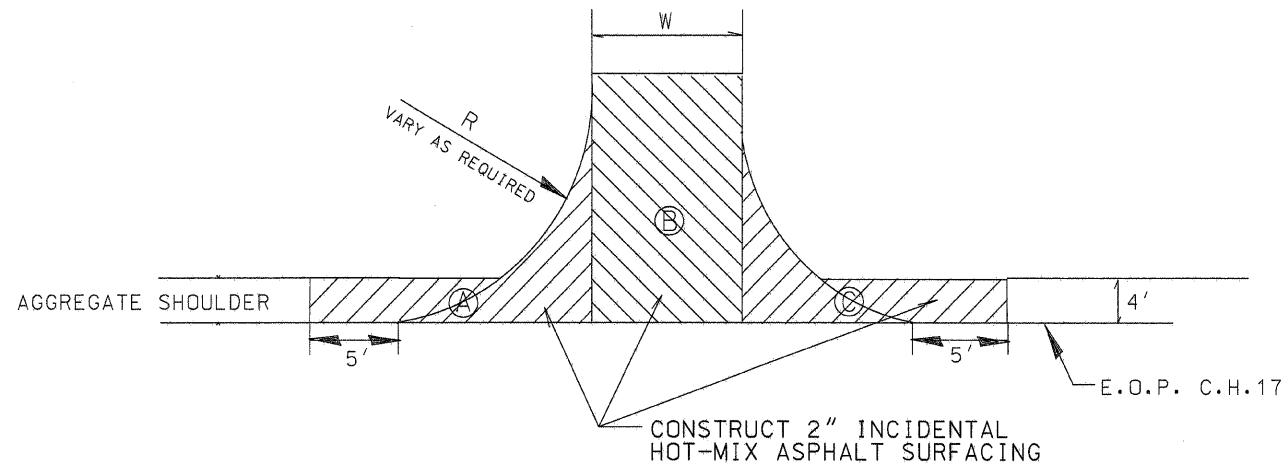
LOCATION	GUARDRAIL REMOVAL	TRAFFIC BARRIER TERMINAL TY.5A	TRAFFIC BARRIER TERMINAL TY.1	FURNISH EXCAVATION, SPECIAL †
56+32 RT	43 FOOT	1 EACH	1 EACH	20 CU YD
56+32 LT	75 FOOT	1 EACH	1 EACH	20 CU YD
56+98 RT	67 FOOT	1 EACH	1 EACH	20 CU YD
56+98 LT	50 FOOT	1 EACH	1 EACH	20 CU YD
	235 FOOT	4 EACH	4 EACH	80 CU YD

† CONSTRUCT SHOULDER EMBANKMENT SUFFICIENT TO INSTALL NEW GUARDRAIL TERMINAL SECTIONS

ESTIMATED QUANTITIES ON TANGENTS

ITEM	UNIT	QUANTITY
AGGREGATE SHOULDERS TY.B	TON	1895
BITUMINOUS MATERIALS (PRIME COAT)	GALLON	3649
AGGREGATE (PRIME COAT)	TON	73
HOT-MIX ASPHALT SURFACE CSE MIX C, N50	TON	2554
LEVELING BINDER (MM) N50	TON	2025
SHORT-TERM PAVEMENT MARKING	FOOT	3127

INTERSECTION DETAIL



INTERSECTION QUANTITY SCHEDULE

STATION	AREA	WIDTH	RADIUS	INCIDENTAL HMA SURFACING (TON)	BIT. MATRLS. (PRIME COAT) (GAL)	AGGREGATE (PRIME COAT) (TON)	LOCATION
0+10	A C	20	30	20	5	1	12000N
56+05RT	A B C	18	30	15	5	0.5	11000N
57+90LT	A B C	18	30	15	5	0.5	11000N
111+11LT	A B C	18	30	15	5	0.5	10000N
111+11LT	A B C	18	30	15	5	0.5	10000N
TOTALS				80	25	3	

Pavement Design Data

Design Period = 8 Years

ADT = 869 (2008) 894 (2012)

P.V. = 95% = 849 S.U. = 4% = 36 M.U. = 1% = 9

T.F. = 0.03

S.N. = 2.40

Pavement Structure Number

Ex. 9"	AGGREGATE BASE (crushed)	9	x 0.08 =	0.72
Ex. 1"	BIT A-3	1	x 0.20 =	0.20
Ex. 3"	CLASS B	3	x 0.23 =	0.69
Prop. 2"	HMA Surface Cse.	2	x 0.40 =	0.80
				2.41

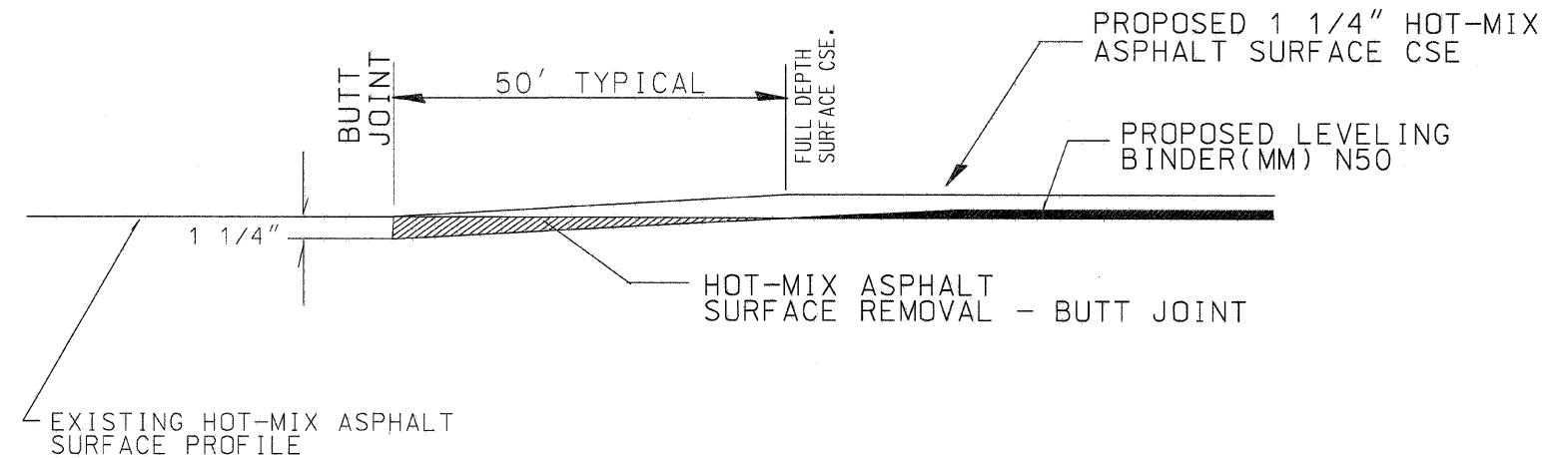
Marshall Stability \geq 1700

	LEVEL BINDER	HMA SURFACE
PG GRADE	PG58-22	PG58-22
MAX % RAP ALLOWABLE* *	SEE SPECIAL PROVISION	SEE SPECIAL PROVISION
DESIGN AIR VOIDS	4.0%	4.0%
MIXTURE COMPOSITION	IL 9.5	IL 9.5
FRICTION AGGREGATE	MIXTURE C	MIXTURE C
DENSITY TEST METHOD	SATISFACTION OF THE ENGINEER	CORRELATION

* * IF RAP OPTION IS SELECTED, THE ASPHALT CEMENT GRADE MAY NEED TO BE ADJUSTED. THIS WILL BE DETERMINED BY THE ENGINEER.

SECTION	COUNTY	TOTAL SHEETS	SHEET NO.
04-00047-01-RS	KANKAKEE	3	3
CONTRACT NO. 87387			

PAVEMENT REMOVAL DETAILS



HOT-MIX ASPHALT SURFACE REMOVAL AND TEMPORARY RAMP SCHEDULE

STATION	HMA SURFACE REMOVAL - BUTT JOINT	TEMPORARY RAMP (3' Wide)
0+10	109	7
56+32	66	7
57+98	66	7
164+29	66	7
TOTALS	307 SQ YD	28 SQ YD

GENERAL NOTES:

1. IT SHALL BE THE CONTRACTOR'S RESPONSIBILITY TO DETERMINE THE ACTUAL LOCATION OF ALL UTILITY LOCATIONS .
2. PERMANENT PAVEMENT MARKINGS TO BE INSTALLED BY THE KANKAKEE COUNTY HIGHWAY DEPT.
3. FLAGMEN SHALL BE REQUIRED DURING PRIMING OPERATIONS.
4. "BUMP SIGNS" SHALL BE REQUIRED AT ALL TANGENT HOT-MIX ASPHALT SURFACE REMOVAL - BUTT JOINT LOCATIONS. THE COST SHALL BE CONSIDERED AS INCLUDED IN THE TRAFFIC CONTROL PAY ITEM.