

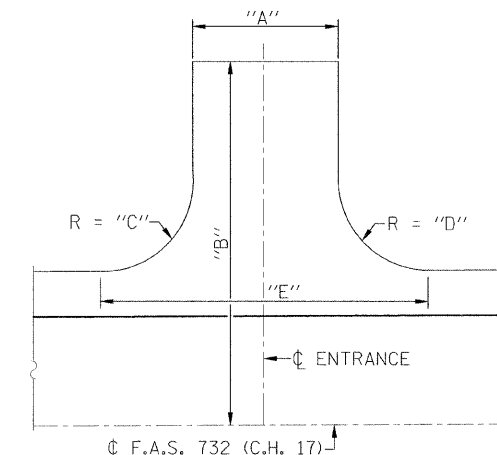
PAVEMENT LEGEND

1. EXISTING HOT MIX ASPHALT BASE COURSE 9"
2. EXISTING HOT MIX ASPHALT OVERLAYS
3. EXISTING AGGREGATE SHOULDERS, TYPE A (WEDGE)
4. PROPOSED HOT MIX ASPHALT BASE COURSE WIDENING - 9"
5. PROPOSED HOT MIX ASPHALT BINDER COURSE - VARIABLE
6. PROPOSED HOT MIX ASPHALT SURFACE COURSE - 1 1/2"
7. PROPOSED AGGREGATE SHOULDER, TYPE B
8. PROPOSED PAINT PAVEMENT MARKING - LINE 4"

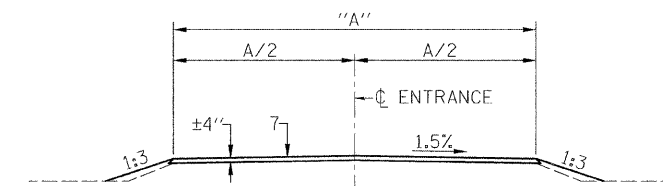
**SCHEDULE
ENTRANCE IMPROVEMENT**

LOCATION	TYPE OF ENTRANCE	"A" (FOOT)	"B" (FOOT)	"C" (FOOT)	"D" (FOOT)	"E" (FOOT)	AGGREGATE SHOULDER TYPE B (TON)
STA. 209+38 LT.	F.E.	-	-	-	-	-	-
STA. 214+31 LT.	F.E.	-	-	-	-	-	-
STA. 224+19.50 LT.	F.E.	16	40	10	10	36	11
STA. 234+06 RT.	F.E.	24	40	10	10	44	15
STA. 240+66 LT.	F.E.	18	40	10	10	--	--
STA. 242+00 RT.	F.E.	16	40	15	15	42	10
STA. 246+58.50 RT.	C.E.	31	40	20	30	80	25
STA. 247+41.50 LT.	F.E.	20	40	10	10	38	13
STA. 247+77.50 RT.	F.E.	20	40	10	10	39	13
STA. 253+00 LT.	F.E.	16	40	10	10	38	10
STA. 260+17 RT.	F.E.	16	40	10	10	37	11
STA. 261+00 RT.	F.E.	16	40	10	10	39	11
STA. 268+00 LT.	F.E.	16	40	10	10	38	10
STA. 277+49 LT.	F.E.	17	40	10	20	46	12
STA. 280+46 LT.	F.E.	16	40	15	15	46	12
STA. 286+33 RT.	F.E.	20	30	15	15	49	9
STA. 287+57 RT.	P.E.	24	30	20	15	60	12
STA. 290+98 LT.	F.E.	17	25	15	15	44	5
STA. 296+28 RT.	F.E.	20	40	10	10	41	13
STA. 298+03 RT.	P.E.	12	40	10	10	32	8
STA. 299+65 RT.	P.E.	12	28	10	10	32	5
STA. 300+49 LT.	F.E.	16	30	10	10	36	7
STA. 300+72 RT.	F.E.	16	30	10	10	35	7
STA. 306+75 LT.	F.E.	24	30	15	15	54	10
STA. 313+61 LT.	C.E.	24	40	10	10	44	15
STA. 314+06 LT.	F.E.	16	40	10	10	36	11
STA. 325+14 LT.	C.E.	24	30	12	12	49	10
STA. 335+57 LT.	P.E.	20	40	22	22	63	16
STA. 340+34 RT.	P.E.	12	30	10	10	32	5
STA. 341+51 LT.	F.E.	14	40	11	38	53	14
STA. 341+65 RT.	F.E.	34	28	22	38	77	13
TOTAL							413*

* QUANTITY TO BE INCLUDED IN AGGREGATE SHOULDERS SCHEDULE



TYPICAL ENTRANCE PLAN



TYPICAL ENTRANCE SECTION

USER NAME = #USER#	DESIGNED - ---	REVISED - ---
	DRAWN - ---	REVISED - ---
PLOT SCALE = #SCALE#	CHECKED - ---	REVISED - ---
PLOT DATE = #DATE#	DATE - ---	REVISED - ---



Allen Henderson & Associates, Inc.
Civil and Structural Engineers Springfield, IL
62703 Phone: (217)544-8033 IL Design Firm
No. 184-001907

ENTRANCE DETAILS

SCALE: _____ SHEET NO. ___ OF ___ SHEETS STA. _____ TO STA. _____

F.A.S. RTE.	SECTION	COUNTY	TOTAL SHEETS	SHEET NO.
732	07-00125-02-RS	MONTGOMERY	57	4
CONTRACT NO. 93480				
FED. ROAD DIST. NO. - ILLINOIS FED. AID PROJECT				