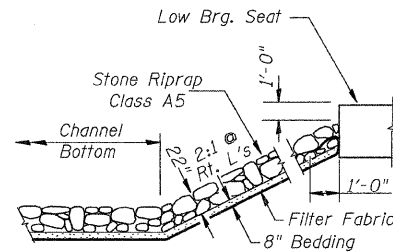


B.M.: RR Spike in Power Pole
Sta. 15+88, 23' Rt.
Elev. 560.05

RR Spike in Power Pole
Sta. 23+21, 26' Rt.
Elev. 564.47

Existing Structure:
Three span reinforced concrete deck on steel stringer superstructure supported on concrete pile bent piers with exposed timber piles and concrete spill thru pile bent abutments. The structure is ±124' back to back of abutments, ±26' out to out of deck and is not skewed. Str. No. 069-3072

Salvage: None
Road to be closed to traffic during construction.



STONE RIPRAP DETAIL

MAUVAISE TERRE CREEK
BUILT 200 BY
ROAD DISTRICT NO. 6
MORGAN COUNTY
SEC. 06-06120-00-BR
T.R. 134A STATION 20+00.00
F.A. PROJ. BROS-0137(027)
STR. NO. 069-3263 LOADING HS20-44

NAME PLATE

Locate Name Plate at S.E. Wingwall
Corner of Bridge (See Std. 515001)

ROUTE NO.	SECTION	COUNTY	TOTAL SHEETS	SHEET NO.
TR 134A	*	MORGAN	28	7
FED. ROAD DIST. NO. 7	BUILDING	PROJECT BROS-0137(027)		
*06-06120-00-BR	CONTRACT # 93481			

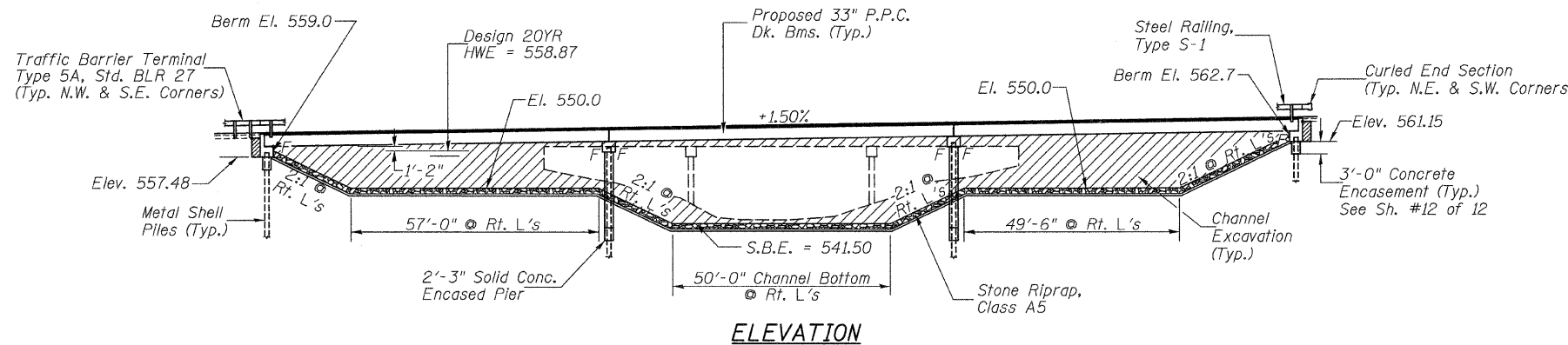
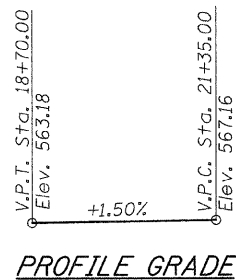
SHEET NO. 1
OF 12 SHEETS

GENERAL NOTES

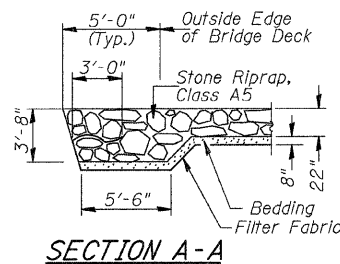
The Contractor shall drive test piles to 10% of the nominal required bearing specified in production locations at the substructures specified or approved by the Engineer before ordering the remainder of the piles.
For Soil Boring Logs, See Special Provisions.
A Corrosion Inhibitor shall be used in the concrete for Precast Prestressed Concrete Deck Beams according to Article 1020.05(b)(12) of the Standard Specifications.
Reinforcement Bars shall conform to the requirements of ASTM A706 Grade 60. See Special Provisions.
Reinforcement Bars designated (E) shall be epoxy coated.
Layout of the slope protection system may be varied in the field to suit ground conditions as directed by the Engineer.
The existing structural steel coating may contain lead. The contractor should take appropriate precautions to deal with the presence of lead on this project.
The top surface of the beams shall be finished according to the IDOT Manual for Fabrication of Precast Prestressed Concrete Products.

TOTAL BILL OF MATERIAL

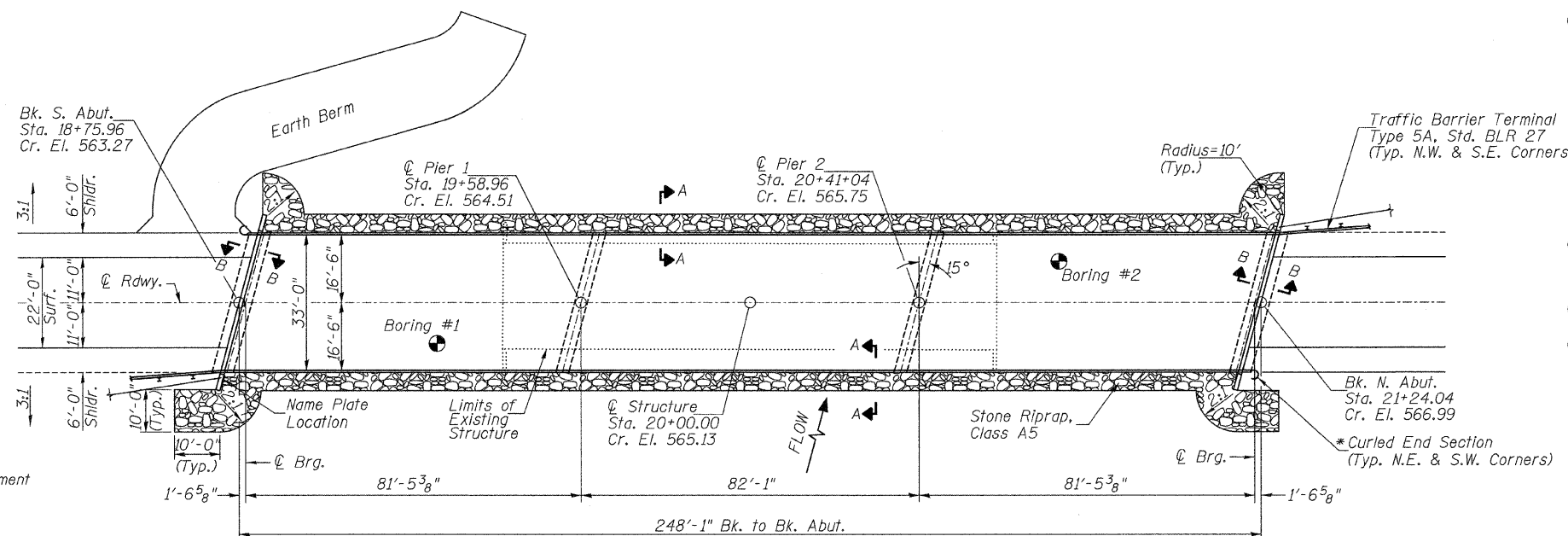
ITEM	UNIT	SUPER	SUB	TOTAL
Channel Excavation	CU YD		4,050	4,050
Stone Riprap, Class A5	TON		1,500	1,500
Filter Fabric	SQ YD		1,450	1,450
① Removal of Existing Structures	EACH		1	1
Structure Excavation	CU YD		185	185
Concrete Structures	CU YD		148.0	148.0
① Precast Prestressed Concrete Deck Beams (33" Depth)	SQ FT	8,118		8,118
① Reinforcement Bars	POUND		11,810	11,810
Steel Railing, Type S1	FOOT	496		496
Furnishing Metal Shell Piles 14"	FOOT		1,724	1,724
Driving Piles	FOOT		1,724	1,724
Test Pile Metal Shells	EACH		4	4
Pile Shoes	EACH		28	28
Concrete Encasement	CU YD		10.8	10.8
Name Plates	EACH		1	1
Waterproofing Membrane System	SQ YD	910		910
Portland Cement Mortar Fairing Course	FOOT	625		625
① Controlled Low-Strength Material	CU YD		24.2	24.2
Hot-Mix Asphalt Surface Course, Mix "C", NSO	TON	81		81
① Underwater Structure Excavation Protection-Location 1 (Pier #1)	EACH		1	1
① Underwater Structure Excavation Protection-Location 2 (Pier #2)	EACH		1	1
① See Special Provisions				



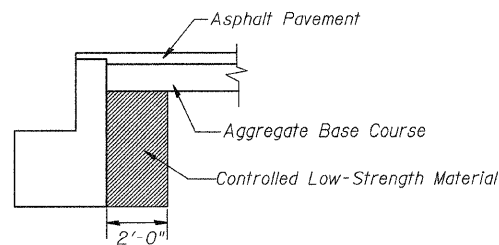
ELEVATION



SECTION A-A



PLAN



SECTION B-B

WATERWAY INFORMATION

Drainage Area = 109.7 Sq. Mi. Low Grade Elev. = 561.85 @ Sta. 16+93.14

Flood	Freq. Yr.	Q C.F.S.	Opening Sq. Ft. Exist.	Prop.	Nat. H.W.E. Exist.	Prop.	Head - Ft. Exist.	Prop.	Headwater El. Exist.	Prop.
Design	20	8,117	1,152	2,377	558.87	1.37	0.50	560.24	559.37	
Base	100	11,647	1,192	2,460	559.25	2.78	0.99	562.03	560.24	

Construction of this project complies with IDNR,
Office of Water Resources Statewide Permit No. 2

DESIGN SPECIFICATIONS

2002 AASHTO & Interims

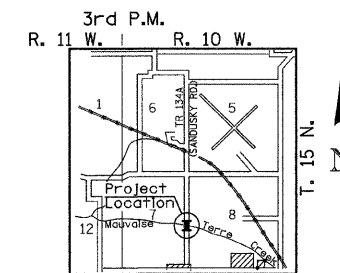
DESIGN STRESSES

(FIELD UNITS) f'c = 3,500 p.s.i. fy = 60,000 p.s.i. (Rein.)

(PRECAST PRESTRESSED UNITS) f'c = 6,000 p.s.i. f'ci = 5,000 p.s.i. f's = 270,000 p.s.i. (1/2" Strands) f'si = 201,960 p.s.i. (1/2" Strands)

LOADING HS20-44

Allow 50#/sq. ft. for future wearing surface.



LOCATION SKETCH



Joseph E. Hutter
Illinois Structural No. 6440
Expires 11/30/2010

GENERAL PLAN & ELEVATION
TOWNSHIP ROAD 134A OVER
MAUVAISE TERRE CREEK
SECTION 06-06120-00-BR
MORGAN COUNTY
STR. NO. 069-3263
STATION 20+00.00