

ROUTE NO.	SECTION	COUNTY	TOTAL SHEETS	SHEET NO.
TR 134A	*	MORGAN	28	28
STA. 25+50.00 TO STA. 26+00.00				
FED. ROAD DIST. NO. 7	ILLINOIS	PROJECT BROS-0137(027)	CONTRACT NO. 09481	

SEC 06-06120-00-BR  
 ENDS STA 26+00.00  
 C = 0 F = 0 AH  
 C = 30 F = 0 BK

SP DT LT ENDS  
 STA 26+00.00  
 GRADE +1.22%  
 ELEV. 582.70

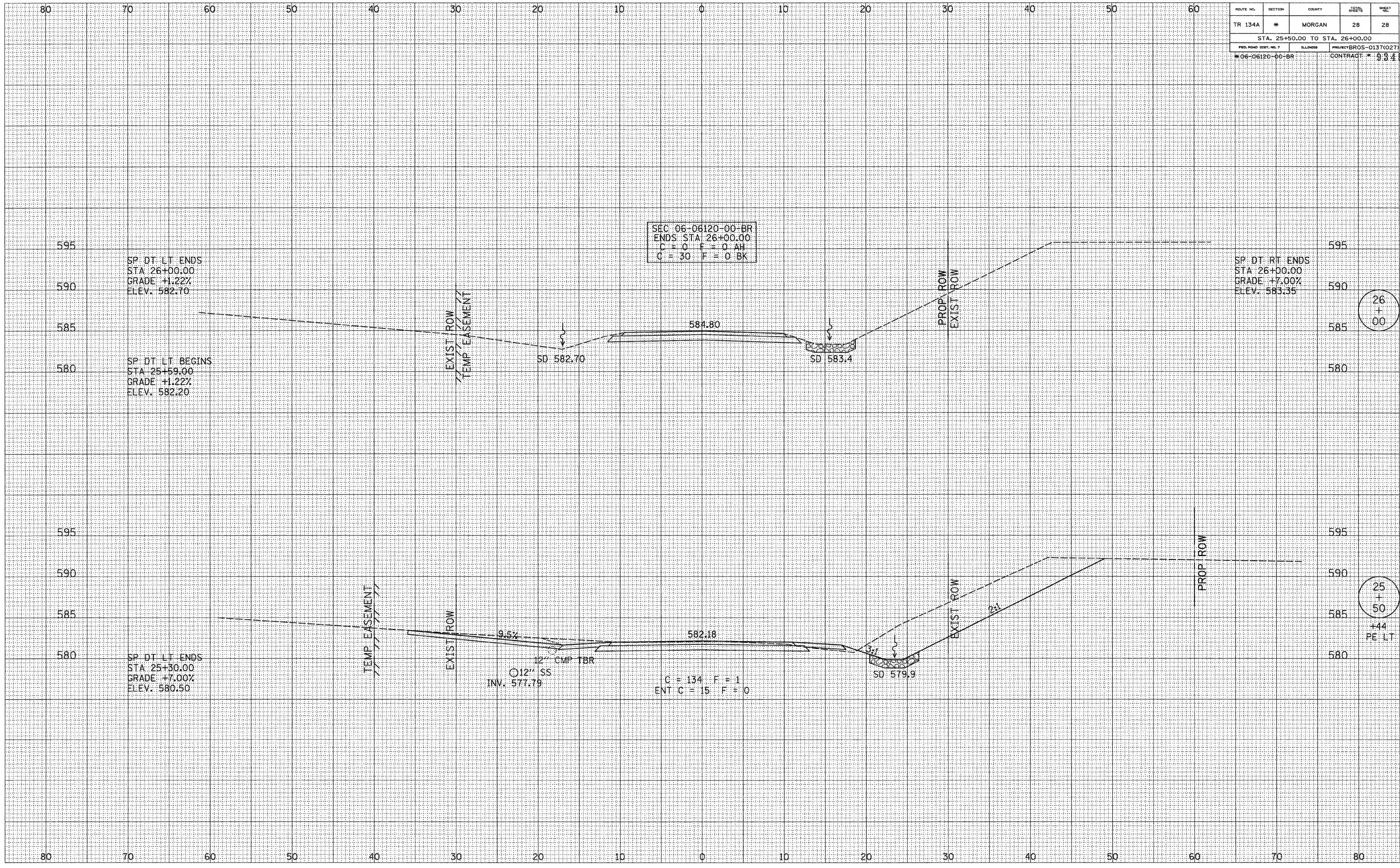
SP DT RT ENDS  
 STA 26+00.00  
 GRADE +7.00%  
 ELEV. 583.35

SP DT LT BEGINS  
 STA 25+59.00  
 GRADE +1.22%  
 ELEV. 582.20

SP DT LT ENDS  
 STA 25+50.00  
 GRADE +7.00%  
 ELEV. 580.50

12" CMP TBR  
 12" SS  
 INV. 577.79

C = 134 F = 1  
 ENT C = 15 F = 0



26  
+  
00

25  
+  
50  
+44  
PE LT

DATE	BY
DATE	BY
DATE	BY
DATE	BY
DATE	BY
DATE	BY

DATE	BY
DATE	BY
DATE	BY
DATE	BY
DATE	BY