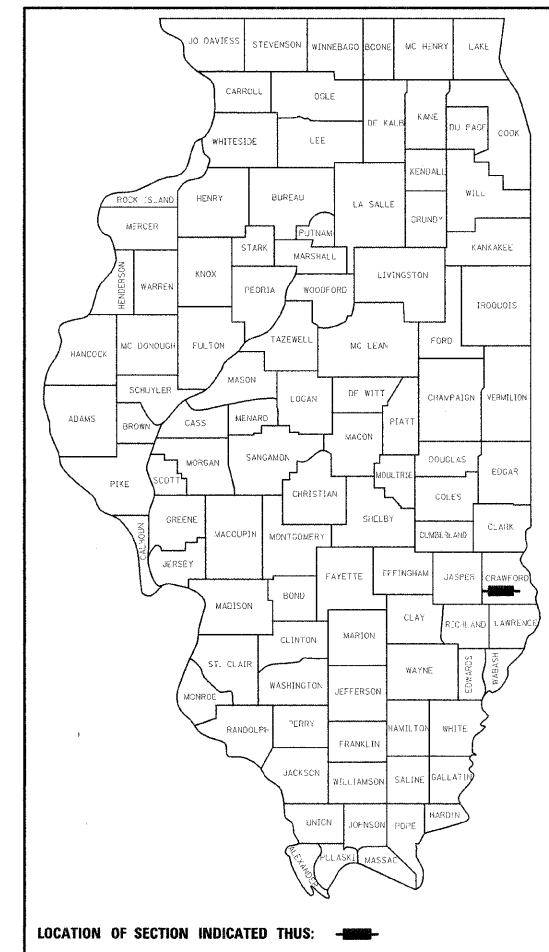


F.A.P. RTE.	SECTION	COUNTY	TOTAL SHEETS	SHEET NO.
781	1YRS	CRAWFORD	212	1
STA.		TO STA.		
FED. ROAD DIST. NO.		ILLINOIS	FED. AID PROJECT	

D-97-035-97



STATE OF ILLINOIS  
DEPARTMENT OF TRANSPORTATION  
DIVISION OF HIGHWAYS

**PROPOSED  
HIGHWAY PLANS**

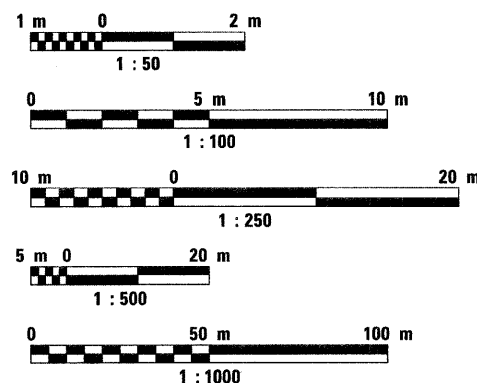
F.A.P. ROUTE 781 (IL. ROUTE 33)  
SECTION 1YRS  
C-97-007-98  
CRAWFORD COUNTY  
PROJECT: ACF-0781(029)

FOR INDEX OF SHEETS, SEE SHEET NO. 2  
FOR THE LIST OF APPLICABLE IDOT HIGHWAY STANDARDS, SEE SHEET NO. 2

STRUCTURAL DESIGN TRAFFIC:	YEAR	2019
PV =	8173	SU = 145 MU = 377
ROAD/STREET CLASSIFICATION:	CLASS	II
PERCENT OF STRUCTURAL DESIGN TRAFFIC IN DESIGN LANE:		
P =	50	S = 50 M = 50
TRAFFIC FACTOR:	Actual TF =	1.63
	Minimum TF =	3.81
SUBGRADE SUPPORT RATING:		
SSR =	Poor	(STA. 13+143 TO 13+750 )
SSR =		(STA. _____ TO _____ )

DESIGN DESIGNATION:  
8695(19) Arterial 3.81 (FD-20)  
2019 ADT = 8695

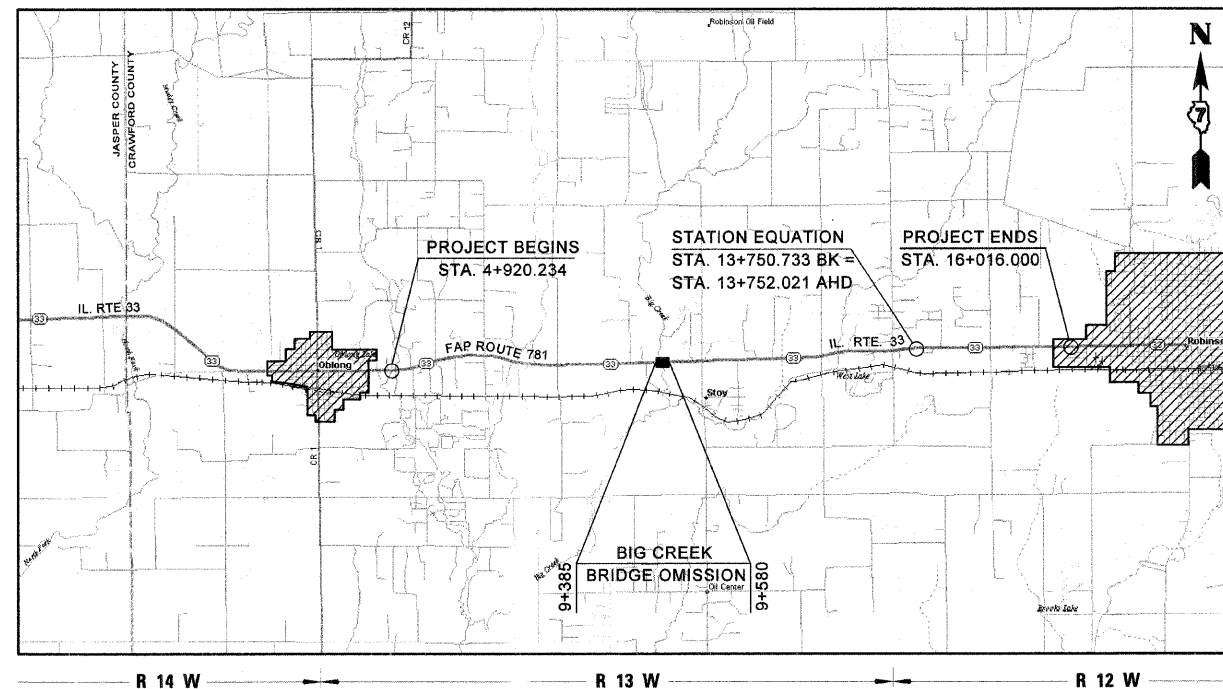
METRIC RATIOS



FULL SIZE PLANS HAVE BEEN PREPARED USING STANDARD ENGINEERING SCALES. REDUCED SIZED PLANS WILL NOT CONFORM TO STANDARD SCALES. IN MAKING MEASUREMENTS ON REDUCED PLANS, THE ABOVE SCALES MAY BE USED.

J.U.L.I.E.  
JOINT UTILITY LOCATION INFORMATION FOR EXCAVATION  
1-800-892-0123

CONTRACT NO. 94533



LOCATION MAP  
SCALE 1:80,000

GROSS LENGTH OF IMPROVEMENT = 11,095.766 METERS = 11.096 KILOMETERS  
STATION EQUATION OMISSION = 1.288 METERS = 0.001 KILOMETERS  
ROAD AND BRIDGE OMISSIONS = 195.000 METERS = 0.195 KILOMETERS  
NET LENGTH OF IMPROVEMENT = 10,899.476 METERS = 10.899 KILOMETERS

PLANS PREPARED BY



HENRY, MEISENHEIMER & GENDE, INC.  
ENGINEERS  
CARLYLE, ILLINOIS 62231  
www.hmgengineers.com

(618) 594-3711 Fax (618) 594-8217



Scott A. Rakers 01/30/09  
SCOTT A. RAKERS, P.E.  
ILLINOIS REGISTERED ENGINEER NO. 062-049177  
REGISTRATION EXPIRES NOV. 30, 2009

STATE OF ILLINOIS  
DEPARTMENT OF TRANSPORTATION  
DIVISION OF HIGHWAYS

SUBMITTED January 30 20 09

Roger L. Schiella  
DEPUTY DIRECTOR OF HIGHWAYS, REGION ENGINEER

March 27, 20 09  
Charles G. Ingemol  
ENGINEER OF DESIGN AND ENVIRONMENT

March 27, 20 09  
Christine M. Reed  
DIRECTOR OF HIGHWAYS, CHIEF ENGINEER

PRINTED BY THE AUTHORITY  
OF THE STATE OF ILLINOIS

Project Engineer: Mark Daugherty  
Telephone: (217) 342-8341

PLOT DATE = 12/22/2008  
FILE NAME = H:\4428\Contract 94533\SH1\_081\cover.dgn

HMG JOB NO. 4420