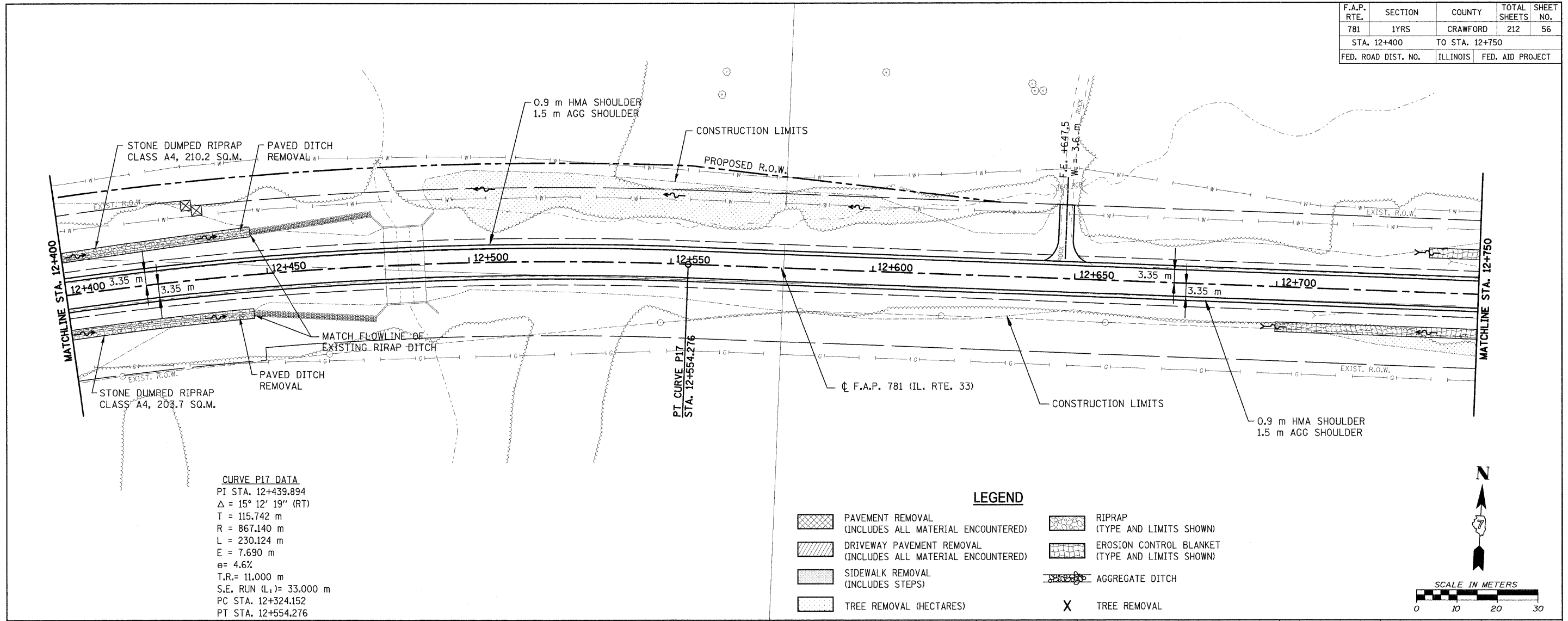


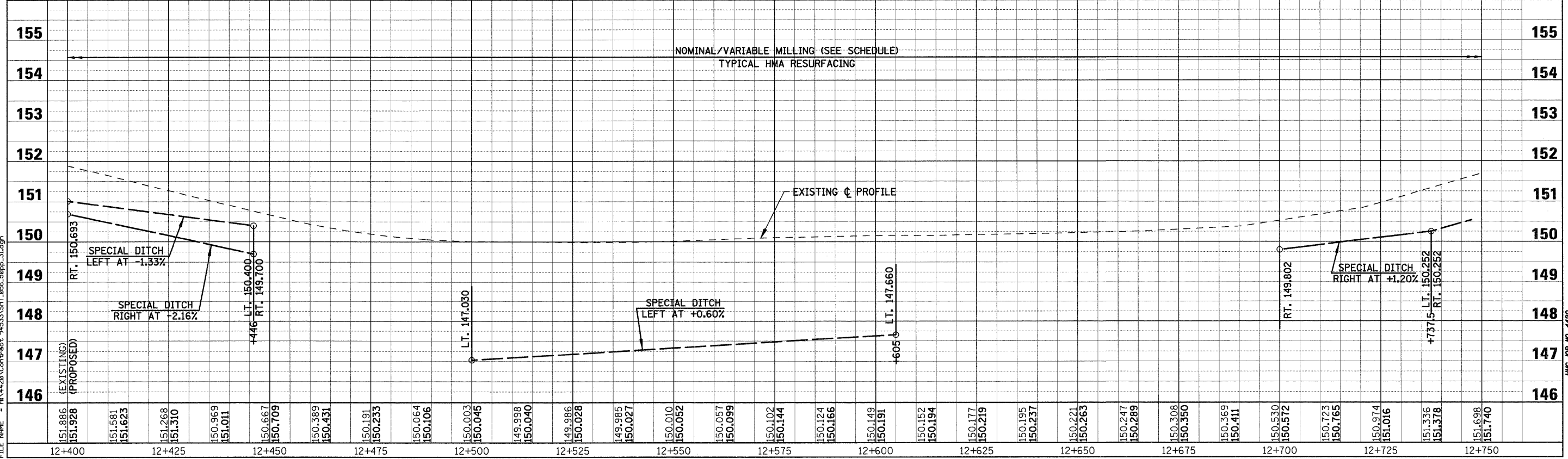
F.A.P. RTE.	SECTION	COUNTY	TOTAL SHEETS	SHEET NO.
781	1YRS	CRAWFORD	212	56
STA. 12+400		TO STA. 12+750		
FED. ROAD DIST. NO.		ILLINOIS	FED. AID PROJECT	



CURVE P17 DATA
 PI STA. 12+439.894
 $\Delta = 15^\circ 12' 19''$ (RT)
 T = 115.742 m
 R = 867.140 m
 L = 230.124 m
 E = 7.690 m
 $e = 4.6\%$
 T.R. = 11.000 m
 S.E. RUN (L_1) = 33.000 m
 PC STA. 12+324.152
 PT STA. 12+554.276

LEGEND

	PAVEMENT REMOVAL (INCLUDES ALL MATERIAL ENCOUNTERED)		RIPRAP (TYPE AND LIMITS SHOWN)
	DRIVEWAY PAVEMENT REMOVAL (INCLUDES ALL MATERIAL ENCOUNTERED)		EROSION CONTROL BLANKET (TYPE AND LIMITS SHOWN)
	SIDEWALK REMOVAL (INCLUDES STEPS)		AGGREGATE DITCH
	TREE REMOVAL (HECTARES)		TREE REMOVAL



PLOT DATE = 12/22/2008
 FILE NAME = H:\V\20\Contract\94533\SH1_086_50pp_31.dgn