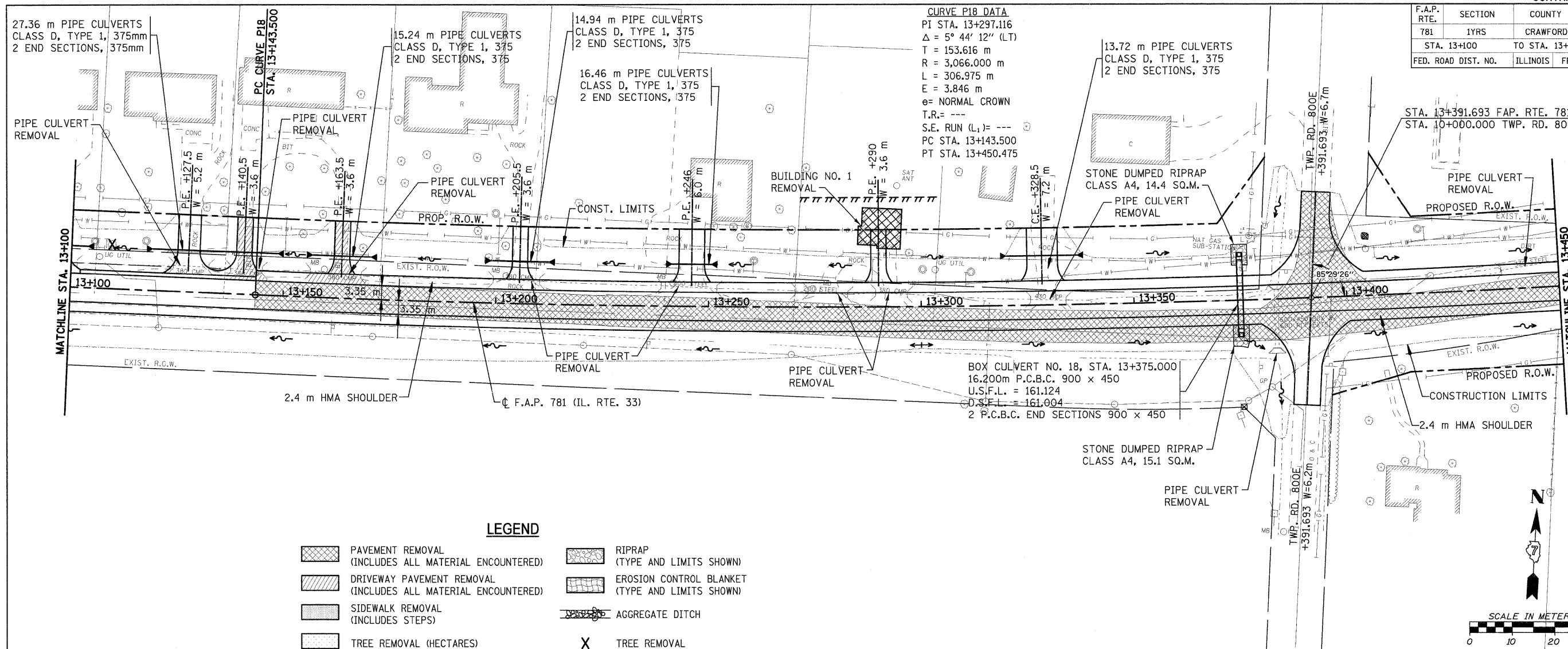


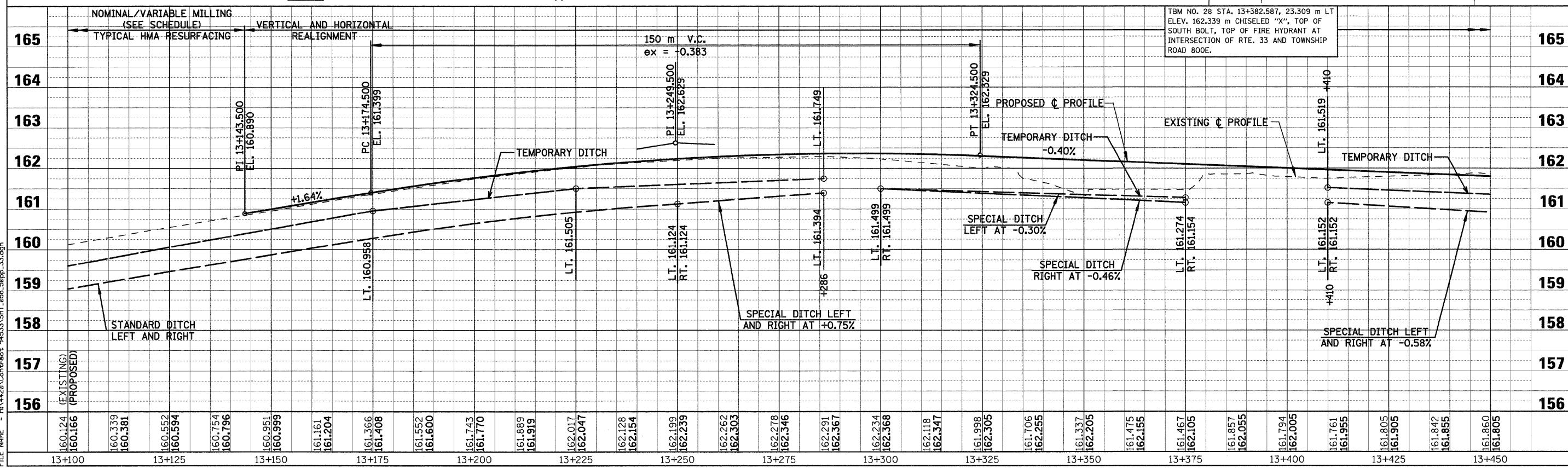
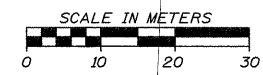
F.A.P. RTE.	SECTION	COUNTY	TOTAL SHEETS	SHEET NO.
781	1YRS	CRAWFORD	212	58
STA. 13+100		TO STA. 13+450		
FED. ROAD DIST. NO.		ILLINOIS	FED. AID PROJECT	



CURVE P18 DATA
 PI STA. 13+297.116
 $\Delta = 5^\circ 44' 12''$ (LT)
 T = 153.616 m
 R = 3,066.000 m
 L = 306.975 m
 E = 3.846 m
 e = NORMAL CROWN
 T.R. = ---
 S.E. RUN (L₁) = ---
 PC STA. 13+143.500
 PT STA. 13+450.475

LEGEND

	PAVEMENT REMOVAL (INCLUDES ALL MATERIAL ENCOUNTERED)		RIPRAP (TYPE AND LIMITS SHOWN)
	DRIVEWAY PAVEMENT REMOVAL (INCLUDES ALL MATERIAL ENCOUNTERED)		EROSION CONTROL BLANKET (TYPE AND LIMITS SHOWN)
	SIDEWALK REMOVAL (INCLUDES STEPS)		AGGREGATE DITCH
	TREE REMOVAL (HECTARES)		TREE REMOVAL



Sheet: 50pp_33.dgn
 Angle: 3.2235
 Chain: P_IL33
 12/22/2008

PLOT DATE = 12/22/2008
 FILE NAME = P:\V\420\Cont\cont\94533\SH1_068_50pp_33.dgn

HMG JOB NO. 4420