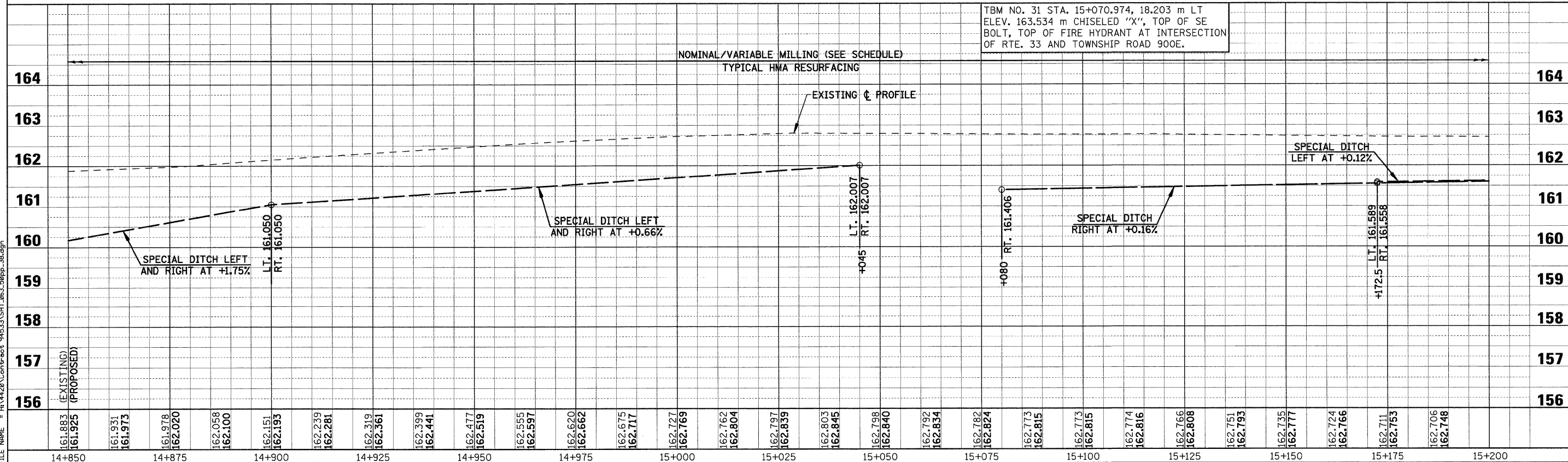
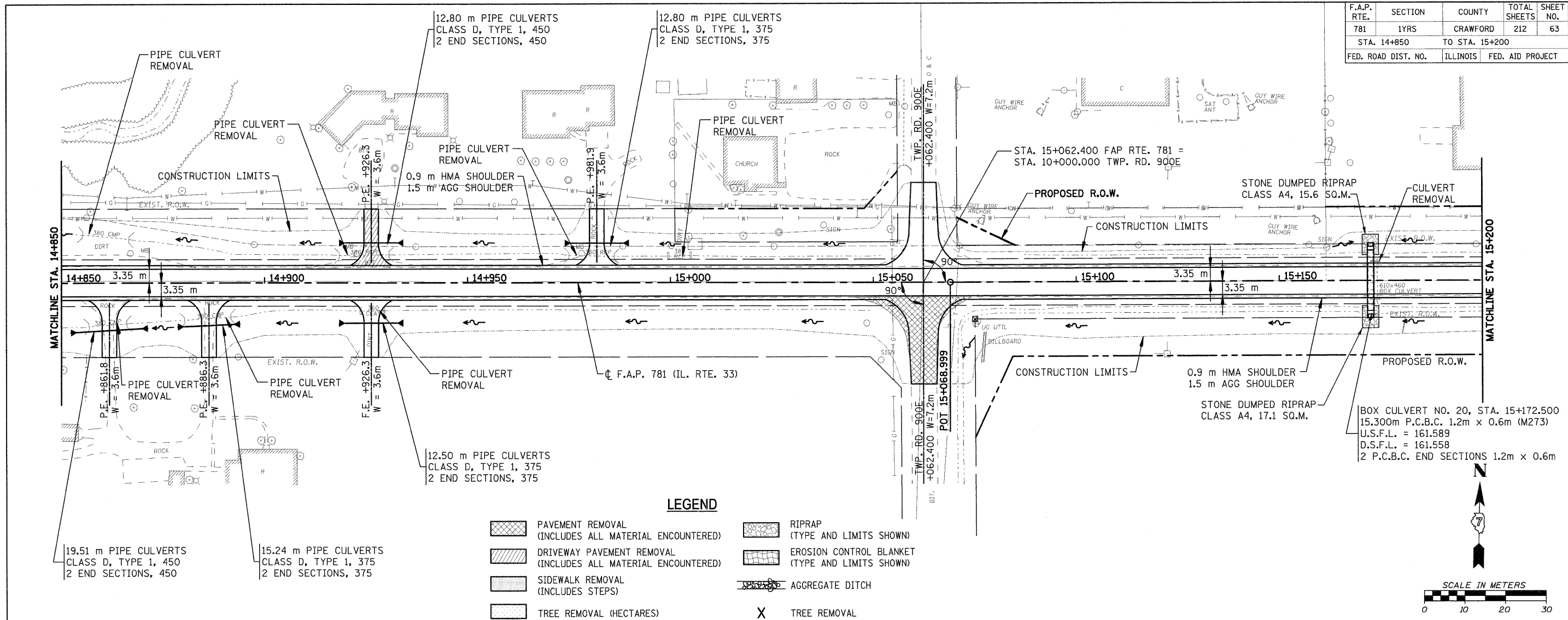


F.A.P. RTE.	SECTION	COUNTY	TOTAL SHEETS	SHEET NO.
781		CRAWFORD	212	63
STA. 14+850		TO STA. 15+200		
FED. ROAD DIST. NO.		ILLINOIS	FED. AID PROJECT	



TBM NO. 31 STA. 15+070.974, 18.203 m LT ELEV. 163.534 m CHISELED "X", TOP OF SE BOLT, TOP OF FIRE HYDRANT AT INTERSECTION OF RTE. 33 AND TOWNSHIP ROAD 900E.

PLOT DATE = 12/22/2008  
FILE NAME = H:\442\Contract\94533\SH1\_063.dgn