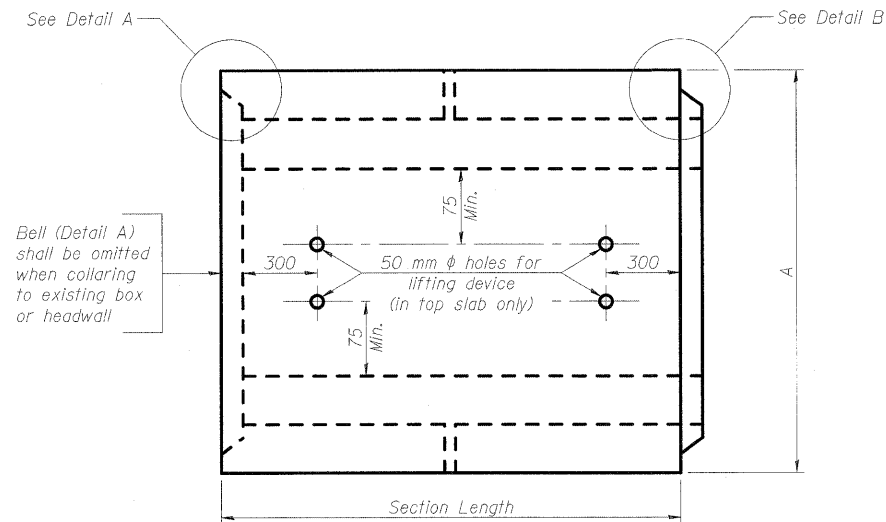
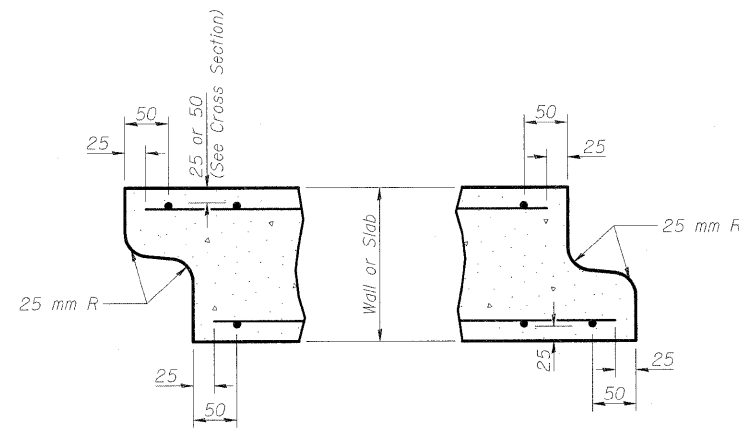


F.A.P. RTE.	SECTION	COUNTY	TOTAL SHEETS	SHEET NO.
781	1YRS	CRAWFORD	212	105
STA.		TO STA.		
FED. ROAD DIST. NO.	ILLINOIS	FED. AID PROJECT		



PLAN

Location of lifting holes may be varied as needed to clear reinforcement.



DETAIL A

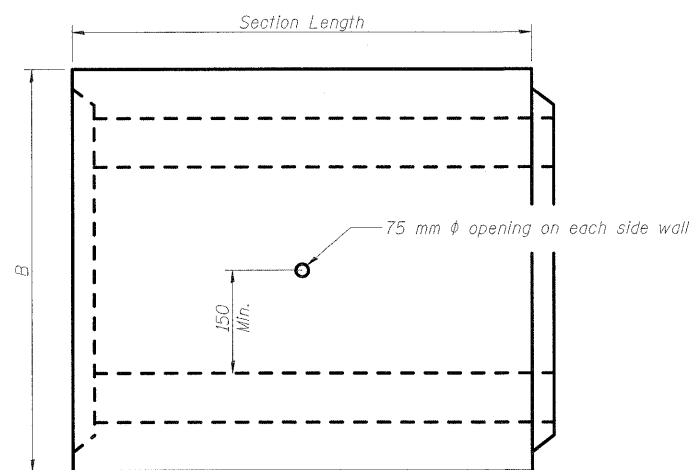
(Typ. Inlet End)

DETAIL B

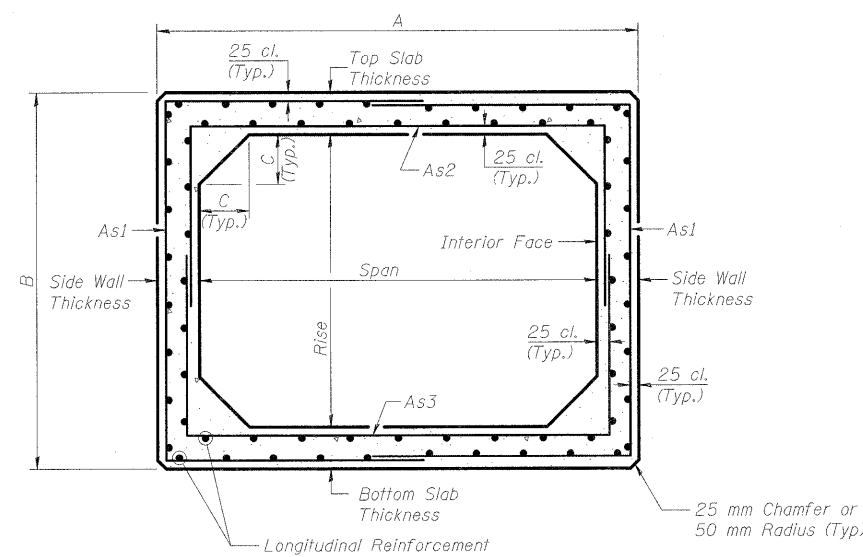
(Typ. Outlet End)

NOTES: Inlet and outlet ends shall be compatible. End detail is subject to variation by fabricator.

Box Culvert No.	Span	Rise	Fill Depth at Shoulder	Design Specifications
8	3000	1650	< 0.6m	M-273M
10	600	450	> 0.6m	M-259M
11	900	600	< 0.6m	M-273M
15	600	450	< 0.6m	M-273M
16	900	450	> 0.6m	M-259M
17	600	600	< 0.6m	M-273M

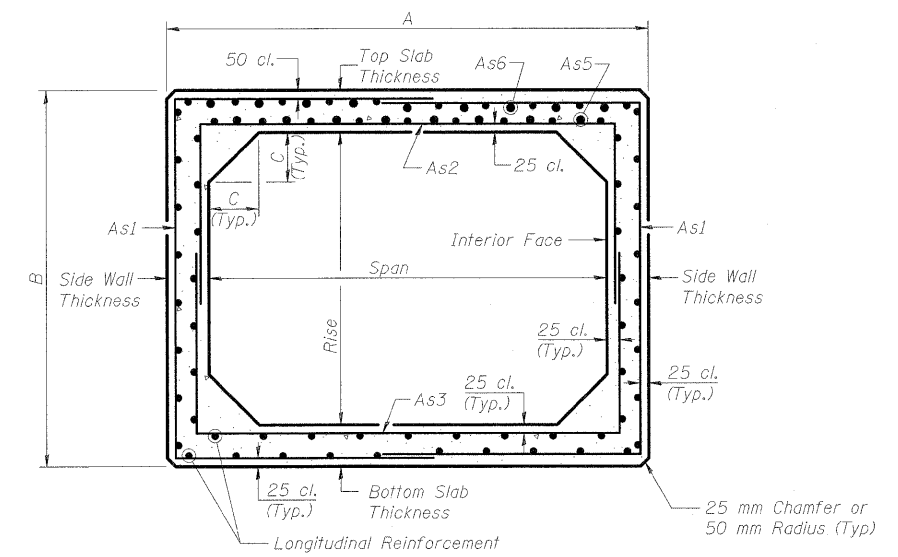


ELEVATION



CROSS SECTION

(AASHTO M-259M)



CROSS SECTION

(AASHTO M-273M)

GENERAL NOTES

1. The Contractor shall determine box culvert dimensions A, B & C and reinforcement requirements which satisfy AASHTO M-259M or M-273M.
2. The terms As1 thru As6 denote the required steel areas for reinforcement as specified in AASHTO M-259M and M-273M.
3. Reinforcement shall be welded wire fabric conforming to ASTM specifications A-185.
4. Splicing and laps shall conform to AASHTO M-259 and ASTM C-789.
5. Lifting holes shall be filled with concrete plugs and mastic after box sections are in place.
6. Edge beam reinforcement shall be provided per requirements of AASHTO M-273M.

PLOT DATE = 12/22/2008
FILE NAME = H:\4420\Contract 94533\SH1.105_S-12.dgn

REVISIONS		ILLINOIS DEPARTMENT OF TRANSPORTATION
NAME	DATE	
LWJ	12-18-08	BOX CULVERT EXTENSIONS PRECAST SECTION DETAILS SCALE NONE DATE DECEMBER 10, 2006 DRAWN BY MLB CHECKED BY MTH