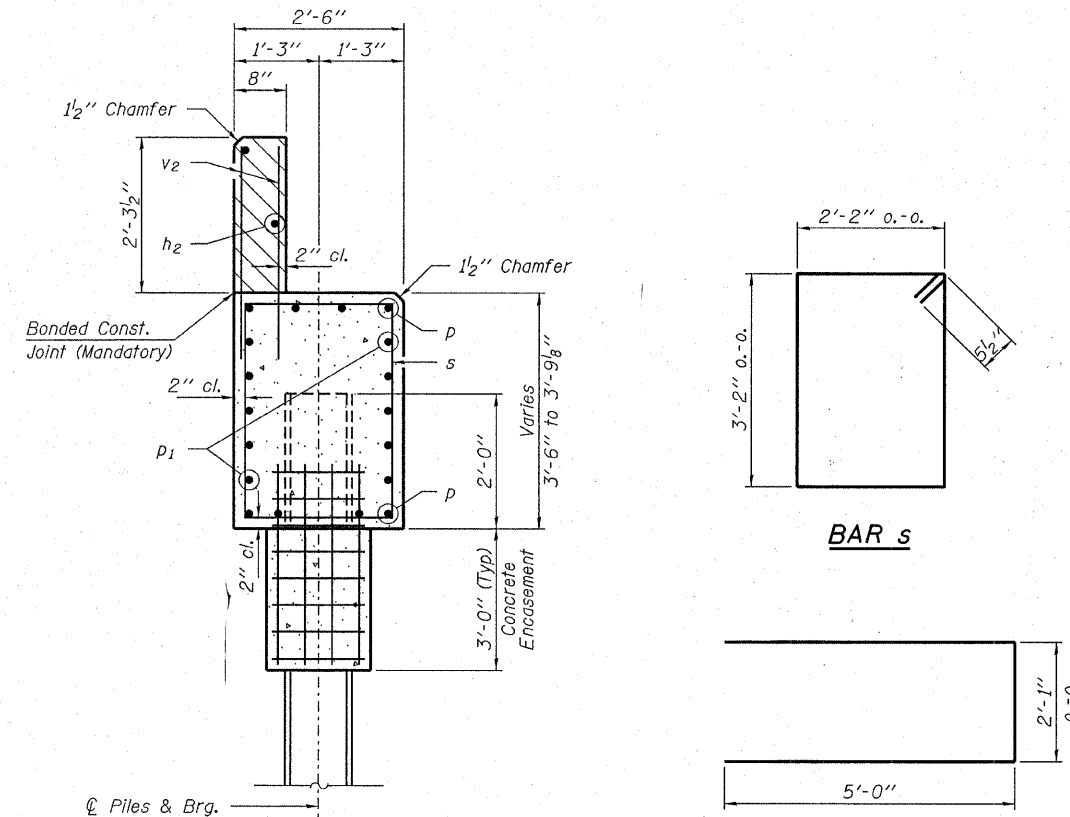
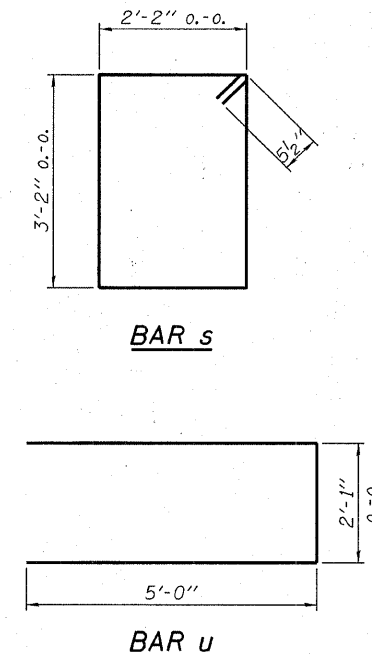


PLAN



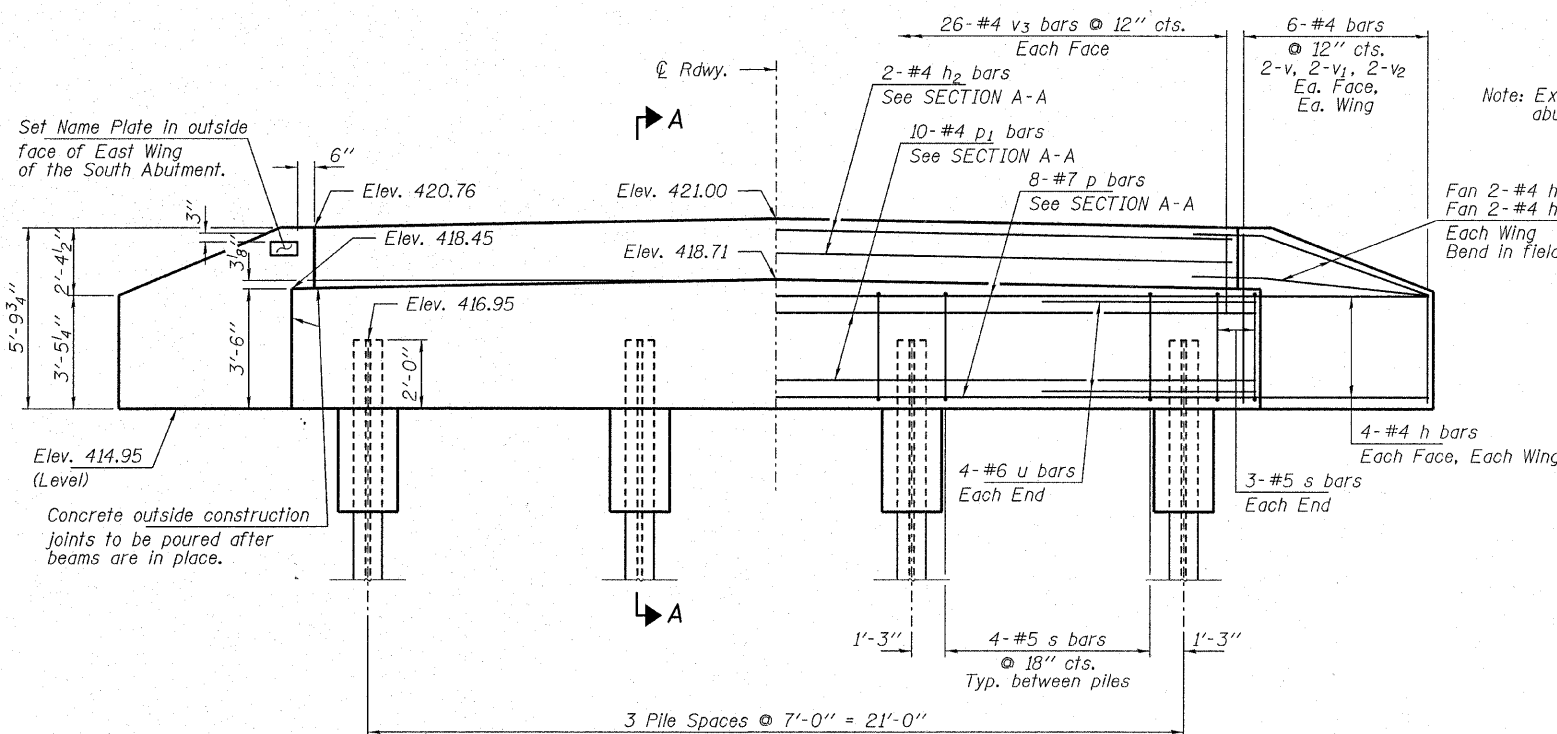
SECTION A-A

Hatched area to be poured after beams are in place.



BAR s

BAR u



ELEVATION

Note: Extend h bars into abutment cap.

Fan 2-#4 h bars (B.F.)
Fan 2-#4 h1 bars (F.F.)
Each Wing
Bend in field.

PILE DATA

Type: Steel HP12x53
No. Req'd. (2 Abuts.): 8
Factored Resistance Available: 209 Kips/Pile
Nominal Req'd Bearing: 418 Kips/Pile
Est. Length: 70 Ft/Pile

Notes: The Steel H-Piles shall be according to AASHTO M270 Grade 50.

BILL OF MATERIAL - 2 ABUTS.

BAR	NO.	SIZE	LENGTH	SHAPE
h	40	#4	7'-0"	—
h1	8	#4	5'-6"	—
h2	4	#4	25'-2"	—
p	16	#7	25'-2"	—
p1	20	#4	25'-2"	—
s	36	#5	11'-7"	□
u	16	#6	12'-1"	—
v	16	#4	5'-1"	—
v1	16	#4	4'-1"	—
v2	16	#4	3'-1"	—
v3	104	#4	3'-2"	—
Concrete Structures			Cu. Yd.	23.6
Concrete Encasement			Cu. Yd.	2.8
Reinforcement Bars			Pound	2,520
Steel Piles HP12x53			Foot	560
Name Plates			Each	1

ABUTMENTS
STRUCTURE NO. 024-3136

DESIGNED - S.M.S.
CHECKED - S.W.M.
DRAWN - D.T.M.
CHECKED - D.T.M.

HAMPTON, LENZINI & RENWICK, INC.
CIVIL & STRUCTURAL ENGINEERS
LAND SURVEYORS
3085 STEVENSON DRIVE, SUITE 201
SPRINGFIELD, ILLINOIS 62703
(217) 546-3400

SHEET NO. 6
9 SHEETS

C.H.	SECTION	COUNTY	TOTAL SHEETS	SHEET NO.
4	06-00061-00-BR	EDWARDS	13	10
CONTRACT NO. 95571				
FED. ROAD DIST. NO. ILLINOIS FED. AID PROJECT				

PROJECT NUMBER: 08.0184.130 DATE: 11/05/08