

**INDEX OF SHEETS**

SHEET NO.	DESCRIPTION
1	TITLE SHEET & SUMMARY OF QUANTITIES
2	PLAN & PROFILE, TYPICAL SECTIONS, GENERAL NOTES & STONE RIPRAP DITCH DESIGN
3-4	ROADWAY CROSS SECTIONS
5-13	BRIDGE DESIGN

**STANDARDS**

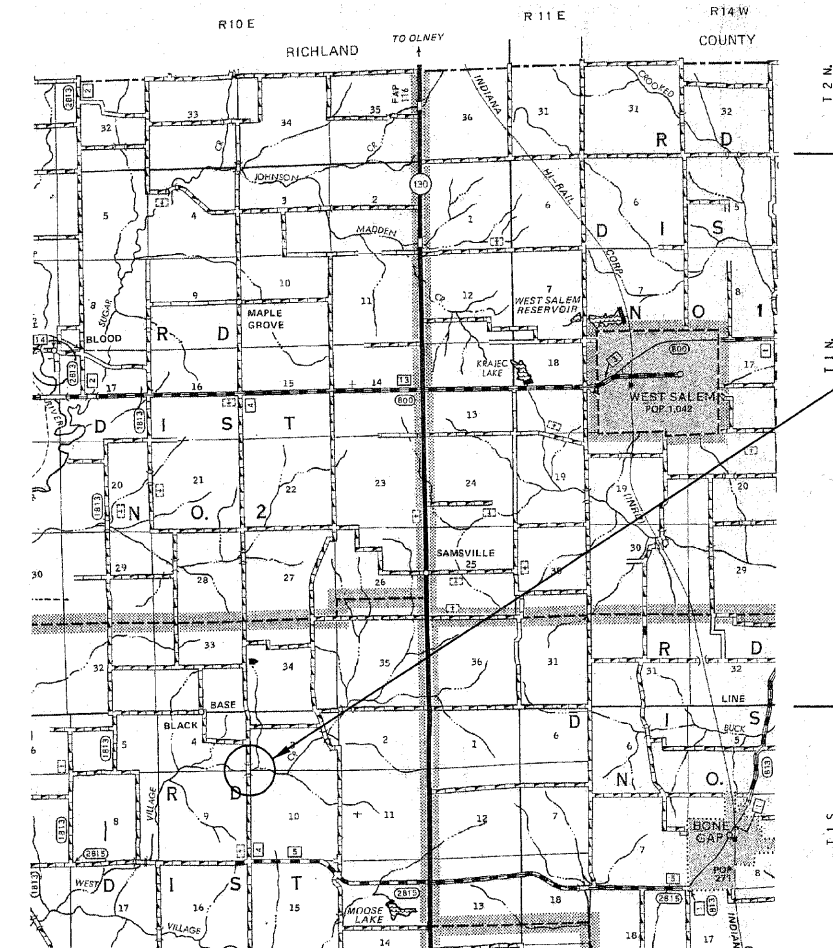
000001-05	STANDARD SYMBOLS, ABBREVIATIONS & PATTERNS (8 SHEETS)
280001-04	TEMPORARY EROSION CONTROL SYSTEMS (2 SHEETS)
666001-01	RIGHT OF WAY MARKERS
701901-01	TRAFFIC CONTROL DEVICES (3 SHEETS)
B.L.R. 21-8	TYPICAL APPLICATION OF TRAFFIC CONTROL DEVICES FOR CONSTRUCTION ON RURAL LOCAL HIGHWAYS
B.L.R. 22-6	TYPICAL APPLICATION OF TRAFFIC CONTROL DEVICES FOR CONSTRUCTION ON RURAL LOCAL HIGHWAYS (TWO-LANE TWO-WAY RURAL TRAFFIC) (ROAD CLOSED TO THRU TRAFFIC)

**SUMMARY OF QUANTITIES**

QUANTITY	UNIT	ITEM	X081-2A CODE NO.
710.00	CU YD	EARTH EXCAVATION	20200100
348.00	CU YD	CHANNEL EXCAVATION	20300100
126.00	CU YD	FURNISHED EXCAVATION	20400800
0.60	ACRE	SEEDING, CLASS 2 (SPECIAL)	25001000
7.00	EACH	TEMPORARY DITCH CHECKS	28000300
16.00	TON	AGGREGATE (EROSION CONTROL)	28001000
300.00	TON	STONE DUMPED RIPRAP, CLASS A4	28100807
35.00	TON	STONE RIPRAP DITCH	28102600
365.00	TON	AGGREGATE SURFACE COURSE, TYPE B	40200800
1.00	EACH	REMOVAL OF EXISTING STRUCTURES	50100100
23.60	CU YD	CONCRETE STRUCTURES	50300225
2.80	CU YD	CONCRETE ENCASEMENT	50300280
1536.00	SO FT	PRECAST PRESTRESSED CONCRETE DECK BEAMS (27" DEPTH)	50400505
2520.00	POUND	REINFORCEMENT BARS	50800105
123.00	FOOT	STEEL RAILING, TYPE S1	50900205 *
560.00	FOOT	FURNISHING STEEL PILES HP12X53	51201600
560.00	FOOT	DRIVING PILES	51202305
1.00	EACH	NAME PLATES	51500100
40.00	FOOT	PIPE CULVERTS, CLASS D, TYPE 1 36"	54200241
10.00	EACH	FURNISHING AND ERECTING RIGHT-OF-WAY MARKERS	66600105
1.00	L SUM	MOBILIZATION	67100100

\* SPECIALTY ITEMS

DESIGN DESIGNATION:  
DESIGN SPEED: 30 MPH  
HIGHWAY CLASS - LOCAL ROAD  
EXISTING STRUCTURE NO.: 024-3082  
PROPOSED STRUCTURE NO.: 024-3136  
CURRENT A.D.T. = 200  
CONTRACT NO. 95571



LAYOUT  
APPROXIMATE SCALE 1 INCH = 1 MILE



GROSS LENGTH	575.00 FT	0.109 MILES
OMISSIONS	0.00 FT	0.00 MILES
NET LENGTH	575.00 FT	0.109 MILES

PLAN	1" = 50'	
PROFILE	1" = 50'	
PROFILE VERT.	1" = 5'	

SECTION 06-00061-00-BR  
BEGINS STATION 2+00

STATION 5+00, STRUCTURE NO. 024-3136  
A 64' LONG SINGLE SPAN PRECAST  
PRESTRESSED CONCRETE DECK BEAM BRIDGE  
(27" DEPTH), 24' ROADWAY, 0° SKEW.

SECTION 06-00061-00-BR  
ENDS STATION 7+75

APPROVED JAN 28<sup>TH</sup> 20 09  
[Signature]  
COUNTY ENGINEER

PASSED 2/5 20 09  
[Signature]  
DISTRICT SEVEN ENGINEER OF  
LOCAL ROADS & STREETS

Releasing For  
Bid Based on  
Limited Review 2/5 20 09  
[Signature]  
DEPUTY DIRECTOR OF HIGHWAYS,  
REGION FOUR ENGINEER

STATE OF ILLINOIS  
DEPARTMENT OF TRANSPORTATION

WEST VILLAGE CREEK  
COUNTY HIGHWAY 4  
EDWARDS COUNTY, ILLINOIS

SHEET TITLE:

TITLE SHEET

SCALE:	VARIES
BY:	AMM
DATE:	2/26/09
REV:	

1 OF 13  
SHEETS

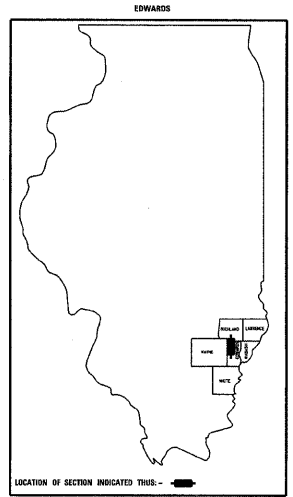
SHEET NO.  
1

C.H.	SECTION	COUNTY	TOTAL SHEETS	SHEET NO.
4	06-00061-00-BR	EDWARDS	13	1

FED. ROAD DIST. NO. 7 ILLINOIS  
PROJECT \* BROS-047(031)  
LEC JOB \* H081008ED

FED. AID PROJECT  
CONTRACT # 95571  
WEST VILLAGE CREEK

323 W. 3RD ST.  
P.O. BOX 160  
MT. CARMEL, IL  
62863  
PHONE:  
(618)-262-8661  
FAX:  
(618)-263-3327



PROFESSIONAL DESIGN FIRM  
LAND SURVEY &  
PROFESSIONAL ENGINEERING CORPORATION  
184-00887  
(82-032435)(35-002769)



AARON M. MEFFORD  
NAME  
[Signature]  
SIGNATURE  
1-27-09  
DATE  
11-30-09  
EXPIRES

**GENERAL NOTES:**

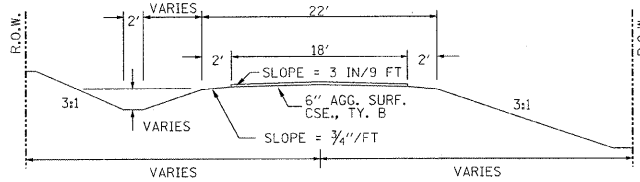
THIS SECTION SHALL BE CONSTRUCTED IN ACCORDANCE WITH THE PLANS, SPECIAL PROVISIONS AND "STANDARD SPECIFICATIONS FOR ROAD AND BRIDGE CONSTRUCTION", ADOPTED JANUARY 1, 2007.

THE WORK INVOLVED ON THIS SECTION CONSISTS OF THE REMOVAL OF THE EXISTING STRUCTURE, THE CONSTRUCTION OF A 64 FOOT LONG SINGLE SPAN PRECAST, PRESTRESSED CONCRETE DECK BEAM BRIDGE, EARTH APPROACHES, AGGREGATE SURFACE COURSE AND OTHER MISCELLANEOUS ITEMS NECESSARY TO COMPLETE THIS SECTION.

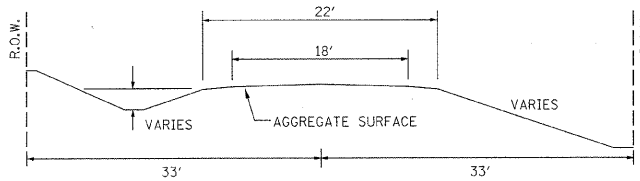
ALL ELEVATIONS ARE BASED ON U.S.G.S. MEAN SEA LEVEL DATUM.

IT SHALL BE THE CONTRACTOR'S RESPONSIBILITY TO CONTACT ALL THE UTILITIES, AFFECTING THE PROJECT, PRIOR TO CONSTRUCTION.

**TYPICAL CROSS SECTION PROPOSED**



**TYPICAL CROSS SECTION EXISTING**



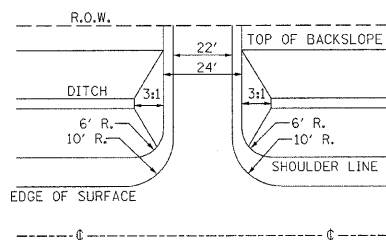
**UTILITIES:**

J.U.L.T.E. 1-800-892-0123

VERIZON  
1-618-395-6191

WAYNE-WHITE ELECTRIC CO-OP  
1-618-842-2196

**FIELD ENTRANCE DETAIL**



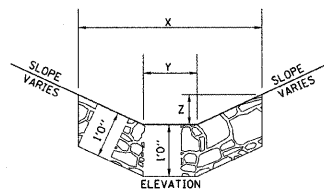
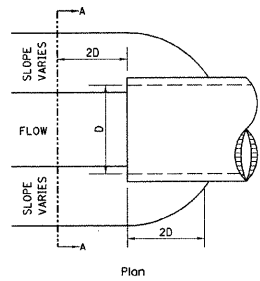
NOTE: CONSTRUCT SPECIAL DITCH

STA 3+00 TO STA 4+74.6 LT  
STA 3+00 TO STA 4+75.8 RT  
STA 5+24.2 TO STA 7+00 LT  
STA 5+25 TO STA 7+50 RT

NOTE: CONSTRUCT STONE RIPRAP DITCH

STA 5+24 LT TO STA 5+80 LT (0.62 TON/LIN FT)  
35 TON STONE RIPRAP DITCH ALLOWED IN PROPOSAL.

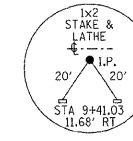
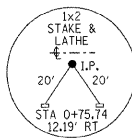
**STONE RIPRAP DITCH DESIGN**



NOTE:

BOTTOM OF DITCH	SLOPE	TON/LIN. FT
1 1/2h	2h 3:1	
2 FT	X= 5 FT 6 FT 8 FT	
Y= 2 FT	2 FT 2 FT	
Z= 1 FT	1 FT 1 FT	
	0.40 0.48 0.62	

NOTE: FOR PLACEMENT, QUALITY GRADATION AND OTHER MISCELLANEOUS REQUIREMENTS FOR STONE RIPRAP DITCH-SEE SPECIAL PROVISIONS.

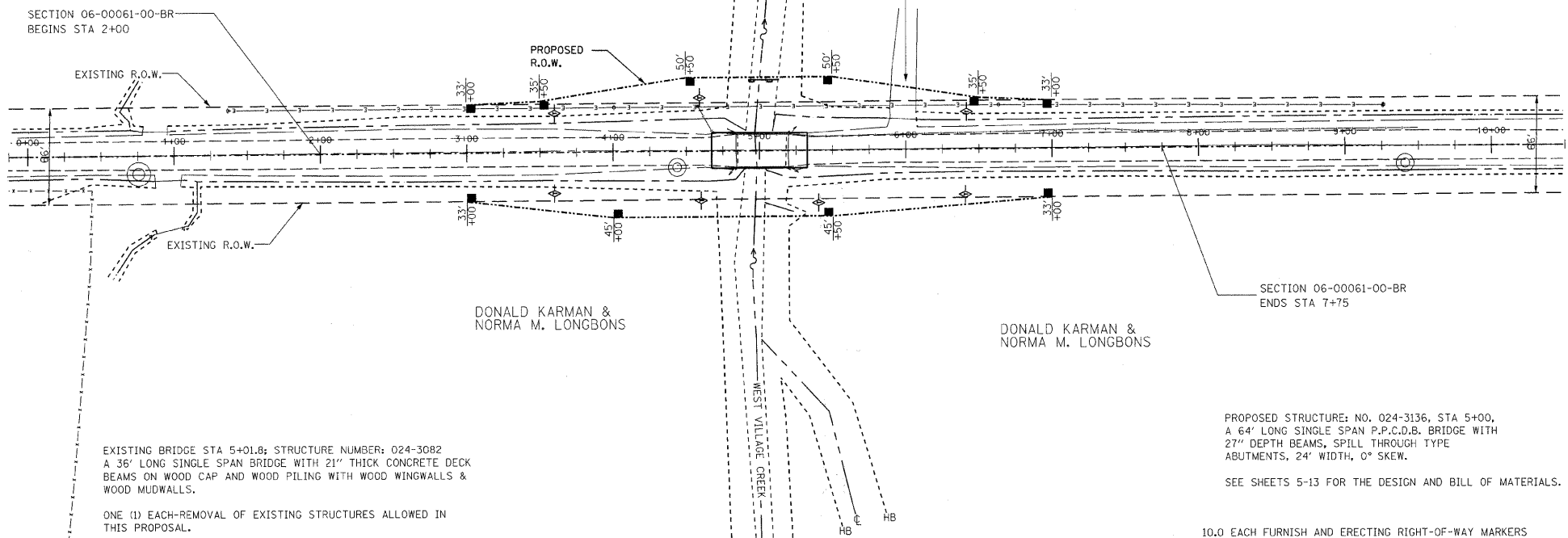


DAVID K. URFER TRUSTEE  
D.K. URFER REVOCABLE TRUST

RANDALL D. &  
SANDRA L. LONGBONS

DONALD KARMAN &  
NORMA M. LONGBONS

DONALD KARMAN &  
NORMA M. LONGBONS



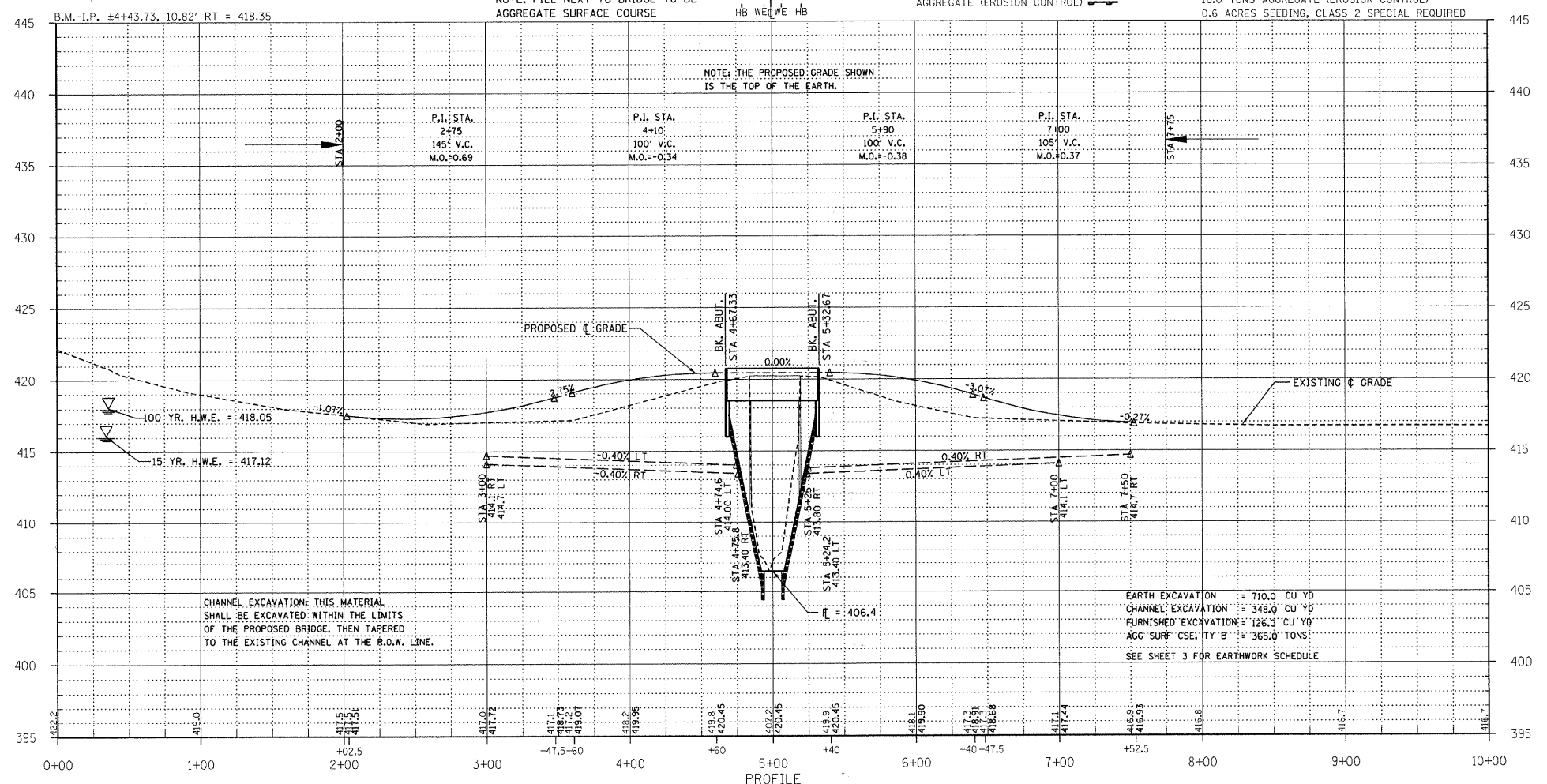
EXISTING BRIDGE STA 5+01.8; STRUCTURE NUMBER: 024-3082  
A 36' LONG SINGLE SPAN BRIDGE WITH 21" THICK CONCRETE DECK BEAMS ON WOOD CAP AND WOOD PILING WITH WOOD WINGWALLS & WOOD MUDWALLS.

ONE (1) EACH-REMOVAL OF EXISTING STRUCTURES ALLOWED IN THIS PROPOSAL.

NOTE: FILL NEXT TO BRIDGE TO BE  
AGGREGATE SURFACE COURSE

TEMPORARY DITCH CHECKS  
AGGREGATE (EROSION CONTROL)

10.0 EACH FURNISH AND ERECTING RIGHT-OF-WAY MARKERS  
7.0 EACH TEMPORARY DITCH CHECKS  
16.0 TONS AGGREGATE (EROSION CONTROL)  
0.6 ACRES SEEDING, CLASS 2 SPECIAL REQUIRED



CHANNEL EXCAVATION: THIS MATERIAL SHALL BE EXCAVATED WITHIN THE LIMITS OF THE PROPOSED BRIDGE, THEN TAPERED TO THE EXISTING CHANNEL AT THE R.O.W. LINE.

EARTH EXCAVATION = 710.0 CU YD  
CHANNEL EXCAVATION = 348.0 CU YD  
FURNISHED EXCAVATION = 126.0 CU YD  
AGG SURF CSE, TY B = 365.0 TONS!  
SEE SHEET 3 FOR EARTHWORK SCHEDULE

C.H.	SECTION	COUNTY	TOTAL SHEETS	SHEET NO.
4	06-00061-00-BR	EDWARDS	13	2

323 W. 3RD ST.  
P.O. BOX 160  
MT. CARMEL, IL  
62863

PHONE:  
(618)-262-8651  
FAX:  
(618)-263-3327

405 W. STATE ST.  
SUITE 1  
PRINCETON, IN  
47670

PHONE:  
(812)-386-7611  
FAX:  
(812)-385-2812



PROFESSIONAL DESIGN FIRM  
LAND SURVEY &  
PROFESSIONAL ENGINEERING CORPORATION

184-000897  
(62-032435)(35-002769)



AARON M. MEFFORD  
NAME

*Aaron Mefford*  
SIGNATURE

1-27-09  
DATE

11-30-09  
EXPIRES

WEST VILLAGE CREEK  
COUNTY HIGHWAY 4  
EDWARDS COUNTY, ILLINOIS

SHEET TITLE:

PLAN & PROFILE

SCALE: VARIES

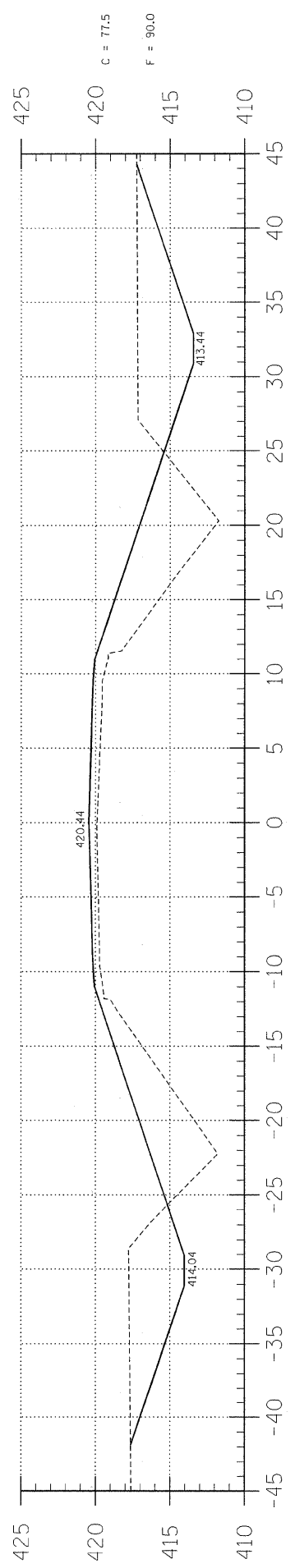
BY: AMM

DATE: 11/24/08

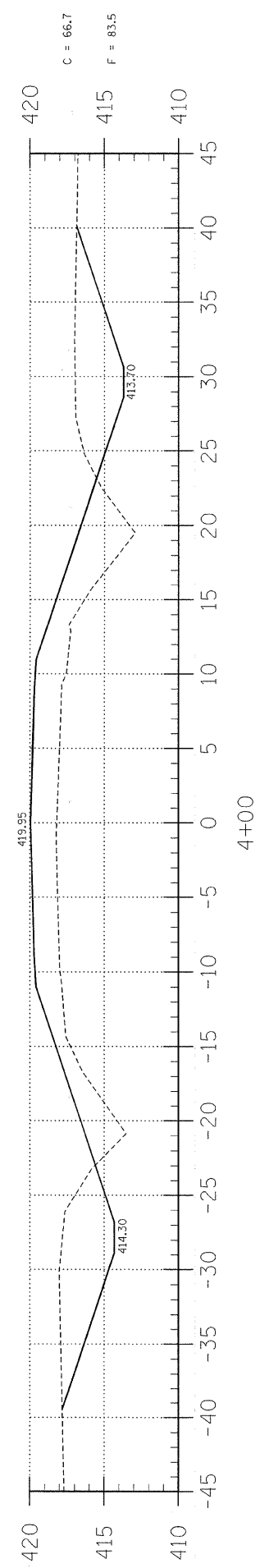
REV:

2 OF 13 SHEETS

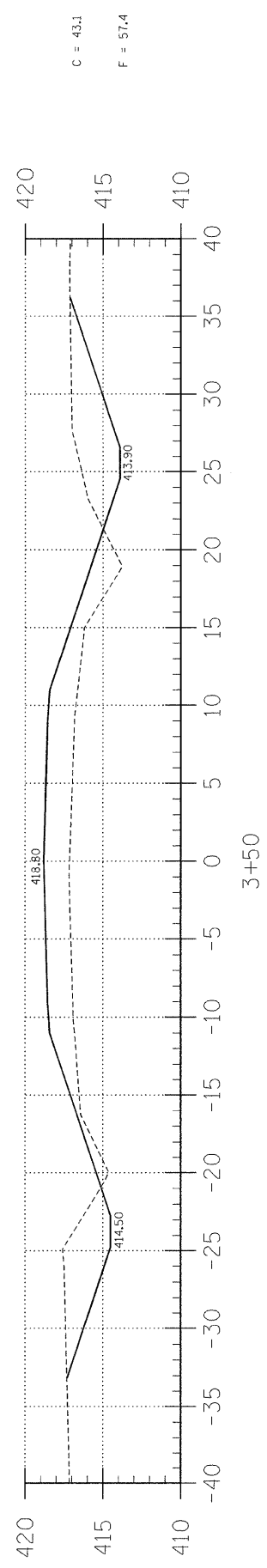
SHEET NO. 2



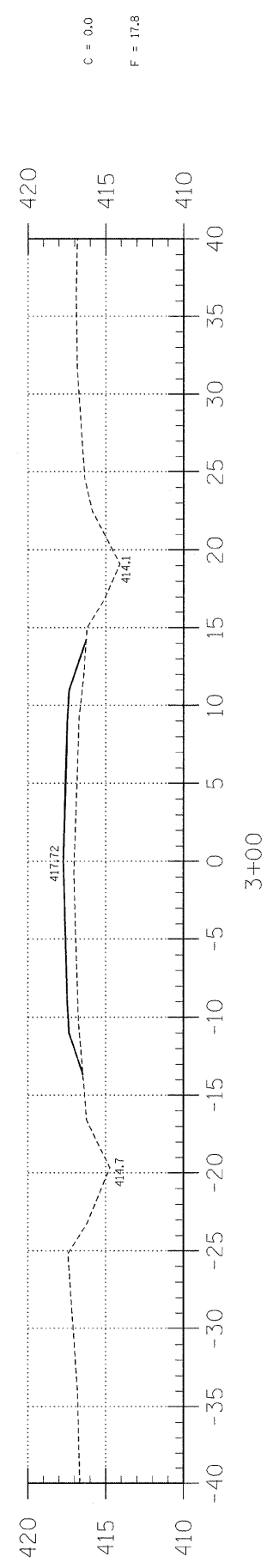
4+65



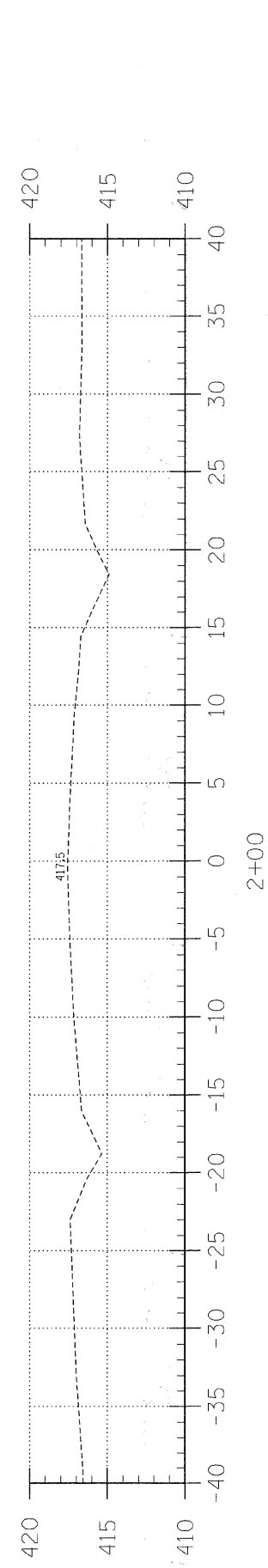
4+00



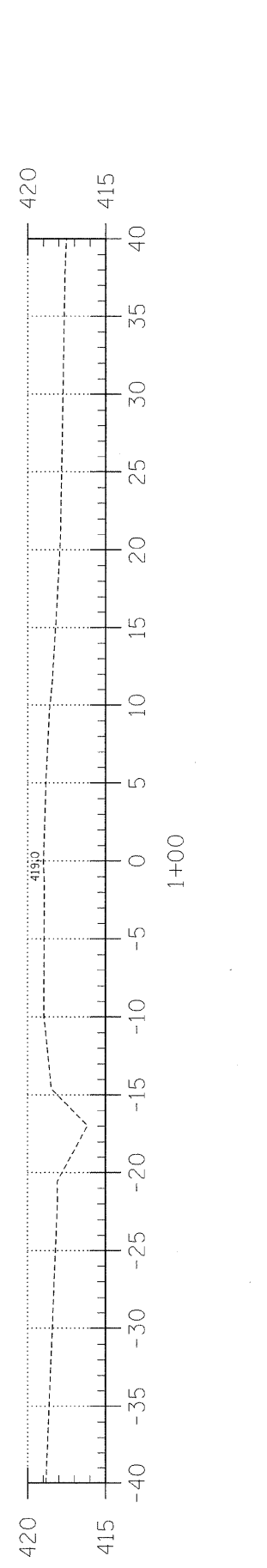
3+50



3+00



2+00

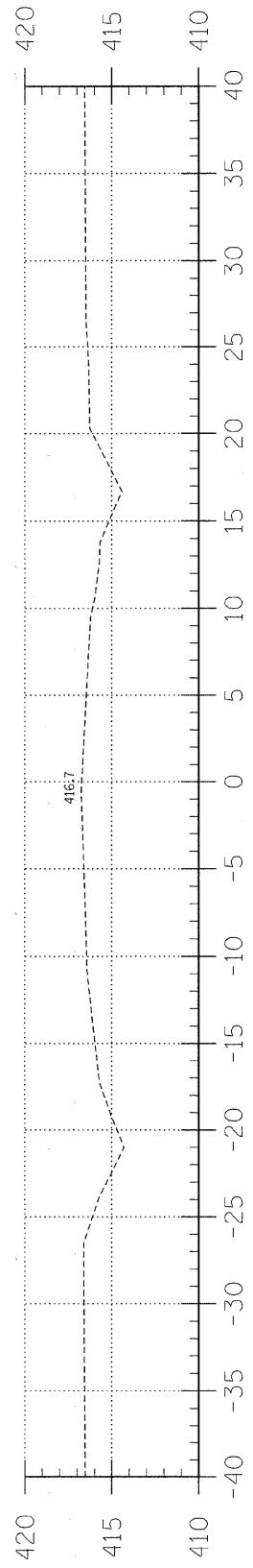


1+00

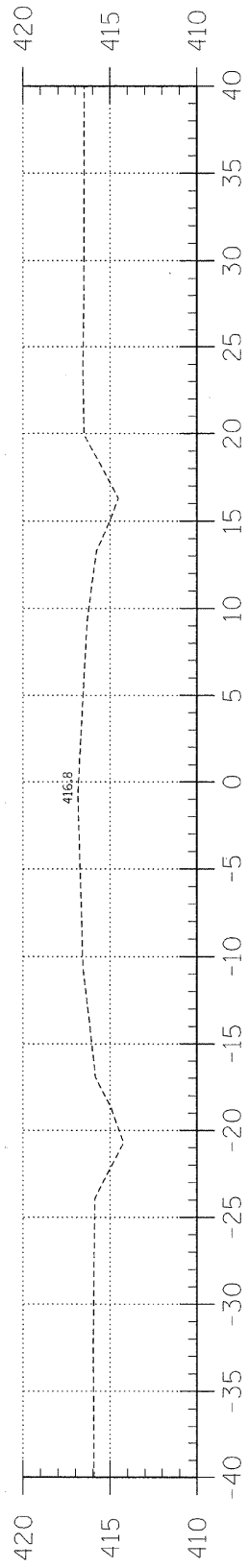
EARTHWORK SCHEDULE

LOCATION	EARTH EXCAVATION		CHANNEL EXCAVATION		ESTIMATED UNSUITABLE MATERIAL		SUITABLE MATERIAL ADJUSTED FOR SHRINKAGE		EMBANKMENT		EARTHWORK BALANCE WASTE (+) OR SHORTAGE (-)	
	CUBIC YARD	CUBIC YARD	CUBIC YARD	CUBIC YARD	CUBIC YARD	CUBIC YARD	CUBIC YARD	CUBIC YARD	CUBIC YARD	CUBIC YARD	CUBIC YARD	CUBIC YARD
STA 0+00 TO 4+67.3	312.2	0.0	0.0	0.0	0.0	234.1	234.1	442.6	-208.5			
STA 4+67.3 TO 5+32.7	0.0	348.3	0.0	0.0	174.1	130.7	0.0	0.0	330.9			
STA 5+32.7 TO 10+00	398.2	0.0	0.0	0.0	0.0	298.6	298.6	15.8	-32.3			
1 FIELD ENTRANCE	0.0	0.0	0.0	0.0	0.0	0.0	0.0	15.8	-15.8			
TOTAL	710.4	348.3	0.0	0.0	174.1	663.4	663.4	789.3	-125.9			

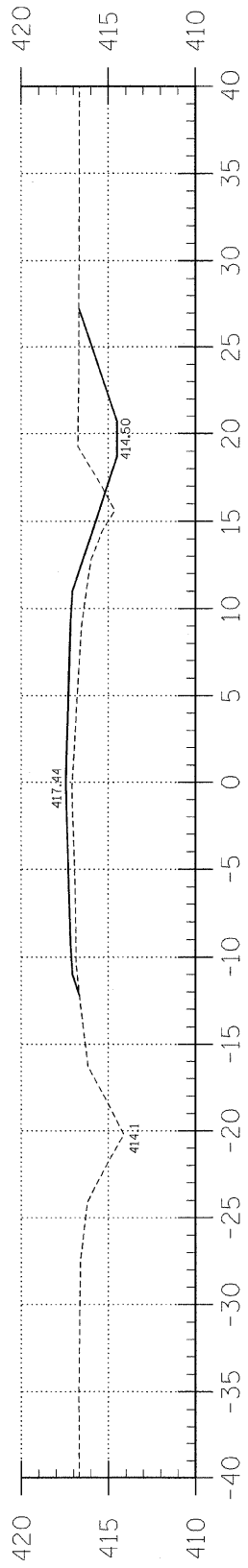
C.H.	SECTION	COUNTY	TOTAL SHEETS	SHEET NO.
4	06-00061-00-BR	EDWARDS	13	3
FED. ROAD DIST. NO. 7 ILLINOIS		FED. AID PROJECT		323 W. 3RD ST. P.O. BOX 160 MT. CARMEL, IL 62863
PROJECT# BROS-047(031)		CONTRACT# 95571		PHONE: (618)-262-8651
JOB NO. C-97-071-09		WEST VILLAGE CREEK		FAX: (618)-263-3327
LEC JOB # H081008ED				
405 W. STATE ST SUITE 1 PRINCETON, IN 47670				
PHONE: (812)-386-7611				
FAX: (812)-385-2812				
<b>LAMAC</b> ENGINEERING CO.				
PROFESSIONAL DESIGN FIRM LAND SURVEY & PROFESSIONAL ENGINEERING CORPORATION 184-000887 (62-032435)(35-002769)				
AARON M. MEFFORD REGISTERED PROFESSIONAL ENGINEER OF ILLINOIS 56284				
NAME AARON M. MEFFORD				
SIGNATURE <i>Aaron Mefford</i>				
DATE 1-27-09				
EXPIRES 11/30/09				
WEST VILLAGE CREEK COUNTY HIGHWAY 4 EDWARDS COUNTY, ILLINOIS				
SHEET TITLE:				
CROSS-SECTIONS				
SCALE:	1" = 5'			
BY:	AMM			
DATE:	1/27/09			
REV:				
3	OF	13		
SHEETS				
SHEET NO. <b>3</b>				



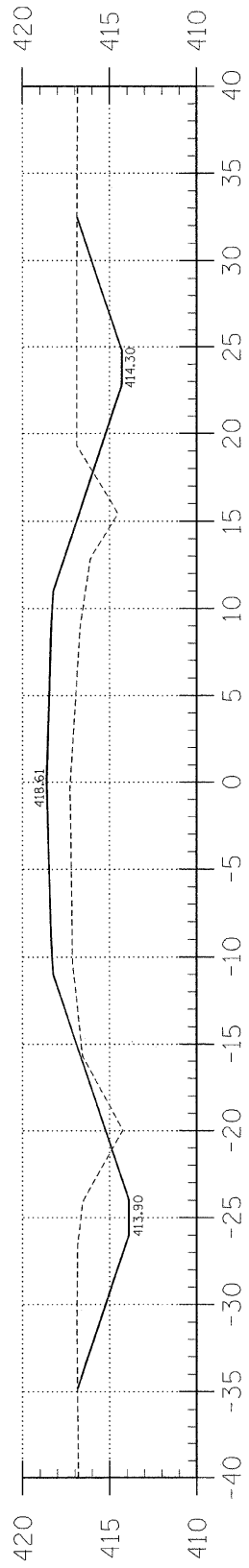
9+00



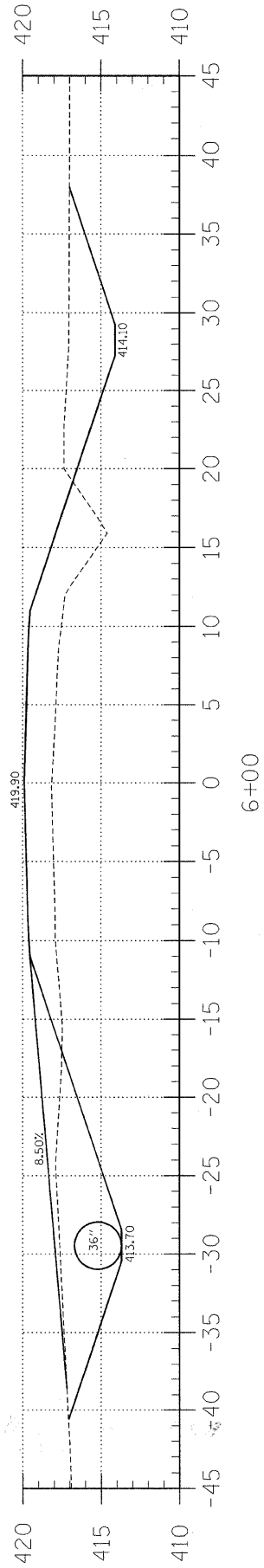
8+00



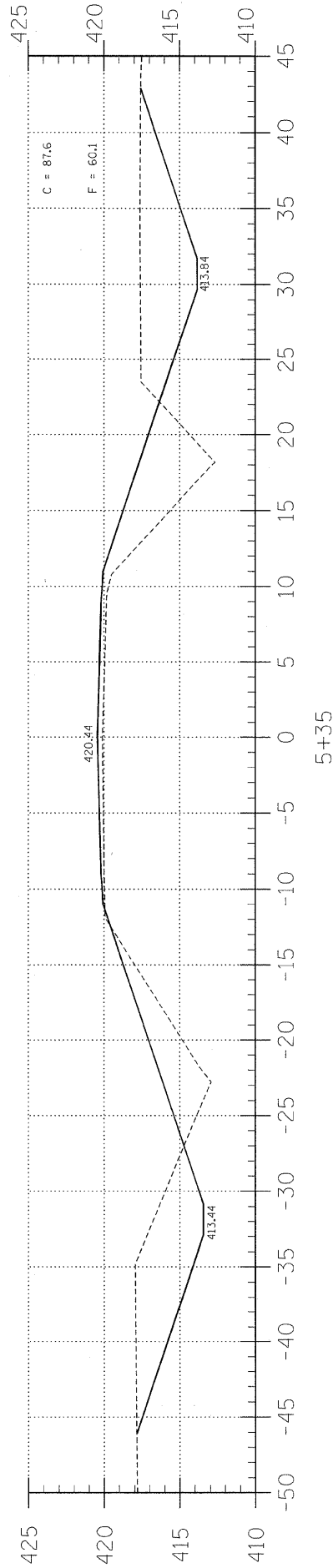
7+00



6+50



6+00



5+35

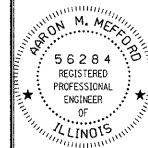
C.H.	SECTION	COUNTY	TOTAL SHEETS	SHEET NO.
4	06-00061-00-BR	EDWARDS	13	4
FED. ROAD DIST. NO. 7 ILLINOIS		FED. AID PROJECT		
PROJECT# BROS-047(031)		CONTRACT# 95571		
JOB NO. C-97-071-09		WEST VILLAGE CREEK		
LEC JOB # H081008ED				

323 W. 3RD ST.  
P.O. BOX 160  
MT. CARMEL, IL  
62863  
PHONE:  
(618)-262-8651  
FAX:  
(618)-263-3327

405 W. STATE ST  
SUITE 1  
PRINCETON, IN  
47670  
PHONE:  
(812)-386-7611  
FAX:  
(812)-385-2812



PROFESSIONAL  
DESIGN FIRM  
LAND SURVEY &  
PROFESSIONAL  
ENGINEERING  
CORPORATION  
184-000887  
(62-032435)(35-002769)



AARON M. MEFFORD  
NAME  
*Aaron Mefford*  
SIGNATURE  
1-27-09  
DATE  
11/30/08  
EXPIRES

WEST VILLAGE CREEK  
COUNTY HIGHWAY 4  
EDWARDS COUNTY, ILLINOIS

SHEET TITLE:

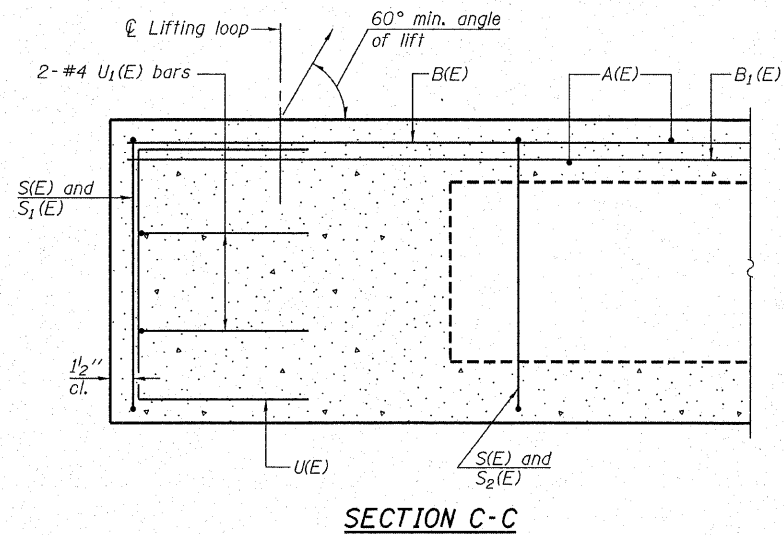
CROSS-SECTIONS

SCALE: 1" = 5'  
BY: AMM  
DATE: 12/09  
REV:

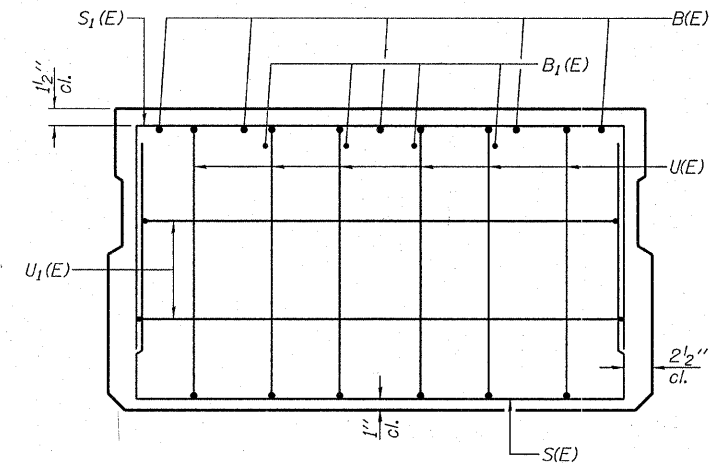
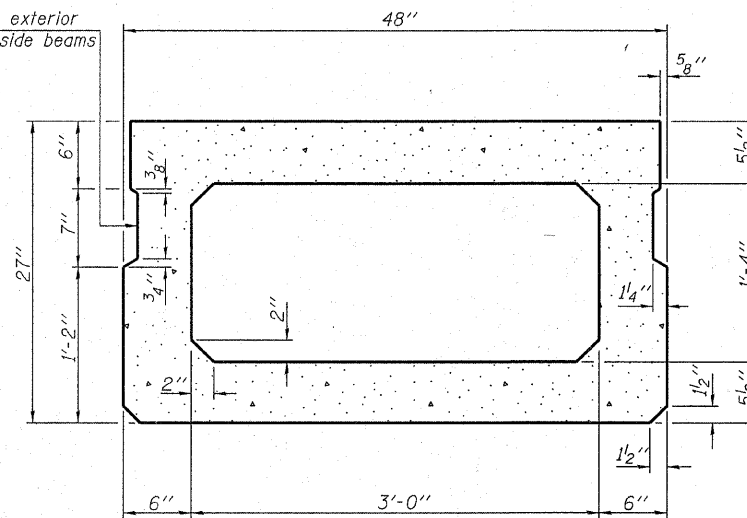
4 OF 13  
SHEETS

SHEET NO.  
4





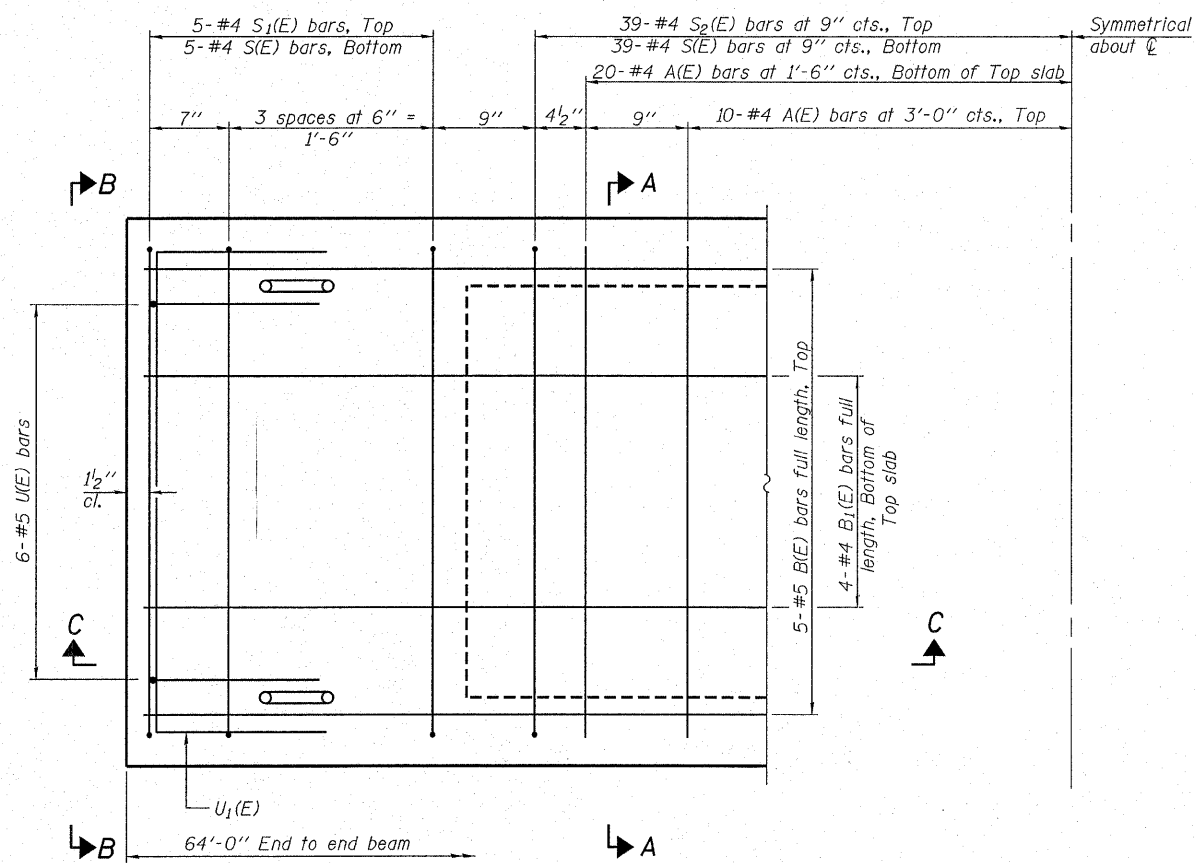
Omit key on exterior face of outside beams



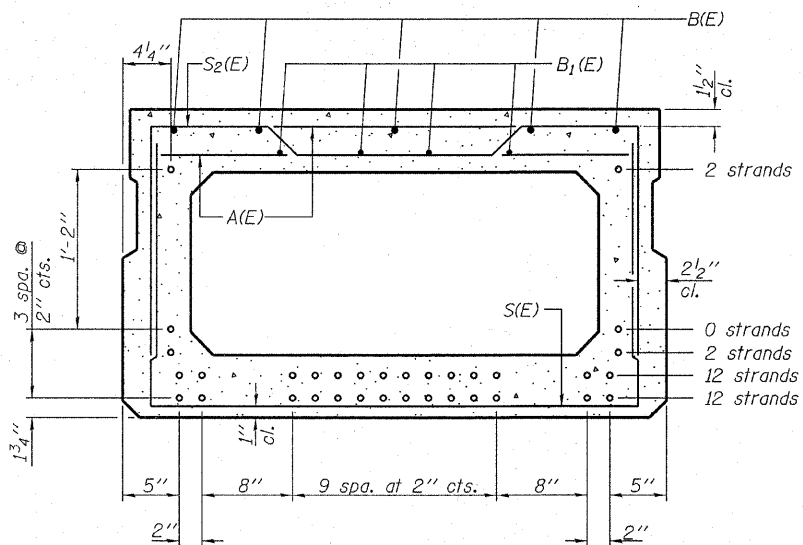
SECTION C-C

SECTION A-A  
(Showing dimensions)

VIEW B-B



PLAN VIEW



SECTION A-A

(Showing reinforcement and permissible strand locations)

Note: Place the number of strands specified in each row symmetrically about the centerline of beam in the permissible strand locations shown.

**BAR LIST**  
**ONE BEAM ONLY**

(For information only)

Bar	No.	Size	Length	Shape
A(E)	60	#4	3'-7"	—
B(E)	5	#5	63'-8"	—
B1(E)	4	#4	63'-8"	—
S(E)	88	#4	7'-5"	┌
S1(E)	10	#4	6'-11"	┌
S2(E)	78	#4	7'-2"	┌
U(E)	12	#5	4'-6"	┌
U1(E)	4	#4	6'-0"	┌

Note: See sheet 3 & 4 of 9 for additional details and Bill of Material.

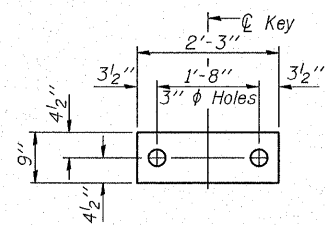
Note: Spacing of S(E) and S2(E) bars may be adjusted up to 4" in the immediate area of the transverse tie diaphragms to miss the block outs for the transverse ties.

DESIGNED - S.M.S.
CHECKED - S.W.M.
DRAWN - D.T.M.
CHECKED - D.T.M.

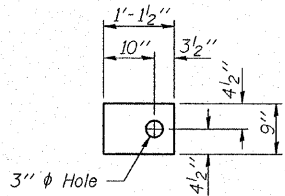
PD-2748-0 5-16-08

**SUPERSTRUCTURE**  
**27" X 48" PPC DECK BEAM**  
**STRUCTURE NO. 024-3136**

HAMPTON, LENZINI & RENWICK, INC. CIVIL & STRUCTURAL ENGINEERS LAND SURVEYORS 3085 STEVENSON DRIVE, SUITE 201 SPRINGFIELD, ILLINOIS 62703 (217) 546-3400 PROJECT NUMBER: 08.0184.130 DATE: 11/05/08	SHEET NO. 2	C.H.	SECTION	COUNTY	TOTAL SHEETS	SHEET NO.
	9 SHEETS	4	06-00061-00-BR	EDWARDS	13	6
			CONTRACT NO. 95571			
			FED. ROAD DIST. NO. 1 ILLINOIS FED. AID PROJECT			

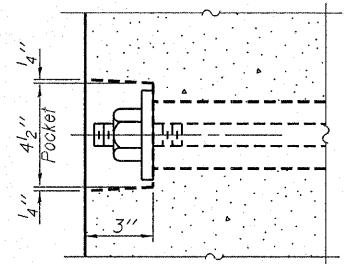


**FABRIC BEARING PAD**  
(Interior - 10 Req'd)

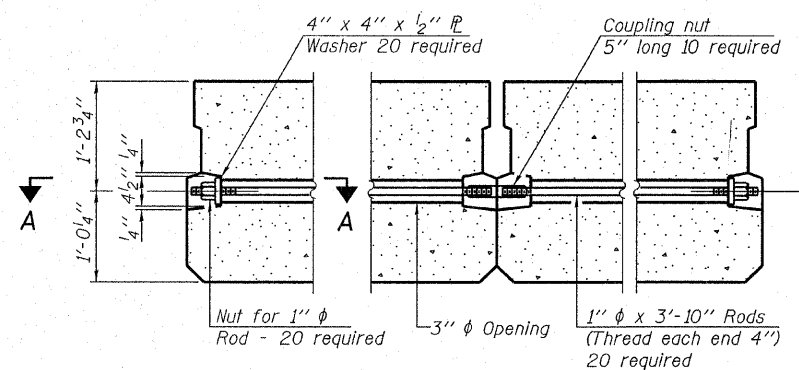


**FABRIC BEARING PAD**  
(Exterior - 4 Req'd)

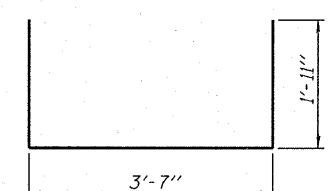
**FIXED**  
Note: Omit holes when using expansion bearings.



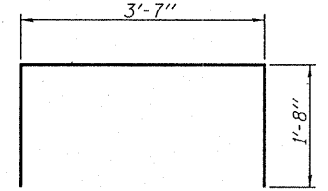
**SECTION A-A**



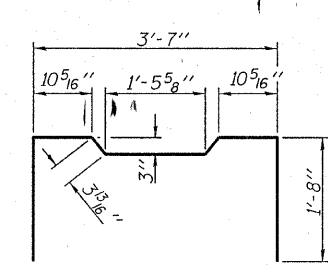
**TYPICAL TRANSVERSE TIE ASSEMBLY**



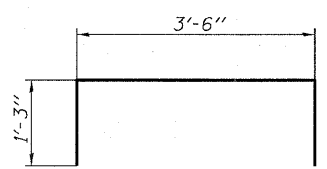
**BAR S1(E)**



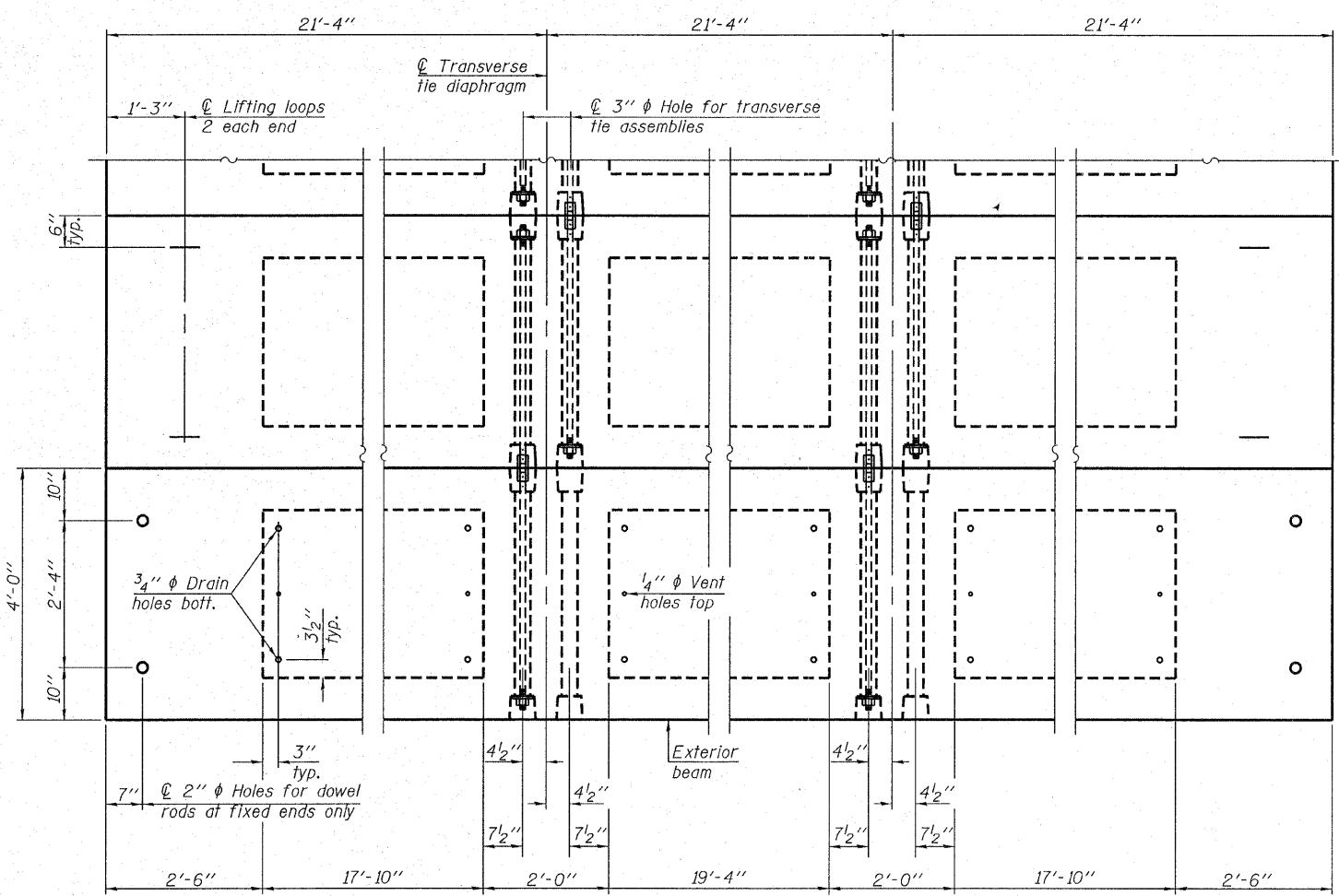
**BAR S2(E)**



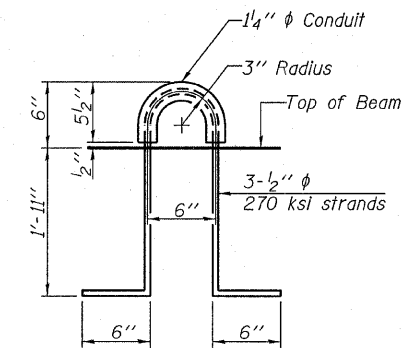
**BAR U1(E)**



**BAR U2(E)**



**PLAN VIEW**



**LIFTING LOOP DETAIL**

**BILL OF MATERIAL**

Precast Prestressed Conc. Deck Bms. (27" depth)	Sq. Ft.	1,536
-------------------------------------------------	---------	-------

Note: Connect beams in pairs with the transverse tie configuration shown.

**NOTES**

Prestressing steel shall be uncoated high strength, low relaxation 7-wire strand, Grade 270. The nominal diameter shall be 1/2" and the nominal cross-sectional area shall be 0.153 sq. in. The 1" rods in the transverse tie assembly shall be tightened to a snug fit and the threads set. Pockets on exterior faces of bridge shall be filled with grout after transverse tie assembly is in place.

Reinforcement bars shall conform to ASTM A 706, Grade 60. (See Special Provisions). Two 3/8" fabric adjusting shims of the dimensions of the exterior bearing pad shall be provided for each bearing pad location.

A minimum 2 1/2" lifting pin shall be used to engage the lifting loops during handling. Corrosion Inhibitor, per Article 1020.05(b)(12) and 1021.06 of the Standard Specifications, shall be used in the concrete for precast prestressed concrete deck beams. Compressive strength of prestressed concrete, f'c, shall be 6000 psi. Compressive strength of prestressed concrete at release, f'ci, shall be 5000 psi.

DESIGNED - S.M.S.
CHECKED - S.W.M.
DRAWN - D.T.M.
CHECKED - D.T.M.

PD-2748-0D 5-16-08

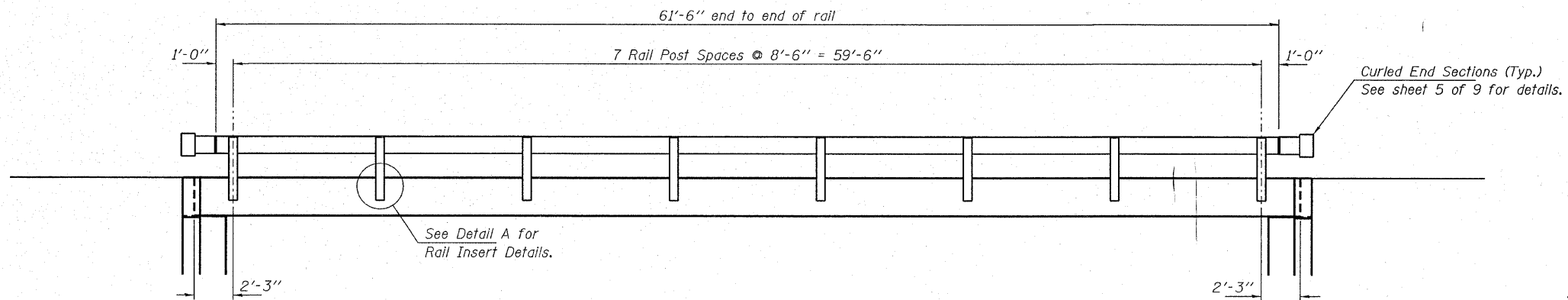
**HAMPTON, LENZINI & RENWICK, INC.**  
CIVIL & STRUCTURAL ENGINEERS  
LAND SURVEYORS

**HLR** 3085 STEVENSON DRIVE, SUITE 201  
SPRINGFIELD, ILLINOIS 62703  
(217) 546-3400

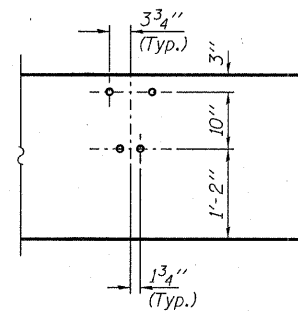
PROJECT NUMBER: 08.0184.130 DATE: 11/05/08

SHEET NO. 3	C.H.	SECTION	COUNTY	TOTAL SHEETS	SHEET NO.
9 SHEETS	4	06-00061-00-BR	EDWARDS	13	7
			CONTRACT NO. 95571		
FED. ROAD DIST. NO.		ILLINOIS FED. AID PROJECT			

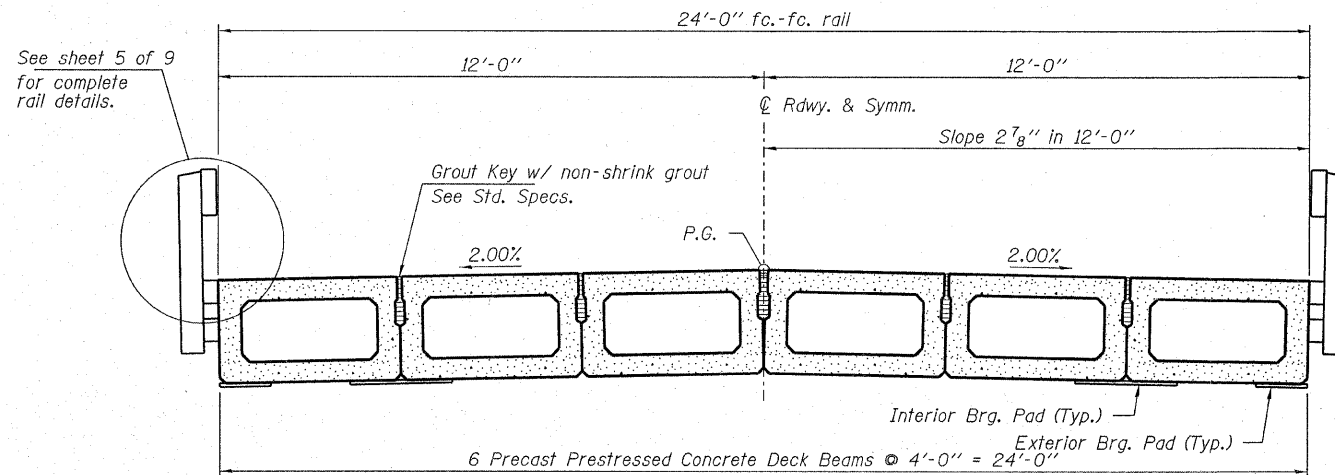
**SUPERSTRUCTURE DETAILS**  
**27" X 48" PPC DECK BEAMS**  
**STRUCTURE NO. 024-3136**



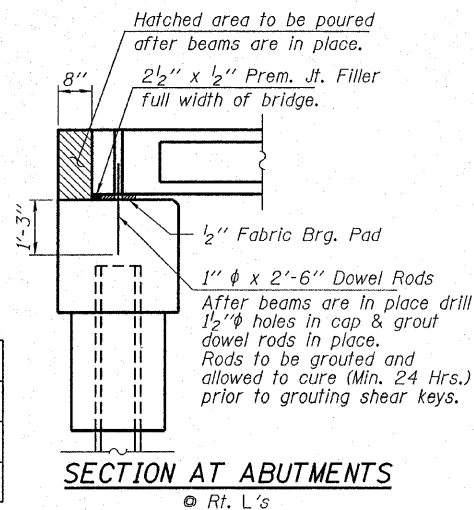
**ELEVATION**  
Showing Rail Post Spaces  
See sheet 5 of 9 for Railing Details.



**DETAIL A**




**CROSS SECTION**  
See sheets 2 & 3 of 9 for Superstructure.



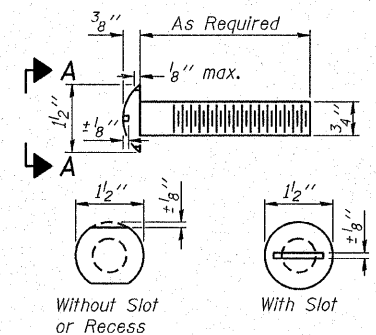
**SECTION AT ABUTMENTS**  
© Rt. L's

DESIGNED - S.M.S.
CHECKED - S.W.M.
DRAWN - D.T.M.
CHECKED - D.T.M.

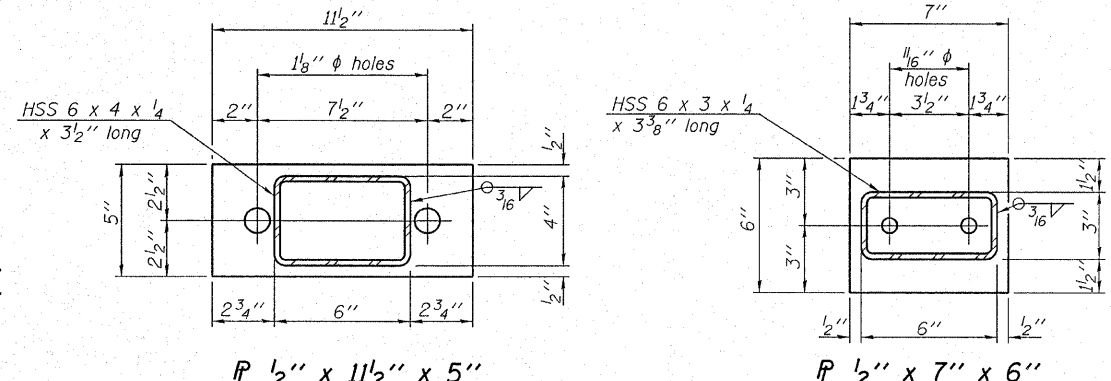
**SUPERSTRUCTURE DETAILS**  
**STRUCTURE NO. 024-3136**

<b>HAMPTON, LENZINI &amp; RENWICK, INC.</b> CIVIL & STRUCTURAL ENGINEERS LAND SURVEYORS  3085 STEVENSON DRIVE, SUITE 201 SPRINGFIELD, ILLINOIS 62703 (217) 546-3400 PROJECT NUMBER: 08.0184.130 DATE: 11/05/08	SHEET NO. 4	C.H.	SECTION	COUNTY	TOTAL SHEETS	SHEET NO.
	9 SHEETS	4	06-00061-00-BR	EDWARDS	13	8
			CONTRACT NO. 95571			
			FED. ROAD DIST. NO.	ILLINOIS	FED. AID PROJECT	



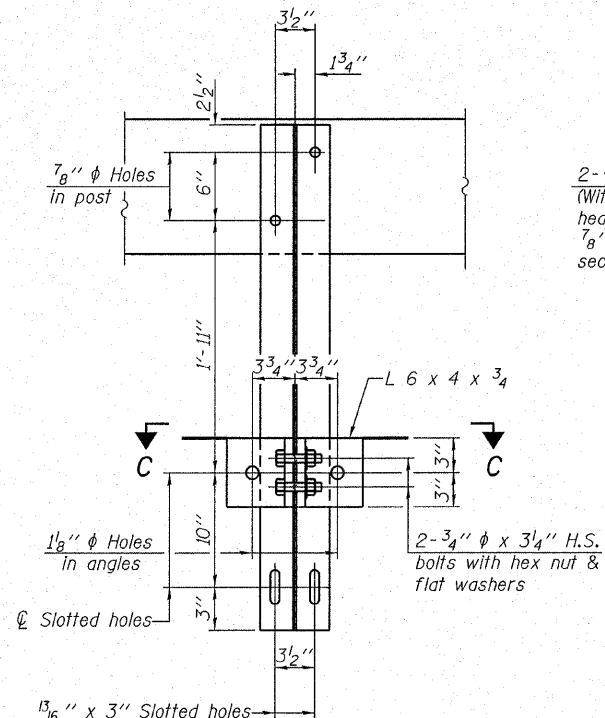


VIEW A-A ROUND HEAD BOLT

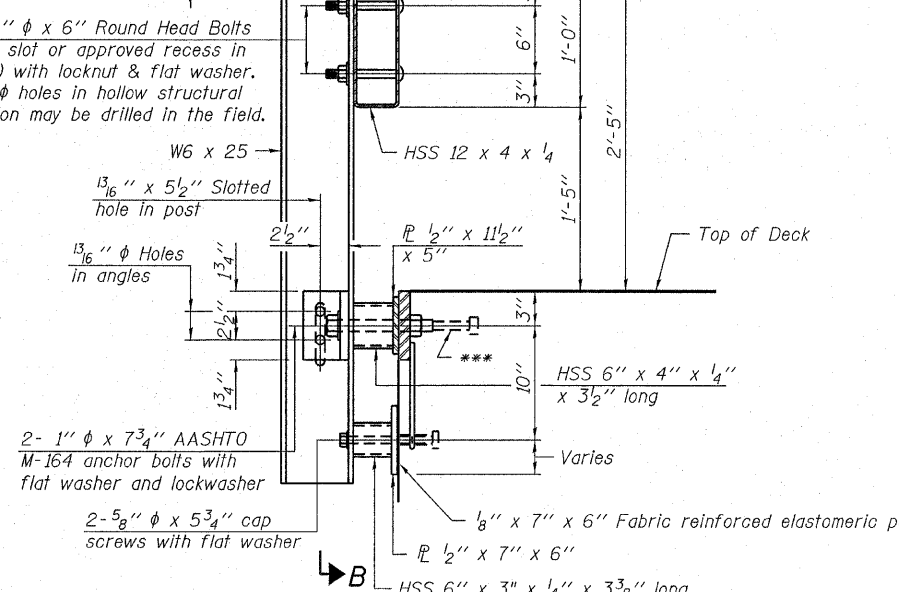


R 1/2" x 11 1/2" x 5"

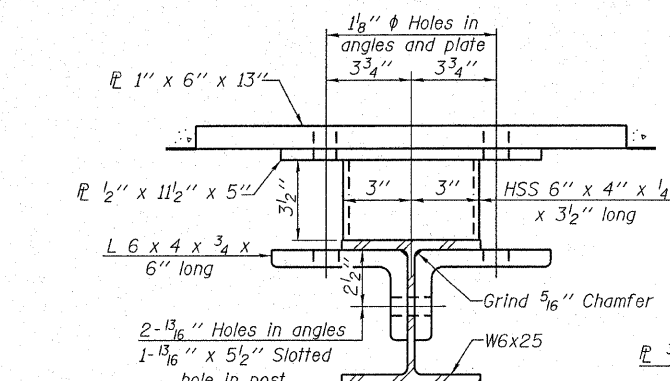
R 1/2" x 7" x 6"



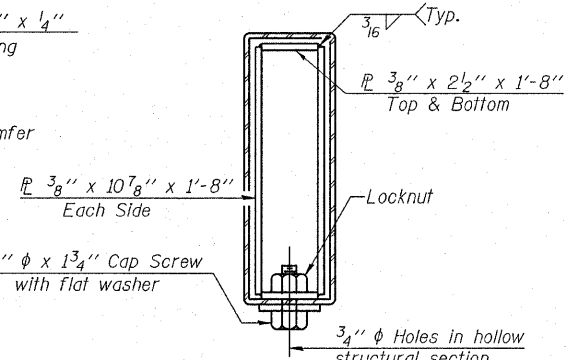
SECTION B-B



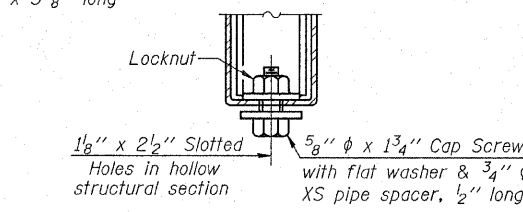
SECTION AT RAILING POST



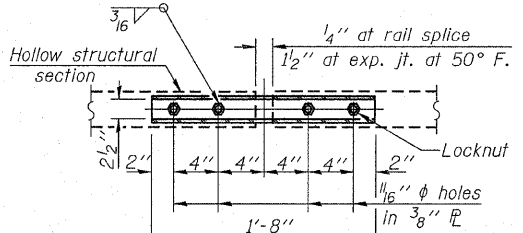
SECTION C-C



SECTIONS AT RAIL SPLICE

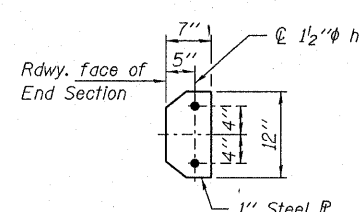


RAIL SPLICE CONNECTION AT EXPANSION JT.

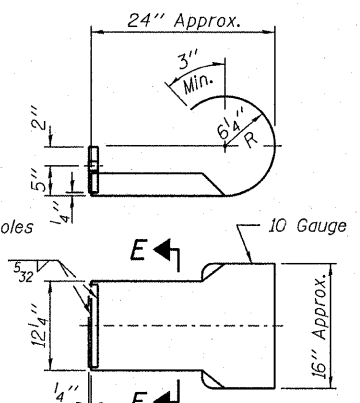


PLAN-BOTTOM SPLICE R TYPICAL

Note: Cost of curled end sections shall be included with the Steel Railing. (4 Required)

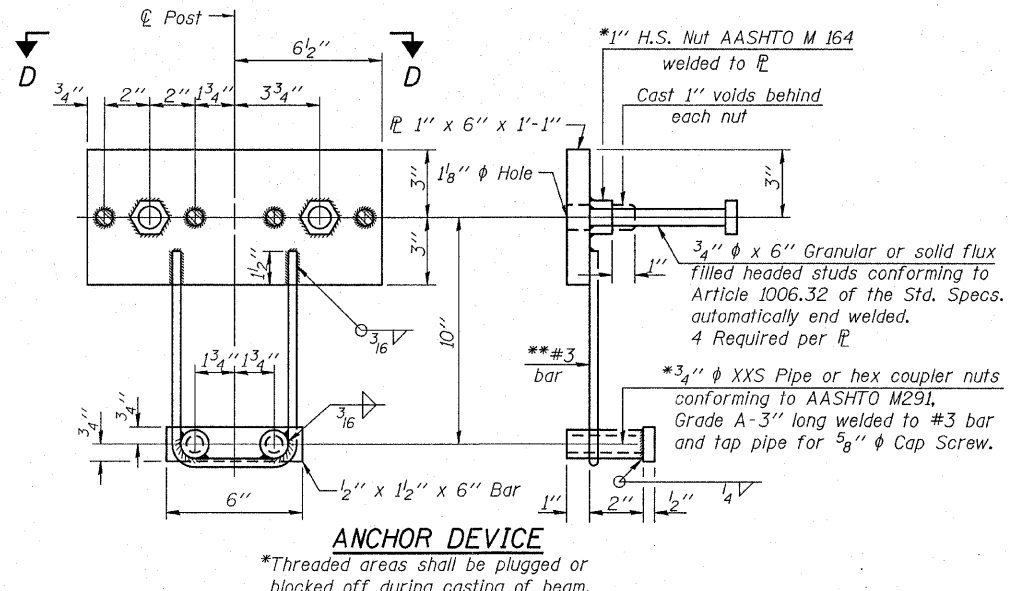


SECTION E-E

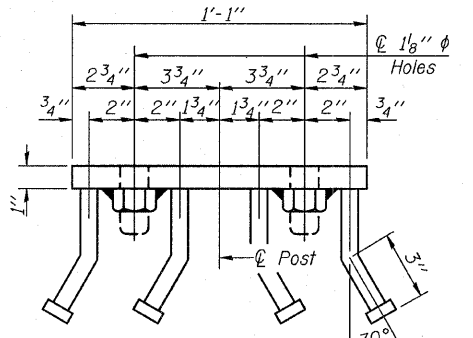


CURLED END SECTION DETAILS

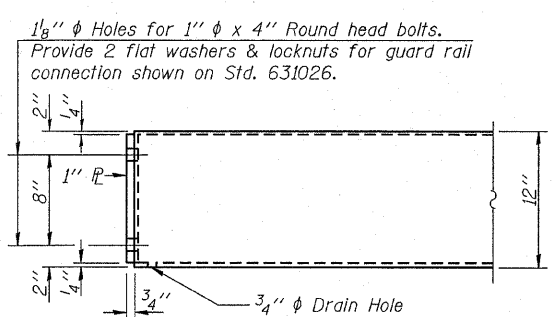
Notes:  
 All field drilled holes shall be coated with an approved zinc rich paint before erection.  
 For multi-span bridges, sufficient 1/4" x 6" x 1'-2" galvanized steel shims shall be provided to align rail between adjacent spans. Cost included with Steel Railing, Type S-1.  
 All steel rail elements shall be galvanized according to Article 509.05 of the Standard Specifications.  
 \*\*\*The studs of the anchor devices shall be placed below the top reinforcement bars and the outermost longitudinal reinforcement bar shall be placed directly above the studs of the rail post anchor device.



ANCHOR DEVICE



VIEW D-D



END OF RAIL DETAILS

DESIGNED - S.M.S.
CHECKED - S.W.M.
DRAWN - D.T.M.
CHECKED - D.T.M.

R-23A

5-16-08

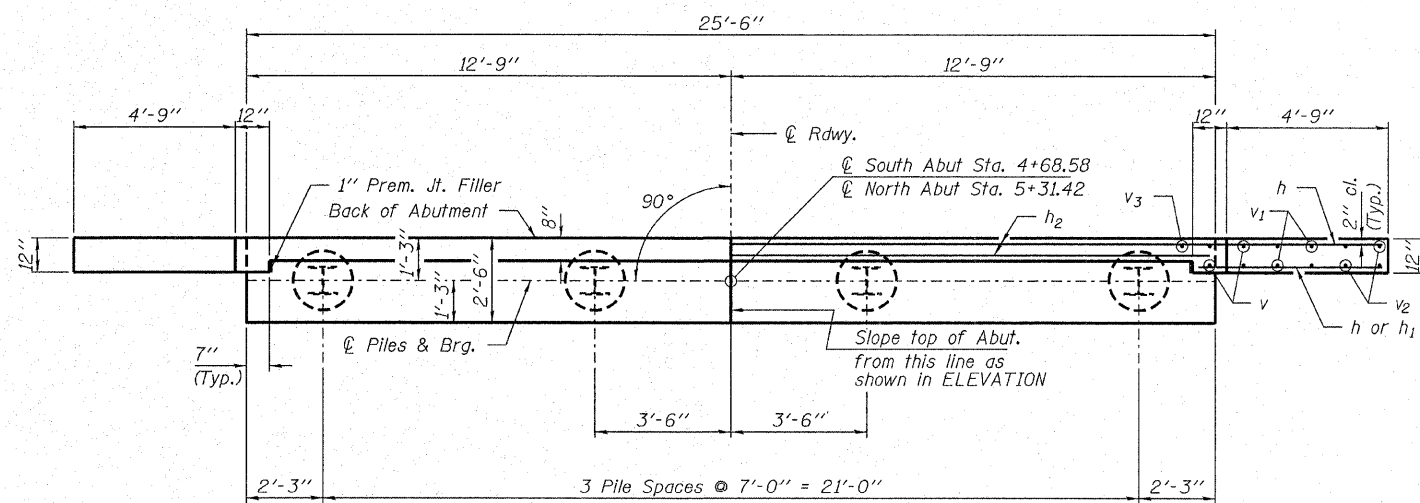
(10'-9" Maximum Post Spacing)

BILL OF MATERIAL

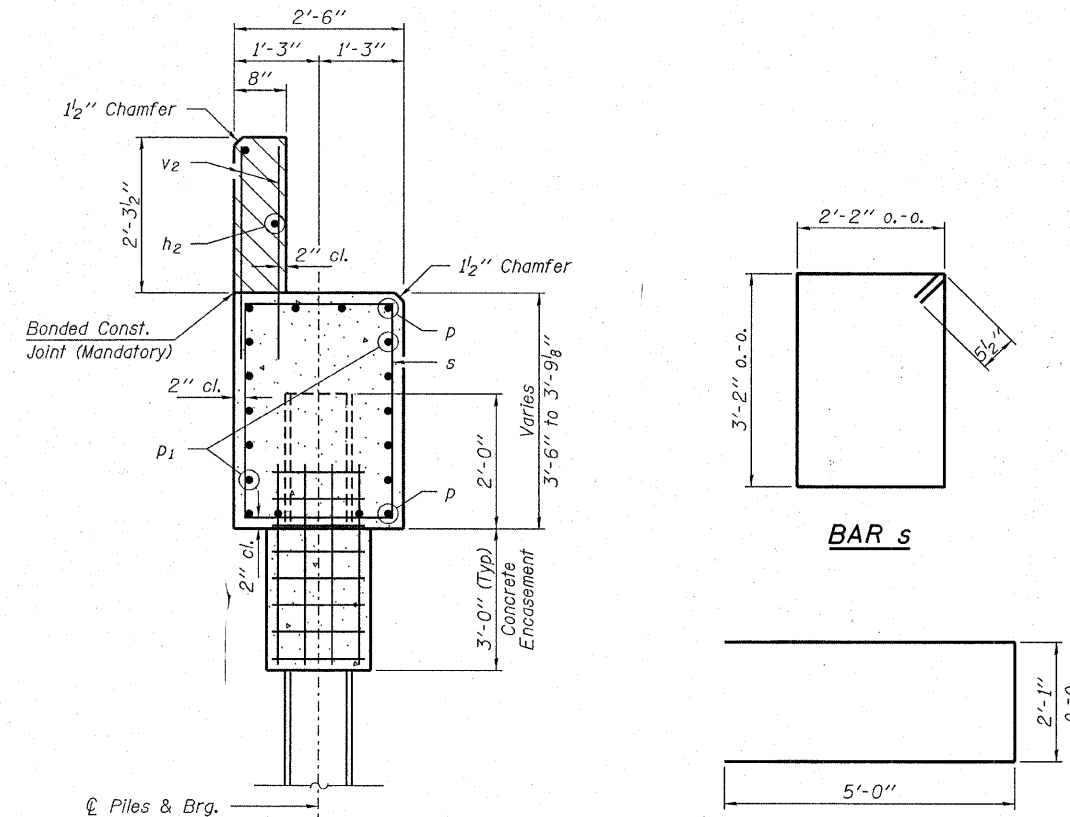
Item	Unit	Quantity
Steel Railing, Type S-1	Foot	123

STEEL RAILING, TYPE S-1  
 STRUCTURE NO. 024-3136

HAMPTON, LENZINI & RENWICK, INC. CIVIL & STRUCTURAL ENGINEERS LAND SURVEYORS <b>HLR</b> 3085 STEVENSON DRIVE, SUITE 201 SPRINGFIELD, ILLINOIS 62703 (217) 546-3400 PROJECT NUMBER: 08.0184.130 DATE: 11/05/08	SHEET NO. 5	C.H.	SECTION	COUNTY	TOTAL SHEETS	SHEET NO.
	9 SHEETS	4	06-00061-00-BR	EDWARDS	13	9
			CONTRACT NO. 95571			
			FED. ROAD DIST. NO.	ILLINOIS	FED. AID PROJECT	

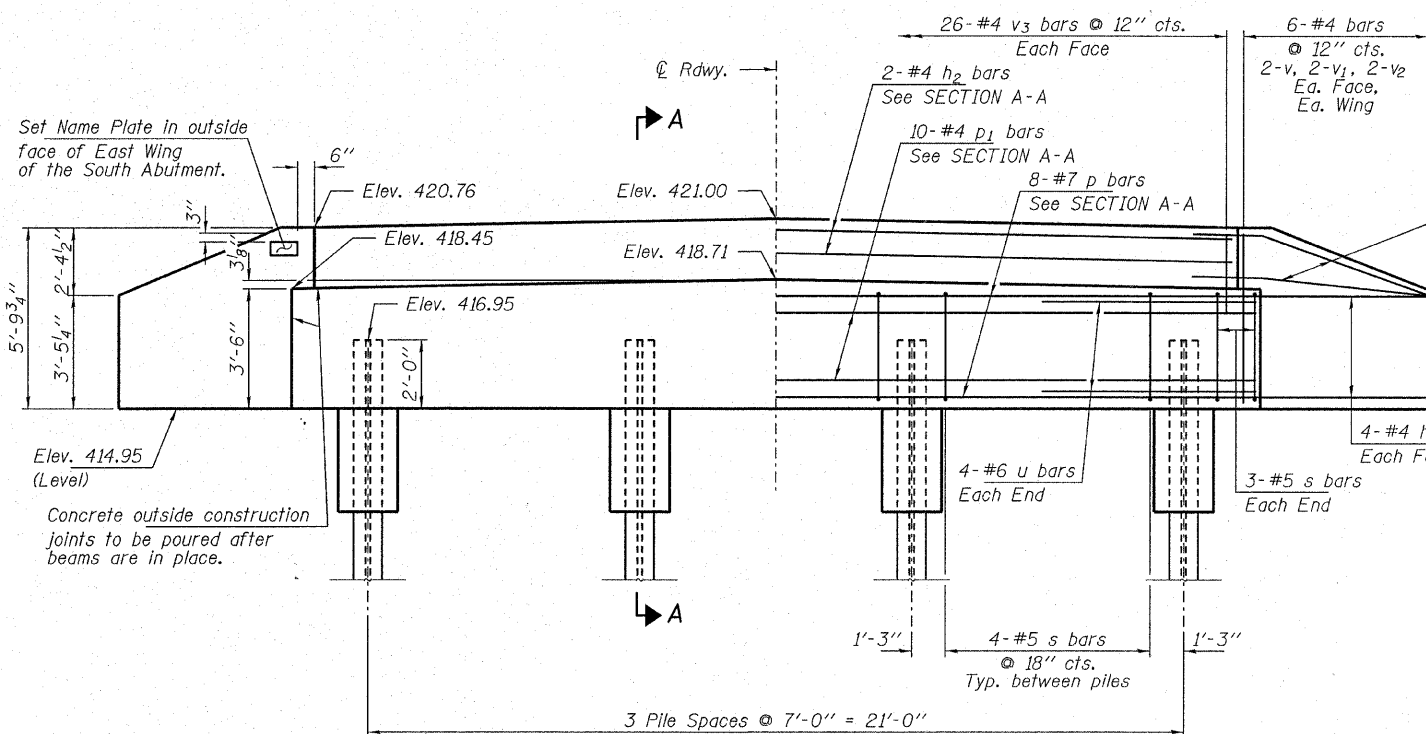


PLAN



SECTION A-A

Hatched area to be poured after beams are in place.



ELEVATION

Note: Extend h bars into abutment cap.

Fan 2-#4 h bars (B.F.)  
Fan 2-#4 h1 bars (F.F.)  
Each Wing  
Bend in field.

PILE DATA

Type: Steel HP12x53  
No. Req'd. (2 Abuts.): 8  
Factored Resistance Available: 209 Kips/Pile  
Nominal Req'd Bearing: 418 Kips/Pile  
Est. Length: 70 Ft/Pile

Notes: The Steel H-Piles shall be according to AASHTO M270 Grade 50.

BILL OF MATERIAL - 2 ABUTS.

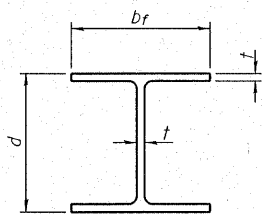
BAR	NO.	SIZE	LENGTH	SHAPE
h	40	#4	7'-0"	—
h1	8	#4	5'-6"	—
h2	4	#4	25'-2"	—
p	16	#7	25'-2"	—
p1	20	#4	25'-2"	—
s	36	#5	11'-7"	□
u	16	#6	12'-1"	—
v	16	#4	5'-1"	—
v1	16	#4	4'-1"	—
v2	16	#4	3'-1"	—
v3	104	#4	3'-2"	—
Concrete Structures			Cu. Yd.	23.6
Concrete Encasement			Cu. Yd.	2.8
Reinforcement Bars			Pound	2,520
Steel Piles HP12x53			Foot	560
Name Plates			Each	1

ABUTMENTS  
STRUCTURE NO. 024-3136

DESIGNED - S.M.S.
CHECKED - S.W.M.
DRAWN - D.T.M.
CHECKED - D.T.M.

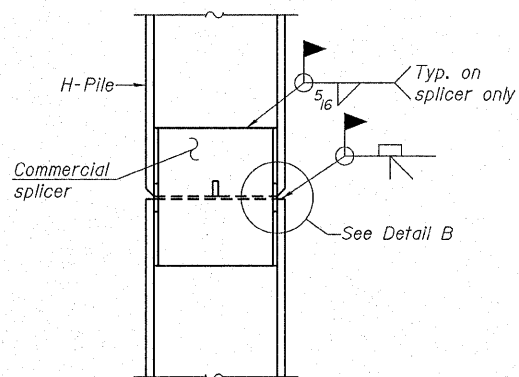
HAMPTON, LENZINI & RENWICK, INC.  
CIVIL & STRUCTURAL ENGINEERS  
LAND SURVEYORS  
**HLR**  
3085 STEVENSON DRIVE, SUITE 201  
SPRINGFIELD, ILLINOIS 62703  
(217) 546-3400  
PROJECT NUMBER: 08.0184.130 DATE: 11/05/08

SHEET NO. 6	C.H.	SECTION	COUNTY	TOTAL SHEETS	SHEET NO.
9 SHEETS	4	06-00061-00-BR	EDWARDS	13	10
			CONTRACT NO. 95571		
FED. ROAD DIST. NO.		ILLINOIS	FED. AID PROJECT		

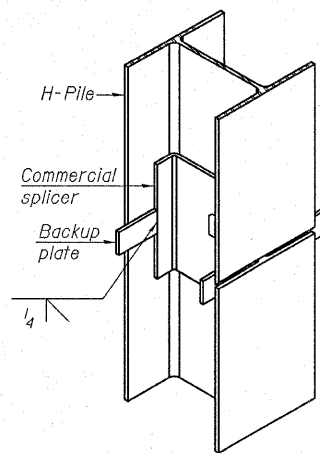


**STEEL PILE TABLE**

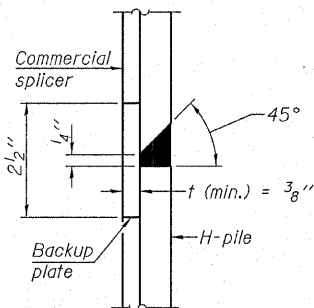
Designation	Depth d	Flange width br	Web and Flange thickness t	Encasement diameter A
HP 14x117	14 1/4"	14 7/8"	1 3/16"	30"
x102	14"	14 3/4"	1 1/16"	30"
x89	13 7/8"	14 3/4"	5/8"	30"
x73	13 5/8"	14 5/8"	1/2"	30"
HP 12x84	12 1/4"	12 1/4"	1 1/16"	24"
x74	12 1/8"	12 1/4"	5/8"	24"
x63	12"	12 1/8"	1/2"	24"
x53	11 3/4"	12"	7/16"	24"
HP 10x57	10"	10 1/4"	9/16"	24"
x42	9 3/4"	10 1/8"	7/16"	24"
HP 8x36	8"	8 1/8"	7/16"	18"



**ELEVATION**

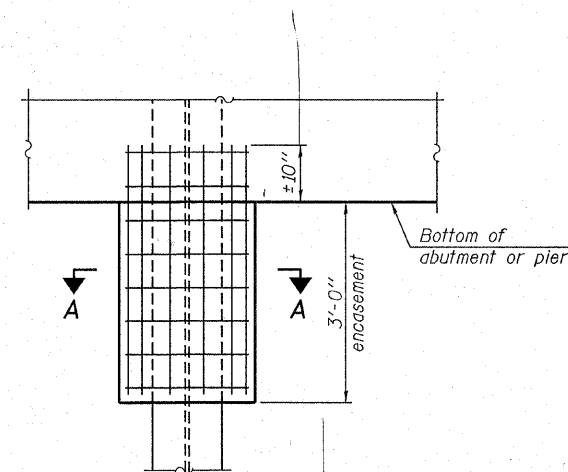


**ISOMETRIC VIEW**



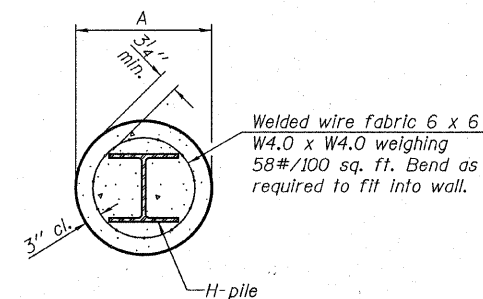
**DETAIL "B"**

**WELDED COMMERCIAL SPLICE**



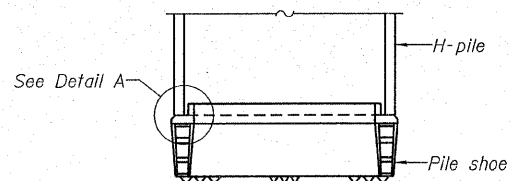
**ELEVATION**

**PILE ENCASEMENT**

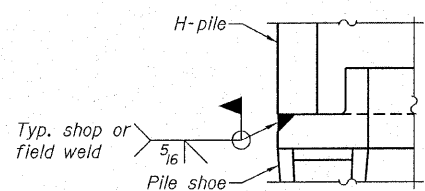


**SECTION A-A**

Note: Forms for encasement may be omitted when soil conditions permit.

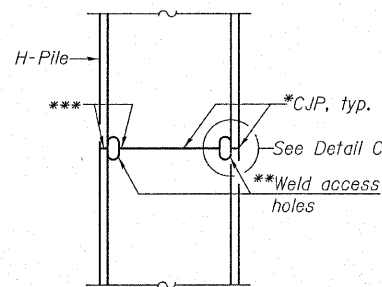


**ELEVATION**

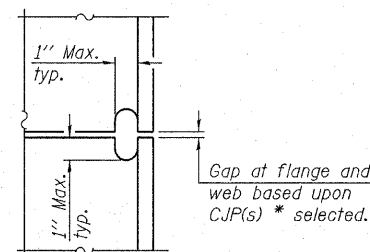


**DETAIL A**

**H-PILE SHOE ATTACHMENT**

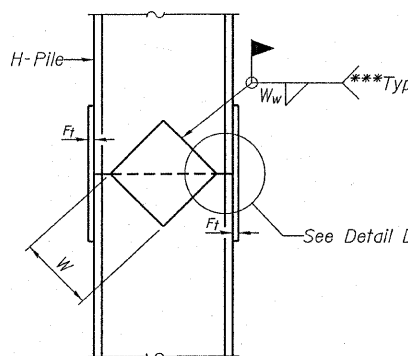


**ELEVATION**

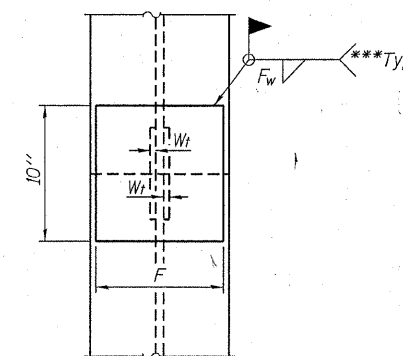


**DETAIL C**

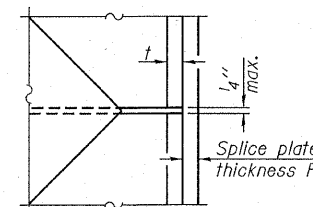
**COMPLETE PENETRATION WELD SPLICE**



**ELEVATION**



**END VIEW**



**DETAIL D**

Designation	F	Ft	Fw	W	Wt	Ww
HP 14x117	12 1/2"	1"	7/8"	7 3/4"	5/8"	1/2"
x102	12 1/2"	7/8"	3/4"	7 3/4"	5/8"	1/2"
x89	12 1/2"	3/4"	1 1/16"	7 3/4"	5/8"	1/2"
x73	12 1/2"	5/8"	9/16"	7 3/4"	5/8"	1/2"
HP 12x84	10"	7/8"	1 1/16"	6 1/2"	5/8"	1/2"
x74	10"	7/8"	1 1/16"	6 1/2"	5/8"	1/2"
x63	10"	5/8"	1/2"	6 1/2"	1/2"	3/8"
x53	10"	5/8"	1/2"	6 1/2"	1/2"	3/8"
HP 10x57	8"	3/4"	9/16"	5 1/4"	1/2"	3/8"
x42	8"	5/8"	9/16"	5 1/4"	1/2"	3/8"
HP 8x36	7"	5/8"	7/16"	4 1/4"	1/2"	3/8"

**STEEL H PILE DETAILS  
STRUCTURE NO. 024-3136**

Note: The steel H-piles shall be according to AASHTO M270 Grade 50.

\*Use joint conforming to Figure 3.4 in AWS D1.1, Structure Welding Code-Steel.

\*\*Preparation per Fig. 5.2 in AWS D1.1, Structure Welding Code-Steel.

\*\*\*Interrupt welds 1/4" from end of each pile.

DESIGNED - S.M.S.
CHECKED - S.W.M.
DRAWN - D.T.M.
CHECKED - D.T.M.

F-HP

5-16-08

**HAMPTON, LENZINI & RENWICK, INC.**  
CIVIL & STRUCTURAL ENGINEERS  
LAND SURVEYORS

**HLR** 3085 STEVENSON DRIVE, SUITE 201  
SPRINGFIELD, ILLINOIS 62703  
(217) 546-3400

PROJECT NUMBER: 08.0184.130 DATE: 11/05/08

SHEET NO. 7	C.H.	SECTION	COUNTY	TOTAL SHEETS	SHEET NO.
9 SHEETS	4	06-00061-00-BR	EDWARDS	13	11
			CONTRACT NO. 95571		
FED. ROAD DIST. NO.		ILLINOIS FED. AID PROJECT			



