

F.A.P. RTE.	SECTION	CITY	TOTAL SHEETS	SHEET NO.
323	06-00625-00-SW	DECATUR	121	1
FED. ROAD DIST. NO. _	ILLINOIS	CONTRACT NO. 95574		

SEE SHEET 2 FOR INDEX OF SHEETS AND LIST OF STANDARDS.

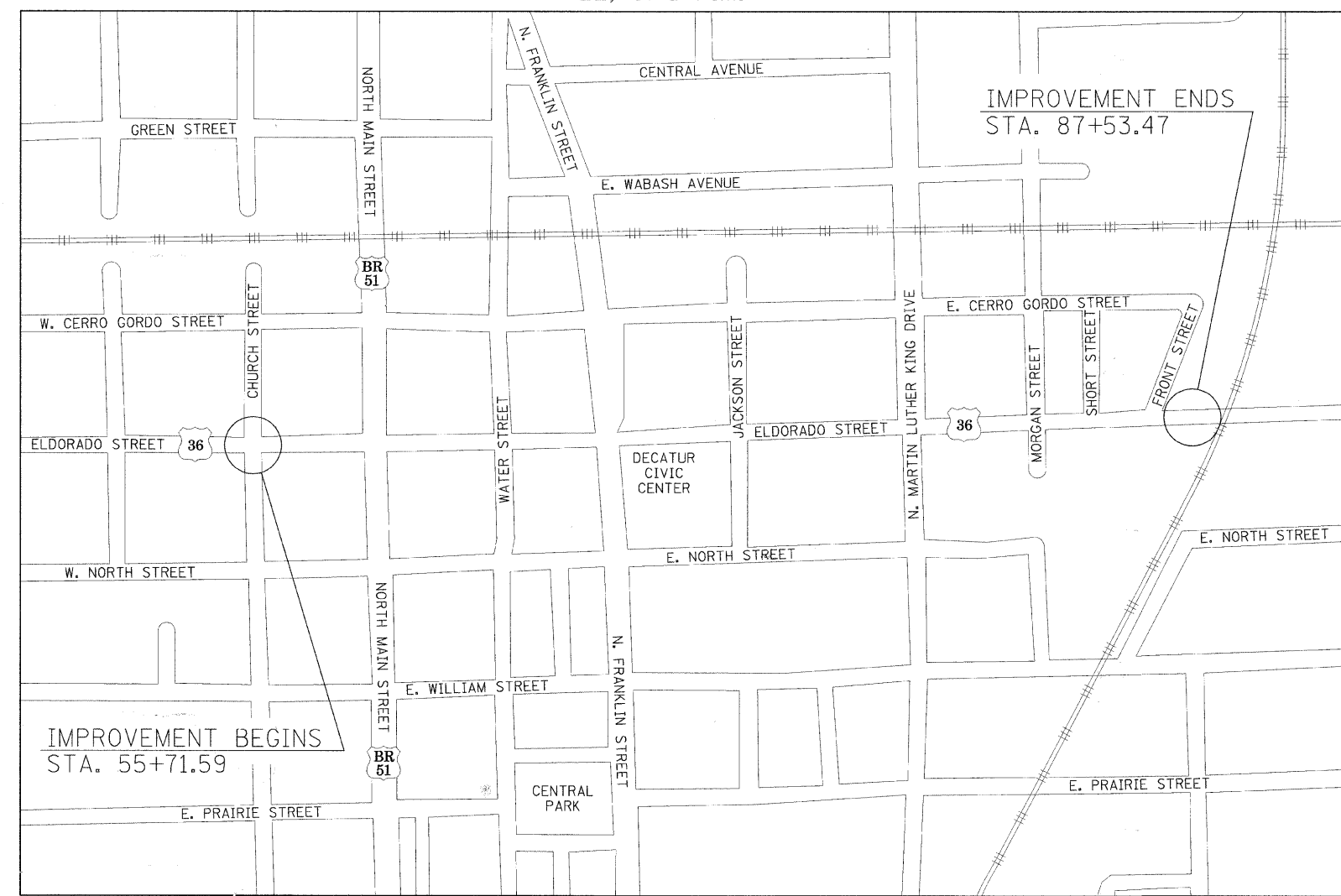
STATE OF ILLINOIS
DEPARTMENT OF TRANSPORTATION
DIVISION OF HIGHWAYS

**PROPOSED
STREETScape & HIGHWAY PLANS**

F.A.P. ROUTE 323 (ELDORADO STREET)
SECTION 06-00625-00-SW
PROJECT TE00D7(35)
CITY OF DECATUR
C-97-074-09

ROADWAY CLASSIFICATION: PRINCIPAL ARTERIAL
2008 ADT = 20000
DESIGN SPEED: 30 MPH

R2E, 3rd P.M.

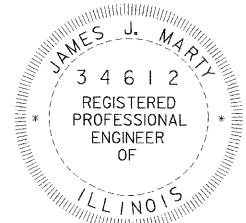


APPROVED 2-11-2009 20__
Richard G. Mokey
CITY OF DECATUR DIRECTOR OF ENGINEERING AND INFRASTRUCTURE

PASSED 3-13 20__09
Maurice East
DISTRICT SEVEN ENGINEER OF LOCAL ROADS & STREETS

Releasing For Bid Based on Limited Review
3-13 20__09
Roger Z. Dischell
DEPUTY DIRECTOR OF HIGHWAYS, REGION FOUR ENGINEER

STATE OF ILLINOIS
DEPARTMENT OF TRANSPORTATION



J.U.L.I.E.
JOINT UTILITY LOCATION INFORMATION FOR EXCAVATION
1-800-892-0123
OR 811

CONTRACT NO. 95574



345 EAST ASH AVENUE, SUITE B
DECATUR, ILLINOIS 62526
PH. 217-875-4800

LOCATION MAP

APPROXIMATE SCALE: 1" = 500'
IMPROVEMENT LENGTH = 3181.88' = 0.603 MILE

James J. Marty
Illinois Professional No. 34612
Date Feb 11, 2009
Expires Nov 30, 2009