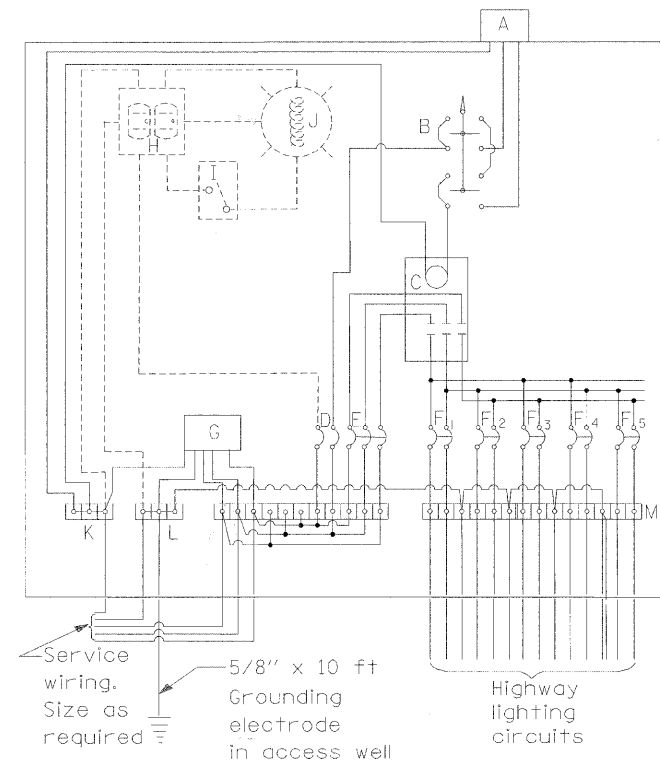
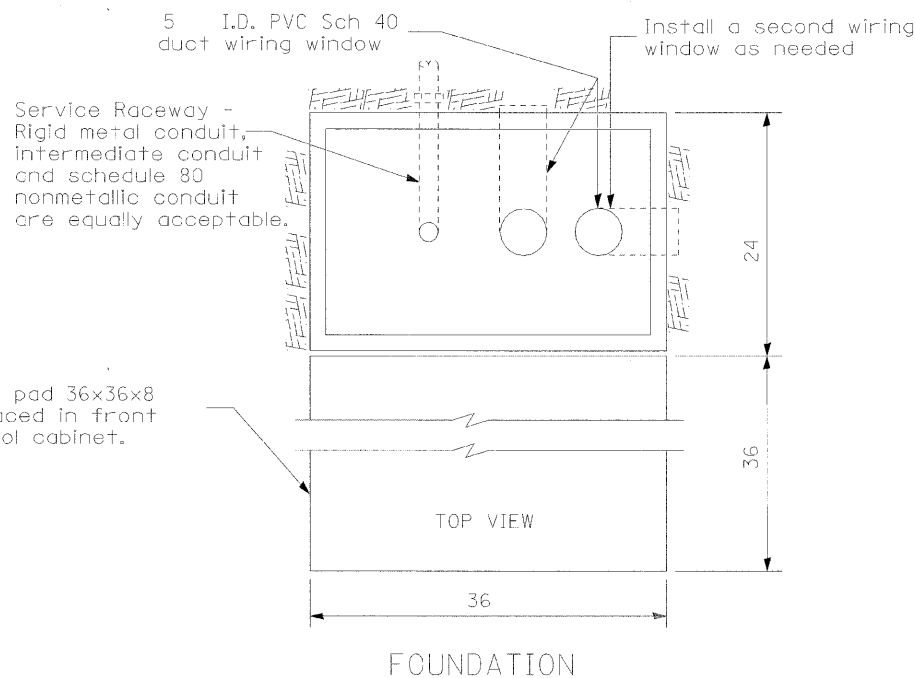
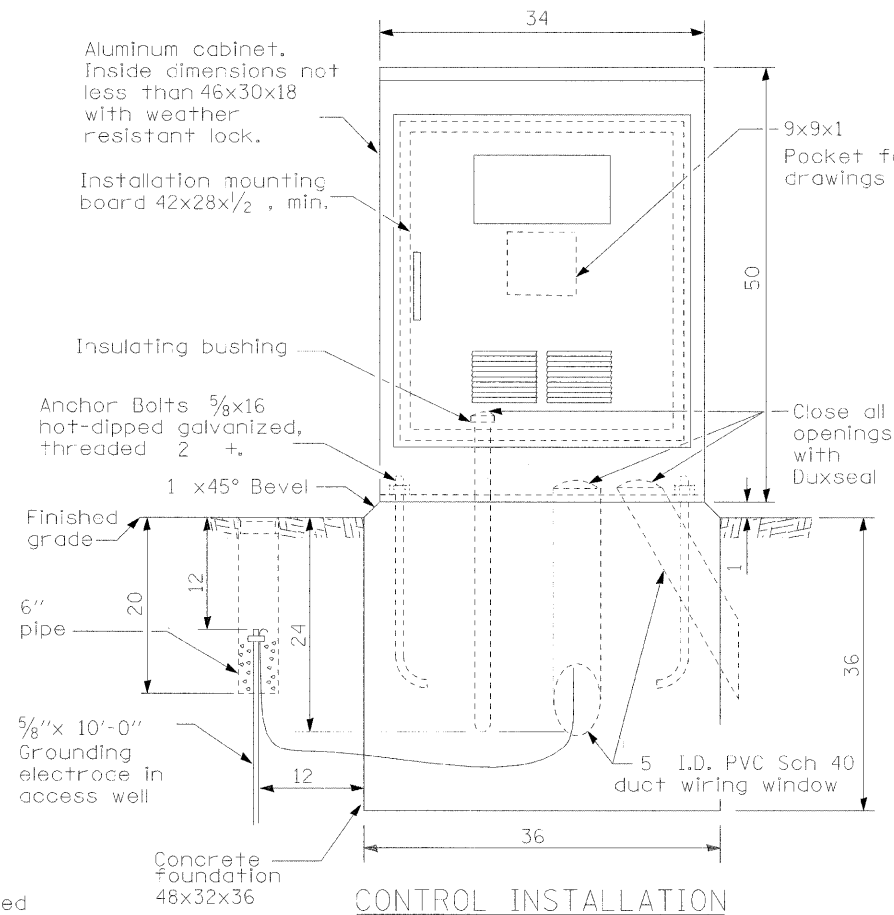


SERVICE POLE EXISTING



CONTROL SCHEMATIC

MATERIALS

- A Photocell w/ integral surge arrester remote mount in urban areas
 - B 3 position selector switch HAND-OFF-AUTO
 - C 100 amp* electrically held contactor, 120V operating coil
 - D 15 amp, 1 pole, circuit breaker
 - E 100 amp*, 3 pole, main circuit breaker
 - F 20 amp*, 2 pole, branch circuit breaker typ. 2 spare c.b. required but not shown
 - G Surge arrester
 - H GFCI duplex receptacle
 - I Single pole, single throw switch
 - J Shielded security fixture with 100W lamp
 - K Neutral bar
 - L Equipment ground bar
 - M Terminal block typ
- * = Size larger as needed

GENERAL NOTES

Locate service pole and control installation adjacent to R.O.W. line with a minimum distance of 30' from the edge of pavement. Locate in close proximity to the utility transformer so the service drop does not exceed 150ft and the total distance of overhead and underground cable utility transformer to lighting controller does not exceed 250ft. Exact location shall be established by the Engineer.

Wiring shall be panel board fashion. All bends shall be right angles. All runs shall vertical or parallel to panel board. Wires shall be grouped or laced.

All control installation components shall be U.L. listed.

Add receptacle, light, and switch in control cabinet, when specified.

Raceways shall terminate 3 above top of concrete foundation.

Label equipment ground buss and neutral buss.

120/208 V 3-PHASE 4 WIRE SERVICE

FILE NAME = #FILE#



| | | |
|--------------|--------------------|--------------------------|
| USER NAME = | DESIGNED - DAD | REVISED - March 13, 2009 |
| PLOT SCALE = | DRAWN - DAD/KJB/WM | REVISED - March 23, 2009 |
| PLOT DATE = | CHECKED - JJM | REVISED - |
| | DATE - | REVISED - |

STATE OF ILLINOIS
DEPARTMENT OF TRANSPORTATION

LIGHTING CABINET

N.T.S. SHEET NO. 1 OF 1 SHEETS STA. TO STA.

| F.A.P. RTE. | SECTION | CITY | TOTAL SHEETS | SHEET NO. |
|------------------------------|----------------|--|--------------|-----------|
| 323 | 06-00625-00-SW | DECATUR | 121 | B1 |
| ELDORADO STREETSCAPE PROJECT | | CONTRACT NO. 95574 | | |
| FED. ROAD DIST. NO. | | ILLINOIS FED. AID PROJECT: TE-00071351 | | |