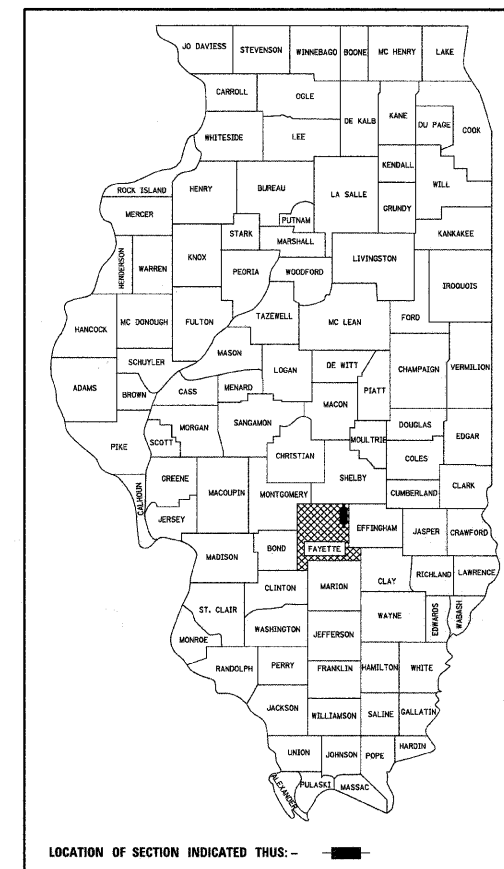


STATE OF ILLINOIS  
DEPARTMENT OF TRANSPORTATION

PLANS FOR PROPOSED  
HIGHWAY BRIDGE PROGRAM

TR 518  
BRIDGE OVER WOLF CREEK  
SECTION 08-08122-00-BR  
PROJECT NO. BROS-0051(084)  
LOUDON ROAD DISTRICT  
FAYETTE COUNTY  
JOB NO. C-97-047-09

ROUTE	SECTION	COUNTY	TOTAL SHEETS	SHEET NO.
TR 518	08-08122-00-BR	FAYETTE	11	1
FED. ROAD DIST. NO. 7 ILLINOIS				
CONTRACT NO. 95576				

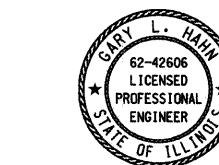


FAYETTE COUNTY  
HIGHWAY DEPARTMENT

APPROVED 2-10, 20 09  
*Michael J. Hahn*  
FAYETTE COUNTY, COUNTY ENGINEER

PASSED 2-11, 20 09  
*Maureen E. Kestel*  
DISTRICT SEVEN ENGINEER OF LOCAL ROADS & STREETS

RELEASING FOR BID  
BASED ON LIMITED  
REVIEW 2-11, 20 09  
*Roger L. Duahell*  
DEPUTY DIRECTOR OF HIGHWAYS, REGION FOUR ENGINEER



*Gary L. Hahn* 02/09/2009  
GARY L. HAHN  
CENTRALIA, ILLINOIS  
ILLINOIS LICENSED PROFESSIONAL  
ENGINEER NO. 62-42606  
EXPIRES NOV. 30, 2009

INDEX OF SHEETS

- COVER SHEET
- SUMMARY OF QUANTITIES AND TYPICAL SECTIONS
- PLAN AND PROFILE OF ROADWAY
- EROSION CONTROL PLAN
- GENERAL PLAN AND ELEVATION
- 6.-7. PRECAST PRESTRESSED CONCRETE DECK BEAM DETAILS
- STEEL RAILING, TYPE S1 DETAILS
- ABUTMENT DETAILS
- 9.-11. CROSS SECTIONS OF ROADWAY

HIGHWAY STANDARDS (SEE SPECIFICATIONS)

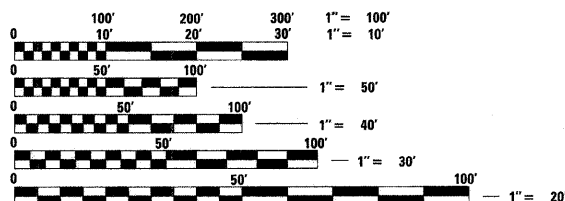
- 000001-05 STANDARD SYMBOLS, ABBREVIATIONS AND PATTERNS
- 280001-04 TEMPORARY EROSION CONTROL SYSTEMS
- 515001-03 NAME PLATE FOR BRIDGES

- 701901-01 TRAFFIC CONTROL DEVICES
- BLR 21-8 TYPICAL APPLICATION OF TRAFFIC CONTROL DEVICES FOR CONSTRUCTION ON RURAL LOCAL HIGHWAYS

SOIL BORINGS (SEE SPECIFICATIONS)

DESIGN CLASSIFICATION: RURAL LOCAL ROAD

ADT<sub>2007</sub> : 75  
ADT<sub>2027</sub> : 100  
DESIGN SPEED - 30 MPH

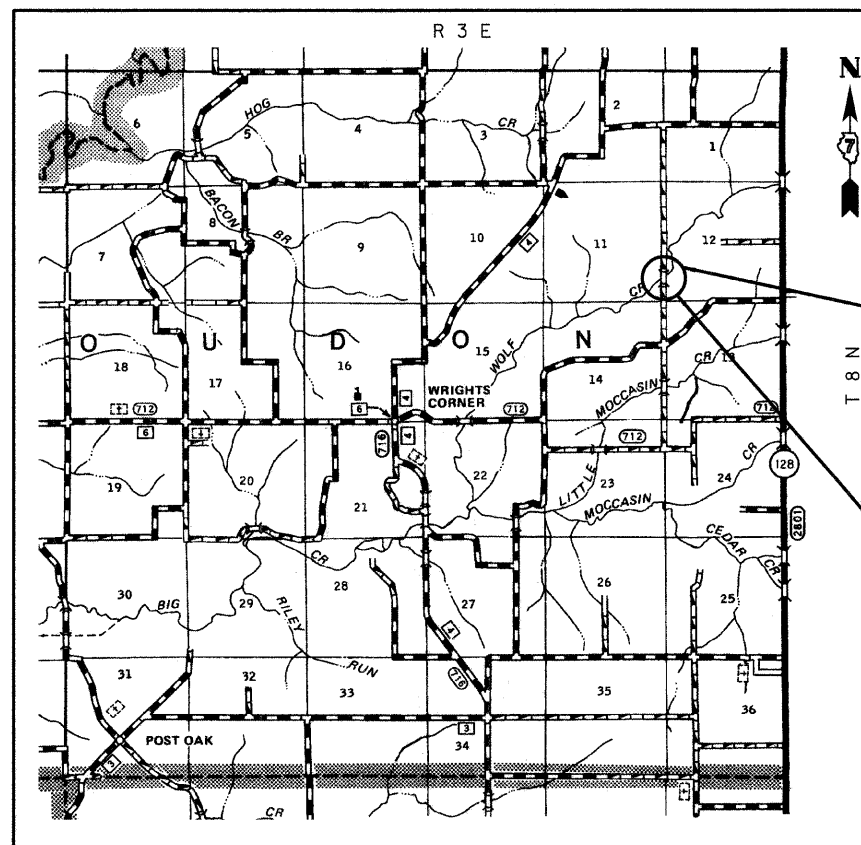


FULL SIZE PLANS HAVE BEEN PREPARED USING STANDARD ENGINEERING SCALES, REDUCED SIZED PLANS WILL NOT CONFORM TO STANDARD SCALES, IN MAKING MEASUREMENTS ON REDUCED PLANS, THE ABOVE SCALES MAY BE USED.

J.U.L.I.E.  
JOINT UTILITY LOCATING INFORMATION FOR EXCAVATORS  
1-800-892-0123 Website: <http://www.illinois1call.com>



CONTRACT NO. 95576



SECTION BEGINS  
STA. 6+69.97

SECTION 08-08122-00-BR

INCLUDES THE CONSTRUCTION OF A SINGLE SPAN PRECAST PRESTRESSED CONCRETE DECK BEAM BRIDGE CARRYING TR 518 OVER WOLF CREEK, 70'-0" BK. TO BK. ABUTMENTS x 24'-0" WIDE NO SKEW. EXISTING STRUCTURE NO. 026-3313 PROPOSED STRUCTURE NO. 026-3443

SECTION ENDS  
STA. 13+26.33

LOCATION: NEAR THE NE CORNER, SE 1/4, SE 1/4, SECTION 11, T8N, R3E, 3RD P.M.  
NET LENGTH OF PROJECT: 656.36 FT = 0.124 MI

**RHUTASEL and ASSOCIATES, INC.**  
CONSULTING ENGINEERS • LAND SURVEYORS  
CENTRALIA, ILLINOIS FREEBURG, ILLINOIS  
ILLINOIS DESIGN FIRM LICENSE NO. 184-000287

Sheet  
1  
of 11  
Job No. 50608