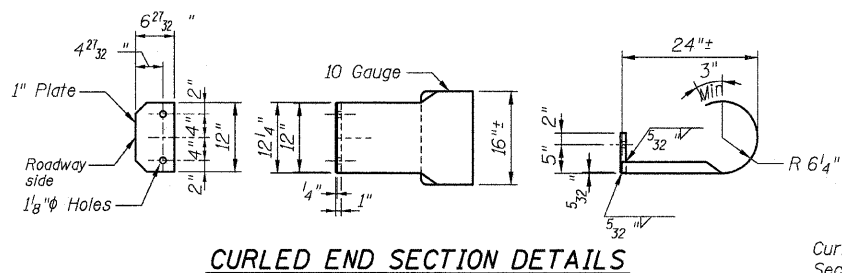
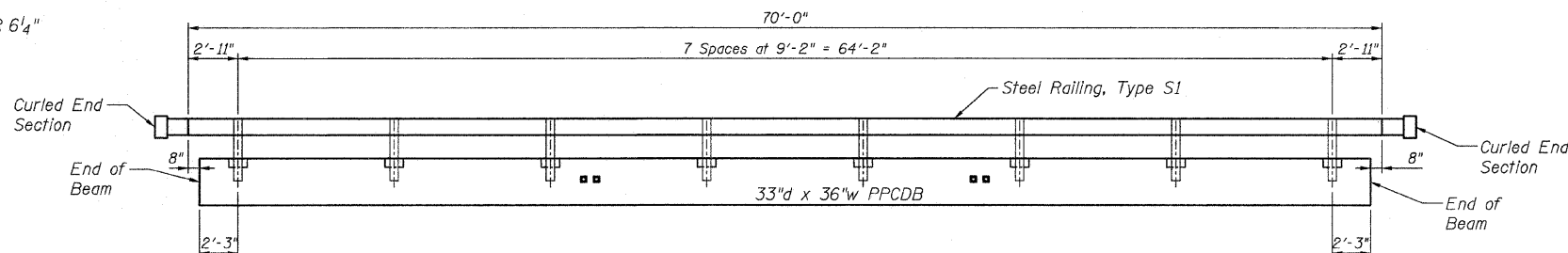


ROUTE	SECTION	COUNTY	TOTAL SHEETS	SHEET NO.
TR 518	08-08122-00-BR	FAYETTE	11	8
FED. ROAD DIST. NO. 7		ILLINOIS		
CONTRACT NO. 95576				

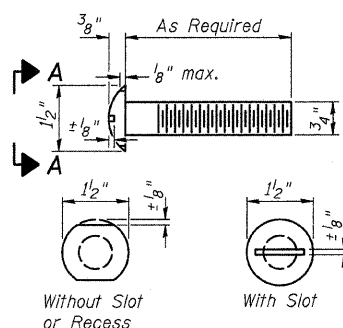


CURLLED END SECTION DETAILS

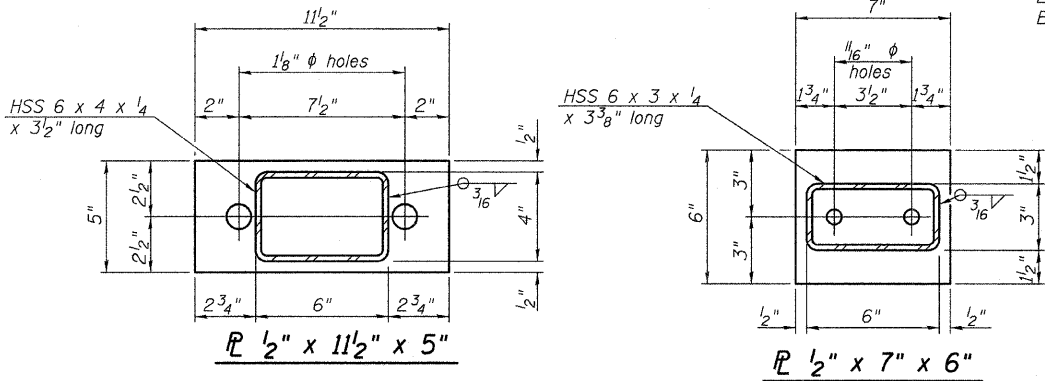


ELEVATION

Note: The cost of the Curled End Sections shall be included in the contract unit price per foot for "STEEL RAILING, TYPE S1", and no additional compensation will be allowed.



VIEW A-A ROUND HEAD BOLT

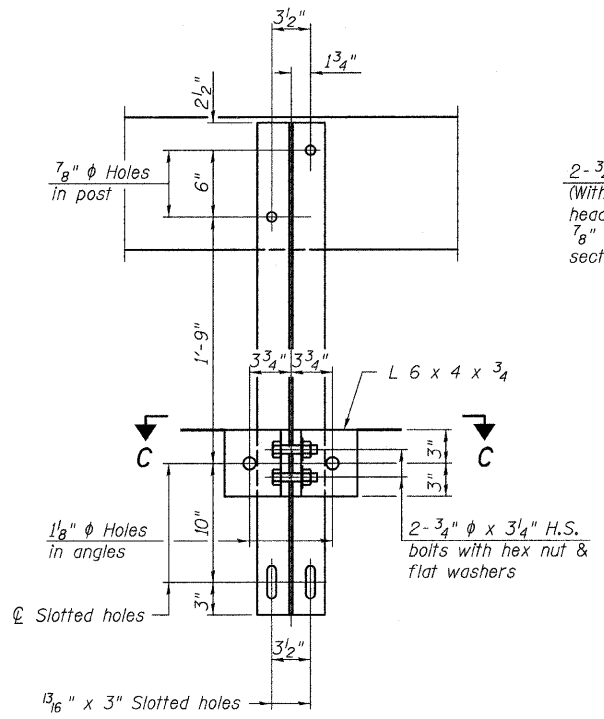


HSS 6 x 4 x 1/4 x 3 1/2" long

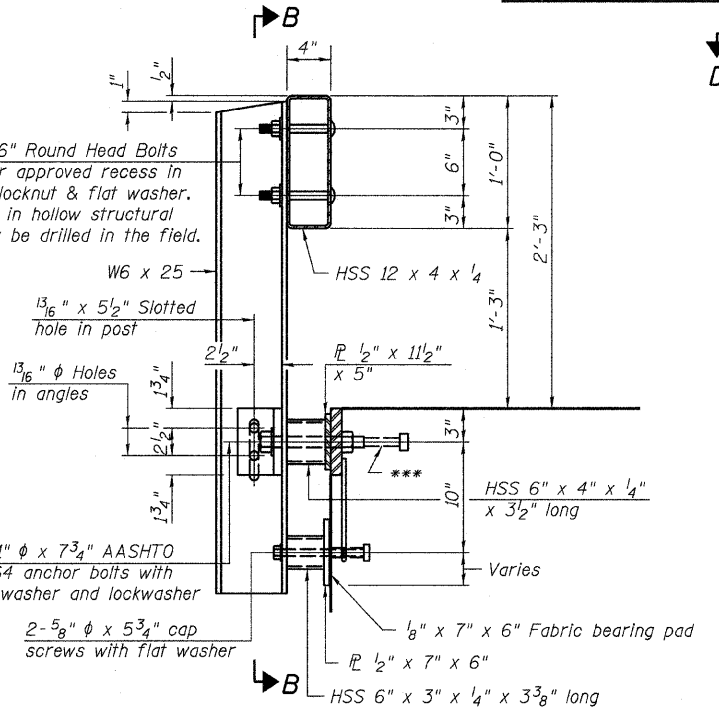
HSS 6 x 3 x 1/4 x 3 3/8" long

R 1/2" x 11 1/2" x 5"

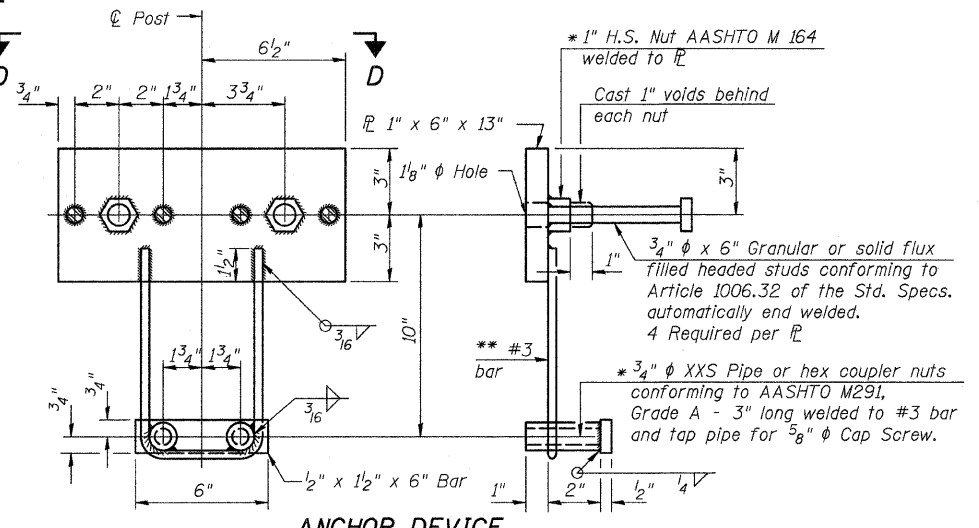
R 1/2" x 7" x 6"



SECTION B-B



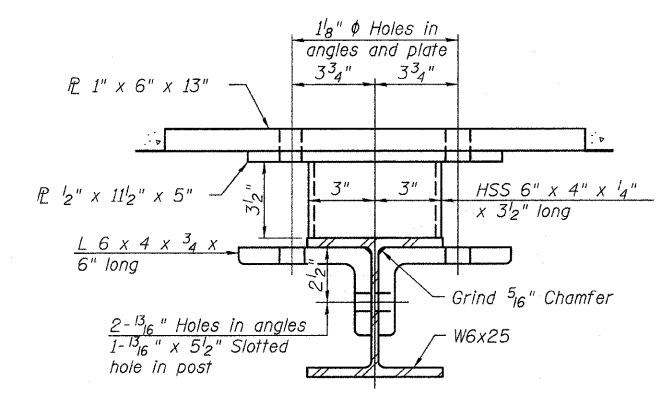
SECTION AT RAILING POST



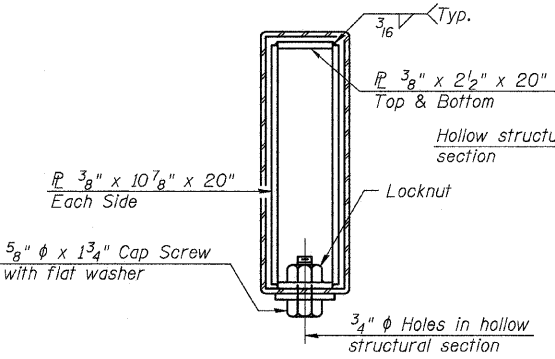
ANCHOR DEVICE

* Threaded areas shall be plugged or blocked off during casting of beam.
 ** Whenever the lower insert assemblies interfere with strand locations, the #3 bars shall be cut and adjusted in order to allow raising or lowering of the lower inserts. Maximum adjustment not to exceed 1/2".

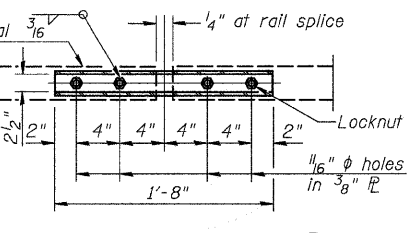
Notes:
 All field drilled holes shall be coated with an approved zinc rich paint before erection.
 For multi-span bridges, sufficient 1/4" x 6" x 1'-2" galvanized steel shims shall be provided to align rail between adjacent spans. Cost included with Steel Railing, Type S1.
 All steel rail elements shall be galvanized according to Article 509.05 of the Standard Specifications.
 *** The studs of the anchor devices shall be placed below the top reinforcement bars and the outermost longitudinal reinforcement bar shall be placed directly above the studs of the rail post anchor device.



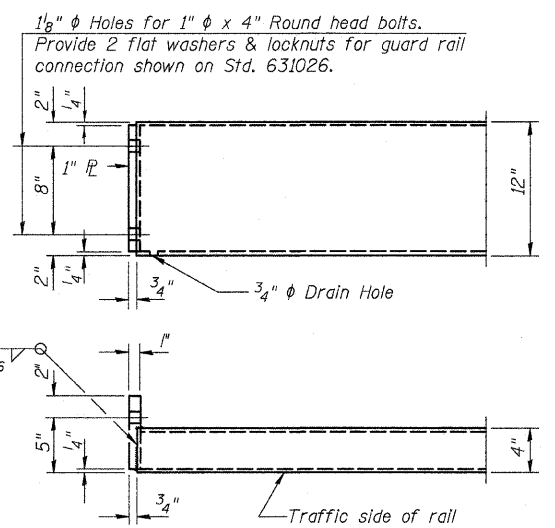
SECTION C-C



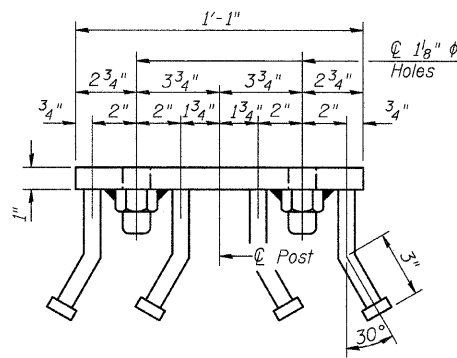
SECTIONS AT RAIL SPLICE



PLAN-BOTT. SPLICE TYPICAL



END OF RAIL DETAILS



VIEW D-D

BILL OF MATERIAL

Item	Unit	Quantity
Steel Railing, Type S1	Foot	140

STEEL RAILING, TYPE S1 DETAILS
 PROPOSED BRIDGE OVER
 WOLF CREEK
 TR 518
 SECTION 08-08122-00-BR
 FAYETTE COUNTY, ILLINOIS

02/09/2009