

FED. ROUTE	IDOT SECTION	COUNTY
9277	04-00031-00-PV	ST. CLAIR
FEDERAL AID PROJECT	ILLINOIS	
IDOT JOB NO.	C-98-309-06	
IDOT CONTRACT NO.	97327	

THOUVENOT, WADE & MOERCHEN, INC.
ENGINEERS ♦ SURVEYORS ♦ PLANNERS



- CORPORATE OFFICE**
4940 OLD COLLINSVILLE RD.
SWANSEA, ILLINOIS 62226
TEL (618) 624-4488
FAX (618) 624-6688
corp@twm-inc.com
- EDWARDSVILLE OFFICE**
1015B CENTURY DRIVE
EDWARDSVILLE, ILLINOIS 62025
TEL (618) 656-4040
FAX (618) 656-4343
edwardsville@twm-inc.com
- ST. LOUIS OFFICE**
1001 CRAIG ROAD, SUITE 260
ST. LOUIS, MISSOURI 63146
TEL (314) 236-5052
FAX (314) 872-2194
stlouis@twm-inc.com
- WATERLOO OFFICE**
113 SOUTH MAIN STREET
WATERLOO, ILLINOIS 62298
TEL (618) 939-5050
FAX (618) 939-3938
waterloo@twm-inc.com

PROFESSIONAL REGISTRATIONS	LICENSE NO.
ILLINOIS PROFESSIONAL DESIGN FIRM	184-001220
PROFESSIONAL ENGINEERING CORP.	02-035270
PROFESSIONAL STRUCTURAL ENGR. CORP.	81-005202
ILLINOIS PROF. LAND SURVEYING CORP.	046-000029
MISSOURI PROFESSIONAL ENGR. CORP.	NC 001528
MISSOURI LAND SURVEYING CORP.	NC 000346

SEAL

Signature: _____
Signature Date: _____
Expiration Date: _____

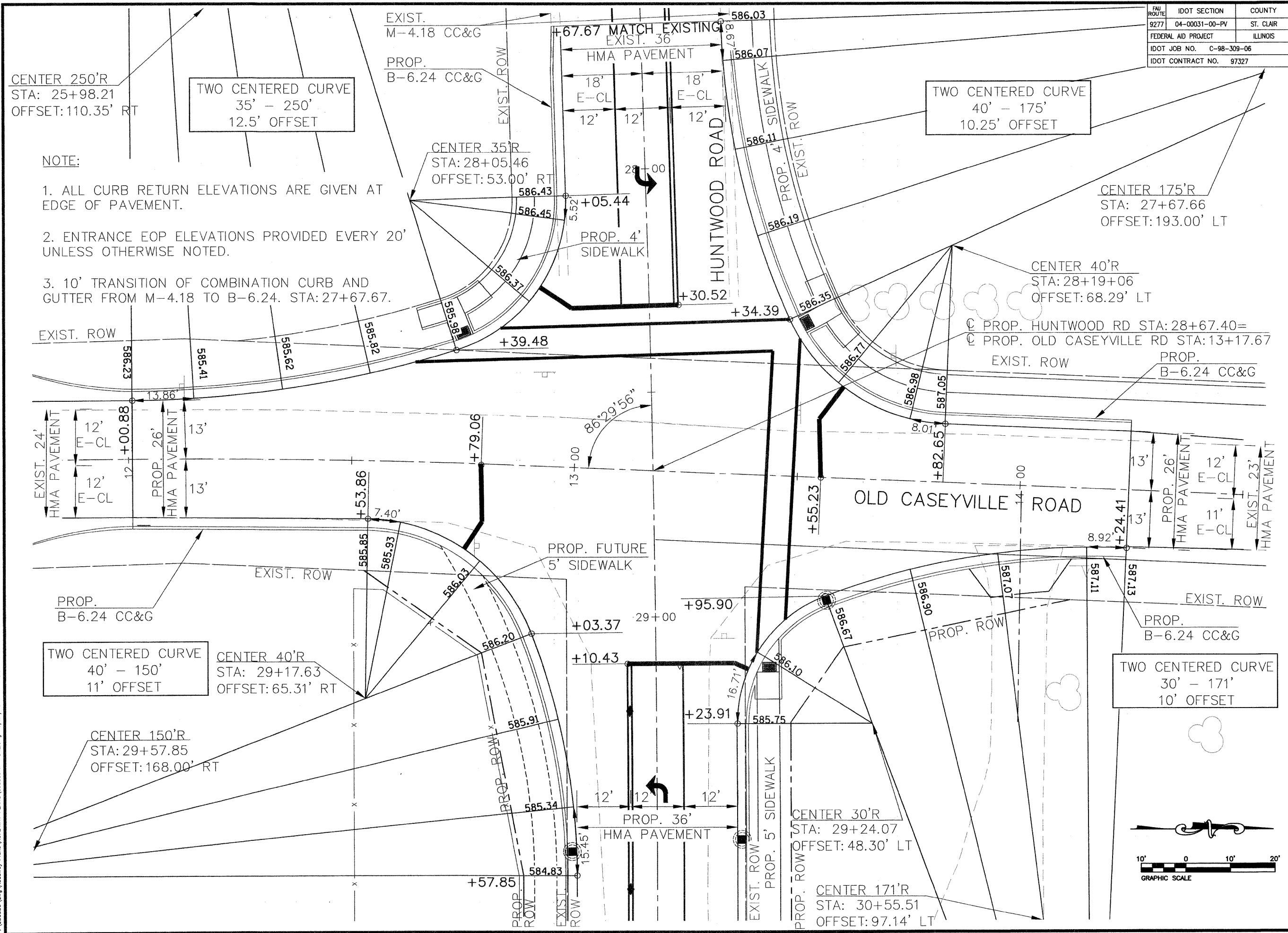
STATEMENT OF RESPONSIBILITY
I hereby confirm that the document herein to be authorized by my seal is restricted to this sheet, and I hereby disclaim any responsibility for all other drawings, specifications, estimates, reports or other documents or instruments relating to or intended to be utilized for any other part of the architectural, engineering or survey project.

CURB WARPING AND INTERSECTION DETAIL OLD CASEYVILLE ROAD

HUNTWOOD ROAD RECONSTRUCTION VILLAGE OF SWANSEA ST. CLAIR COUNTY

REV.	DATE	DESCRIPTION

DRAWN BY:	MLS	SHEET
DESIGNED BY:	MLS	44
CHECKED BY:	SJK	OF 104 SHEETS
APPROVED BY:	SJK	PROJECT DESCRIPTION
PROJECT NUMBER:	20-030356	Huntwood Road Reconstruction
<input checked="" type="checkbox"/> ISSUED FOR REVIEW	<input type="checkbox"/> ISSUED FOR BIDDING	
<input type="checkbox"/> ISSUED FOR CONSTR.	<input type="checkbox"/> RECORD DRAWING	



CENTER 250'R
STA: 25+98.21
OFFSET: 110.35' RT

TWO CENTERED CURVE
35' - 250'
12.5' OFFSET

TWO CENTERED CURVE
40' - 175'
10.25' OFFSET

- NOTE:
1. ALL CURB RETURN ELEVATIONS ARE GIVEN AT EDGE OF PAVEMENT.
 2. ENTRANCE EOP ELEVATIONS PROVIDED EVERY 20' UNLESS OTHERWISE NOTED.
 3. 10' TRANSITION OF COMBINATION CURB AND GUTTER FROM M-4.18 TO B-6.24. STA: 27+67.67.

EXIST. ROW

EXIST. 24' HMA PAVEMENT
12' E-CL
12' E-CL
12' + 00.88

PROP. B-6.24 CC&G

TWO CENTERED CURVE
40' - 150'
11' OFFSET

CENTER 40'R
STA: 29+17.63
OFFSET: 65.31' RT

CENTER 150'R
STA: 29+57.85
OFFSET: 168.00' RT

CENTER 35'R
STA: 28+05.46
OFFSET: 53.00' RT

PROP. 4' SIDEWALK

PROP. FUTURE 5' SIDEWALK

PROP. 36' HMA PAVEMENT

CENTER 30'R
STA: 29+24.07
OFFSET: 48.30' LT

CENTER 171'R
STA: 30+55.51
OFFSET: 97.14' LT

CENTER 175'R
STA: 27+67.66
OFFSET: 193.00' LT

CENTER 40'R
STA: 28+19+06
OFFSET: 68.29' LT

PROP. HUNTWOOD RD STA: 28+67.40=
PROP. OLD CASEYVILLE RD STA: 13+17.67

OLD CASEYVILLE ROAD

TWO CENTERED CURVE
30' - 171'
10' OFFSET

