

FBI ROUTE	IDOT SECTION	COUNTY
9277	04-00031-00-PV	ST. CLAIR
FEDERAL AID PROJECT	ILLINOIS	
IDOT JOB NO.	C-98-309-06	
IDOT CONTRACT NO.	97327	

**THOUVENOT, WADE & MOERCHEN, INC.**  
ENGINEERS ♦ SURVEYORS ♦ PLANNERS



**CORPORATE OFFICE**  
4940 OLD COLLINSVILLE RD.  
SWANSEA, ILLINOIS 62226  
TEL (618) 624-4488  
FAX (618) 624-6688  
corp@twm-inc.com

**EDWARDSVILLE OFFICE**  
1015B CENTURY DRIVE  
EDWARDSVILLE, ILLINOIS 62025  
TEL (618) 656-4040  
FAX (618) 656-4343  
edwardsville@twm-inc.com

**ST. LOUIS OFFICE**  
1001 CRAIG ROAD, SUITE 260  
ST. LOUIS, MISSOURI 63146  
TEL (314) 236-5052  
FAX (314) 872-2194  
stlouis@twm-inc.com

**WATERLOO OFFICE**  
113 SOUTH MAIN STREET  
WATERLOO, ILLINOIS 62298  
TEL (618) 939-5050  
FAX (618) 939-3938  
waterloo@twm-inc.com

PROFESSIONAL REGISTRATIONS	LICENSE NO.
ILLINOIS PROFESSIONAL DESIGN FIRM	184-00120
PROFESSIONAL ENGINEERING CORP.	62-035370
PROFESSIONAL STRUCTURAL ENGR. CORP.	81-005002
ILLINOIS PROF. LAND SURVEYING CORP.	048-000029
MISSOURI PROFESSIONAL ENGR. CORP.	NC 001529
MISSOURI LAND SURVEYING CORP.	NC 000346

SEAL

Signature: \_\_\_\_\_  
Signature Date: \_\_\_\_\_  
Expiration Date: \_\_\_\_\_

**STATEMENT OF RESPONSIBILITY**  
I hereby confirm that the document herein to be authenticated by my seal is restricted to this sheet, and I hereby disclaim any responsibility for all other drawings, specifications, estimates, reports or other documents or instruments relating to or intended to be utilized for any other part of the architectural, engineering or survey project.

**TITLE:**  
CURB WARPING AND INTERSECTION DETAIL TWIN LAKE DRIVE

**PROJECT:**  
HUNTWOOD ROAD RECONSTRUCTION VILLAGE OF SWANSEA ST. CLAIR COUNTY

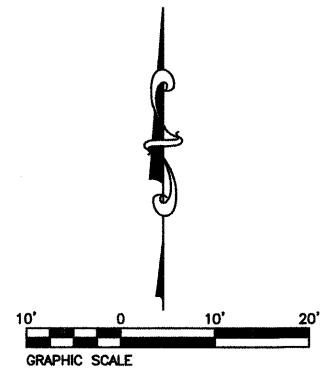
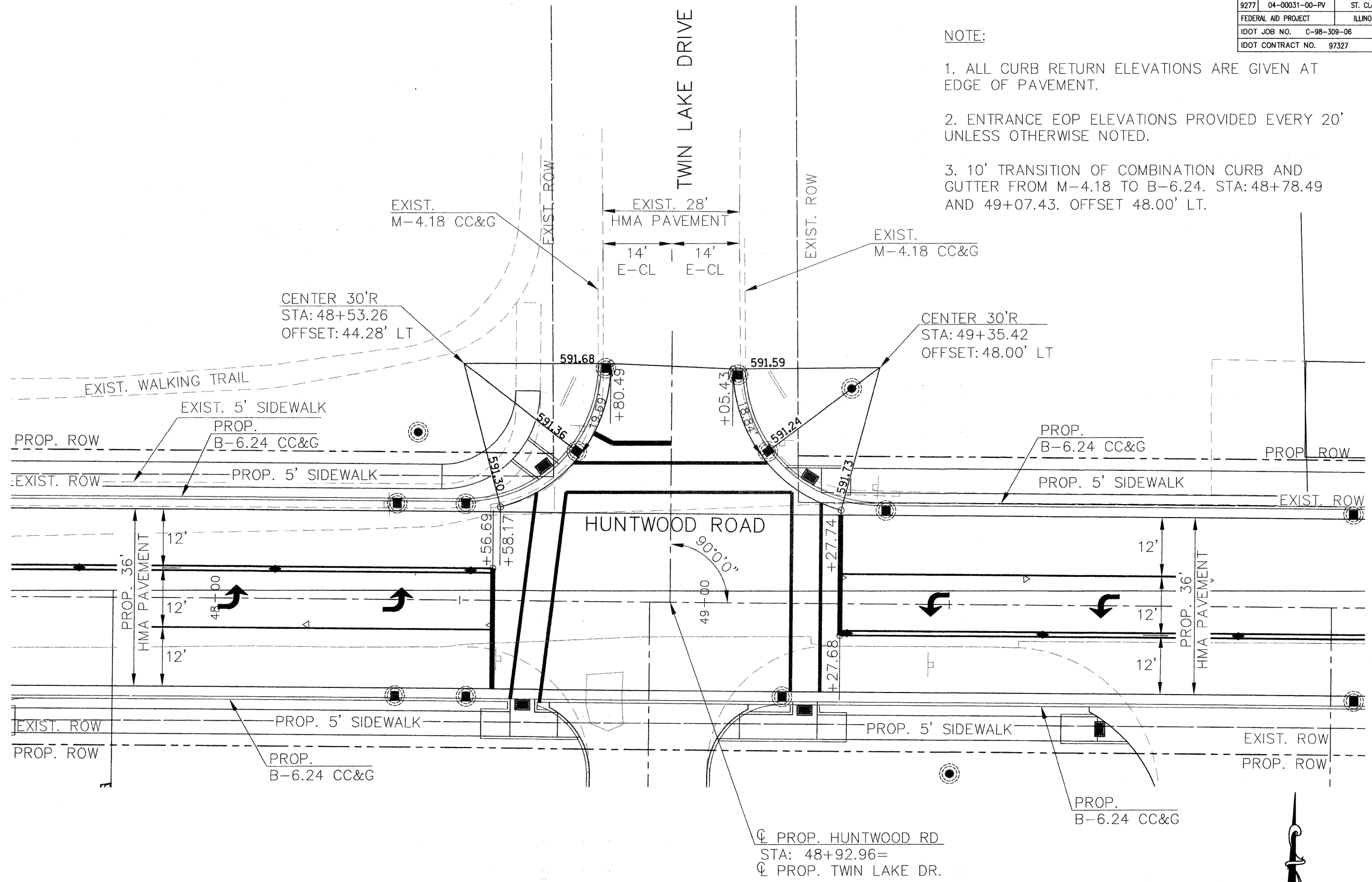
REV.	DATE	DESCRIPTION
△		
△		
△		

DRAWN BY:	MLS	SHEET <b>46</b> OF 104 SHEETS
DESIGNED BY:	MLS	
CHECKED BY:	SJK	PROJECT DESCRIPTION Huntwood Road Reconstruction
APPROVED BY:	SJK	
PROJECT NUMBER:	120-030356	

ISSUED FOR REVIEW     ISSUED FOR BIDDING  
 ISSUED FOR CONSTR.     RECORD DRAWING

**NOTE:**

1. ALL CURB RETURN ELEVATIONS ARE GIVEN AT EDGE OF PAVEMENT.
2. ENTRANCE EOP ELEVATIONS PROVIDED EVERY 20' UNLESS OTHERWISE NOTED.
3. 10' TRANSITION OF COMBINATION CURB AND GUTTER FROM M-4.18 TO B-6.24. STA: 48+78.49 AND 49+07.43. OFFSET 48.00' LT.



P:\030356\Roadway Plans\ROADWAY PLANS\030356 INT-DTL.dwg 6/26/2008 12:12:11 PM GDT