

FOR UTILITY LOCATION PURPOSES, THIS PROJECT IS LOCATED IN THE SOUTH HALF OF FRACTIONAL SECTION 19, TOWNSHIP 5 NORTH, RANGE 9 WEST OF THE THIRD PRINCIPAL MERIDIAN.

AGENCIES KNOWN TO HAVE UNDERGROUND FACILITIES WITHIN THE LIMITS OF THIS IMPROVEMENT ARE SHOWN BELOW (MEMBERS OF JULIE, PHONE (800) 892-0123, ARE INDICATED BY *).

* CHARTER COMMUNICATIONS
508 NIAGARA
EAST ALTON, IL 62024
(618) 251-2660

* CITY OF ALTON
PUBLIC WORKS DEPARTMENT
#2 EMMA L. KAUS LANE
ALTON, IL 62002
(618) 463-3530

* SBC COMMUNICATIONS
203 GOETHE
COLLINSVILLE, IL 62234
(618) 346-6400

* VILLAGE OF EAST ALTON
WATER DEPARTMENT
610 LEVEE RD.
EAST ALTON, IL 62024
(618) 258-4646

* AMEREN CIPS
700 OAKWOOD AVENUE
P.O. BOX 478
ALTON, IL 62002
(618) 463-4043 (GAS)
(618) 463-4041 (ELECTRIC)

STATE OF ILLINOIS
DEPARTMENT OF TRANSPORTATION
DIVISION OF HIGHWAYS
FEDERAL AID HIGHWAY

ACCESS ROADS FOR THE
NATIONAL GREAT RIVERS RESEARCH AND EDUCATION CENTER
PHASE I

SECTION 05-00001-00-PK
PROJECT HPP-3162(001)
LEWIS AND CLARK COMMUNITY COLLEGE
CITY OF ALTON
MADISON COUNTY
JOB C-98-322-06

SECTION	COUNTY	TOTAL SHEETS	SHEET NO.
*	MADISON	36	1
FEDERAL AID PROJECT			
* 05-00001-00-PK			
CONTRACT NO. 97365			

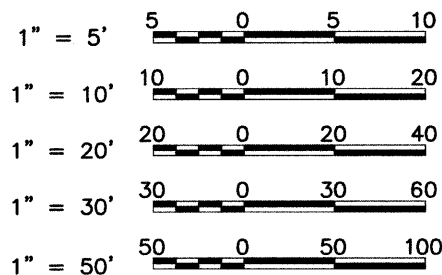
INDEX TO SHEETS

1. COVER SHEET
2. GENERAL NOTES, LEGEND & CONTROL POINTS
3. SUMMARY OF QUANTITIES AND SCHEDULES
- 4.-9. TYPICAL SECTIONS
10. OVERALL SITE PLAN
11. PLAN AND PROFILE - ROAD C AND ROAD D
12. PLAN AND PROFILE - ROAD D
13. PLAN AND PROFILE - ROAD A
14. PLAN AND PROFILE - LOCK AND DAM WAY
15. PLAN AND PROFILE - BIKE TRAIL CONNECTION
- 16.-17. DETAILS OF CONSTRUCTION
18. TRAFFIC CONTROL PLANS
19. CLEARING AND EROSION CONTROL PLAN
20. ROUND ABOUT GEOMETRICS AND JOINTS
21. SPOT ELEVATIONS
22. PAVEMENT MARKING & SIGNING PLAN
23. LANDSCAPE PLAN
- 24.-27. CROSS SECTIONS - ROAD C
- 28.-32. CROSS SECTIONS - ROAD D
- 33.-34. CROSS SECTIONS - ROAD A
- 35.-36. CROSS SECTIONS - LOCK AND DAM WAY

HIGHWAY STANDARDS

SEE SHEET NO. 2

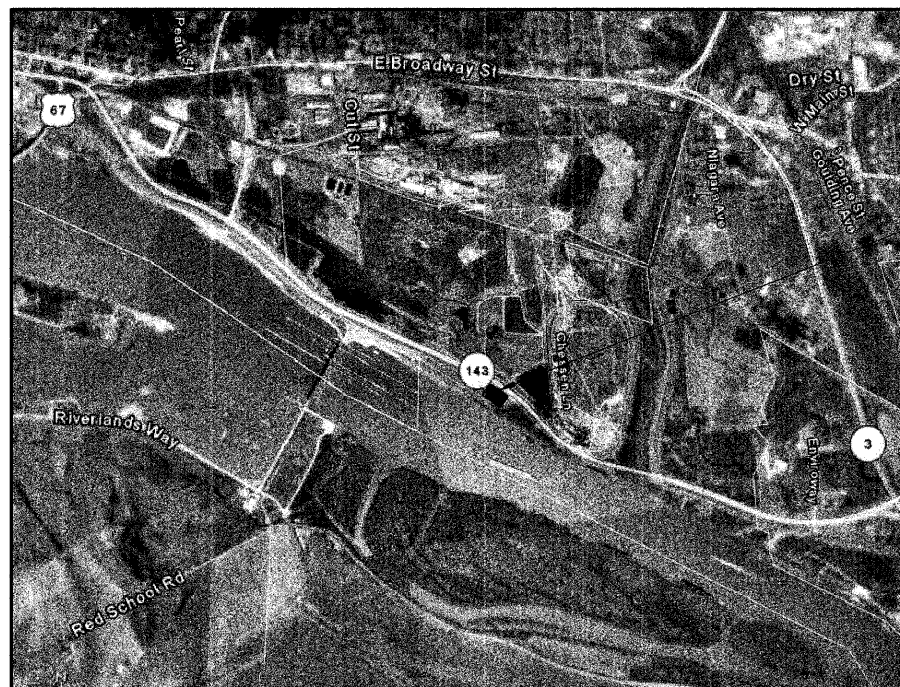
SCALES



FULL SIZE PLANS HAVE BEEN PREPARED USING STANDARD ENGINEERING SCALES. REDUCED SIZED PLANS WILL NOT CONFORM TO STANDARD SCALES. IN MAKING MEASUREMENTS ON REDUCED PLANS THE ABOVE SCALES MAY BE USED.

DESIGN DESIGNATION - 390 (2029) URBAN LOCAL STREET
DESIGN SPEED = 20 M.P.H.

CONTRACT NO. 97365

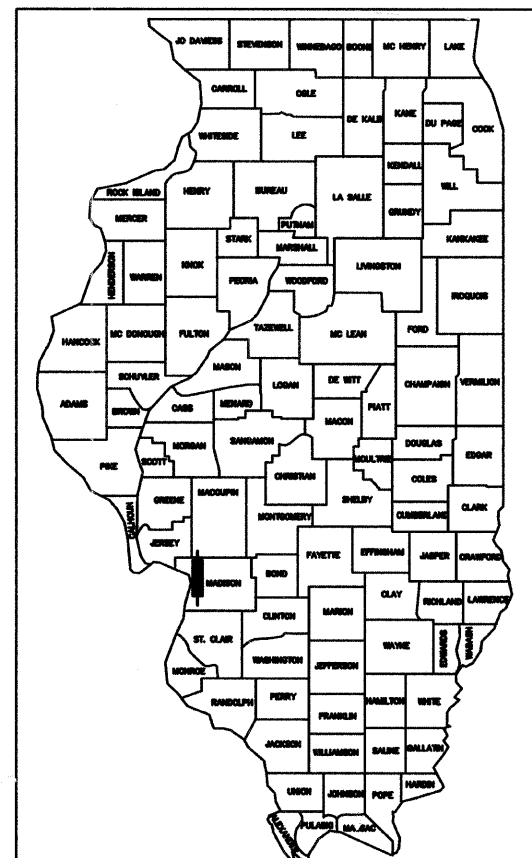
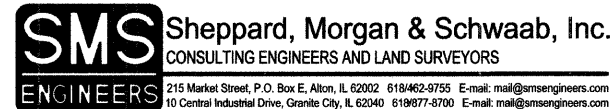


PROJECT LOCATION

LOCATION MAP

NOT TO SCALE

NET LENGTH OF ROAD "C" / ROAD "D" = 856.00' = 0.162 MILES
NET LENGTH OF ROAD "A" = 204.31' = 0.039 MILES
TOTAL NET LENGTH OF PROJECT = 1,060.31' = 0.201 MILES



LOCATION OF SECTION INDICATED THUS:-

APPROVED	<i>[Signature]</i> 2/16/09 LOCAL AGENCY REPRESENTATIVE
PASSED	<i>[Signature]</i> 2/16/09 DISTRICT 8 ENGINEER OF LOCAL ROADS & STREETS
APPROVED	<i>[Signature]</i> 2/16/09 MARY C. LAMIE, P.E. DEPUTY DIRECTOR OF HIGHWAYS REGION FIVE ENGINEER STATE OF ILLINOIS DEPARTMENT OF TRANSPORTATION



David E. Godar
DATE SIGNED 1/16/2009
EXPIRATION DATE 11/30/2009