

DRAINAGE STRUCTURES

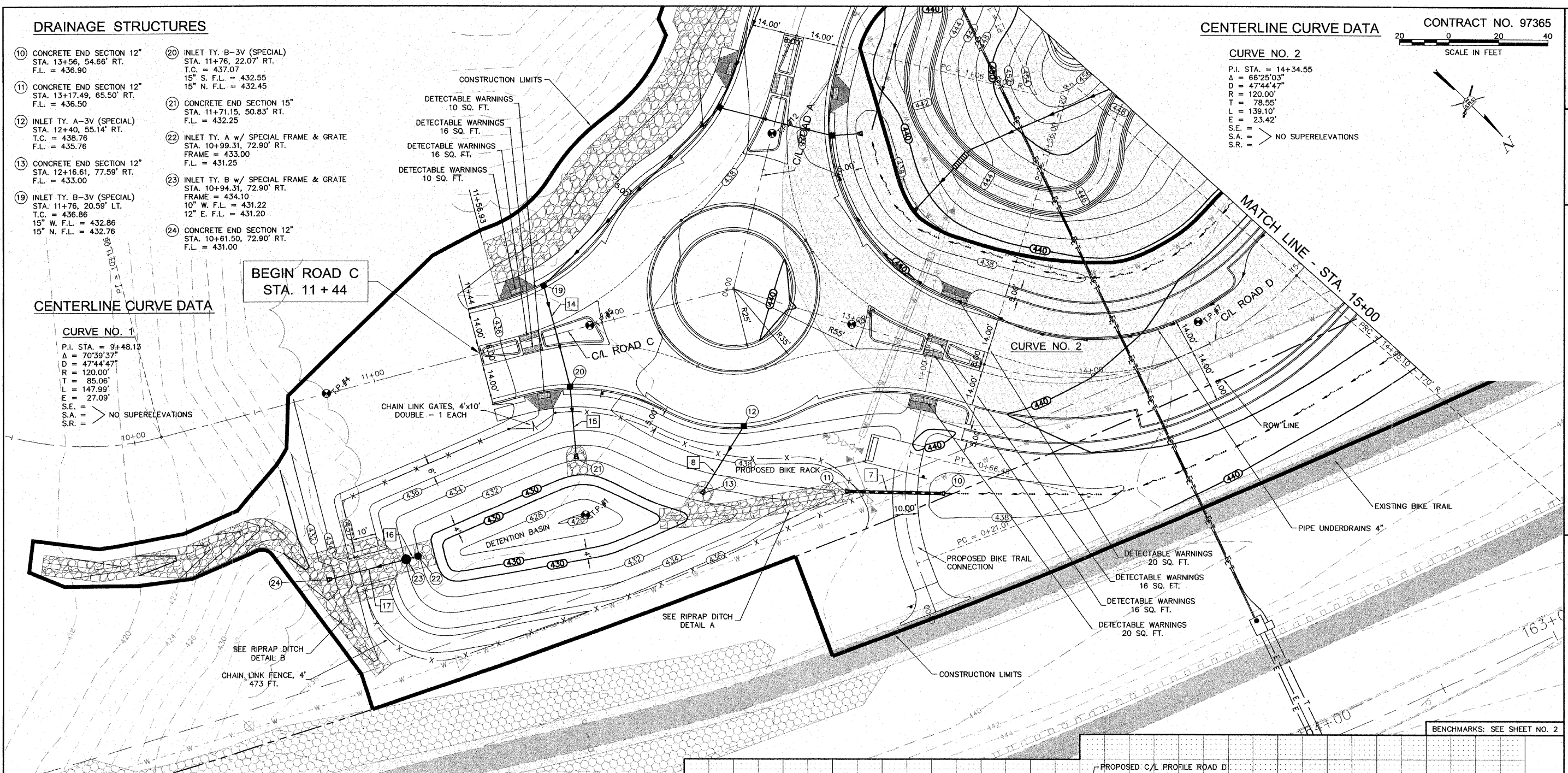
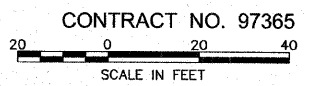
- ⑩ CONCRETE END SECTION 12" STA. 13+56, 54.66' RT. F.L. = 436.90
- ⑪ CONCRETE END SECTION 12" STA. 13+17.49, 65.50' RT. F.L. = 436.50
- ⑫ INLET TY. A-3V (SPECIAL) STA. 12+40, 55.14' RT. T.C. = 438.76 F.L. = 435.76
- ⑬ CONCRETE END SECTION 12" STA. 12+16.61, 77.59' RT. F.L. = 433.00
- ⑰ INLET TY. B-3V (SPECIAL) STA. 11+76, 20.59' LT. T.C. = 436.86 15" W. F.L. = 432.86 15" N. F.L. = 432.76
- ⑳ INLET TY. B-3V (SPECIAL) STA. 11+76, 22.07' RT. T.C. = 437.07 15" S. F.L. = 432.55 15" N. F.L. = 432.45
- ㉑ CONCRETE END SECTION 15" STA. 11+71.15, 50.83' RT. F.L. = 432.25
- ㉒ INLET TY. A w/ SPECIAL FRAME & GRATE STA. 10+99.31, 72.90' RT. FRAME = 433.00 F.L. = 431.25
- ㉓ INLET TY. B w/ SPECIAL FRAME & GRATE STA. 10+94.31, 72.90' RT. FRAME = 434.10 10" W. F.L. = 431.22 12" E. F.L. = 431.20
- ㉔ CONCRETE END SECTION 12" STA. 10+61.50, 72.90' RT. F.L. = 431.00

CENTERLINE CURVE DATA

CURVE NO. 1
 P.I. STA. = 9+48.15
 Δ = 70°39'37"
 D = 47°44'47"
 R = 120.00'
 T = 85.06'
 L = 147.99'
 E = 27.09'
 S.E. =
 S.A. = > NO SUPERELEVATIONS
 S.R. =

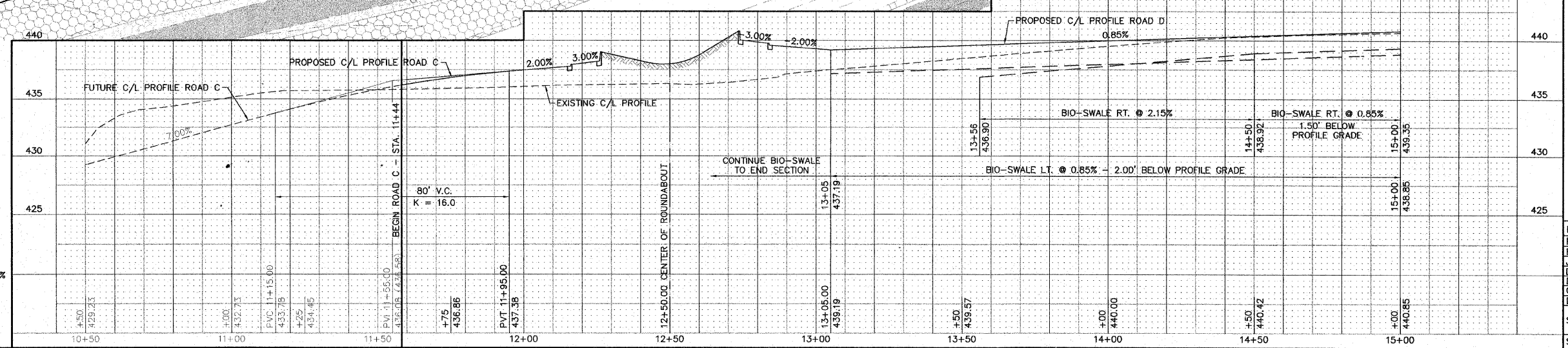
CENTERLINE CURVE DATA

CURVE NO. 2
 P.I. STA. = 14+34.55
 Δ = 66°25'03"
 D = 47°44'47"
 R = 120.00'
 T = 78.55'
 L = 139.10'
 E = 23.42'
 S.E. =
 S.A. = > NO SUPERELEVATIONS
 S.R. =



STORM SEWERS

- ⑦ ⑩ TO ⑪ 24 FT. 12" PC1 RCCP @ 1.00% (40 FT. TOTAL END SECT. TO END SECT.) TRENCH BACKFILL 2.9 CU. YDS.
- ⑧ ⑫ TO ⑬ 24 FT. 12" SSI, RCC, STORM DRAIN, AND SEWER PIPE, CL. IV @ 8.63% (32 FT. TOTAL TO END SECT.) TRENCH BACKFILL 1.3 CU. YDS.
- ⑭ ⑰ TO ⑳ 43 FT. 15" SSI, RCC, STORM DRAIN, AND SEWER PIPE, CL. IV @ 0.49% TRENCH BACKFILL 10.2 CU. YDS.
- ⑮ ㉑ TO ㉒ 23 FT. 15" SSI, RCC, STORM DRAIN, AND SEWER PIPE, CL. IV @ 0.87% (15 FT. TOTAL TO END SECT.) TRENCH BACKFILL 2.8 CU. YDS.
- ⑯ ㉓ TO ㉔ 5 FT. 10" SSB1 (PVC SDR 35) @ 0.60% CLSM 0.9 CU. YDS.
- ⑰ ㉔ TO ㉕ 25 FT. 12" SSI, RCC, STORM DRAIN, AND SEWER PIPE, CL. IV @ 0.61% (33 FT. TOTAL TO END SECT.) CLSM 1.3 CU. YDS.



REVISIONS

SMS ENGINEERS
 Sheppard, Morgan & Schwaab, Inc.
 CONSULTING ENGINEERS AND LAND SURVEYORS
 215 Market Street, P.O. Box E, Alton, IL 62002, 618452-9755 E-mail: ms@smsengineers.com
 10 Central Industrial Drive, Granite City, IL 62040, 618877-4700 E-mail: ms@smsengineers.com
 DESIGN FIRM # 184-000592

LEWIS & CLARK COMMUNITY COLLEGE
 SECTION 05 - 00001 - 00 - PK
 ACCESS ROADS FOR THE
 NATIONAL GREAT RIVERS RESEARCH AND EDUCATION CENTER
 PLAN AND PROFILE - ROAD C AND ROAD D

DWG. NO. PHASE I RDWY P-P.DWG.
 REF. BK. - PG. -
 JOB NO. 457111.1
 DSN. BY: DEG
 DWN. BY: CAD
 CHK. BY: DEG
 DATE: SEPT. 8, 2008
 SCALE: 1" = 20' H.
 1" = 5' V.
 SHEET 11 OF 36

S:\Land Projects\AAC 40525\dwg\Phase I\RDWY P-P.dwg 10/20/08 2:46:44 PM jman.120