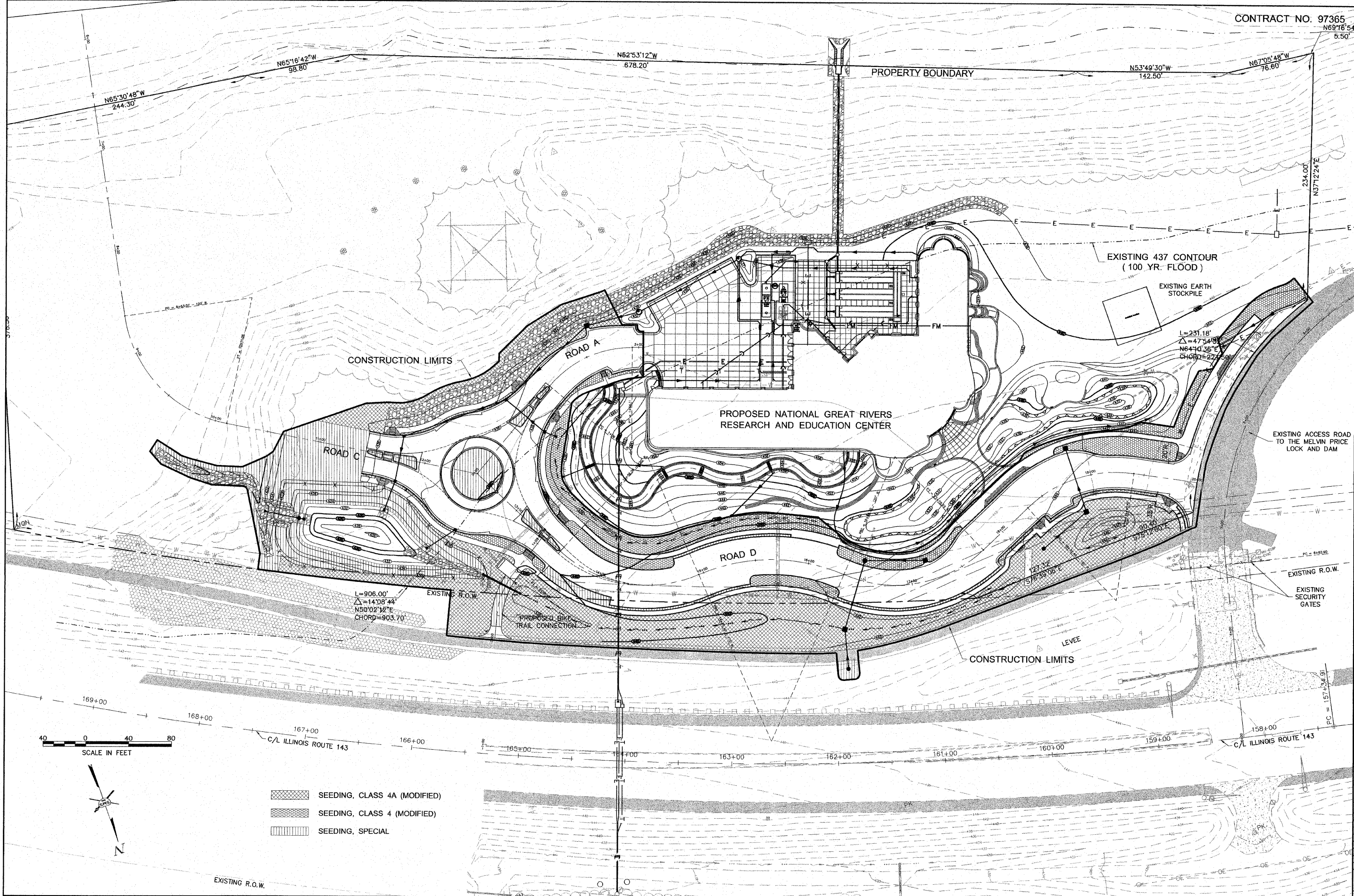


CONTRACT NO. 97365



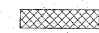


NO.	REVISIONS

SMS ENGINEERS
 SHEPPARD, MORGAN & SCHWAAB, INC.
 CONSULTING ENGINEERS AND LAND SURVEYORS
 215 Market Street, P.O. Box E, Alton, IL 62002 618462-3755 E-mail: mail@smsengineers.com
 10 Central Industrial Drive, Granite City, IL 62040 618877-9700 E-mail: mail@smsengineers.com
 DESIGN FIRM # 184-000992

LEWIS & CLARK COMMUNITY COLLEGE
 SECTION 05 - 00001 - 00 - PK
 ACCESS ROADS FOR THE
 NATIONAL GREAT RIVERS RESEARCH AND EDUCATION CENTER
 LANDSCAPE PLAN

DWG. NO.
 LP\AAIC 405829\
 PHASE I LANDSCAPE.DWG
 REF. BK. - PG. -
 JOB NO.
 DESN. BY: DEG
 DWN. BY: CAD
 CHK. BY: DEG
 DATE: SEPT. 8, 2008

SCALE: 1" = 40'
 SHEET 23 OF 36

-  SEEDING, CLASS 4A (MODIFIED)
-  SEEDING, CLASS 4 (MODIFIED)
-  SEEDING, SPECIAL

S:\Land Projects\AAC 405829\Phase I\Drawings\Phase I Landscape.dwg 2/2/2008 8:27:48 AM jman 1:40