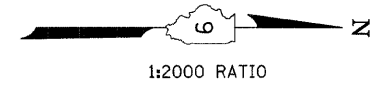
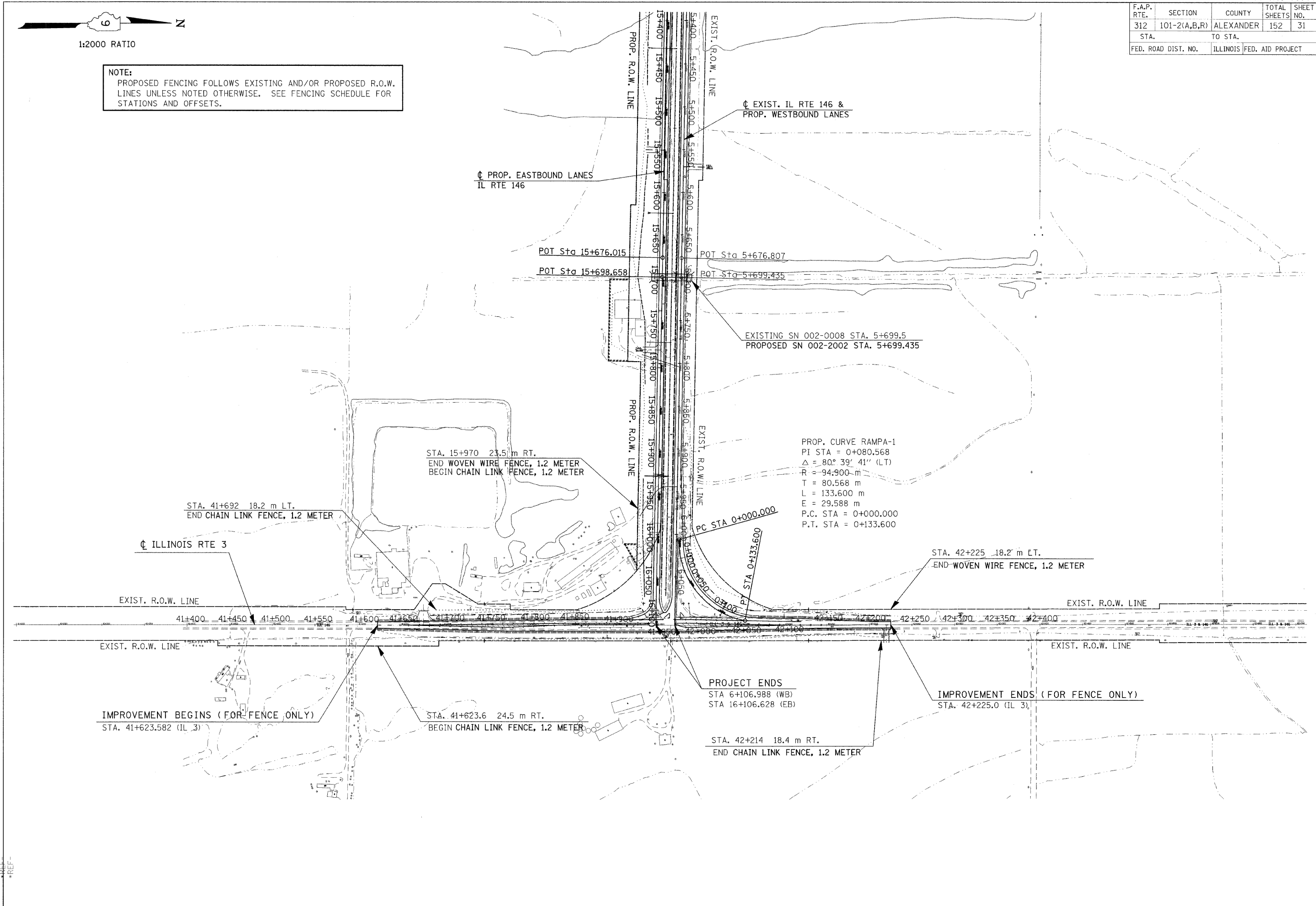


F.A.P. RTE.	SECTION	COUNTY	TOTAL SHEETS	SHEET NO.
312	101-2(A,B,R)	ALEXANDER	152	31
STA.		TO STA.		
FED. ROAD DIST. NO.		ILLINOIS	FED. AID PROJECT	



NOTE:
 PROPOSED FENCING FOLLOWS EXISTING AND/OR PROPOSED R.O.W. LINES UNLESS NOTED OTHERWISE. SEE FENCING SCHEDULE FOR STATIONS AND OFFSETS.



GENERAL AND FENCING PLAN - STA. 5+400 WB (15+400 EB) TO STA. 6+106.988 WB (16+106.628 EB) IL 146
GENERAL AND FENCING PLAN - STA. 41+400 TO STA. 42+400 IL RT 3

DATE-TIME
 DGN-SPEC
 REF-REF
 REF-REF