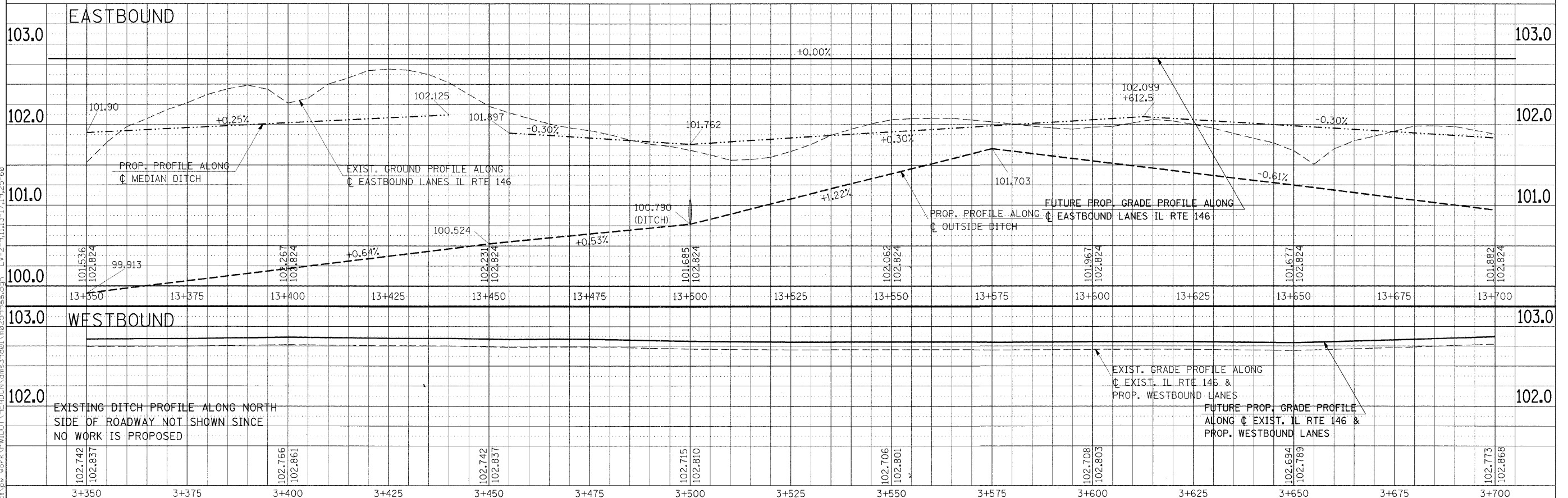
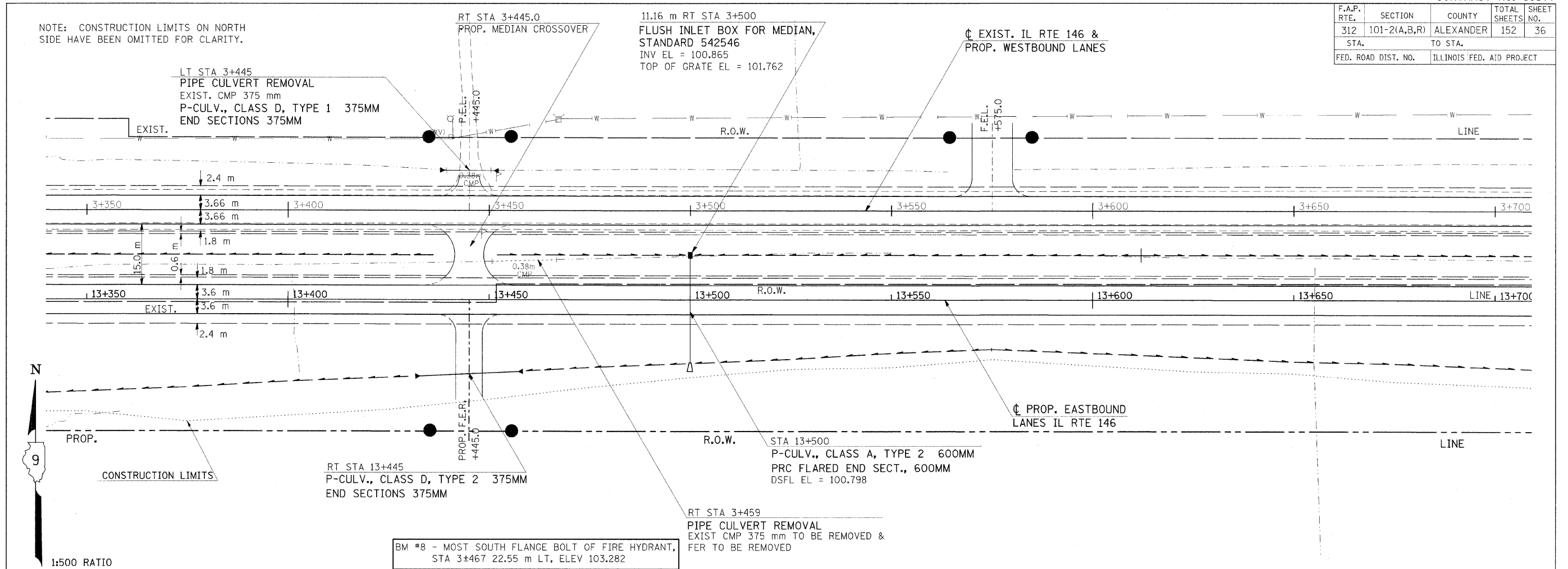


F.A.P. RTE.	SECTION	COUNTY	TOTAL SHEETS	SHEET NO.
312	101-2(A,B,R)	ALEXANDER	152	36
STA.		TO STA.		
FED. ROAD DIST. NO.		ILLINOIS FED. AID PROJECT		

NOTE: CONSTRUCTION LIMITS ON NORTH SIDE HAVE BEEN OMITTED FOR CLARITY.



FINAL SURVEY	BY	DATE
SURVEYED		
PLOTTED		
NOTE BOOK		
REVISED		
DATE		
NO.		

Friday, November 21, 2008 @ 10:23:30 AM
 c:\pwworkspace\alexander\roadcon\mms3642\m02599pl.dgn LV=2-20-24-60-62-63
 c:\pwworkspace\alexander\roadcon\mms3642\m02599pl.dgn LV=1-63
 c:\pwworkspace\alexander\roadcon\mms3642\m02599pl.dgn LV=2-9-11-13-17-19-25-60

PLAN-PROFILE - STA 3+350 TO STA 3+700