

F.A.P. RTE.	SECTION	COUNTY	TOTAL SHEETS	SHEET NO.
312	101-2(A,B,R)	ALEXANDER	152	40
STA.		TO STA.		
FED. ROAD DIST. NO.		ILLINOIS FED. AID PROJECT		

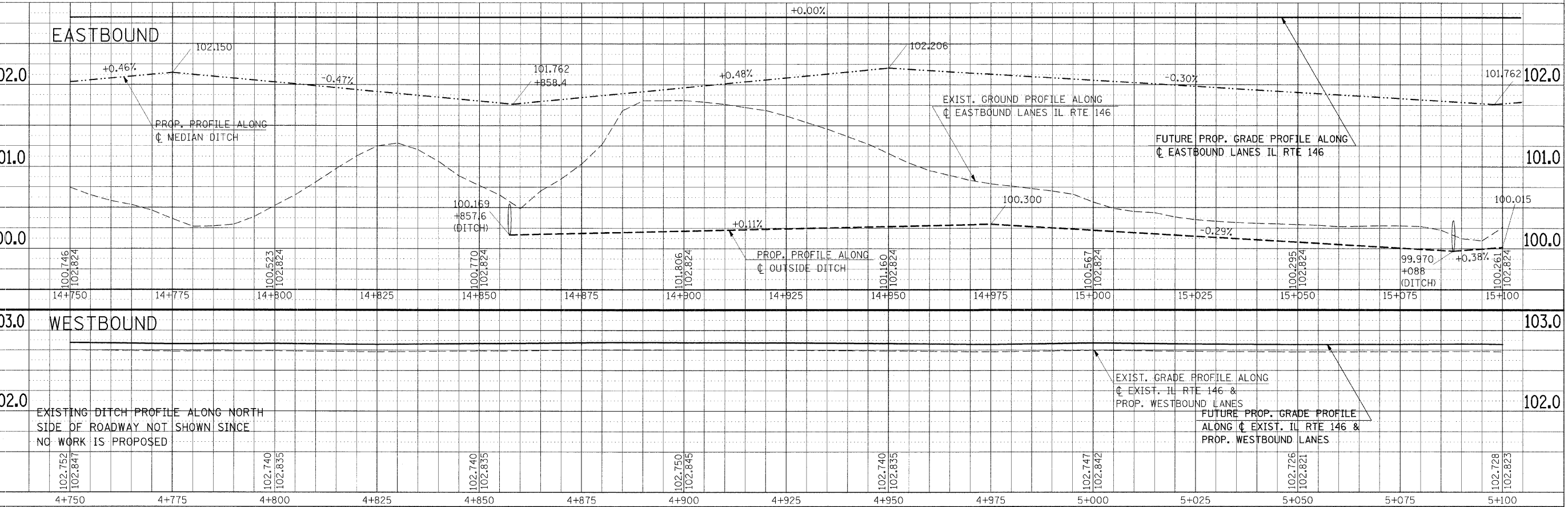
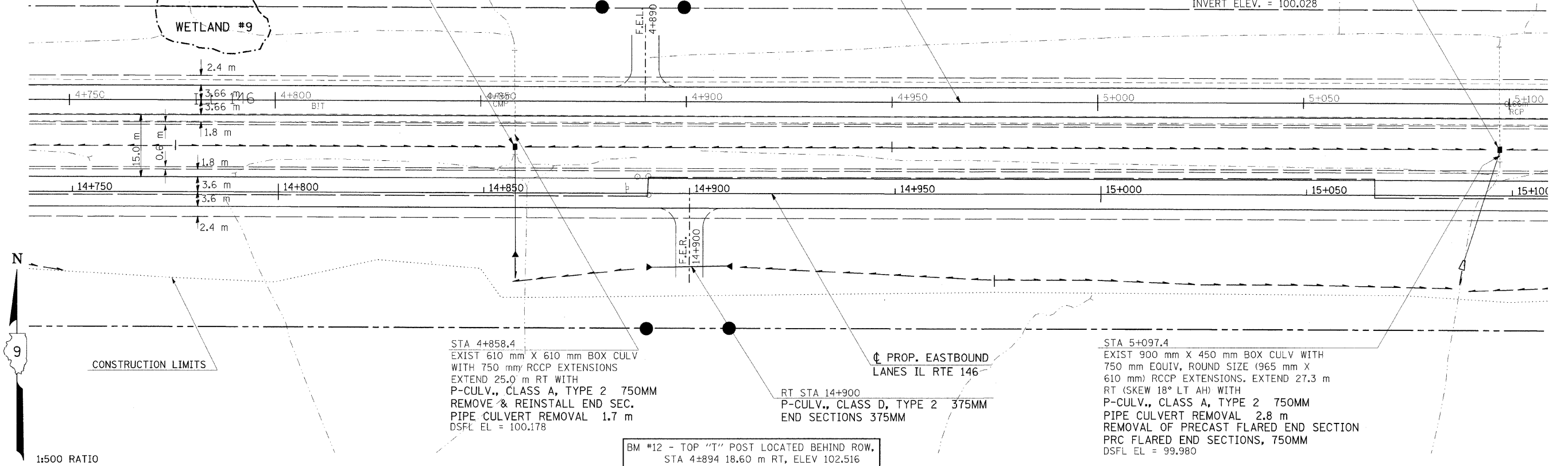
NOTE: CONSTRUCTION LIMITS ON NORTH SIDE HAVE BEEN OMITTED FOR CLARITY.

11.16 m RT STA 4+858.4
FLUSH INLET BOX FOR MEDIAN,
STANDARD 542546, SPECIAL
CONSTRUCT TO DRAIN INTO EXIST CULV
TOP OF GRATE EL = 101.762

EXIST. IL RTE 146 &
PROP. WESTBOUND LANES

11.16 m RT STA 5+097.4
FLUSH INLET BOX FOR MEDIAN,
STANDARD 542546, SPECIAL
TOP OF GRATE EL = 101.762
INVERT ELEV. = 100.028

DATE	
BY	
SURVEYED	
PLOTTED	
NOTE BOOK	
TEMPERATURE	
AREAS CHECKED	
NO.	



Friday, November 24, 2008 @ 10:33:00 AM
 c:\p\work\p\midot\h\eadon\dms43642.m\2599pl.dgn LV=2-20,24-60,62-63
 c:\p\work\p\midot\h\eadon\dms39801.v\50000.dgn LV=1-63
 c:\p\work\p\midot\h\eadon\dms39801.v\82599.dgn LV=2-9,11,13-17,19,25-60

PLAN-PROFILE - STA 4+750 TO STA 5+100