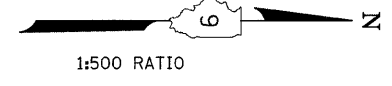


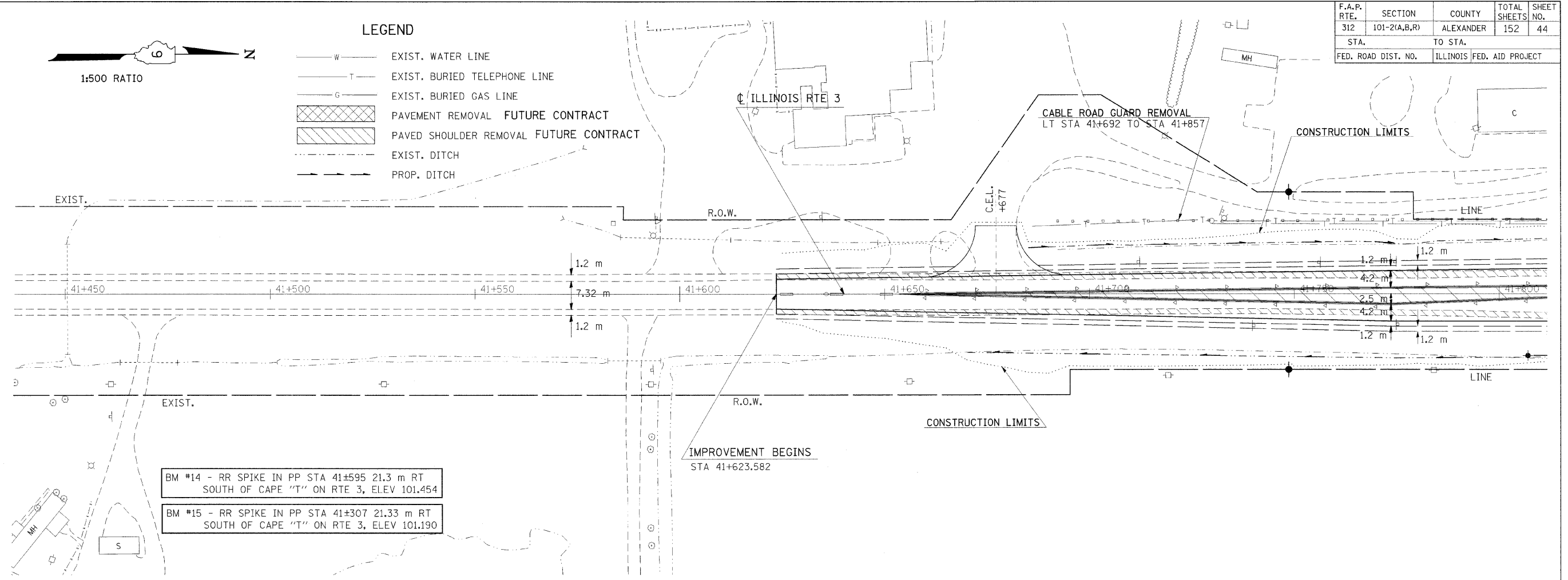
F.A.P. RTE.	SECTION	COUNTY	TOTAL SHEETS NO.	SHEET NO.
312	101-2(A,B,R)	ALEXANDER	152	44
STA. TO STA.		ILLINOIS FED. AID PROJECT		
FED. ROAD DIST. NO.				



LEGEND

- W — EXIST. WATER LINE
- T — EXIST. BURIED TELEPHONE LINE
- G — EXIST. BURIED GAS LINE
- [Cross-hatched box] PAVEMENT REMOVAL FUTURE CONTRACT
- [Diagonal hatched box] PAVED SHOULDER REMOVAL FUTURE CONTRACT
- - - - - EXIST. DITCH
- - - - - PROP. DITCH

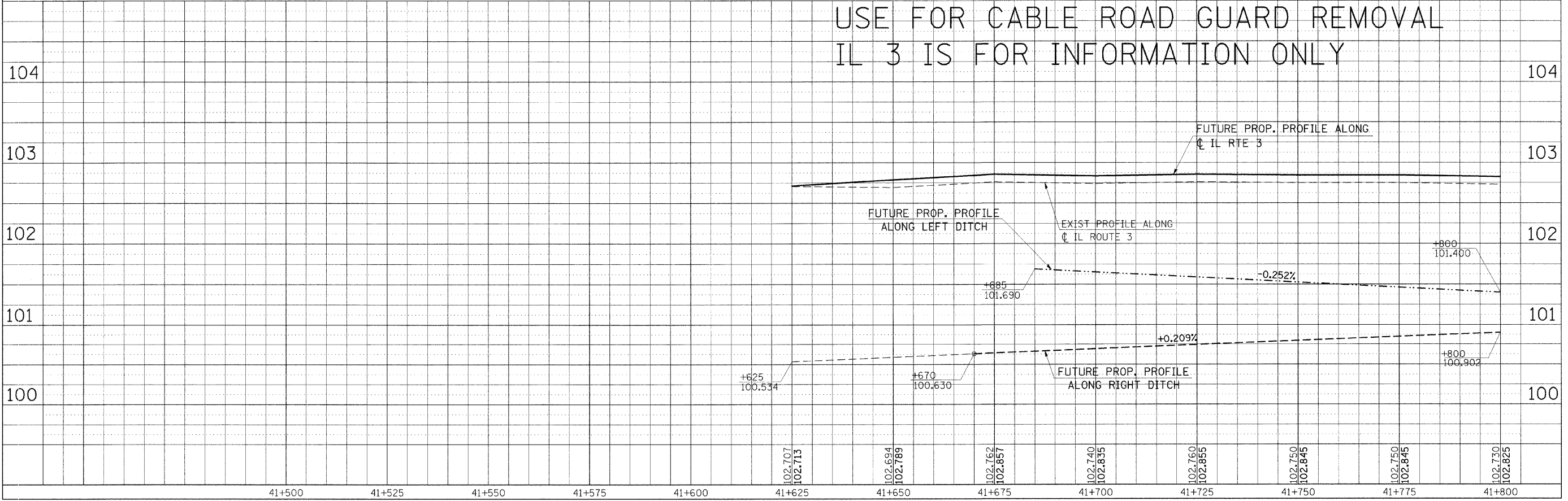
BY	DATE
SURVEYED	
PLOTTED	
NOTE BOOK	
AREAS CHECKED	
NO.	



BM #14 - RR SPIKE IN PP STA 41+595 21.3 m RT
SOUTH OF CAPE "T" ON RTE 3, ELEV 101.454

BM #15 - RR SPIKE IN PP STA 41+307 21.33 m RT
SOUTH OF CAPE "T" ON RTE 3, ELEV 101.190

USE FOR CABLE ROAD GUARD REMOVAL
IL 3 IS FOR INFORMATION ONLY



Friday, October 31, 2008 @ 12:13 PM
 c:\pwworkspace\KPMIDOT\HEADCN\dms43642\m02599\p2.dgn LV=2-20,24-57,59-63
 c:\pwworkspace\KPMIDOT\HEADCN\dms39821\m02599\p3.dgn LV=2-9,11,13-17,19-20,24-60
 c:\pwworkspace\KPMIDOT\HEADCN\dms39821\m02599\p4.dgn LV=1-15,17-21,23-56,58-63

ROUTE 3 PLAN-PROFILE - STA 41+450 TO STA 41+800