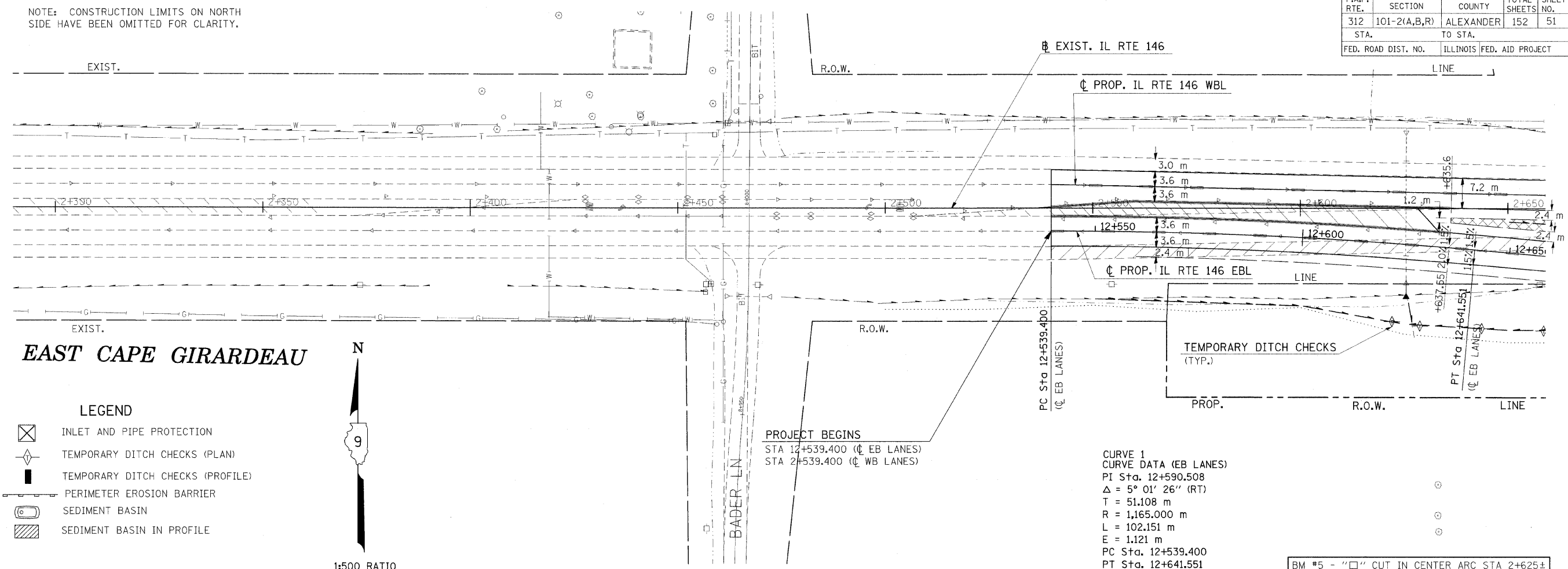


F.A.P. RTE.	SECTION	COUNTY	TOTAL SHEETS	SHEET NO.
312	101-2(A,B,R)	ALEXANDER	152	51
STA.		TO STA.		
FED. ROAD DIST. NO.		ILLINOIS FED. AID PROJECT		

NOTE: CONSTRUCTION LIMITS ON NORTH SIDE HAVE BEEN OMITTED FOR CLARITY.



EAST CAPE GIRARDEAU

- LEGEND**
- INLET AND PIPE PROTECTION
 - TEMPORARY DITCH CHECKS (PLAN)
 - TEMPORARY DITCH CHECKS (PROFILE)
 - PERIMETER EROSION BARRIER
 - SEDIMENT BASIN
 - SEDIMENT BASIN IN PROFILE

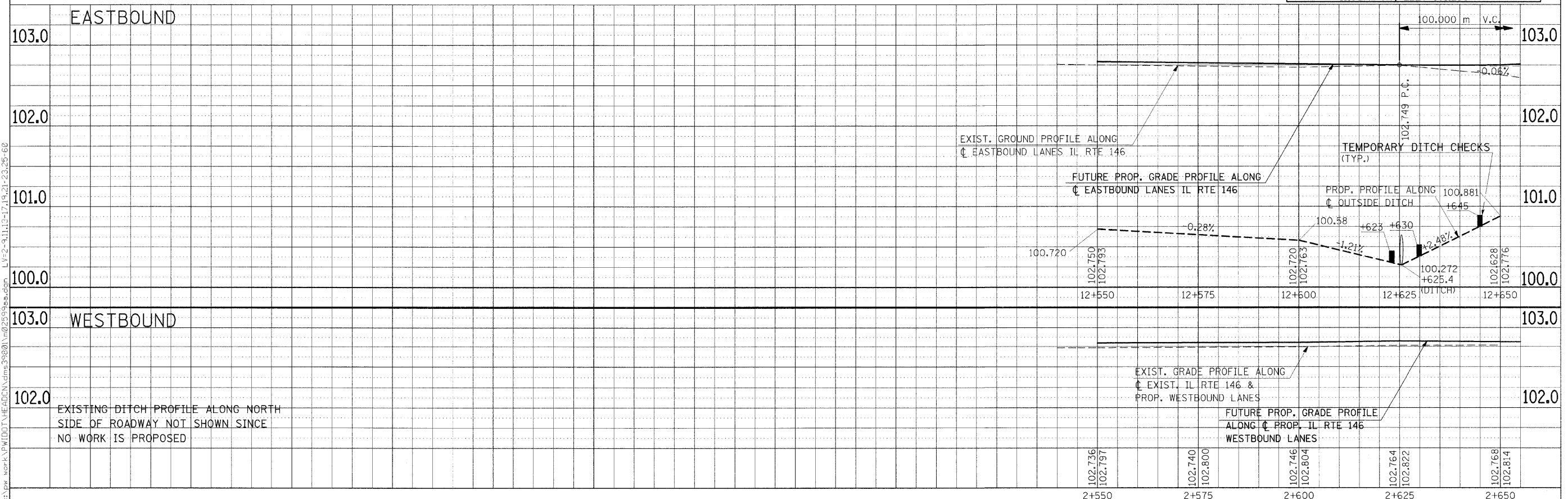


1:500 RATIO

PROJECT BEGINS
 STA 12+539.400 (CL EB LANES)
 STA 2+539.400 (CL WB LANES)

CURVE 1
 CURVE DATA (EB LANES)
 PI Sta. 12+590.508
 $\Delta = 5^\circ 01' 26''$ (RT)
 T = 51.108 m
 R = 1,165,000 m
 L = 102.151 m
 E = 1.121 m
 PC Sta. 12+539.400
 PT Sta. 12+641.551

BM #5 - "□" CUT IN CENTER ARC STA 2+625±
 11.88 m RT, ELEV 101.230



Friday, November 21, 2008 @ 11:44:08 AM
 c:\pwworkspace\alexander\dm\312\101-2\23-25-60-62-63.dgn LV=2-23-25-60-62-63
 c:\pwworkspace\alexander\dm\312\101-2\23-25-60-62-63.dgn LV=2-23-25-60-62-63
 c:\pwworkspace\alexander\dm\312\101-2\23-25-60-62-63.dgn LV=2-23-25-60-62-63
 c:\pwworkspace\alexander\dm\312\101-2\23-25-60-62-63.dgn LV=2-23-25-60-62-63

TEMPORARY EROSION CONTROL PLAN - STA 2+300 TO STA 2+650