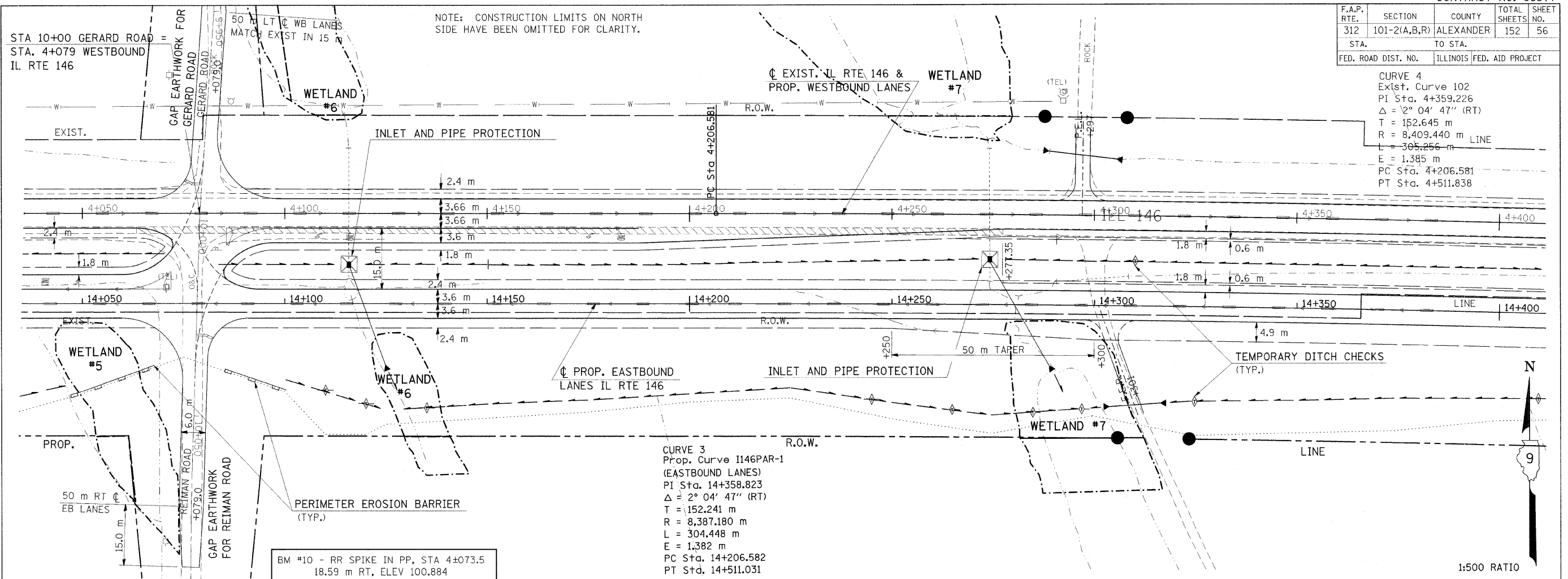


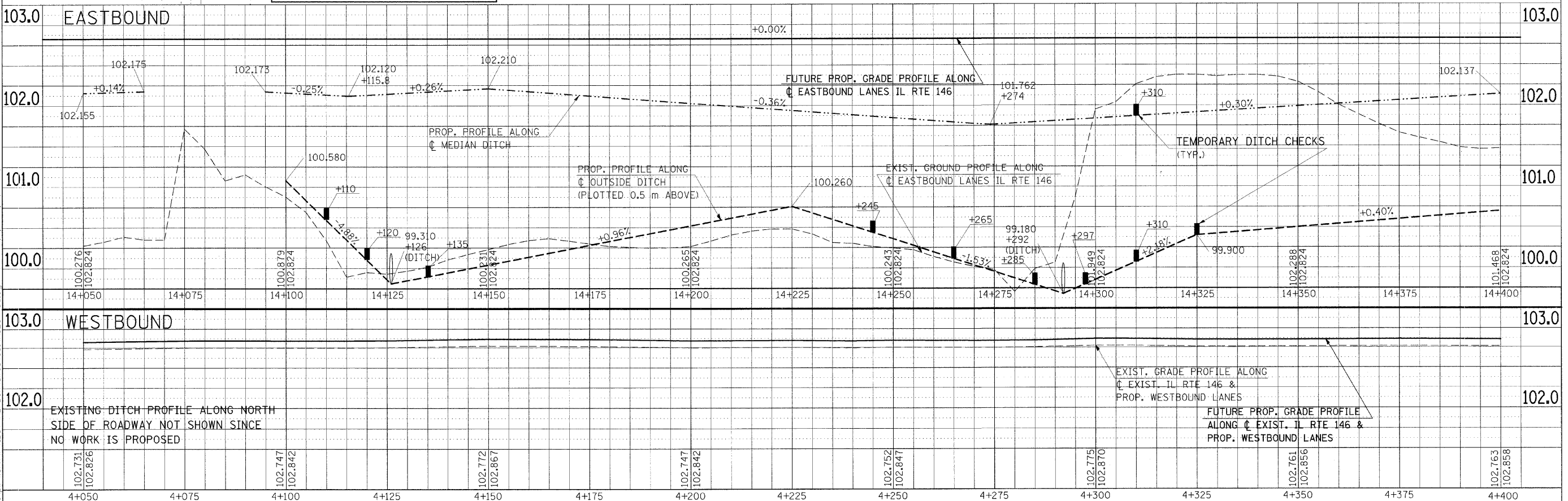
F.A.P. RTE.	SECTION	COUNTY	TOTAL SHEETS	SHEET NO.
312	101-2(A,B,R)	ALEXANDER	152	56
STA.		TO STA.		
FED. ROAD DIST. NO.		ILLINOIS FED. AID PROJECT		

CURVE 4
 Exist. Curve 102
 PI Sta. 4+359.226
 $\Delta = 2^{\circ} 04' 47''$ (RT)
 T = 152.645 m
 R = 8,409.440 m
 L = 305.256 m
 E = 1.385 m
 PC Sta. 4+206.581
 PT Sta. 4+511.838



BY	DATE

FINAL SURVEY PLOTTED
 NOTE BOOK TEMPLATE
 AREAS CHECKED
 INC.



Friday, November 21, 2008 @ 14:48:14 AM
 c:\pwworkspace\p10001\HEAD\N\Drawings\98577\101-2(A,B,R)\101-2(A,B,R)-23.25-63.dwg
 L:\1-19-21\24-63
 L:\1-19-21\24-63
 L:\1-19-21\24-63
 L:\1-19-21\24-63

TEMPORARY EROSION CONTROL PLAN - STA 4+050 TO STA 4+400