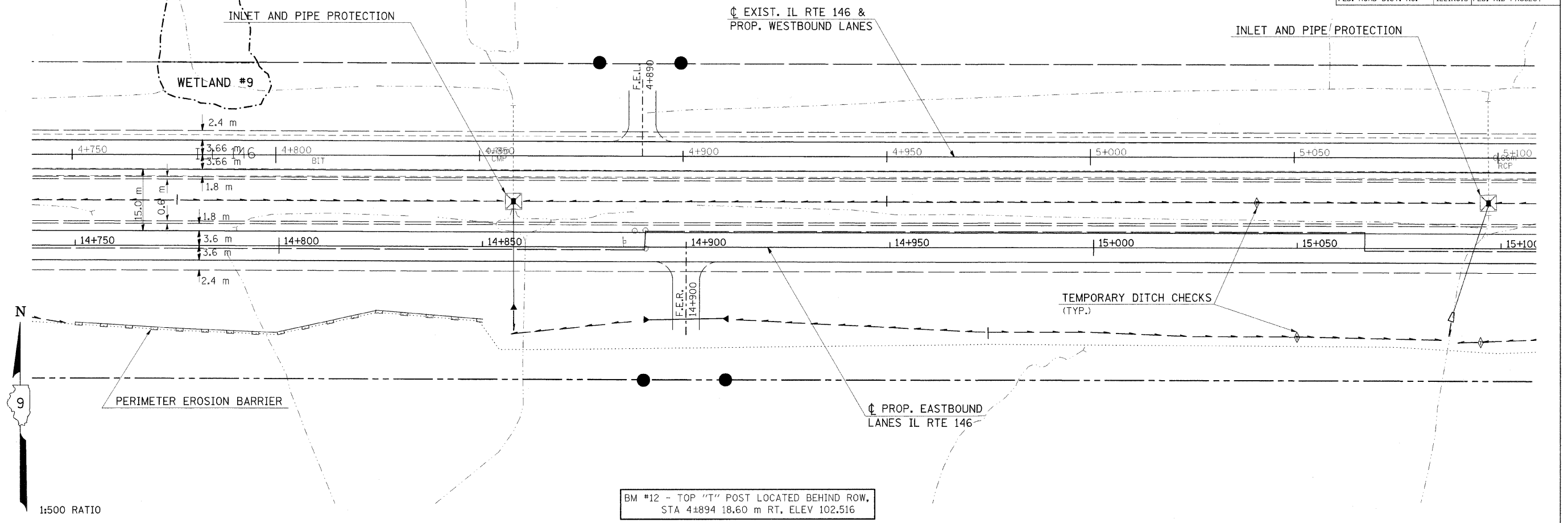
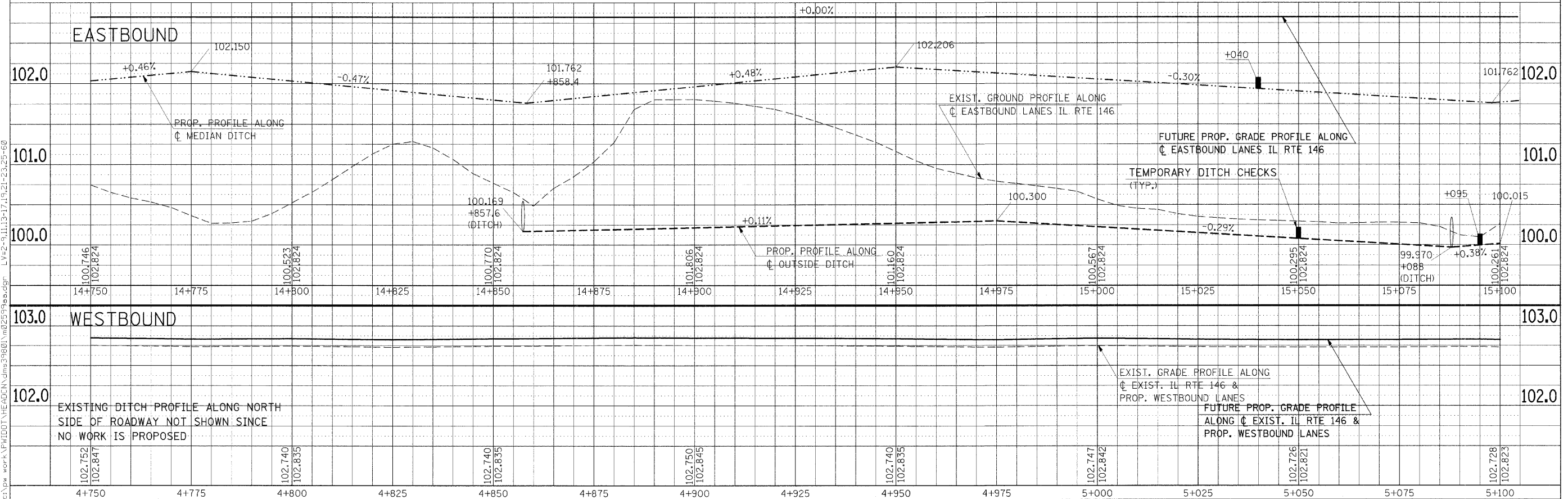


F.A.P. RTE.	SECTION	COUNTY	TOTAL SHEETS	SHEET NO.
312	101-2(A,B,R)	ALEXANDER	152	58
STA.		TO STA.		
FED. ROAD DIST. NO.		ILLINOIS		FED. AID PROJECT

NOTE: CONSTRUCTION LIMITS ON NORTH SIDE HAVE BEEN OMITTED FOR CLARITY.



BM #12 - TOP "T" POST LOCATED BEHIND ROW, STA 4+894 18.60 m RT, ELEV 102.516



TEMPORARY EROSION CONTROL PLAN - STA 4+750 TO STA 5+100

FINAL SURVEY	DATE
SURVEYED	
PLOTTED	
TEMPLATE	
NOTE BOOK	
AREAS CHECKED	
NO.	

Friday November 2, 2008 @ 11:49:31 AM
 c:\pwwork\pwwork\headon\dms\3642\m22599\pl.dgn LV=2-23,25-60,62-63
 c:\pwwork\pwwork\headon\dms\3642\m22599\pl.dgn LV=1-63
 c:\pwwork\pwwork\headon\dms\3642\m22599\pl.dgn LV=2-9,11,13-17,19,21-23,25-60