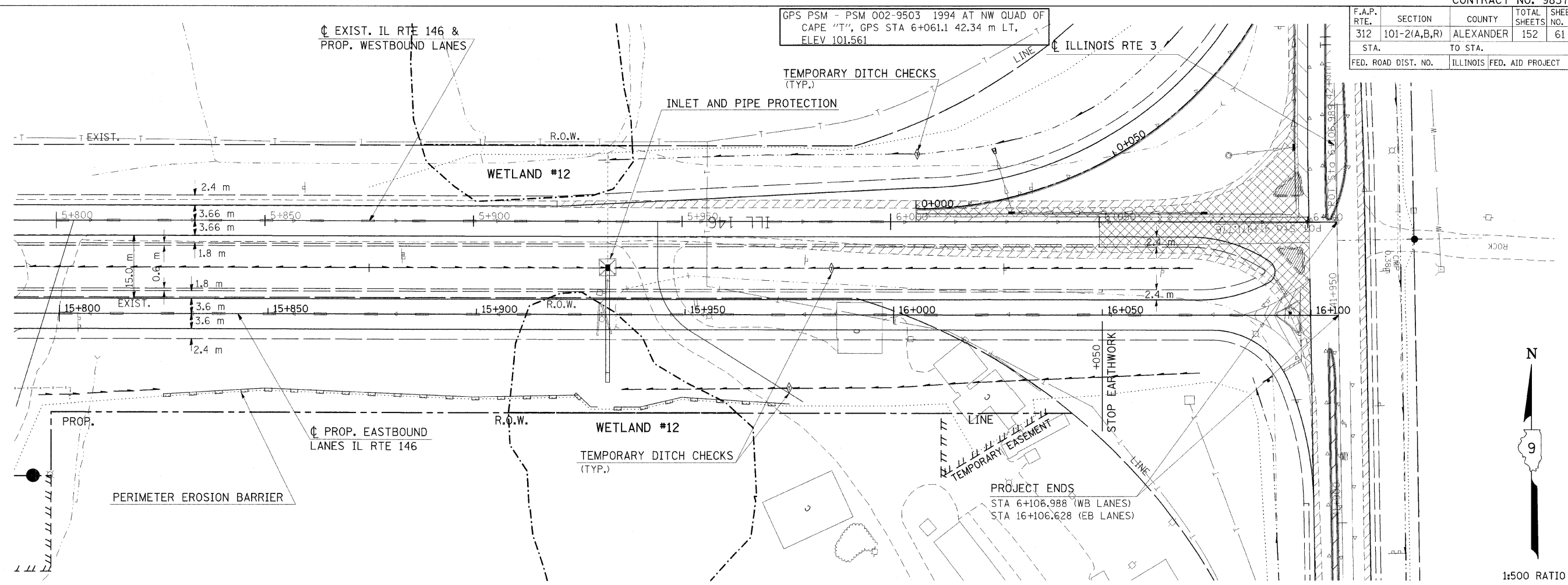
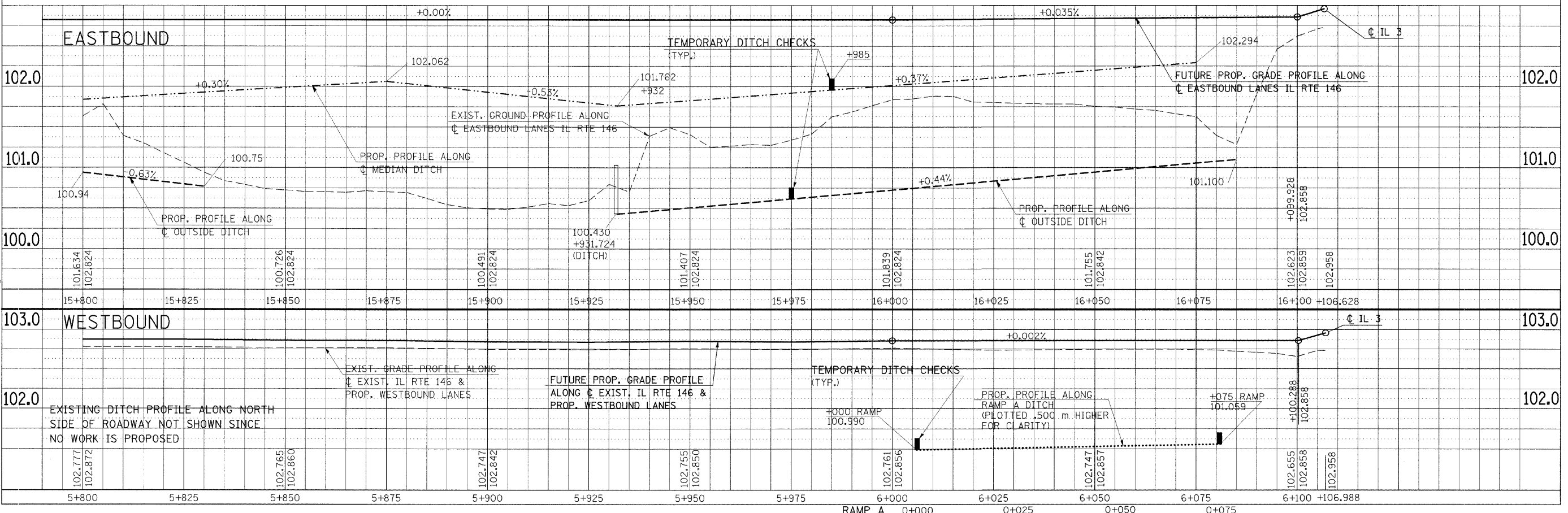


F.A.P. RTE.	SECTION	COUNTY	TOTAL SHEETS	SHEET NO.
312	101-2(A,B,R)	ALEXANDER	152	61
STA.	TO STA.			
FED. ROAD DIST. NO.	ILLINOIS FED. AID PROJECT			

GPS PSM - PSM 002-9503 1994 AT NW QUAD OF CAPE "T", GPS STA 6+061.1 42.34 m LT, ELEV 101.561



DATE	BY
SURVEYED	NO.
PLOTTED	NO.
NOTE BOOK	NO.
AREAS CHECKED	NO.



Friday, November 21, 2008 8:15:25 AM
 c:\pwworkspace\pwworkspace\dms43842\m025999.dgn LV=2-23,25-60,62-63
 c:\pwworkspace\pwworkspace\dms43842\m025999.dgn LV=1-63
 c:\pwworkspace\pwworkspace\dms43842\m025999.dgn LV=2-9,11,14-17,19,21-23,25-31,33-43,45-54,56-60