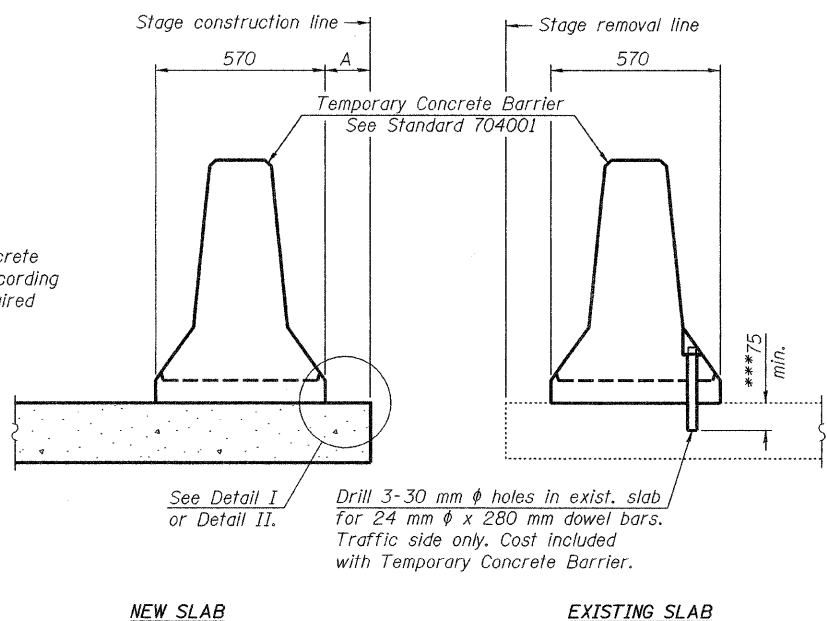


STATE OF ILLINOIS
DEPARTMENT OF TRANSPORTATION

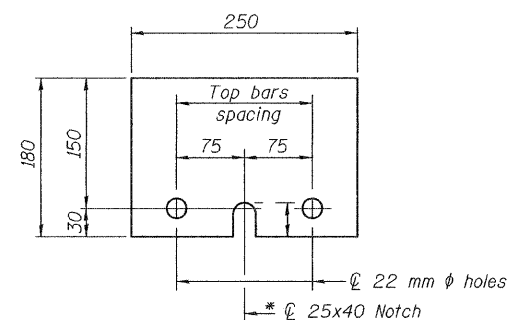
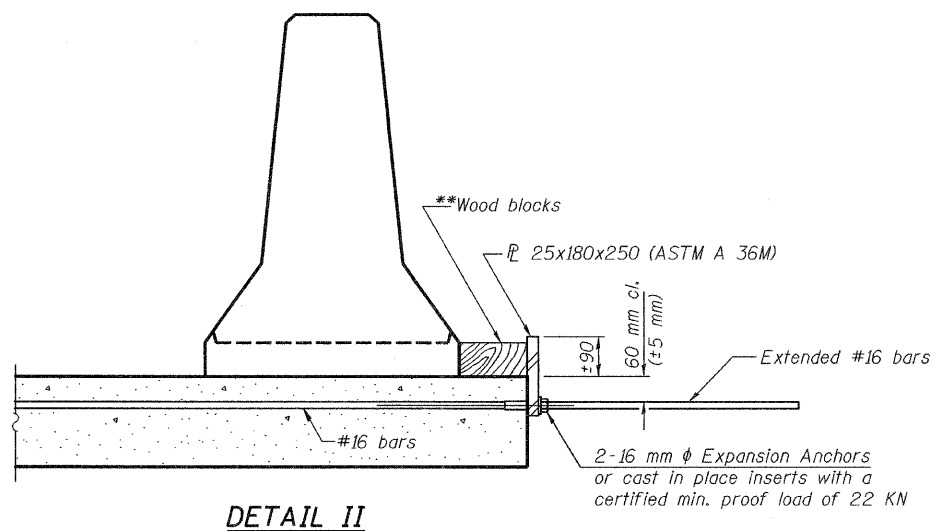
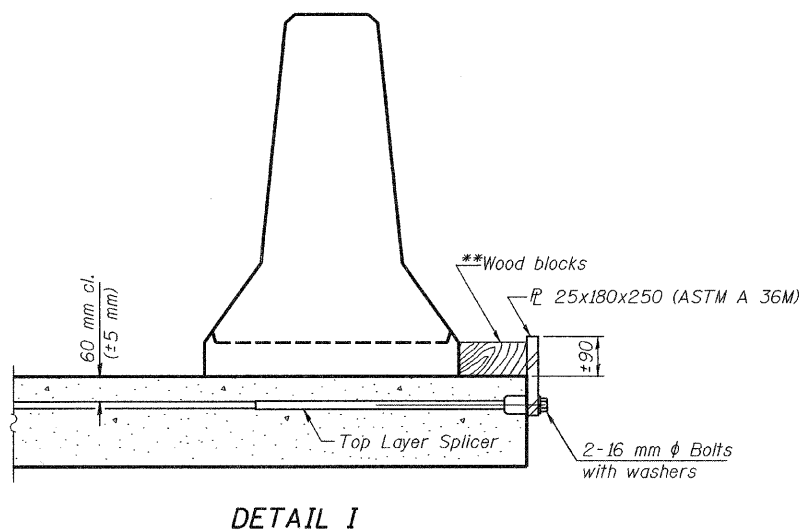
ROUTE NO.	SECTION	COUNTY	TOTAL SHEETS	SHEET NO.	SHEET NO. 4 11 SHEETS
F.A.P. 312	101B-1	ALEXANDER	152	86	
FED. ROAD DIST. NO. 7		ILLINOIS	FED. AID PROJECT-		

Contract No. 98577

When "A" is 1 m or less, the temporary concrete barrier shall be anchored to the new slab according to Detail I or Detail II. No anchorage is required when "A" is greater than 1 m.



SECTIONS THRU SLAB



STEEL RETAINER 25x180x250

*Required only with Detail II

NOTES

- Detail I - With Bar Splicer or Couplers:
Connect one (1) 25x180x250 steel \bar{L} to the top layer of couplers with 2-16 mm ϕ bolts screwed to coupler at approximate \bar{C} of each barrier panel.
- Detail II - With Extended Reinforcement Bars:
Connect one (1) 25x180x250 steel \bar{L} to the concrete slab or concrete wearing surface with 2-16 mm ϕ . Expansion anchors or cast in place inserts spaced between the top layer of reinforcement at approximate \bar{C} of each barrier panel.
- Cost of anchorage is included with Temporary Concrete Barrier. The 25x180x250 plate shall not be removed until stage II construction forms and all reinforcement bars are in place and the concrete is ready to be placed.
- All dimensions are in millimeters except as noted.

- **Wood blocks may be omitted when required to provide minimum stage traffic lane width. When the wood blocks are omitted, the concrete barrier shall be in direct contact with the steel retainer plate.
- ***Dimension shown is minimum required embedment into concrete. If hot-mix asphalt wearing surface is present, minimum embedment shall be in addition to wearing surface depth.

DESIGNED	J.S.B.
CHECKED	C.C.C.
DRAWN	h.f. duong
CHECKED	J.S.B./C.C.C.

Jan 26, 2009
EXAMINED *Thomas J. Donagale*
ENGINEER OF BRIDGE DESIGN
PASSED *Ralph E. Anderson*
ENGINEER OF BRIDGES AND STRUCTURES

TEMPORARY CONCRETE BARRIER
FOR STAGE CONSTRUCTION
F.A.P. RTE. 312 - SECTION 101B-1
ALEXANDER COUNTY
STATION 5+699.435
STRUCTURE NO. 002-2002