

ROUTE NO.	SECTION	COUNTY	TOTAL SHEETS	SHEET NO.
T.R. 131	07-06121-00-BR	JEFFERSON	30	1
FED. ROAD DIST. NO.		ILLINOIS	CONTRACT NO. 99350	

STATE OF ILLINOIS
DEPARTMENT OF TRANSPORTATION
DIVISION OF HIGHWAYS

**PLANS FOR PROPOSED
HIGHWAY BRIDGE PROGRAM
GRADE CROSSING PROTECTION FUND**

INDEX OF SHEETS

SHEET NO.	DESCRIPTION
1.	COVER SHEET
2.	SUMMARY OF QUANTITIES AND GENERAL NOTES
3.	SCHEDULE OF QUANTITIES
4.	TYPICAL SECTIONS AND MISC. DETAILS
5.-7.	PLAN AND PROFILE
8.	EROSION CONTROL PLAN
9.-18.	STATION CROSS SECTIONS
19.-29.	BRIDGE PLANS
30.	BORINGS

HIGHWAY STANDARDS

000001-05	STANDARD SYMBOLS, ABBREVIATIONS, AND PATTERNS
515001-03	NAME PLATE FOR BRIDGES
630001-08	STEEL PLATE BEAM GUARDRAIL
630301-05	SHOULDER WIDENING FOR TYPE 1 (SPECIAL) GUARDRAIL TERMINALS
701901-01	TRAFFIC CONTROL DEVICES
BLR 21-8	TYPICAL APPLICATION OF TRAFFIC CONTROL DEVICES FOR CONSTRUCTION ON RURAL LOCAL HIGHWAYS
BLR 24-2	MAILBOX TURNOUT FOR LOCAL ROADS
BLR 27-1	TRAFFIC BARRIER TERMINAL, TYPE 5 AND 5A

UTILITIES

ELECTRIC:	PIPELINE:
TRI-COUNTY ELECTRIC COOPERATIVE P.O. BOX 309 MT. VERNON, IL 62864 ATTN: SUE ECHOLS 618-224-5151	COUNTRYMARK COOPERATIVE, LLP 1200 REFINERY ROAD MT. VERNON, INDIANA 47620 ATTN: MICKEY SMITH 812-838-8881
WATER: WESTERN WAYNE WATER DISTRICT R R 2 WAYNE CITY, IL 62895 ATTN: ROGER JOHNSON 618-895-2802	TELEPHONE: AT&T/DISTRIBUTION 529 S. SEVENTH ST. SPRINGFIELD, IL 62703

PROJECT BROS-081(52)
SECTION 07-06121-00-BR
FARRINGTON ROAD DISTRICT
JEFFERSON COUNTY
MALECKI ROAD / T.R. 131
OVER C.N. / I.C. RAILROAD AT M.P. 34.30
PROPOSED STRUCTURE NO. 041-3738
JOB NO. C-99-588-06



DESIGN DESIGNATION

FUNCTIONAL CLASSIFICATION: LOCAL ROAD (0-250 ADT)
DESIGN SPEED: 30 MPH
DESIGN TRAFFIC: 90 ADT (2008)

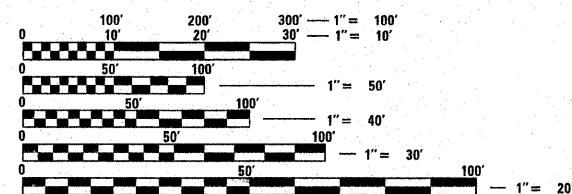
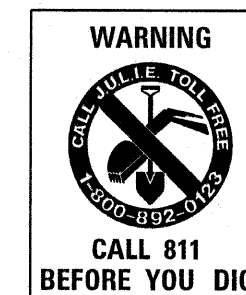
JEFFERSON COUNTY HIGHWAY DEPT.

APPROVED 12-22 2008
Virginia Walker
ROAD DISTRICT COMMISSIONER

APPROVED 12-22 2008
Steve Schaefer
COUNTY ENGINEER

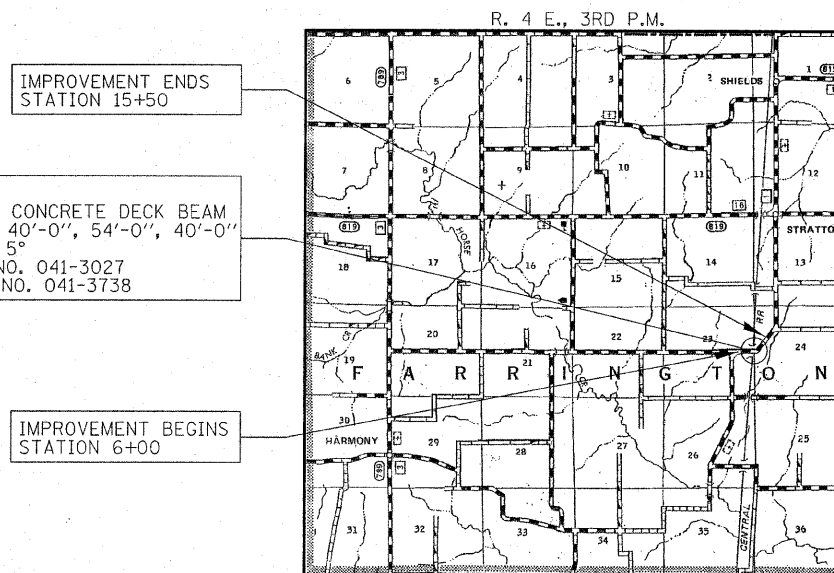
PASSED 1-16 2009
Keith Wiley
DISTRICT NINE ENGINEER OF
LOCAL ROADS & STREETS

Releasing For
Limited Review 1-16 2009
Blair C. Harris
DEPUTY DIRECTOR OF HIGHWAYS
REGION FIVE ENGINEER
STATE OF ILLINOIS
DEPARTMENT OF TRANSPORTATION



FULL SIZE PLANS HAVE BEEN PREPARED USING STANDARD ENGINEERING SCALES. REDUCED SIZED PLANS WILL NOT CONFORM TO STANDARD SCALES. IN MAKING MEASUREMENTS ON REDUCED PLANS, THE ABOVE SCALES MAY BE USED.

STA. 10+00
PRECAST PRESTRESSED CONCRETE DECK BEAM
BRIDGE. THREE SPANS: 40'-0", 54'-0", 40'-0"
27'-0" RDWY.; SKEW = 5°
EXISTING STRUCTURE NO. 041-3027
PROPOSED STRUCTURE NO. 041-3738



LOCATION MAP

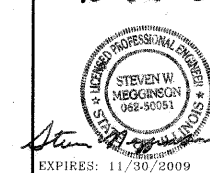
APPROXIMATE SCALE: 0 1 MILE
NET LENGTH OF SECTION = 950 FEET = 0.180 MILES

CONTRACT NO. 99350

JEFFERSON COUNTY

SECTION 07-06121-00-BR

DATE: 12-18-2008



HAMPTON, LENZINI & RENWICK, INC.
CIVIL & STRUCTURAL ENGINEERS
LAND SURVEYORS

3085 STEVENSON DRIVE, SUITE 201
SPRINGFIELD, ILLINOIS 62703
(217) 546-3400

HLR
ELGIN • SPRINGFIELD

EXPIRES: 11/30/2009

PROJECT NUMBER: 08.0128.130 DATE: 12/16/08